
BLACK HILLS EXPLORATION & PROD-EBUS

**Southern Ute 34-41
LA PLATA
La Plata County , Colorado**

**Cement Surface Casing
30-Jun-2010**

Job Site Documents

The Road to Excellence Starts with Safety

Sold To #: 359739		Ship To #: 359739		Quote #:		Sales Order #: 7468127							
Customer: BLACK HILLS EXPLORATION & PROD-EBUS				Customer Rep:									
Well Name: Southern Ute			Well #: 34-41			API/UWI #:							
Field: LA PLATA		City (SAP): GOLDEN		County/Parish: La Plata			State: Colorado						
Contractor: AWS			Rig/Platform Name/Num: 507										
Job Purpose: Cement Surface Casing													
Well Type: Development Well					Job Type: Cement Surface Casing								
Sales Person: SNYDER, RANDALL				Srvc Supervisor: WOOD, BRANDON			MBU ID Emp #: 412753						
Job Personnel													
HES Emp Name	Exp Hrs	Emp #	HES Emp Name	Exp Hrs	Emp #	HES Emp Name	Exp Hrs	Emp #					
AXT, STEPHEN Gary	5	434802	GONZALEZ, ARMANDO	5	452786	WOOD, BRANDON M	5	412753					
Equipment													
HES Unit #	<i>Distance-1 way</i>	HES Unit #	<i>Distance-1 way</i>	HES Unit #	<i>Distance-1 way</i>	HES Unit #	<i>Distance-1 way</i>						
10025031	45 mile	10804563	45 mile	10829466	45 mile	11223557	45 mile						
Job Hours													
Date	<i>On Location Hours</i>	Operating Hours	Date	<i>On Location Hours</i>	Operating Hours	Date	<i>On Location Hours</i>	Operating Hours					
TOTAL			<i>Total is the sum of each column separately</i>										
Job					Job Times								
Formation Name					Date								
Formation Depth (MD) Top Bottom					Time Time Zone								
Form Type BHST					Called Out 29 - Jun - 2010 22:00 MST								
Job depth MD 478.9 ft Job Depth TVD 436.8 ft					On Location 30 - Jun - 2010 01:30 MST								
Water Depth					Job Started 30 - Jun - 2010 00:00 MST								
Perforation Depth (MD) From To					Job Completed 30 - Jun - 2010 00:00 MST								
					Departed Loc 30 - Jun - 2010 00:00 MST								
Well Data													
<i>Description</i>	New / Used	Max pressure psig	Size in	ID in	Weight lbm/ft	Thread	Grade	Top MD ft	Bottom MD ft	Top TVD ft	Bottom TVD ft		
12.25" Open Hole				12.25				.	468.				
8.625" Surface Casing	Unknown		8.625	8.097	24.			.	478.9				
Sales/Rental/3rd Party (HES)													
Description							Qty	Qty uom	Depth	Supplier			
SUGAR, GRANULATED, IMPERIAL							150	LB					
PLUG,CMTG, TOP, 8 5/8, HWE, 7.20 MIN/8.09 MA							1	EA					
Tools and Accessories													
Type	Size	Qty	Make	Depth	Type	Size	Qty	Make	Depth	Type	Size	Qty	Make
Guide Shoe					Packer					Top Plug			
Float Shoe					Bridge Plug					Bottom Plug			
Float Collar					Retainer					SSR plug set			
Insert Float										Plug Container			
Stage Tool										Centralizers			
Miscellaneous Materials													
Gelling Agt			Conc	Surfactant			Conc	Acid Type			Qty	Conc	%
Treatment Fld			Conc	Inhibitor			Conc	Sand Type			Size	Qty	

Fluid Data									
Stage/Plug #: 1									
Fluid #	Stage Type	Fluid Name	Qty	Qty uom	Mixing Density lbm/gal	Yield ft ³ /sk	Mix Fluid Gal/sk	Rate bbl/min	Total Mix Fluid Gal/sk
1	H2O Spacer		20.00	bbl	8.33	.0	.0	.0	
2	Surface Cement	CMT - PREMIUM - CLASS G, 94 LB SK (100003685)	260.0	sacks	15.8	1.17	5.01		5.01
	94 lbm	CMT - PREMIUM - CLASS G REG OR TYPE V, BULK (100003685)							
	3 %	CALCIUM CHLORIDE - HI TEST PELLETT (100005053)							
	0.125 lbm	POLY-E-FLAKE (101216940)							
	5.013 Gal	FRESH WATER							
3	H2O Displacement		27.80	bbl	8.33	.0	.0	.0	
Calculated Values		Pressures		Volumes					
Displacement	27.8	Shut In: Instant		Lost Returns	NO	Cement Slurry	54.3	Pad	
Top Of Cement	SURFACE	5 Min		Cement Returns	12	Actual Displacement	27.9	Treatment	
Frac Gradient		15 Min		Spacers	20	Load and Breakdown		Total Job	
Rates									
Circulating	2	Mixing	4	Displacement	4	Avg. Job	3		
Cement Left In Pipe	Amount	42.17 ft	Reason	Shoe Joint					
Frac Ring # 1 @	ID	Frac ring # 2 @	ID	Frac Ring # 3 @	ID	Frac Ring # 4 @	ID		
The Information Stated Herein Is Correct				Customer Representative Signature					

The Road to Excellence Starts with Safety

Sold To #: 359739	Ship To #: 359739	Quote #:	Sales Order #: 7468127
Customer: BLACK HILLS EXPLORATION & PROD-EBUS		Customer Rep:	
Well Name: Southern Ute		Well #: 34-41	API/UWI #:
Field: LA PLATA	City (SAP): GOLDEN	County/Parish: La Plata	State: Colorado
Legal Description:			
Lat:		Long:	
Contractor: AWS		Rig/Platform Name/Num: 507	
Job Purpose: Cement Surface Casing			Ticket Amount:
Well Type: Development Well		Job Type: Cement Surface Casing	
Sales Person: SNYDER, RANDALL		Srvc Supervisor: WOOD, BRANDON	MBU ID Emp #: 412753

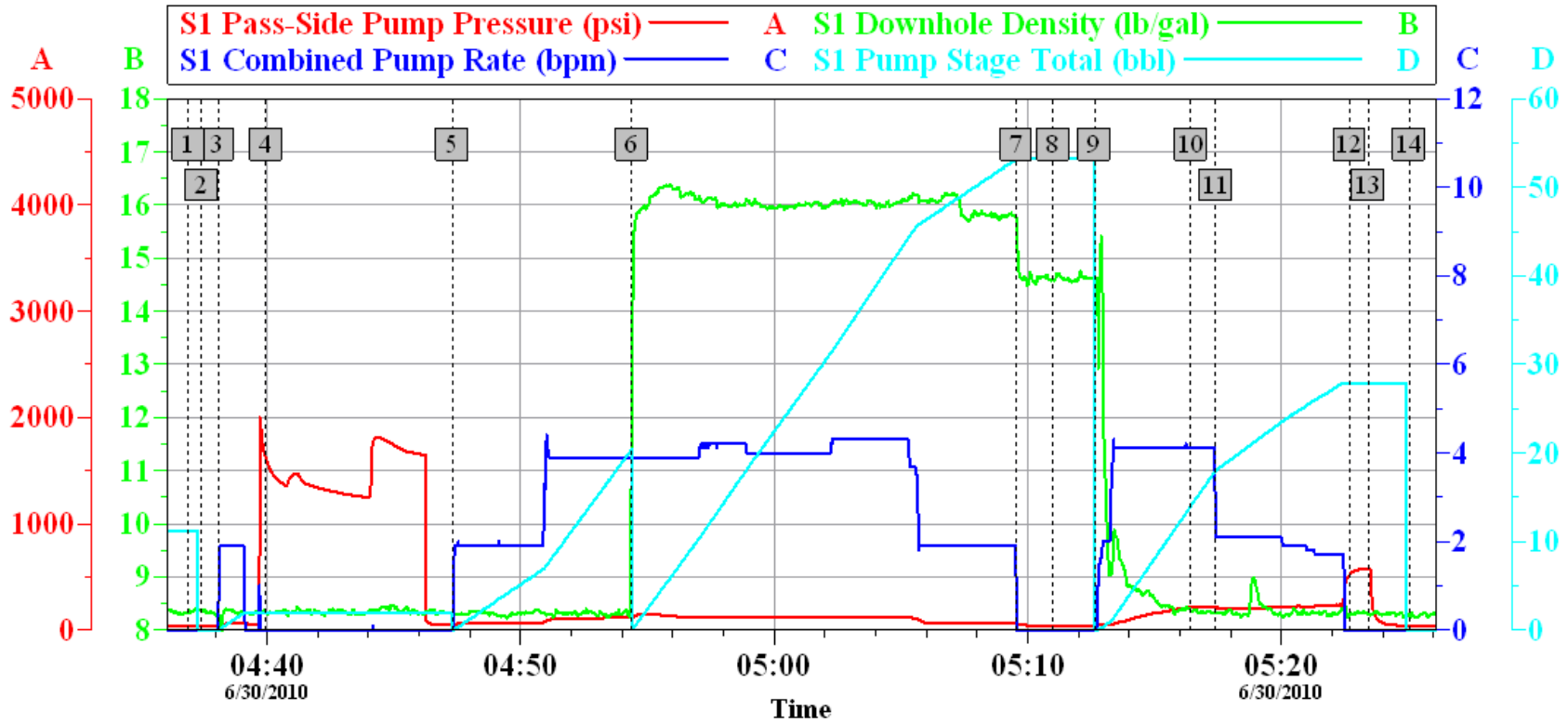
Activity Description	Date/Time	Cht #	Rate bbl/min	Volume bbl		Pressure psig		Comments
				Stage	Total	Tubing	Casing	
Call Out	06/29/2010 22:00							GRAND JUNCTION CALLED CREW AT 2200 PM, 6-29-10
Depart Yard Safety Meeting	06/29/2010 23:40							SAFETY MEETING INVOLVING THE CMT CREW
Crew Leave Yard	06/29/2010 23:45							
Arrive At Loc	06/30/2010 01:30							1- F-450 10829466, 1- RED TIGER PUMP TRUCK 11223557, 1- 660 BULK TRUCK TRAILERS 10025031
Assessment Of Location Safety Meeting	06/30/2010 01:35							ASSESSMENT OF LOCATION INVOLVING THE CMT CREW
Pre-Rig Up Safety Meeting	06/30/2010 01:55							SAFETY MEETING INVOLVING THE ENTIRE CMT/ RIG CREW
Rig-Up Equipment	06/30/2010 02:00							
Pre-Job Safety Meeting	06/30/2010 04:15							SAFETY MEETING INVOLVING EVERYONE ON LOCATION
Start Job	06/30/2010 04:37							TD 468 FT, TP 468 FT, FC 426 FT, SJ 42 FT, 8 5/8 24 # J-55 CSG, 12 1/4 OH, CALCULATED 154 PSI TO LIFT PIPE OUT OF HOLE
Test Lines	06/30/2010 04:40		1		2		1500.0	PRESSURE TEST GOOD TO 1500 PSI
Pump Spacer 1	06/30/2010 04:47		2		20		66.0	PUMP 20 BBL FRESH WATER SPACER

Activity Description	Date/Time	Cht #	Rate bbl/min	Volume bbl		Pressure psig		Comments
				Stage	Total	Tubing	Casing	
Pump Cement	06/30/2010 04:54		4		54.2		146.0	260 SKS, 1.17 YLD, 5.01 GAL H2O/SK, 54.2 BBLS @ 15.8 #, 31 BBLS H2O REQ (TYPE G, 3 % CC, 1/8 # POLYFLAKE)
Shutdown	06/30/2010 05:09							SHUT DOWN TO DROP TOP PLUG
Drop Top Plug	06/30/2010 05:11							DROP TOP PLUG TATTLE TALE INDICATED PLUG HAS LEFT CONTAINER
Pump Displacement	06/30/2010 05:12		4		27.8		42.0	CALCULATED 27.8 BBLS DISPLACEMENT, ACTUALLY PUMPED 27.9 BBLS ON TANKS MARK TO MARK TO BUMP PLUG
Cement Returns to Surface	06/30/2010 05:16				12			CALCULATED SHOULD CIRCULATE 16.3 BBLS CEMENT RETURNS TO SURFACE, ACTUALLY CIRCULATED 12 BBLS
Slow Rate	06/30/2010 05:17		2				200.0	SLOW RATE 2 BBL MIN THE LAST 10 BBLS OF DISPLACEMENT TO LAND THE PLUG
Bump Plug	06/30/2010 05:22		2				236.0	CALCULATED 169.5 PSI DIFFERENTIAL WHEN PLUG LANDS, PLUG BUMPED @ 236 PSI
Check Floats	06/30/2010 05:23						578.0	PRESSURED UP TO 578 PSI, RELEASED PRESSURE FLOATS HELD, FLOWED BACK .25 BBLS
End Job	06/30/2010 05:25							GOOD CIRCULATION THROUGHOUT THE ENTIRE CMT JOB, NO PIPE MOVEMENT,
Pre-Rig Down Safety Meeting	06/30/2010 05:26							SAFETY MEETING INVOLVING THE CMT/RIG CREW
Rig-Down Equipment	06/30/2010 05:30							

Activity Description	Date/Time	Cht #	Rate bbl/ min	Volume bbl		Pressure psig		Comments
				Stage	Total	Tubing	Casing	
Safety Meeting - Departing Location	06/30/2010 06:25							SAFETY MEETING INVOLVING THE CMT CREW
Depart Location for Service Center or Other Site	06/30/2010 06:30							THANK YOU FOR USING HALLIBURTON, BRANDON WOOD AND CREW

BLACK HILLS

SOUTHERN UTE # 34-41, SURFACE



Global Event Log

1 Starting Job	04:36:55	2 Start Job	04:37:26	3 Load Casing	04:38:05
4 Test Lines	04:39:59	5 Pump Spacer 1	04:47:19	6 Pump Cement	04:54:24
7 Shutdown	05:09:34	8 Drop Top Plug	05:11:00	9 Pump Displacement	05:12:38
10 Cement Returns to Surface	05:16:26	11 Slow Rate	05:17:25	12 Bump Plug	05:22:41
13 Check Floats	05:23:25	14 End Job	05:25:02		

Customer: BLACK HILLS	Job Date: 29-Jun-2010	Sales Order #: 7468127
Well Description: SOUTHERN UTE	Job type: SURFACE	ADC Used: YES
Customer Rep: PHIL HENSON	Service Supervisor: B WOOD	Operator/ Pump: A. GONZALEZ/ 11223557

OptiCem v6.3.4
30-Jun-10 05:42