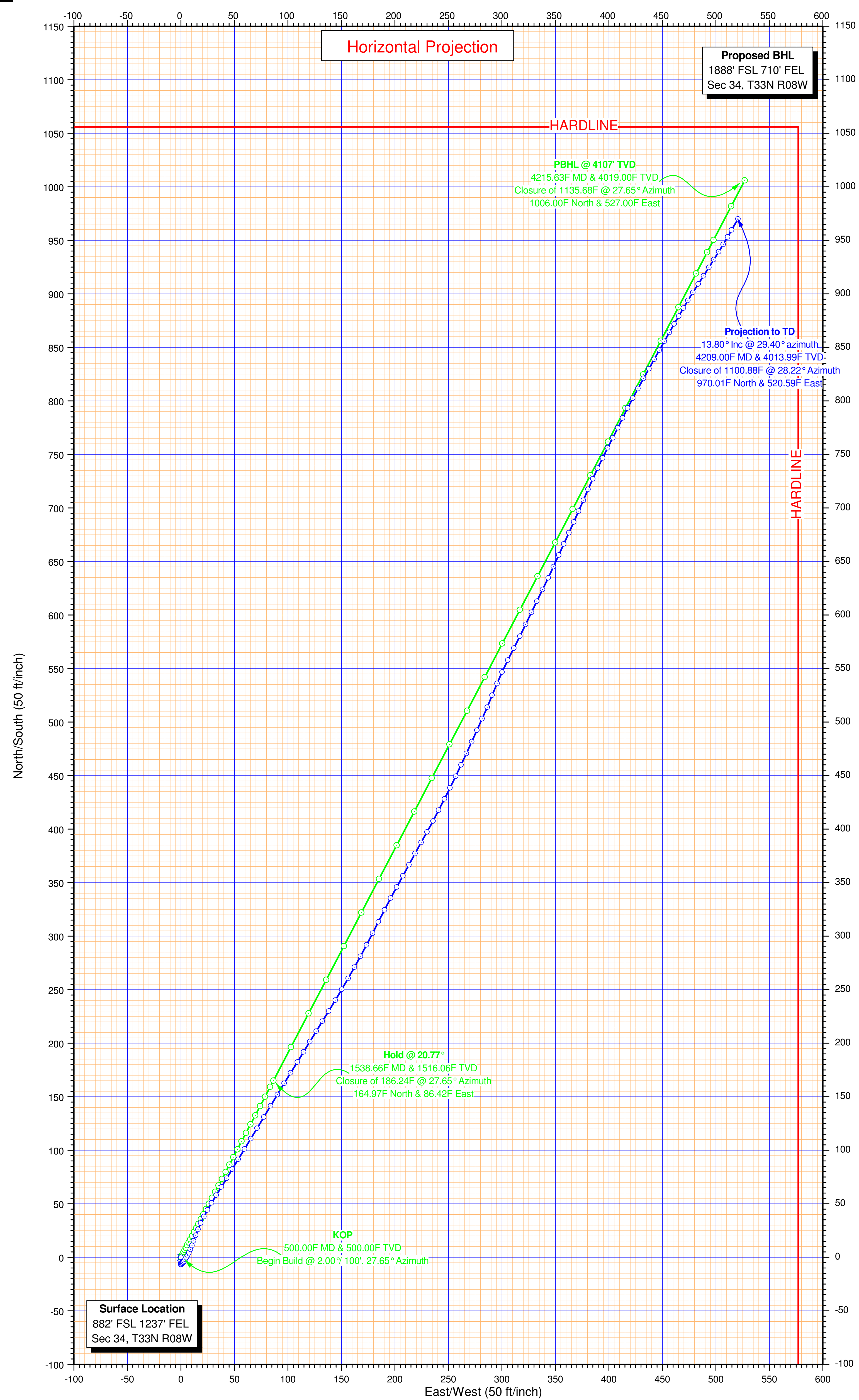
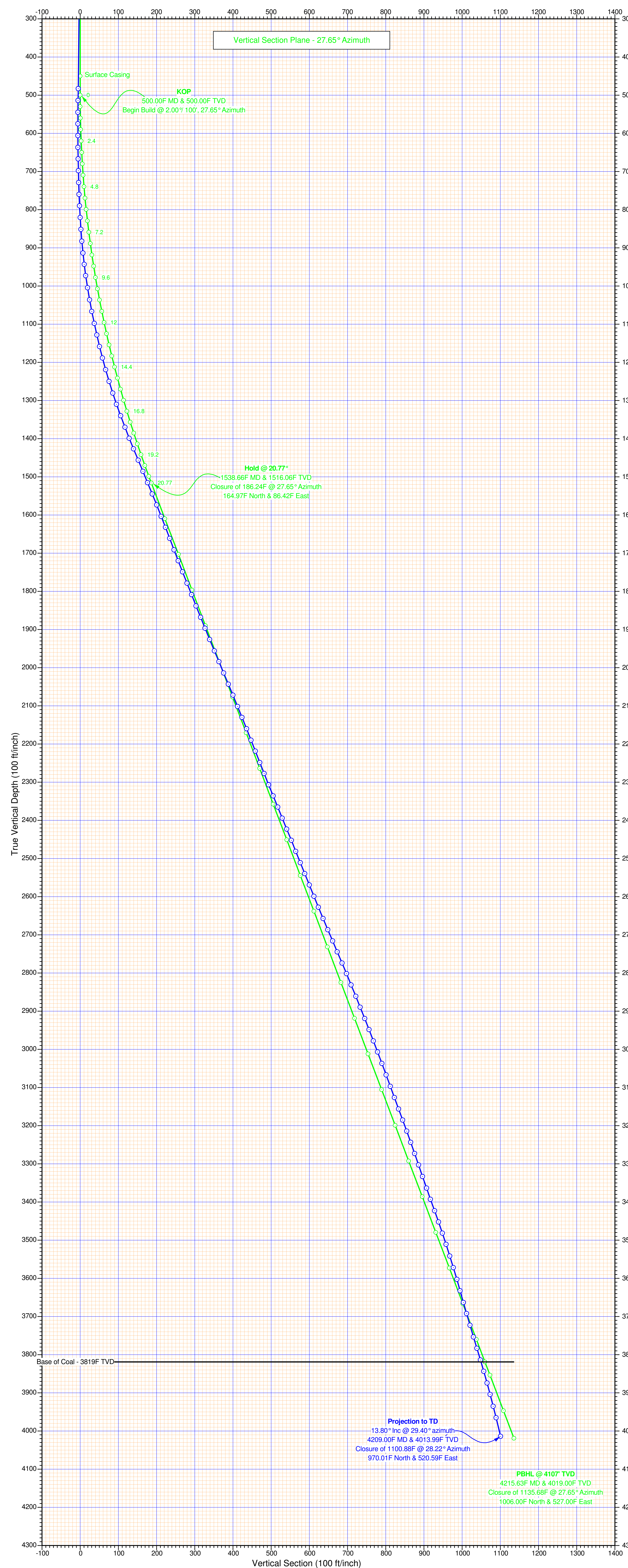




Black Hills E&P
 Ute #34-34
 La Plata County, Colorado
 Rig: Aztec 507



Magnetics Report
 Magnetic Model: IGRF 2005.MIF
 Date : 2010/07/06 = 2010.512
 Dip Angle : 63.78
 Declination : 10.00 Correction to Use
 Field Strength : 51106.82 (nT)

Map Projection
 Latitude : 37° 03.0000' 20.9160"
 Decimal Lat. : 37.05581 °
 Longitude : -107° 41.0000' 59.2800"
 Decimal Long. : -107.69980 °

