
BILL BARRETT CORPORATION E-BILL

**GGU DALEY 14D-19-691
MAMM CREEK
Garfield County , Colorado**

Cement Surface Casing
15-Mar-2011

Post Job Summary

The Road to Excellence Starts with Safety

Sold To #: 343492	Ship To #: 2841343	Quote #:	Sales Order #: 8022031
Customer: BILL BARRETT CORPORATION E-BILL	Customer Rep: South, Jody		
Well Name: GGU DALEY	Well #: 14D-19-691	API/UWI #: 05-045-19581	
Field: MAMM CREEK	City (SAP): UNKNOWN	County/Parish: Garfield	State: Colorado
Lat: N 39.507 deg. OR N 39 deg. 30 min. 23.818 secs.	Long: W 107.599 deg. OR W -108 deg. 24 min. 3.478 secs.		
Contractor: Pro Petro	Rig/Platform Name/Num: Pro Petro		
Job Purpose: Cement Surface Casing			
Well Type: Development Well	Job Type: Cement Surface Casing		
Sales Person: METLI, MARSHALL	Srv Supervisor: HUGENTOBLE, LOGAN	MBU ID Emp #: 447333	

Job Personnel

HES Emp Name	Exp Hrs	Emp #	HES Emp Name	Exp Hrs	Emp #	HES Emp Name	Exp Hrs	Emp #
ANDERSON, ADAM S	8	456683	HUGENTOBLE, LOGAN Mark	8	447333	RAMSEY, STANTON Michael	8	477609

Equipment

HES Unit #	Distance-1 way	HES Unit #	Distance-1 way	HES Unit #	Distance-1 way	HES Unit #	Distance-1 way
10744648C	60 mile	10829463	60 mile	10867094	60 mile	10897925	60 mile
10998508	60 mile						

Job Hours

Date	On Location Hours	Operating Hours	Date	On Location Hours	Operating Hours	Date	On Location Hours	Operating Hours
3/15/11	8	1						
TOTAL	Total is the sum of each column separately							

Job

Formation Name					Date				Time		Time Zone				
Formation Depth (MD)		Top		Bottom		Called Out			15 - Mar - 2011		06:30		MST		
Form Type		BHST		On Location			15 - Mar - 2011		13:00		MST				
Job depth MD		850. ft		Job Depth TVD		850. ft		Job Started		15 - Mar - 2011		17:48		MST	
Water Depth		Wk Ht Above Floor		4. ft		Job Completed		15 - Mar - 2011		18:42		MST			
Perforation Depth (MD)		From		To		Departed Loc			15 - Mar - 2011		20:00		MST		

Well Data

Description	New / Used	Max pressure psig	Size in	ID in	Weight lbm/ft	Thread	Grade	Top MD ft	Bottom MD ft	Top TVD ft	Bottom TVD ft
Surface Casing	Unknown		9.625	8.921	36.		J-55	.	807.	.	807.

Sales/Rental/3rd Party (HES)

Description	Qty	Qty uom	Depth	Supplier
PLUG,CMTG,TOP,9 5/8,HWE,8.16 MIN/9.06 MA	1	EA		
R/A DENSOMETER W/CHART RECORDER,/JOB,ZI	1	JOB		
PORT. DATA ACQUIS. W/OPTICEM RT W/HES	1	EA		

Tools and Accessories

Type	Size	Qty	Make	Depth	Type	Size	Qty	Make	Depth	Type	Size	Qty	Make
Guide Shoe					Packer					Top Plug	9.625	1	HES
Float Shoe					Bridge Plug					Bottom Plug			
Float Collar					Retainer					SSR plug set			
Insert Float										Plug Container	9.625	1	HES
Stage Tool										Centralizers			

Miscellaneous Materials

Gelling Agt	Conc	Surfactant	Conc	Acid Type	Qty	Conc	%
Treatment Fld	Conc	Inhibitor	Conc	Sand Type	Size	Qty	

Fluid Data

Stage/Plug #: 1

Fluid #	Stage Type	Fluid Name	Qty	Qty uom	Mixing Density lbm/gal	Yield ft ³ /sk	Mix Fluid Gal/sk	Rate bbl/min	Total Mix Fluid Gal/sk
1	WATER SPACER		20.00	bbl	.	.0	.0	.0	
2	Lead Cement	VERSACEM (TM) SYSTEM (452010)	120.0	sacks	12.3	2.38	13.77		13.77
	13.77 Gal	FRESH WATER							
3	Tail Cement	SWIFTCEM (TM) SYSTEM (452990)	120.0	sacks	14.2	1.43	6.85		6.85
	6.85 Gal	FRESH WATER							
4	DISPLACEMENT		60.00	bbl	.	.0	.0	.0	
Calculated Values		Pressures		Volumes					
Displacement	60	Shut In: Instant		Lost Returns		Cement Slurry	80	Pad	
Top Of Cement	SURFACE	5 Min		Cement Returns	21	Actual Displacement	60	Treatment	
Frac Gradient		15 Min		Spacers	20	Load and Breakdown		Total Job	
Rates									
Circulating		Mixing	5	Displacement	5	Avg. Job		5	
Cement Left In Pipe	Amount	44 ft	Reason	Shoe Joint					
Frac Ring # 1 @	ID	Frac ring # 2 @	ID	Frac Ring # 3 @	ID	Frac Ring # 4 @	ID		
The Information Stated Herein Is Correct				Customer Representative Signature					

The Road to Excellence Starts with Safety

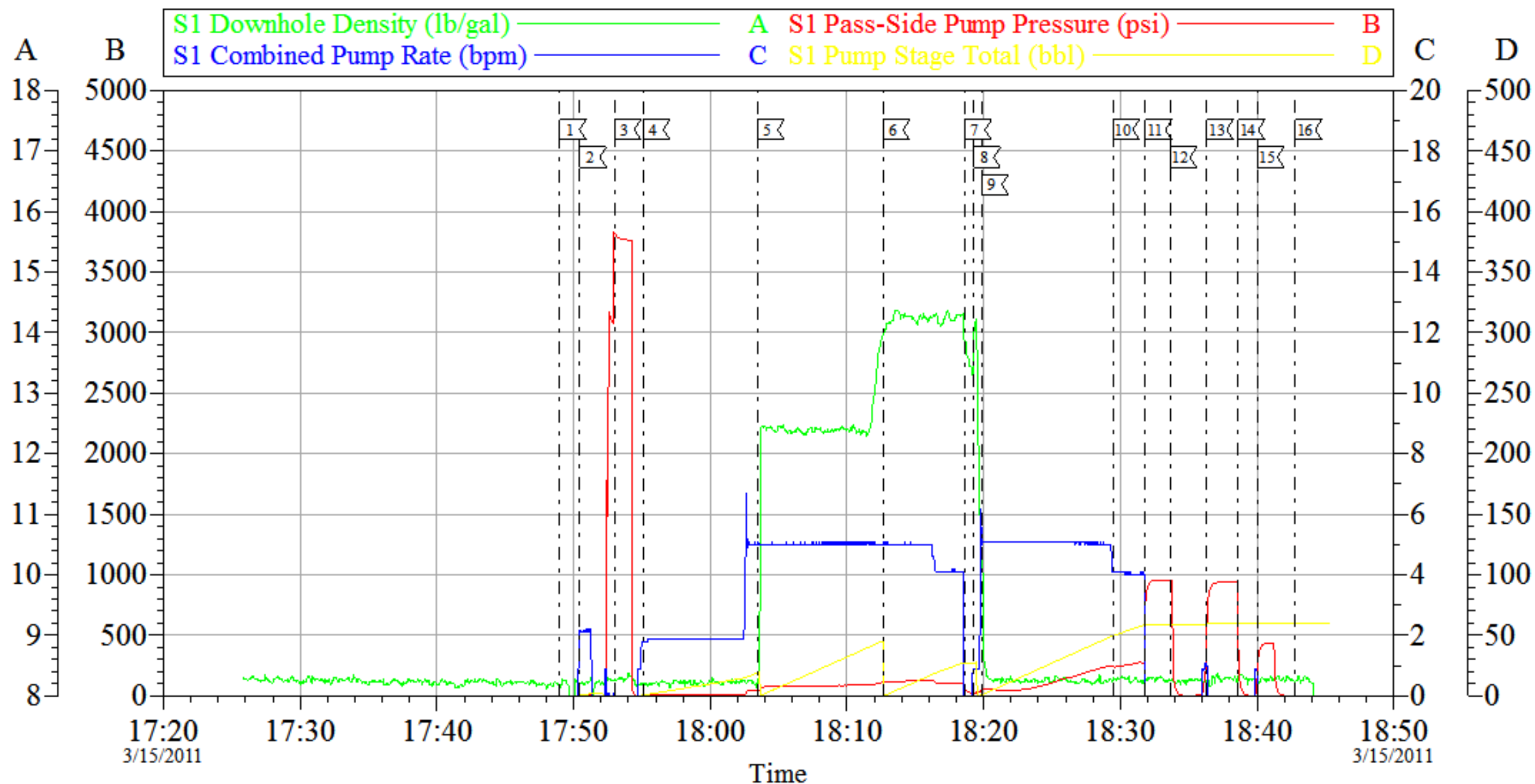
Sold To #: 343492	Ship To #: 2841343	Quote #:	Sales Order #: 8022031
Customer: BILL BARRETT CORPORATION E-BILL		Customer Rep: South, Jody	
Well Name: GGU DALEY		Well #: 14D-19-691	API/UWI #: 05-045-19581
Field: MAMM CREEK	City (SAP): UNKNOWN	County/Parish: Garfield	State: Colorado
Legal Description:			
Lat: N 39.507 deg. OR N 39 deg. 30 min. 23.818 secs.		Long: W 107.599 deg. OR W -108 deg. 24 min. 3.478 secs.	
Contractor: Pro Petro		Rig/Platform Name/Num: Pro Petro	
Job Purpose: Cement Surface Casing			Ticket Amount:
Well Type: Development Well		Job Type: Cement Surface Casing	
Sales Person: METLI, MARSHALL		Srv Supervisor: HUGENTOBLE, LOGAN	MBU ID Emp #: 447333

Activity Description	Date/Time	Cht #	Rate bbl/min	Volume bbl		Pressure psig		Comments
				Stage	Total	Tubing	Casing	
Arrive At Loc	03/15/2011 01:00							RIG STILL RUNNING CASING
Assessment Of Location Safety Meeting	03/15/2011 01:00							ALL HES EMPLOYEES
Rig-Up Equipment	03/15/2011 01:10							1 HT-400 PUMP TRUCK, 1 660 BULK TRUCK, 1 F-450 P/U, 1 PLUG CONTAINER
Call Out	03/15/2011 06:30							
Pre-Convoy Safety Meeting	03/15/2011 10:00							ALL HES EMPLOYEES
Pre-Job Safety Meeting	03/15/2011 17:48							ALL HES EMPLOYEES, RIG CREW, CO REP AND ANY 3RD PARTY VENDORS
Start Job	03/15/2011 17:48							TP 830.7 FT, TD 850 FT, FC 786.7 FT, HOLE 12.25", MUD WT AIR, RATE WILL BE 6, WILL BUMP 500 PSI OVER LAND PSI
Pump Water	03/15/2011 17:50		2	2			16.0	FILL LINES PRIOR TO PRESSURE TESTING LINES
Pressure Test	03/15/2011 17:52							NO LEAKS, KICK OUTS SET TO 3000 PSI FOR TEST.
Pump Spacer 1	03/15/2011 17:55		4	20			87.0	FRESH WATER
Activity Description	Date/Time	Cht #	Rate bbl/min	Volume bbl		Pressure psig		Comments
				Stage	Total	Tubing	Casing	

Pump Lead Cement	03/15/2011 18:03		5	50			98.0	120 SKS VERSACEM CMT TO BE MIXED AT 12.3 PPG, 2.38 YIELD, 13.77 GAL/SK, CMT TO BE WEIGHED VIA PRESSURE BALANCED MUD SCALES WET AND DRY SAMPLES SUBMITTED.
Pump Tail Cement	03/15/2011 18:12		5	30			106.0	120 SKS SWIFTCM CMT TO BE MIXED AT 14.2 PPG, 1.43 YIELD, 6.85 GAL/SK, CMT TO BE WEIGHED VIA PRESSURE BALANCED MUD SCALES, WET AND DRY SAMPLES SUBMITTED,
Shutdown	03/15/2011 18:18							
Drop Plug	03/15/2011 18:19							PLUG LAUNCHED
Pump Displacement	03/15/2011 18:19		5	60			125.0	FRESH WATER
Slow Rate	03/15/2011 18:29		4				312.0	10 BBLS PRIOR TO CALCULATED DISPLACEMENT
Bump Plug	03/15/2011 18:31						875.0	PLUG LANDED, 21 BBLS CEMENT TO SURFACE
Check Floats	03/15/2011 18:33							FLOATS DID NOT HOLD
Bump Plug	03/15/2011 18:36						875.0	
Check Floats	03/15/2011 18:38							FLOATS DID NOT HOLD
Shut In Well	03/15/2011 18:40						300.0	WILL LEAVE HEAD ON WITH VALVE
End Job	03/15/2011 18:42							THANK YOU FOR USING HES LOGAN HUGENTOBLE AND CREW
Post-Job Safety Meeting (Pre Rig-Down)	03/15/2011 18:50							ALL HES EMPLOYEES
Rig-Down Equipment	03/15/2011 19:00							
Pre-Convoy Safety Meeting	03/15/2011 20:00							ALL HES EMPLOYEES
Crew Leave Location	03/15/2011 20:10							LOCATION CLEAN

BILL BARRETT

9.625" SURFACE PIPE



Customer: BILL BARRETT
Well Description: GGU DALEY
Company Rep: PETE LAUER

Job Date: 15-Mar-2011
Job Type: SURFACE
Cement Supervisor: LOGAN HUGENTOBler

Sales Order #: 8022031
ADC Used: YES
Elite #6/ Operator: ADAM ANDERSON

OptiCem v6.4.10
15-Mar-11 18:55