



Ensign 14

Whiting Oil & Gas Corporation

Rev 0



WELL	Chalk Bluffs 36-13H	FIELD	Weld County, CO	STRUCTURE	36-10N-60W
------	---------------------	-------	-----------------	-----------	------------

Magnetic Parameters	Surface Location	NAD83 Colorado State Plane, Northern Zone, US Feet	Miscellaneous
Model: BGGM 2010	Lat: N 40 47 28.104	1534356.83 ftUS	Slot: Chalk Bluffs 36-13H
Dip: 67.503°	Lon: W 104 2 47.688	Grid Conv: 0.93910329°	Plan: ST02 R0 em 17mar11
Mag Dec: 8.486°		Easting: 3402438.89 ftUS	Scale Fact: 1.00000128
Date: March 17, 2011			TVD Ref: KB(5238ft above MSL)
FS: 53410.8nT			Srvy Date: March 17, 2011

Northings		Eastings		Surface Location	
Target Description	Major Axis	N(±S)	E(±W)	TVD	YSec
Chalk Bluffs 36-13H	Point	1.00	40.79	-104.01	6665.10
PBHL/TD					3846.78

Critical Point		MD		INCL		AZIM		TVD		YSEC		N(±S)		E(±W)		DLS	
Tie-In	7005.00	84.92	106.38	6739.00	67.50	536.40	-161.25	573.02	6.07								
EOC	7064.00	87.98	108.25	6742.28	67.50	536.40	-161.25	573.02	6.07								
EOC	7228.94	88.00	100.00	6748.08	79.87	-201.44	732.75	5.00									
EOC	7369.94	95.00	100.00	6744.42	89.95	-225.73	870.47	5.00									
KOP	8169.00	95.00	100.00	6674.69	169.15	-364.13	1655.58	0.00									
EOC	8381.20	90.02	109.37	6665.41	193.37	-1903.15	1903.15	5.00									
Chalk Bluffs 36-13H	10328.09	90.02	109.37	6665.00	3846.78	-1065.58	3696.82	0.00									
PBHL/TD																	

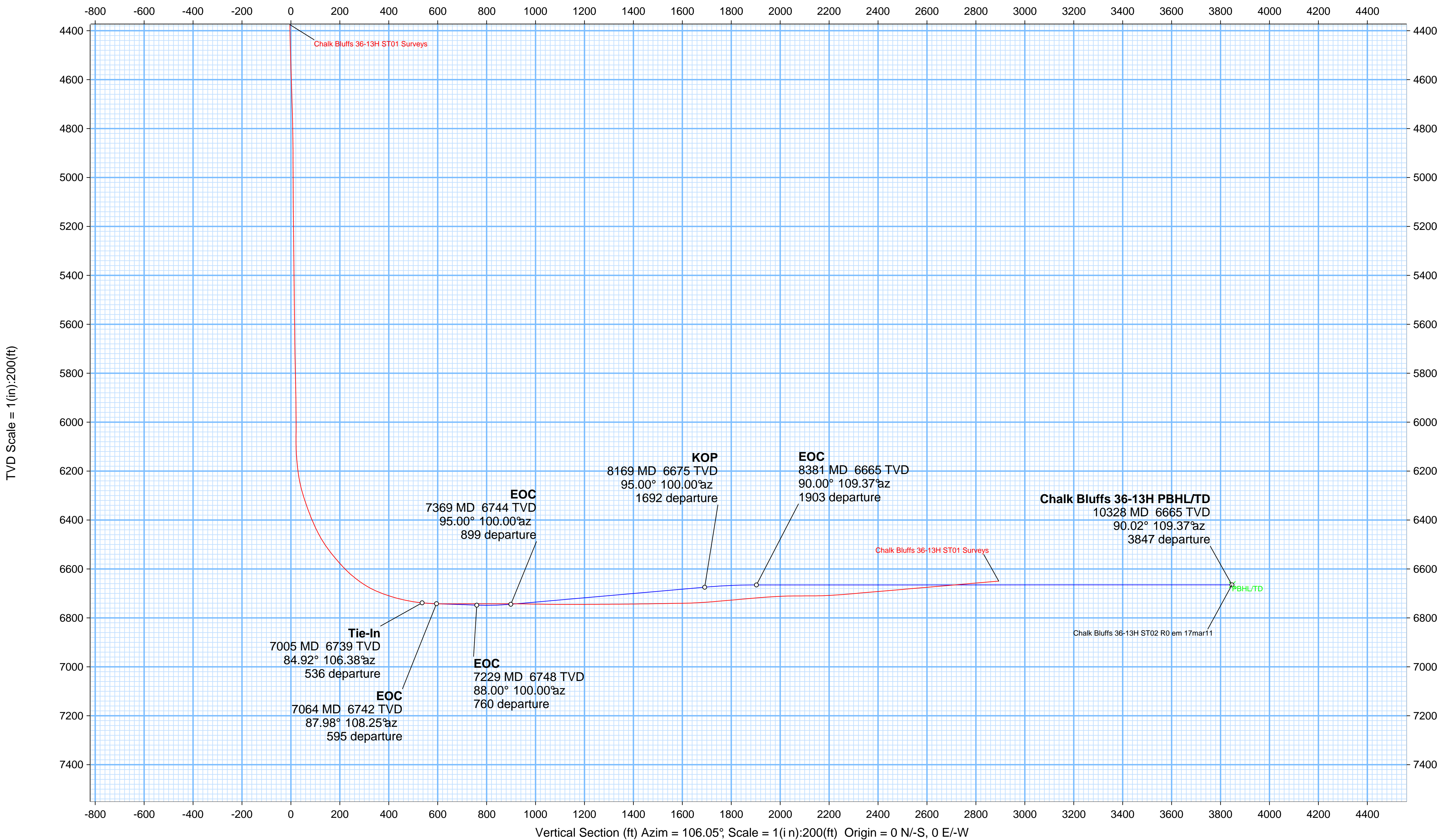
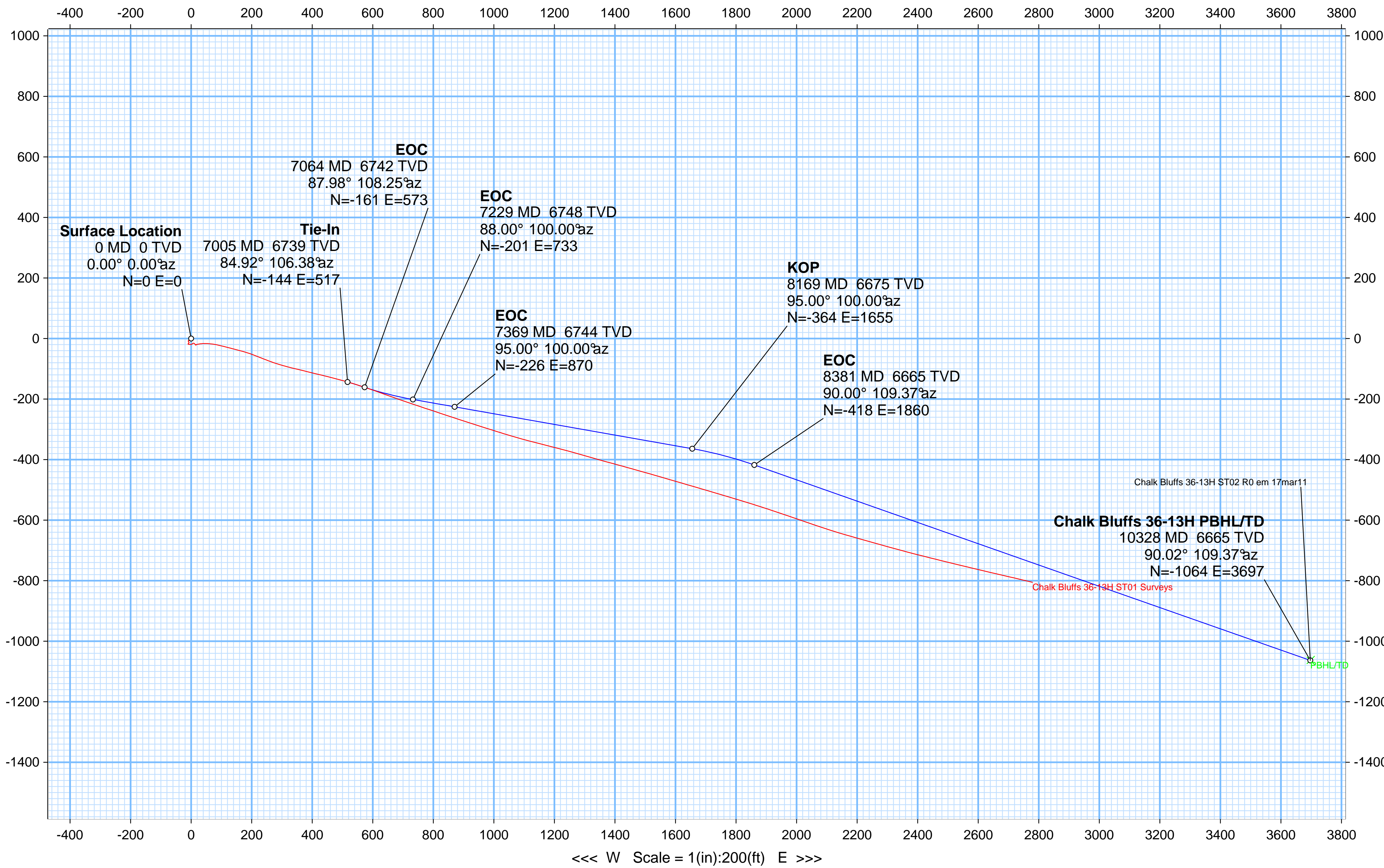
FromB	ToB	Action
7005.00	7064.00	Curve 6.07°/100ft
		From tie 84.92° to 87.98°
		From Az 106.38° to 108.25°
		From 6739.00 to 6742.28 ft TVD
7064.00	7228.94	Curve 5.00°/100ft
		From tie 87.98° to 88.00°
		From Az 106.38° to 100.00°
		From 6742.28 ft TVD to 6748.08 ft TVD
7228.94	7369.94	Hold 5.00°/100ft
		From tie 88.00° to 95.00°
		On Az 100.00°
		From 6748.08 ft TVD to 6744.42 ft TVD
7369.94	8169.00	Hold 5.00°/100ft
		From tie 95.00° to 90.02°
		From Az 100.00° to 109.37°
		From 6744.42 ft TVD to 6665.41 ft TVD
8169.00	8381.20	Curve 5.00°/100ft
		From tie 90.02° to 90.02°
		From Az 109.37° to 109.37°
		From 6665.41 ft TVD to 6665.00 ft TVD
8381.20	10328.09	Curve 0.00°/100ft
		From tie 90.02° to 90.02°
		From Az 109.37° to 109.37°
		From 6665.00 ft TVD to 6665.00 ft TVD

Well Plot Location Record

CONTROLLED	
Plan ref	Chalk Bluffs 36-13H ST02 R0 em 17mar11
Drawing ref	WOP - Chalk Bluffs 36-13H ST02 R0 em 17mar11 gfs
Copy number	1
Author	Jeff Wilson
Date	17-Mar-11

Copies
1 - Stage 14 - 200
1 - Stage 14 - 200
1 - Stage 14 - 200
1 - Stage 14 - 200
1 - Stage 14 - 200
1 - Stage 14 - 200

<<< S Scale = 1(in):200(ft) N >>>



Drawn By: Jeff Wilson
Date Created: March 17, 2011 02:55:00 PM
Checked By: Ed Moore
Checked Date:
Approved By:
Approved Date: