

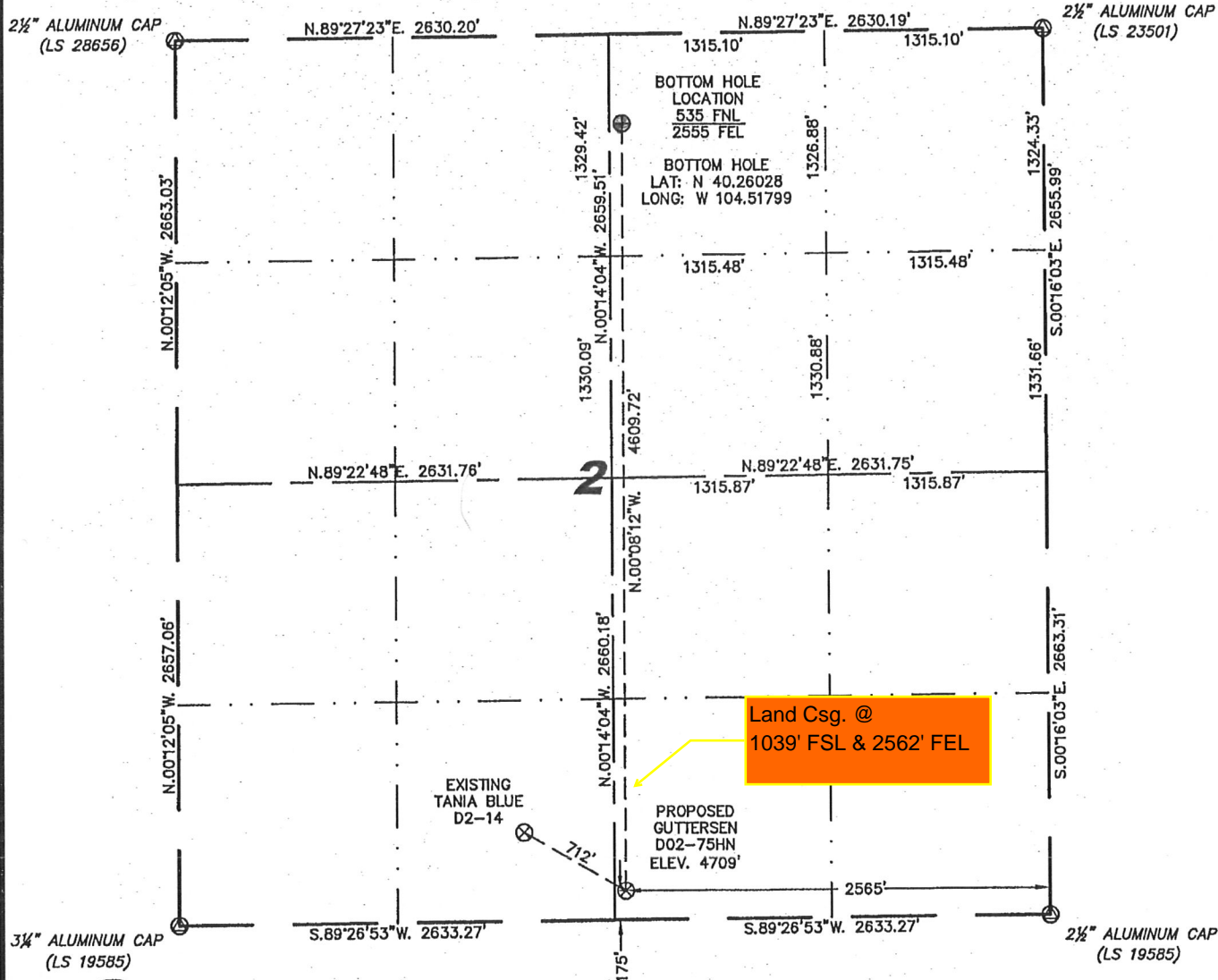
Stell Surveying Services, LLC

1102 West 19th Street P.O. BOX 2073

Cheyenne, Wyoming 82001

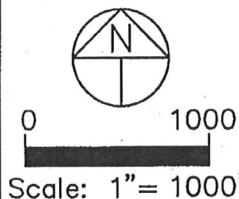
WELL LOCATION CERTIFICATE
THIS MAP DOES NOT REPRESENT A BOUNDARY SURVEY

SECTION 2
TOWNSHIP 3 NORTH
RANGE 64 WEST



IN ACCORDANCE WITH A REQUEST FROM BRIAN DeROSE - NOBLE ENERGY INC, STELL SURVEYING SERVICES, LLC HAS DETERMINED THE LOCATION OF THE GUTTERSEN D02-75HN WELL TO BE 175' FSL, 2565' FEL, AS MEASURED AT NINETY (90) DEGREES FROM THE SECTION LINES, SECTION 2, TOWNSHIP 3 NORTH, RANGE 64 WEST, 6TH PRINCIPLE MERIDIAN, WELD COUNTY, COLORADO.

I HEREBY CERTIFY THAT THIS WELL LOCATION CERTIFICATE WAS PREPARED BY ME, OR UNDER MY DIRECT SUPERVISION, THAT THE FIELD WORK WAS COMPLETED ON 11/18/2010, FOR AND ON BEHALF OF NOBLE ENERGY INC, THAT IT IS NOT A LAND SURVEY PLAT OR AN IMPROVEMENT SURVEY PLAT, AND THAT IT IS NOT TO BE RELIED UPON FOR ESTABLISHMENT OF FENCE, BUILDING, OR OTHER FUTURE IMPROVEMENT LINES.



NOTES:

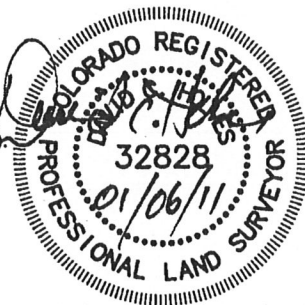
- 1) BASIS OF BEARINGS FOR THIS MAP ARE BASED UPON GPS OBSERVATIONS MADE ON 04/28/2008 BETWEEN MONUMENTS LOCATED AT THE SOUTHEAST SECTION CORNER AND THE NORTHEAST SECTION CORNER OF SAID SECTION AND WITH ALL BEARINGS SHOWN HEREON RELATIVE THERETO.
- 2) COORDINATES SHOWN ARE COLORADO STATE PLANE (NORTH ZONE) NAD 83.
- 3) ELEVATIONS ARE BASED UPON NGS OPUS SOLUTION NAVD 88 DATUM.
- 4) THE NEAREST EXISTING WELL IS: TANIA BLUE D2-14, 712' NORTHWEST.
- 5) SEE LOCATION DRAWING FOR ALL IMPROVEMENTS WITHIN VISIBLE IMPROVEMENTS LIMIT.
- 6) THE LOCATION FALLS IN PASTURE LAND.

LATITUDE & LONGITUDE (NAD 83 SURFACE HOLE)
LATITUDE: N 40.24763°
LONGITUDE: W 104.51813°
PDOP: 2.2
QUARTER-QUARTER: SW/4SE/4
NEAREST PROPERTY LINE: 175' SOUTH

LEGEND

- ⊗ FOUND SURVEY MONUMENT PER MONUMENT RECORD - EXCEPTIONS NOTED.
- (C) CALCULATED DIMENSION

NOTICE: According to Colorado law you MUST commence any legal action based upon any defect in this W.L.C. within three years after you first discover such defect. In no event may any action based upon any defect in this W.L.C. be commenced more than ten years from this sold date of the certification shown hereon.



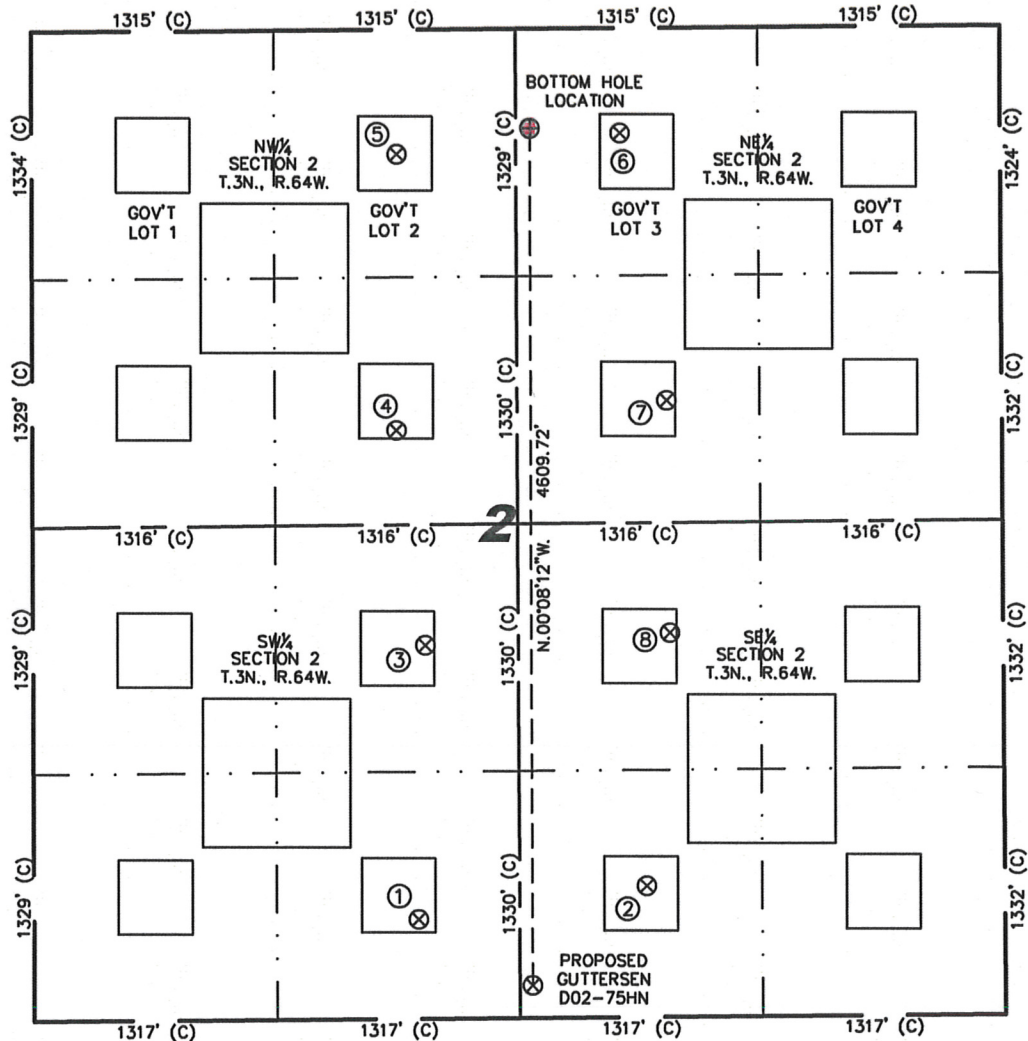
Completed 1/6/2011

David C. Holmes
Professional Land Surveyor Registration No. 32828
State of Colorado

JOB #:10086

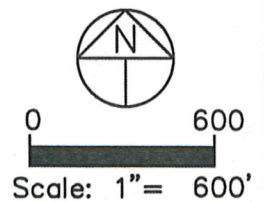
SITE SKETCH – GUTTERSEN D02-75HN

SECTIONS 2
TOWNSHIP 3 NORTH
RANGE 64 WEST



①	②	③	④	⑤	⑥	⑦
TANIA BLUE D2-14 SE/SW SEC. 2 536' FSL 2085' FWL EL 4703' N 40.24862 W 104.52033 PDOP 1.8	TANIA BLUE D2-15 SW/SE SEC. 2 706' FSL 1942' FEL EL 4707' N 40.24908 W 104.51589 PDOP 2.0	TANIA BLUE D2-11 NE/SW SEC. 2 2010' FSL 2127' FWL EL 4704' N 40.25267 W 104.52014 PDOP 1.7	DONOVAN D2-6J1 SE/NW SEC. 2 2152' FNL 1975' FWL EL 4710' N 40.25585 W 104.52065 PDOP 1.6	DONOVAN D2-3J1 NE/NW SEC. 2 669' FNL 1981' FWL EL 4711' N 40.25992 W 104.52059 PDOP 1.6	KERN D2-2J1 NW/NE SEC. 2 564' FNL 2064' FEL EL 4714' N 40.26020 W 104.51623 PDOP 1.6	HSR BOOTH 7-2 SW/NE SEC. 2 2001' FNL 1819' FEL EL 4706' N 40.25625 W 104.51538 PDOP 1.9

⑧
TANIA BLUE
D2-10
NW/SE SEC. 2
2068' FSL
1808' FEL
EL 4720'
N 40.25282
W 104.51537
PDOP 2.1



NOTES:

- THIS SKETCH DOES NOT REPRESENT A BOUNDARY SURVEY.
- THE DATUM FOR THE LATITUDES AND LONGITUDES ON THIS SKETCH IS NAD83.