

Zones: C/N  
Surface: 650 ft / 212 sks  
Production: 7203 ft/ 770 sks.

Steil Surveying Services, LLC

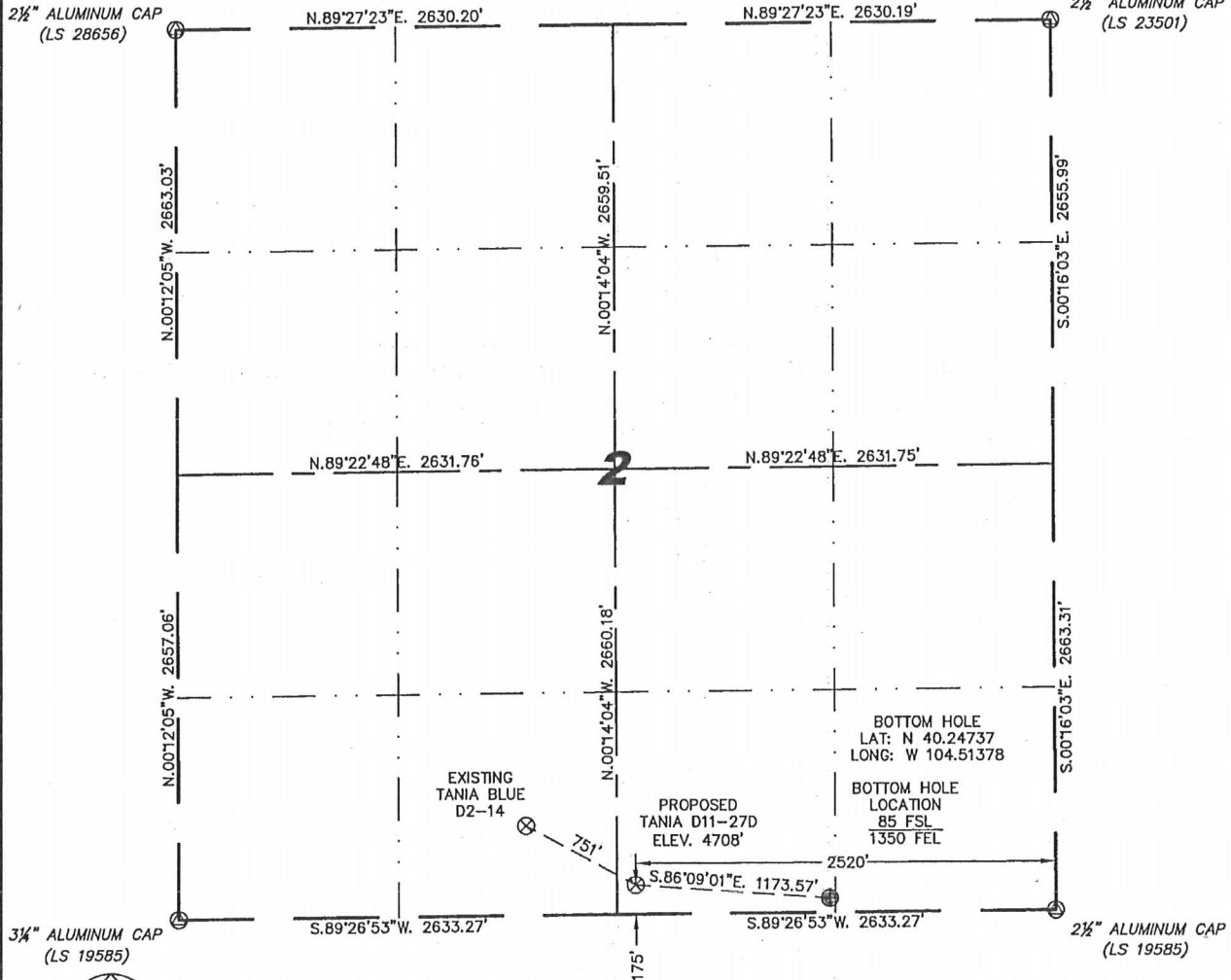
1102 West 19th Street P.O. BOX 2073

Cheyenne, Wyoming 82009

# WELL LOCATION CERTIFICATE

THIS MAP DOES NOT REPRESENT A BOUNDARY SURVEY

SECTION 2  
TOWNSHIP 3 NORTH  
RANGE 64 WEST



IN ACCORDANCE WITH A REQUEST FROM BRIAN DeROSE - NOBLE ENERGY INC, STEIL SURVEYING SERVICES, LLC HAS DETERMINED THE LOCATION OF THE TANIA D11-27D WELL TO BE 175' FSL, 2520' FEL, AS MEASURED AT NINETY (90) DEGREES FROM THE SECTION LINES, SECTION 2, TOWNSHIP 3 NORTH, RANGE 64 WEST, 6TH PRINCIPLE MERIDIAN, WELD COUNTY, COLORADO.

I HEREBY CERTIFY THAT THIS WELL LOCATION CERTIFICATE WAS PREPARED BY ME, OR UNDER MY DIRECT SUPERVISION, THAT THE FIELD WORK WAS COMPLETED ON 11/18/2010, FOR AND ON BEHALF OF NOBLE ENERGY INC, THAT IT IS NOT A LAND SURVEY PLAT OR AN IMPROVEMENT SURVEY PLAT, AND THAT IT IS NOT TO BE RELIED UPON FOR ESTABLISHMENT OF FENCE, BUILDING, OR OTHER FUTURE IMPROVEMENT LINES.

## NOTES:

- 1) BASIS OF BEARINGS FOR THIS MAP ARE BASED UPON GPS OBSERVATIONS MADE ON 04/28/2008 BETWEEN MONUMENTS LOCATED AT THE SOUTHEAST SECTION CORNER AND THE NORTHEAST SECTION CORNER OF SAID SECTION AND WITH ALL BEARINGS SHOWN HEREON RELATIVE THERETO.
- 2) COORDINATES SHOWN ARE COLORADO STATE PLANE (NORTH ZONE) NAD 83.
- 3) ELEVATIONS ARE BASED UPON NGS OPUS SOLUTION NAVD 88 DATUM.
- 4) THE NEAREST EXISTING WELL IS: TANIA BLUE D2-14, 751' NORTHWEST.
- 5) SEE LOCATION DRAWING FOR ALL IMPROVEMENTS WITHIN VISIBLE IMPROVEMENTS LIMIT.
- 6) THE LOCATION FALLS IN PASTURE LAND.

LATITUDE & LONGITUDE (NAD 83 SURFACE HOLE)  
LATITUDE: N 40.24763  
LONGITUDE: W 104.51797  
PDOP: 2.2  
QUARTER-QUARTER: SW/4SE/4  
NEAREST PROPERTY LINE: 175' SOUTH

## LEGEND

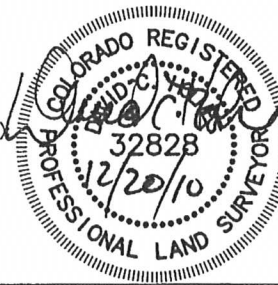
- (C) FOUND SURVEY MONUMENT PER MONUMENT RECORD - EXCEPTIONS NOTED.
- (C) CALCULATED DIMENSION

NOTICE: According to Colorado law you MUST commence any legal action based upon any defect in this W.L.C. within three years after you first discover such defect. In no event may any action based upon any defect in this W.L.C. be commenced more than ten years from this said date of the certification shown hereon.

David C. Holmes  
Professional Land Surveyor Registration No. 32828  
State of Colorado

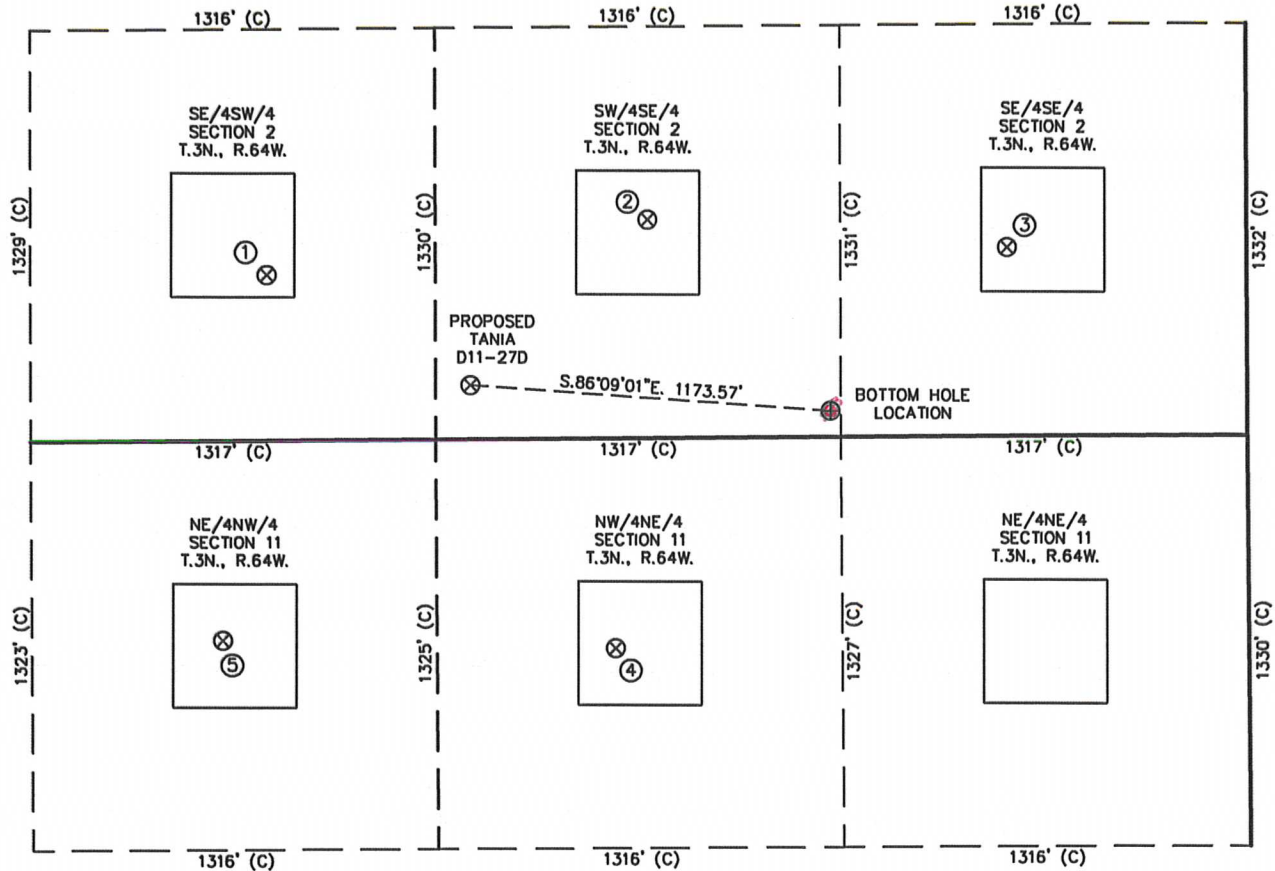
JOB #: 10086

Completed 12/16/2010



# SITE SKETCH – TANIA D11-27D

SECTIONS 2  
TOWNSHIP 3 NORTH  
RANGE 64 WEST



①	②	③	④	⑤
TANIA BLUE D2-14 SE/SW SEC. 2 536' FSL 2085' FWL EL 4703' N 40.24862 W 104.52033 PDOP 1.8	TANIA BLUE D2-15 SW/SE SEC. 2 706' FSL 1942' FEL EL 4707' N 40.24908 W 104.51589 PDOP 2.0	TANIA BLUE D2-16 SE/SE SEC. 2 610' FSL 775' FEL EL 4714' N 40.24881 W 104.51171 PDOP 2.0	DALBEY D11-2 NW/NE SEC. 11 678' FNL 2052' FEL EL 4710' N 40.24528 W 104.51630 PDOP 2.2	TWO E RANCH 2-11 NE/NW SEC. 11 646' FNL 1937' FWL EL 4713' N 40.24538 W 104.52087 PDOP 2.7

## NOTES:

- THIS SKETCH DOES NOT REPRESENT A BOUNDARY SURVEY.
- THE DATUM FOR THE LATITUDES AND LONGITUDES ON THIS SKETCH IS NAD83.

