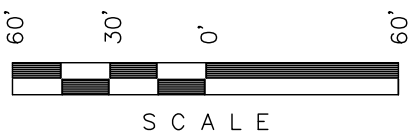


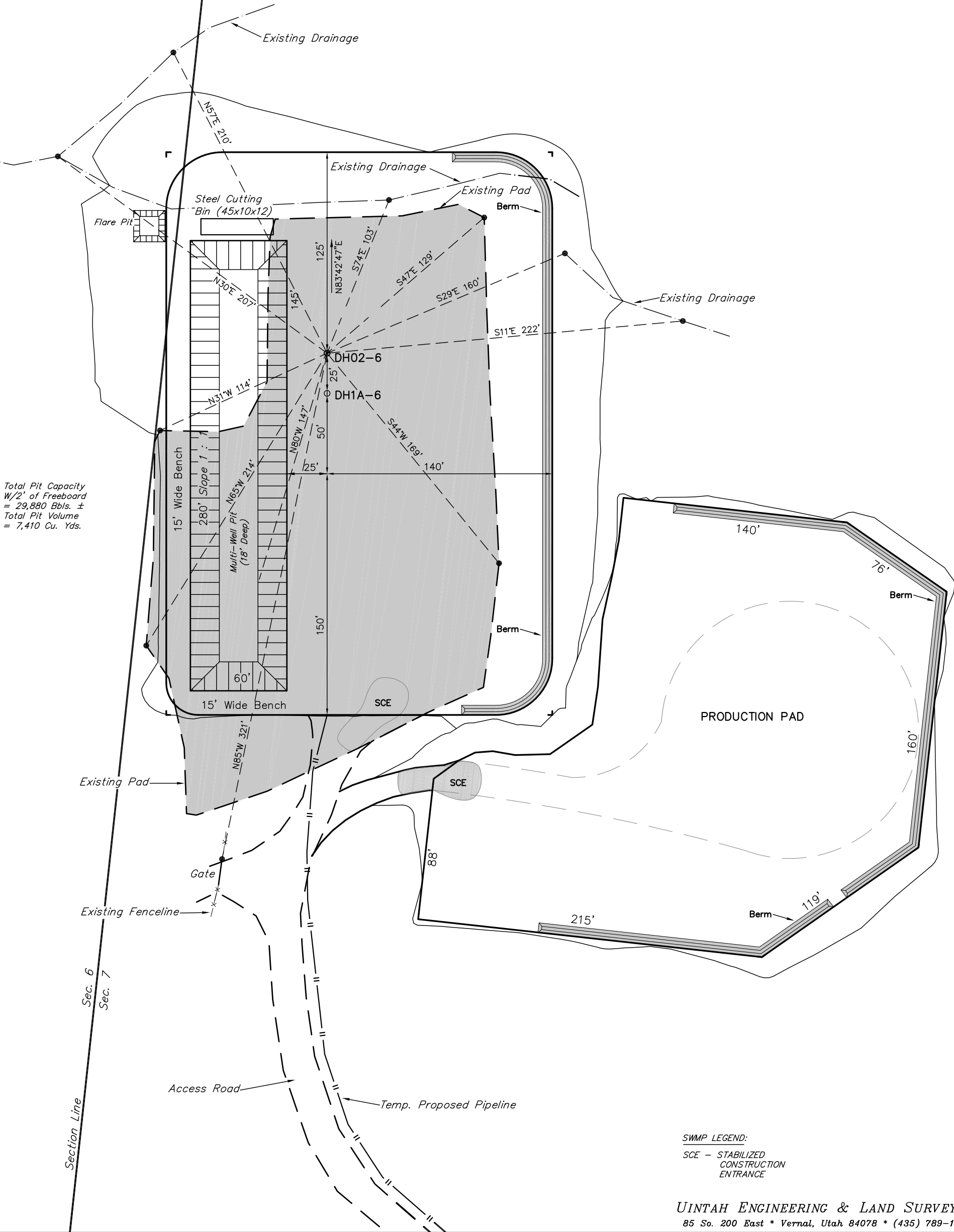
Encana OIL & GAS (USA) INC.
ADDENDUM TO LEGAL PLAT FOR
KIMBALL MTN. B07 799 & PROD. PAD
SECTION 7, T7S, R99W, 6th P.M.
NW 1/4 NE 1/4



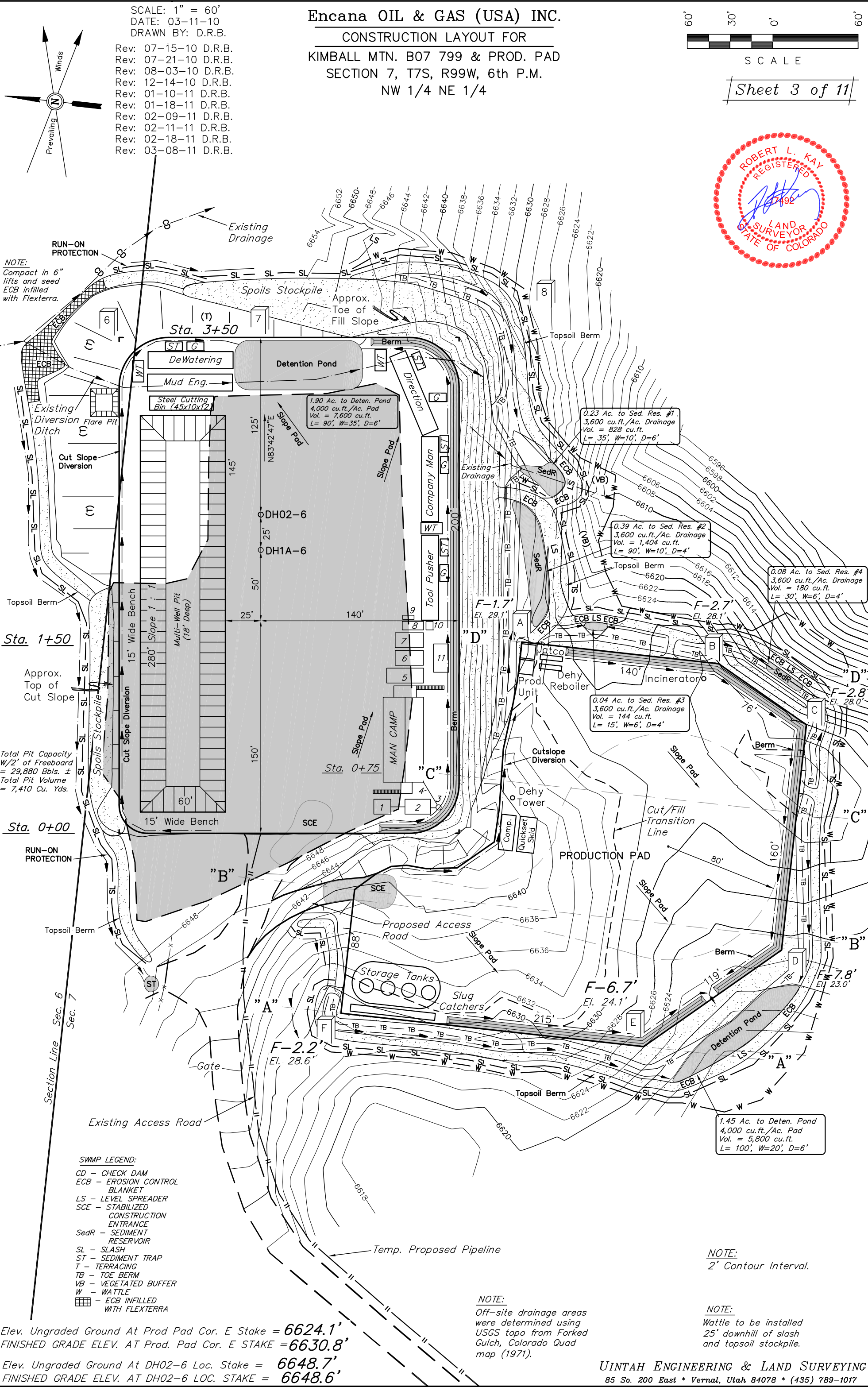
S C A L E

Sheet 1c of 11

SCALE: 1" = 60'
DATE: 03-11-10
DRAWN BY: D.R.B.
Revised: 05-14-10 D.R.B.
Revised: 07-08-10 D.R.B.
Revised: 07-15-10 D.R.B.
Revised: 07-21-10 D.R.B.
Revised: 08-03-10 D.R.B.
Revised: 12-14-10 D.R.B.
Revised: 01-10-11 D.R.B.
Revised: 01-18-11 D.R.B.
Revised: 02-09-11 D.R.B.
Revised: 02-11-11 D.R.B.
Revised: 02-18-11 D.R.B.
Revised: 03-08-11 D.R.B.



SWMP LEGEND:
SCE - STABILIZED
CONSTRUCTION
ENTRANCE



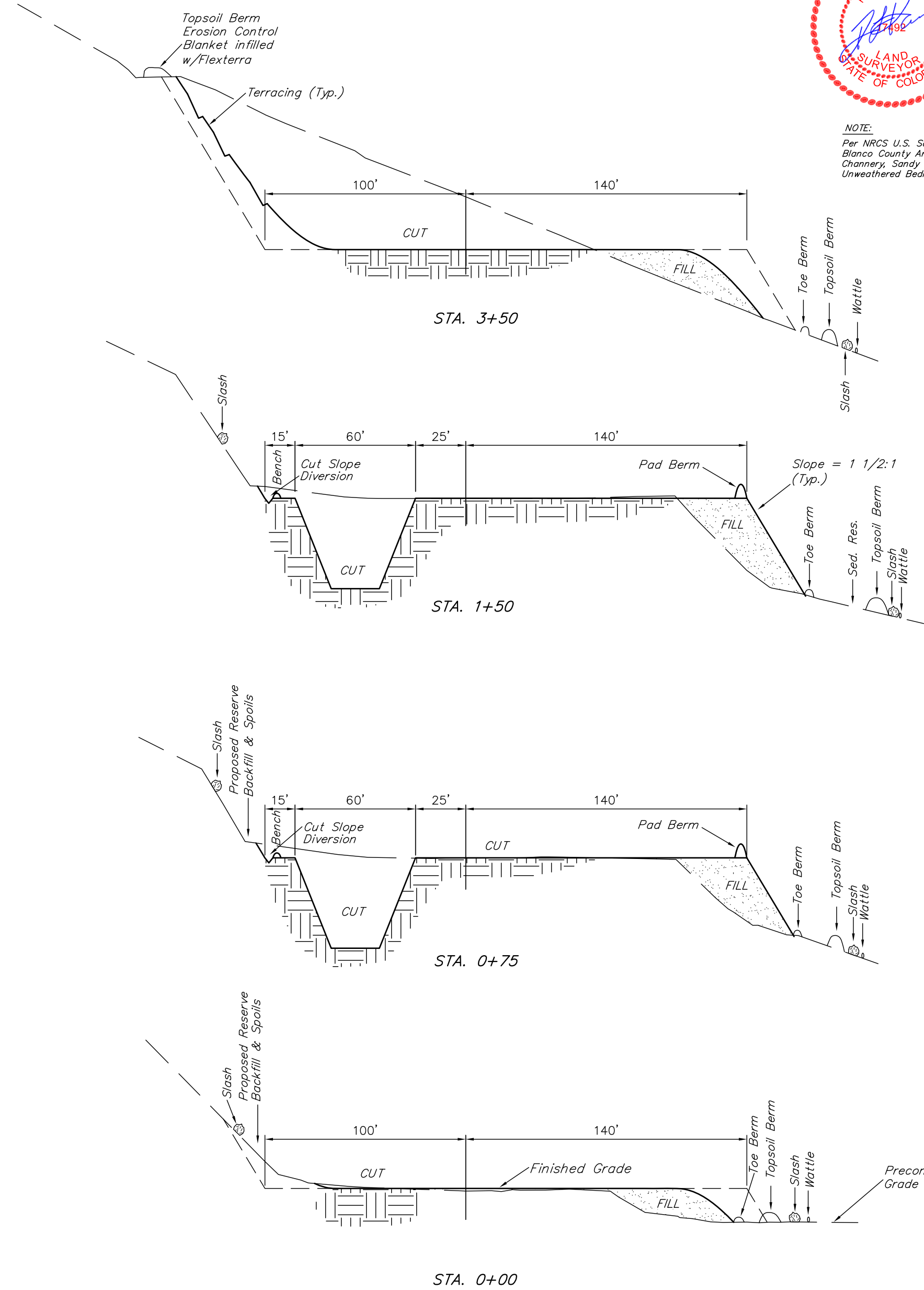
1" = 20'
X-Section
Scale
1" = 50'

DATE: 03-11-10
DRAWN BY: D.R.B.
Revised: 03-19-10 D.R.B.
Revised: 05-14-10 D.R.B.
Revised: 07-08-10 D.R.B.
Revised: 07-15-10 D.R.B.
Revised: 12-14-10 D.R.B.
Revised: 02-18-11 D.R.B.

CONSTRUCTION LAYOUT CROSS SECTION FOR
KIMBALL MTN. B07 799 & PROD. PAD
SECTION 7, T7S, R99W, 6th P.M.
NW 1/4 NE 1/4



NOTE:
Per NRCS U.S. Soil Survey for Rio Blanco County Area, CO. Site has Channery, Sandy Loam, and Unweathered Bedrock.



*NOTE:
USE EXCESS MATERIAL
FOR BERM AROUND PAD.

* NOTE:
FILL QUANTITY INCLUDES
5% FOR COMPACTION

APPROXIMATE YARDAGES FOR WELL PAD

(6") Topsoil Stripping	=	1,000 Cu. Yds.
(New Construction Only)		
Remaining Location	=	19,010 Cu. Yds.
TOTAL CUT	=	20,010 CU.YDS.
FILL	=	6,990 CU.YDS.

EXCESS MATERIAL	=	13,020 Cu. Yds.
Topsoil & Pit Backfill (1/2 Pit Vol.)	=	4,710 Cu. Yds.
EXCESS UNBALANCE (After Interim Rehabilitation)	=	8,310 Cu. Yds.

Encana OIL & GAS (USA) INC.
CONSTRUCTION LAYOUT CROSS SECTION FOR
KIMBALL MTN. B07 799 & PROD. PAD
SECTION 7, T7S, R99W, 6th P.M.
NW 1/4 NE 1/4

Sheet 4a of 11

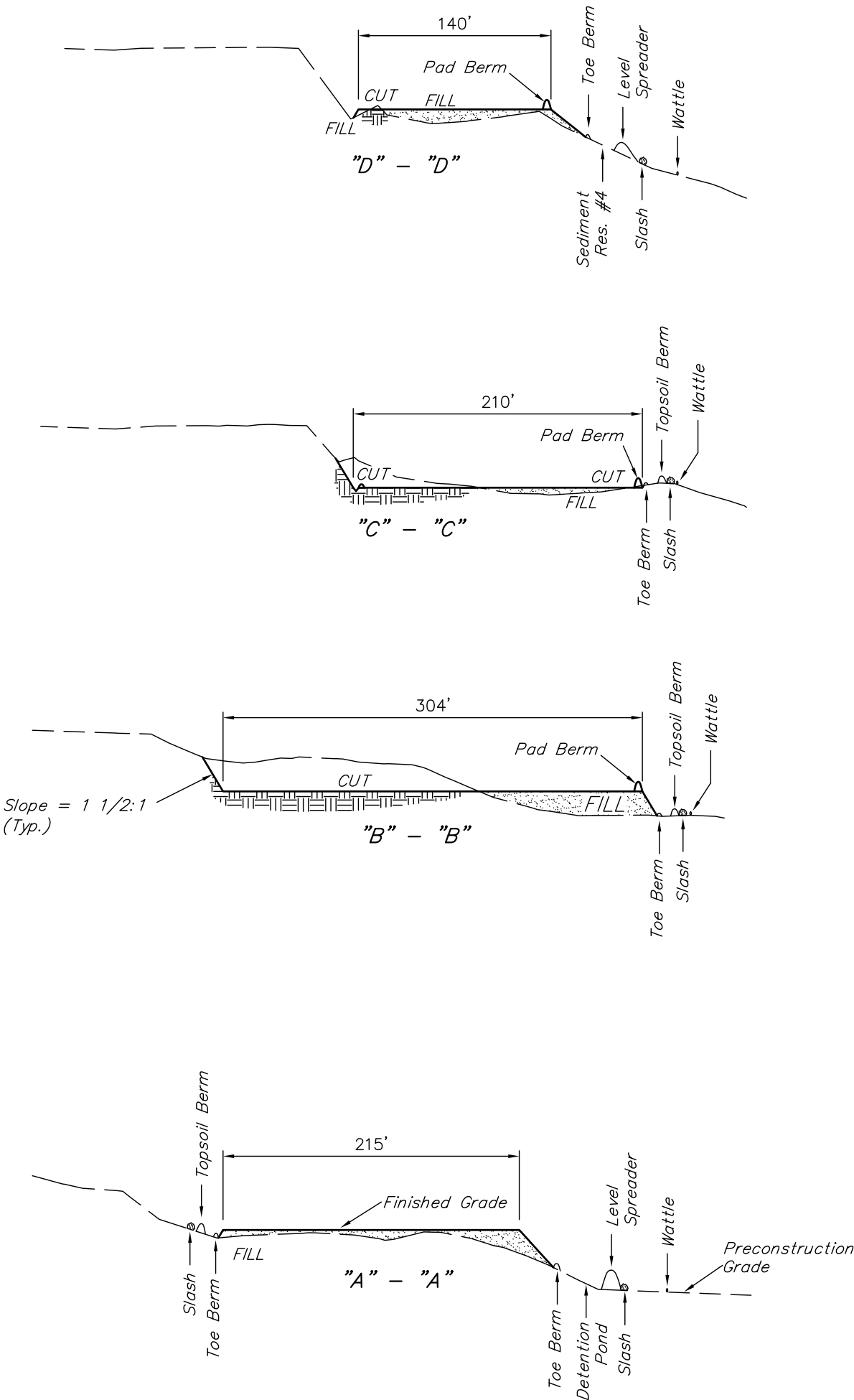
1" = 40'
X-Section
Scale
1" = 100'

DATE: 02-18-11
DRAWN BY: D.R.B.
Revised: 03-08-11 D.R.B.



NOTE:

Per NRCS U.S. Soil Survey for Rio Blanco County Area, CO. Site has Channery, Sandy Loam, and Unweathered Bedrock.



*NOTE:
USE EXCESS MATERIAL
FOR BERM AROUND PAD.

* NOTE:
FILL QUANTITY INCLUDES
5% FOR COMPACTION

APPROXIMATE YARDAGES FOR PROD. PAD

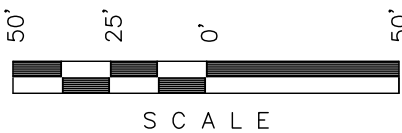
(6") Topsoil Stripping	=	1,370 Cu. Yds.
Remaining Location	=	4,980 Cu. Yds.
TOTAL CUT	=	6,350 CU.YDS.
FILL	=	4,980 CU.YDS.

EXCESS MATERIAL	=	1,370 Cu. Yds.
Topsoil	=	1,370 Cu. Yds.
EXCESS UNBALANCE (After Interim Rehabilitation)	=	0 Cu. Yds.

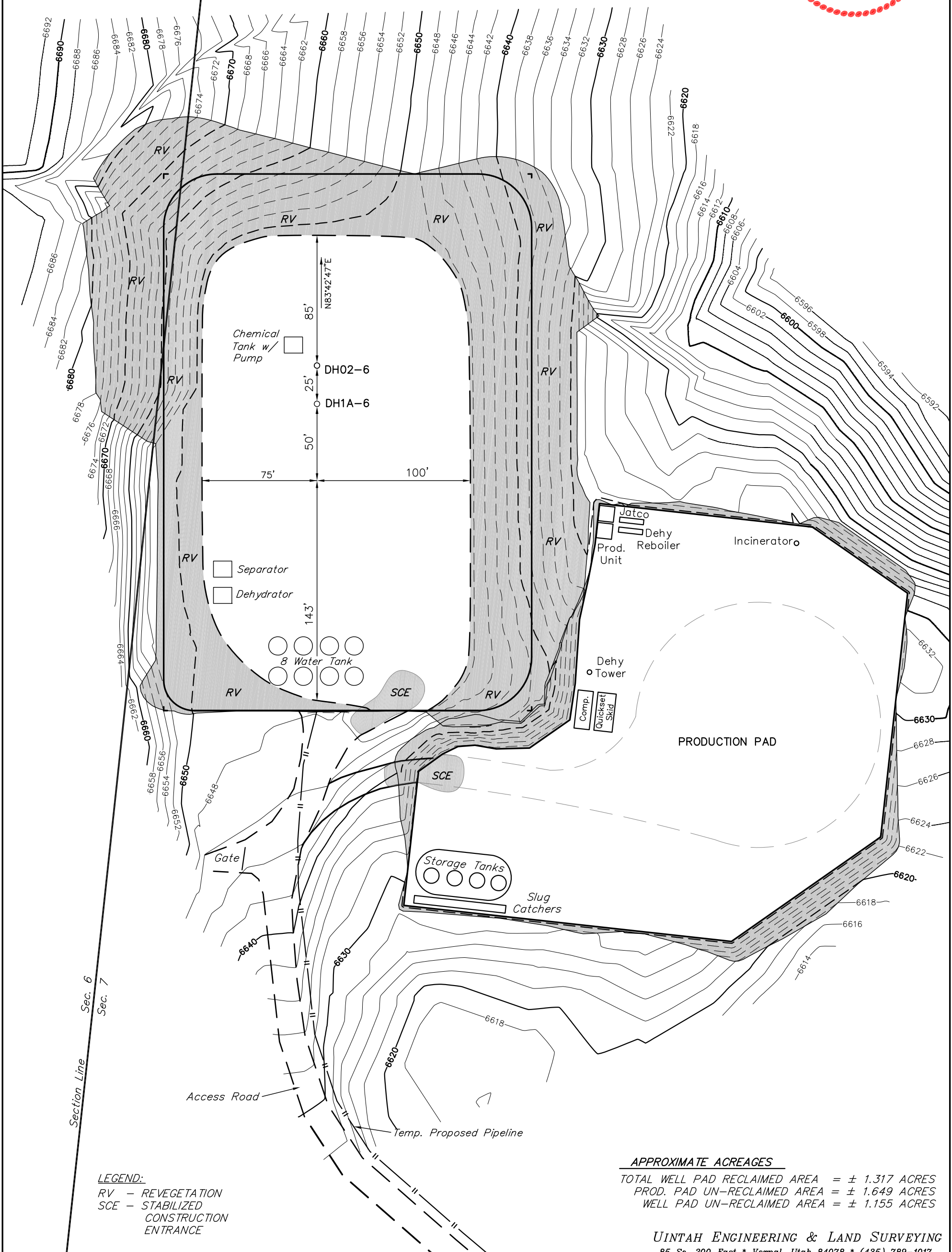
Encana OIL & GAS (USA) INC.
PRODUCTION SCHEMATIC FOR
KIMBALL MTN. B07 799 & PROD. PAD
SECTION 7, T7S, R99W, 6th P.M.
NW 1/4 NE 1/4

SCALE: 1" = 50'
DATE: 03-11-10
DRAWN BY: D.R.B.

Revised: 03-19-10 D.R.B.
Revised: 05-14-10 D.R.B.
Revised: 07-08-10 D.R.B.
Revised: 07-15-10 D.R.B.
Revised: 07-21-10 D.R.B.
Revised: 12-14-10 D.R.B.
Revised: 01-18-11 D.R.B.
Revised: 02-09-11 D.R.B.
Revised: 02-11-11 D.R.B.
Revised: 02-18-11 D.R.B.
Revised: 03-08-11 D.R.B.



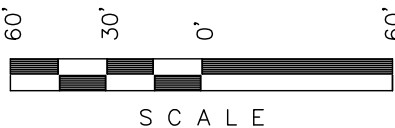
Sheet 6 of 11



LEGEND:
RV - REVEGETATION
SCE - STABILIZED
CONSTRUCTION
ENTRANCE

APPROXIMATE ACREAGES
TOTAL WELL PAD RECLAIMED AREA = ± 1.317 ACRES
PROD. PAD UN-RECLAIMED AREA = ± 1.649 ACRES
WELL PAD UN-RECLAIMED AREA = ± 1.155 ACRES

Encana OIL & GAS (USA) INC.
SURFACE DISTURBANCE AREA FOR
KIMBALL MTN. B07 799 & PROD. PAD
SECTION 7, T7S, R99W, 6th P.M.
NW 1/4 NE 1/4



SCALE

Sheet 7 of 11

SCALE: 1" = 60'
DATE: 03-11-10
DRAWN BY: D.R.B.
Revised: 05-14-10 D.R.B.
Revised: 07-08-10 D.R.B.
Revised: 07-15-10 D.R.B.
Revised: 07-21-10 D.R.B.
Revised: 08-03-10 D.R.B.
Revised: 12-14-10 D.R.B.
Revised: 01-10-11 D.R.B.
Revised: 01-18-11 D.R.B.
Revised: 02-09-11 D.R.B.
Revised: 02-11-11 D.R.B.
Revised: 02-18-11 D.R.B.
Revised: 03-08-11 D.R.B.

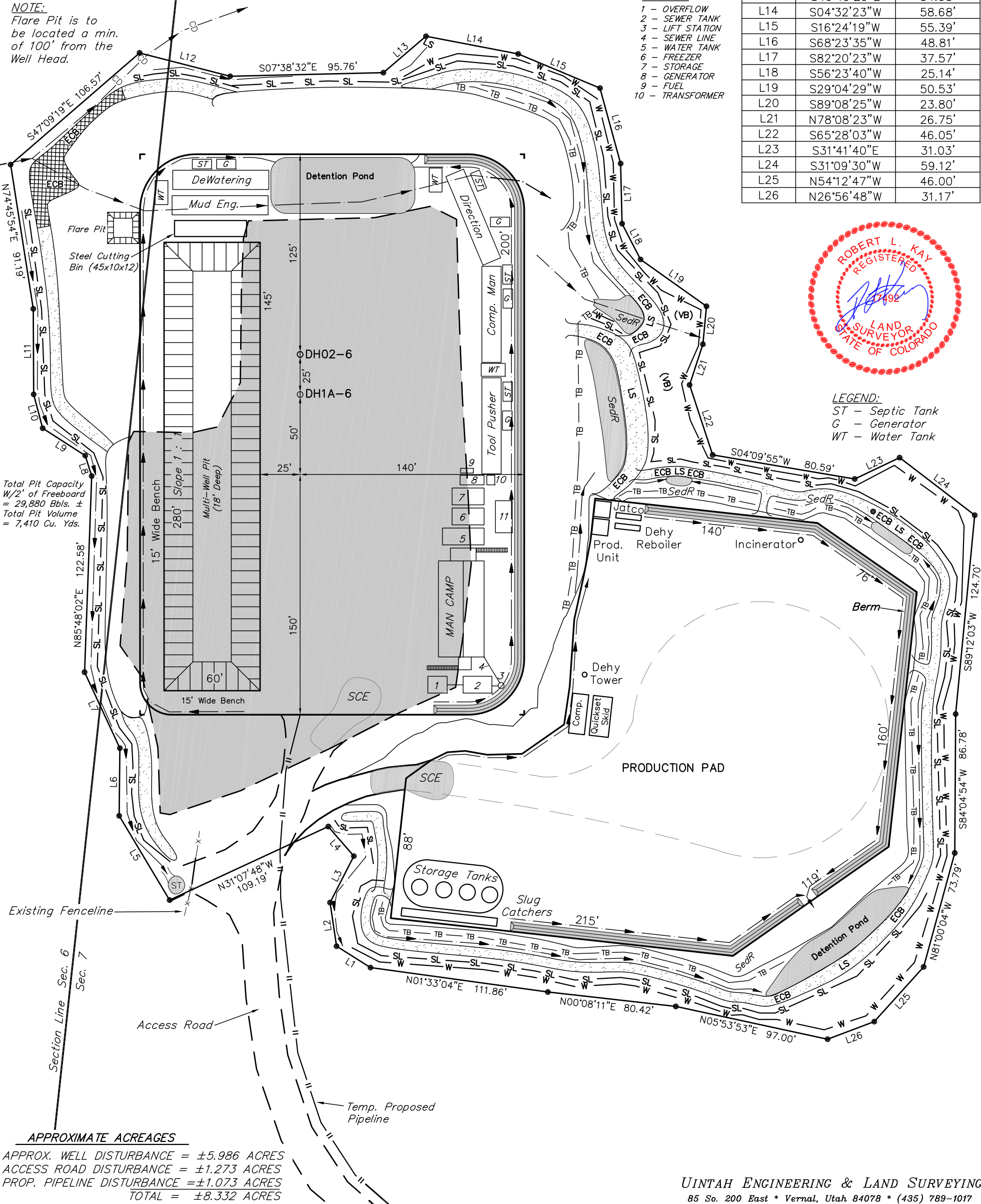
SWMP LEGEND:
CD - CHECK DAM
ECB - EROSION CONTROL
BLANKET
LS - LEVEL SPREADER
SCE - STABILIZED
CONSTRUCTION
ENTRANCE
RESERVOIR
SedR - SEDIMENT
RESERVOIR
SL - SLASH
ST - SEDIMENT TRAP
T - TERRACING
TB - TOE BERM
VB - VEGETATED BUFFER
W - WATTLE
ECB INFILLED
WITH FLEXTERRA

LEGEND:
1 - OVERFLOW
2 - SEWER TANK
3 - LIFT STATION
4 - SEWER LINE
5 - WATER TANK
6 - FREEZER
7 - STORAGE
8 - GENERATOR
9 - FUEL
10 - TRANSFORMER

LINE TABLE		
LINE	BEARING	LENGTH
L1	N25°57'33"E	25.07'
L2	N75°14'41"E	27.52'
L3	S69°10'19"E	32.60'
L4	N42°48'05"E	24.41'
L5	N52°48'00"E	61.35'
L6	N84°18'17"E	42.22'
L7	N58°46'55"E	52.34'
L8	N66°01'22"E	13.36'
L9	N26°28'29"E	31.59'
L10	N68°48'25"E	21.88'
L11	N83°28'06"E	53.43'
L12	S08°09'51"W	58.41'
L13	S46°49'29"E	34.95'
L14	S04°32'23"W	58.68'
L15	S16°24'19"W	55.39'
L16	S68°23'35"W	48.81'
L17	S82°20'23"W	37.57'
L18	S56°23'40"W	25.14'
L19	S29°04'29"W	50.53'
L20	S89°08'25"W	23.80'
L21	N78°08'23"W	26.75'
L22	S65°28'03"W	46.05'
L23	S31°41'40"E	31.03'
L24	S31°09'30"W	59.12'
L25	N54°12'47"W	46.00'
L26	N26°56'48"W	31.17'



LEGEND:
ST - Septic Tank
G - Generator
WT - Water Tank

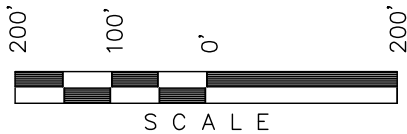


APPROXIMATE ACREAGES
APPROX. WELL DISTURBANCE = ±5.986 ACRES
ACCESS ROAD DISTURBANCE = ±1.273 ACRES
PROP. PIPELINE DISTURBANCE = ±1.073 ACRES
TOTAL = ±8.332 ACRES

Encana OIL & GAS (USA) INC.

LOCATION DRAWING FOR

KIMBALL MTN. B07 799 & PROD. PAD
SECTION 7, T7S, R99W, 6th P.M.
NW 1/4 NE 1/4



Sheet 7a of 11

SCALE: 1" = 200'
DATE: 03-17-10
DRAWN BY: D.R.B.

Revised: 03-19-10 D.R.B.
Revised: 05-14-10 D.R.B.
Revised: 07-08-10 D.R.B.
Revised: 07-15-10 D.R.B.
Revised: 07-21-10 D.R.B.
Revised: 08-03-10 D.R.B.
Revised: 12-14-10 D.R.B.
Revised: 01-10-11 D.R.B.
Revised: 02-09-11 D.R.B.
Revised: 02-11-11 D.R.B.
Revised: 02-18-11 D.R.B.
Revised: 03-08-11 D.R.B.



6

SW 1/4 SE 1/4

Encana Oil & Gas
(USA) INC.

WELL HEAD DH02-6
(NAD 83)
Latitude: 39.467803°
Longitude: 108.482083°

NE Cor Sec 7
1925 Brass Cap
1.1' High
Lat: 39.468097°
Long: 108.475381°

1925 Brass Cap
1.1' High, Pile of
Stones
Lat: 39.468072°
Long: 108.484728°

1/4 Section Line

7

NW 1/4 NE 1/4

Encana Oil & Gas
(USA) INC.

400' Offset
from edge of
Disturbance

1/16 Section Line

DISTURBANCE ACREAGE:
1.904 ± DRILLING OPERATIONS
1.155 ± INTERIM RECLAIM

CURRENT LAND USE

CROP LAND: ☐ IRRIGATED ☐ DRY LAND ☐ IMPROVED PASTURE ☐ HAY MEADOW ☐ CRP
NON-CROP LAND: ☒ RANGELAND ☐ TIMBER ☐ RECREATIONAL ☐ OTHER (Describe)
SUBDIVIDED: ☐ INDUSTRIAL ☐ COMMERCIAL ☐ RESIDENTIAL

FUTURE LAND USE

CROP LAND: ☐ IRRIGATED ☐ DRY LAND ☐ IMPROVED PASTURE ☐ HAY MEADOW ☐ CRP
NON-CROP LAND: ☒ RANGELAND ☐ TIMBER ☐ RECREATIONAL ☐ OTHER (Describe)
SUBDIVIDED: ☐ INDUSTRIAL ☐ COMMERCIAL ☐ RESIDENTIAL

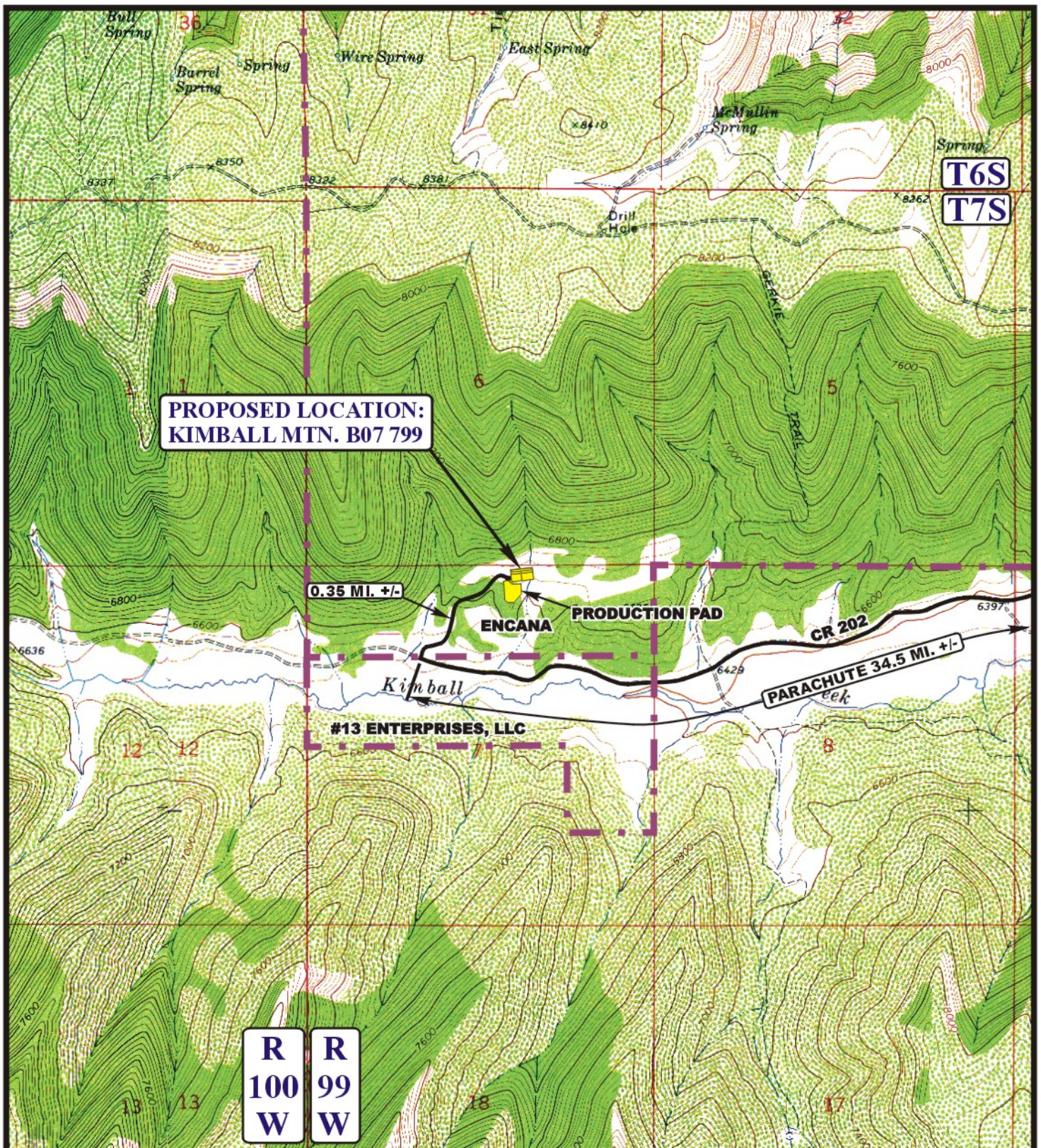
PLANT COMMUNITY

☐ DISTURBED GRASSLAND
☐ NATIVE GRASSLAND
☐ SHRUB LAND
☐ PLAINS RIPARIAN
☐ MOUNTAIN RIPARIAN
☒ FOREST LAND
☐ WETLANDS AQUATIC
☐ ALPINE
☐ OTHER (Describe):

Existing Features

(Distance from DH02-6)

Building	N10°W	15,182'
Public Road	S16°E	1,368'
Utility	S33°E	16,507'
Railroad	S55°E	90,300'
Property Line	S01°E	1,220'



LEGEND:

— EXISTING ROAD

Encana OIL & GAS (USA) INC.

KIMBALL MTN. B07 799

SECTION 7, T7S, R99W, 6th P.M.

NW 1/4 NE 1/4 SHEET 9 of 11



Uintah Engineering & Land Surveying
 85 South 200 East Vernal, Utah 84078
 (435) 789-1017 * FAX (435) 789-1813



**TOPOGRAPHIC
MAP**

03 12 10
 MONTH DAY YEAR

SCALE: 1" = 2000' DRAWN BY: J.L.G. REVISED: 03-08-11

**B
TOPO**