

---

**NOBLE ENERGY INC E-BUSINESS**

---

**FEDERAL 8-11D  
PICEANCE  
Garfield County , Colorado**

**Cement Surface Casing  
01-Sep-2010**

**Post Job Report**

### The Road to Excellence Starts with Safety

Sold To #: 345242	Ship To #: 2804065	Quote #:	Sales Order #: 7608688
Customer: NOBLE ENERGY INC E-BUSINESS		Customer Rep: Neilson, Dave	
Well Name: FEDERAL		Well #: 8-11D	API/UWI #: 05-045-19134
Field: PICEANCE	City (SAP): PARACHUTE	County/Parish: Garfield	State: Colorado
Lat: N 39.382 deg. OR N 39 deg. 22 min. 54.188 secs.		Long: W 108.026 deg. OR W -109 deg. 58 min. 25.99 secs.	
Contractor: H&P 322		Rig/Platform Name/Num: H&P 322	
Job Purpose: Cement Surface Casing			
Well Type: Development Well		Job Type: Cement Surface Casing	
Sales Person: METLI, MARSHALL	Srvc Supervisor: LEIST, JAMES		MBU ID Emp #: 362787

### Job Personnel

HES Emp Name	Exp Hrs	Emp #	HES Emp Name	Exp Hrs	Emp #	HES Emp Name	Exp Hrs	Emp #
DANIEL, EVERETT Dean	4	337325	HOEFER, FREEMAN Dennis	4	369666	LEIST, JAMES R	4	362787
ramsey, stan	4	477609	SALAZAR, PAUL Omar	4	445614			

### Equipment

HES Unit #	Distance-1 way	HES Unit #	Distance-1 way	HES Unit #	Distance-1 way	HES Unit #	Distance-1 way
10001431	60 mile	10296152C	60 mile	10533645	60 mile	10724643	60 mile
10897797	60 mile	11139328	60 mile	11259882	60 mile		

### Job Hours

Date	On Location Hours	Operating Hours	Date	On Location Hours	Operating Hours	Date	On Location Hours	Operating Hours
8/31/10	1.5	1.5	9/1/10	2.5	2.5			
<b>TOTAL</b>	<b>4</b>	<b>4</b>	<i>Total is the sum of each column separately</i>					

### Job

Formation Name	Formation Depth (MD)	Top	Bottom	Form Type	Job depth MD	Water Depth	Perforation Depth (MD)	From	To
				BHST	1554. ft				
					Job Depth TVD	1554. ft			
					Wk Ht Above Floor	3. ft			

### Well Data

Description	New / Used	Max pressure psig	Size in	ID in	Weight lbm/ft	Thread	Grade	Top MD ft	Bottom MD ft	Top TVD ft	Bottom TVD ft
-------------	------------	-------------------	---------	-------	---------------	--------	-------	-----------	--------------	------------	---------------

### Sales/Rental/3<sup>rd</sup> Party (HES)

Description	Qty	Qty uom	Depth	Supplier
PLUG,CMTG,TOP,8 5/8,HWE,7.20 MIN/8.09 MA	1	EA		
ADC (AUTO DENSITY CTRL) SYS, /JOB,ZI	1	JOB		
PORT. DAS W/CEMWIN;ACQUIRE W/HES, ZI	1	JOB		
R/A DENSOMETER W/CHART RECORDER,/JOB,ZI	1	JOB		

### Tools and Accessories

Type	Size	Qty	Make	Depth	Type	Size	Qty	Make	Depth	Type	Size	Qty	Make
Guide Shoe					Packer					Top Plug			
Float Shoe					Bridge Plug					Bottom Plug			
Float Collar					Retainer					SSR plug set			
Insert Float										Plug Container			
Stage Tool										Centralizers			

### Miscellaneous Materials

Gelling Agt	Conc	Surfactant	Conc	Acid Type	Qty	Conc	%
Treatment Fld	Conc	Inhibitor	Conc	Sand Type	Size	Qty	

Fluid Data									
Stage/Plug #: 1									
Fluid #	Stage Type	Fluid Name	Qty	Qty uom	Mixing Density lbm/gal	Yield ft <sup>3</sup> /sk	Mix Fluid Gal/sk	Rate bbl/min	Total Mix Fluid Gal/sk
1	WATER SPACER		20	bbl	8.33	.0	.0	.0	
2	Lead Cement	VERSACEM (TM) SYSTEM (452010)	220	sacks	12.3	2.38	13.75		13.75
	13.75 Gal	FRESH WATER							
3	Tail Cement	VERSACEM (TM) SYSTEM (452010)	130	sacks	12.8	2.11	11.75		11.75
	11.75 Gal	FRESH WATER							
4	DISPLACEMENT		94.3	bbl	8.33	.0	.0	.0	
Calculated Values		Pressures		Volumes					
Displacement	94.3	Shut In: Instant		Lost Returns		Cement Slurry	142	Pad	
Top Of Cement	Surface	5 Min		Cement Returns	22	Actual Displacement	94.3	Treatment	
Frac Gradient		15 Min		Spacers	20	Load and Breakdown		Total Job	
Rates									
Circulating	6	Mixing	6	Displacement	8	Avg. Job	7		
Cement Left In Pipe	Amount	42.07 ft	Reason	Shoe Joint					
Frac Ring # 1 @	ID	Frac ring # 2 @	ID	Frac Ring # 3 @	ID	Frac Ring # 4 @	ID		
The Information Stated Herein Is Correct				Customer Representative Signature					

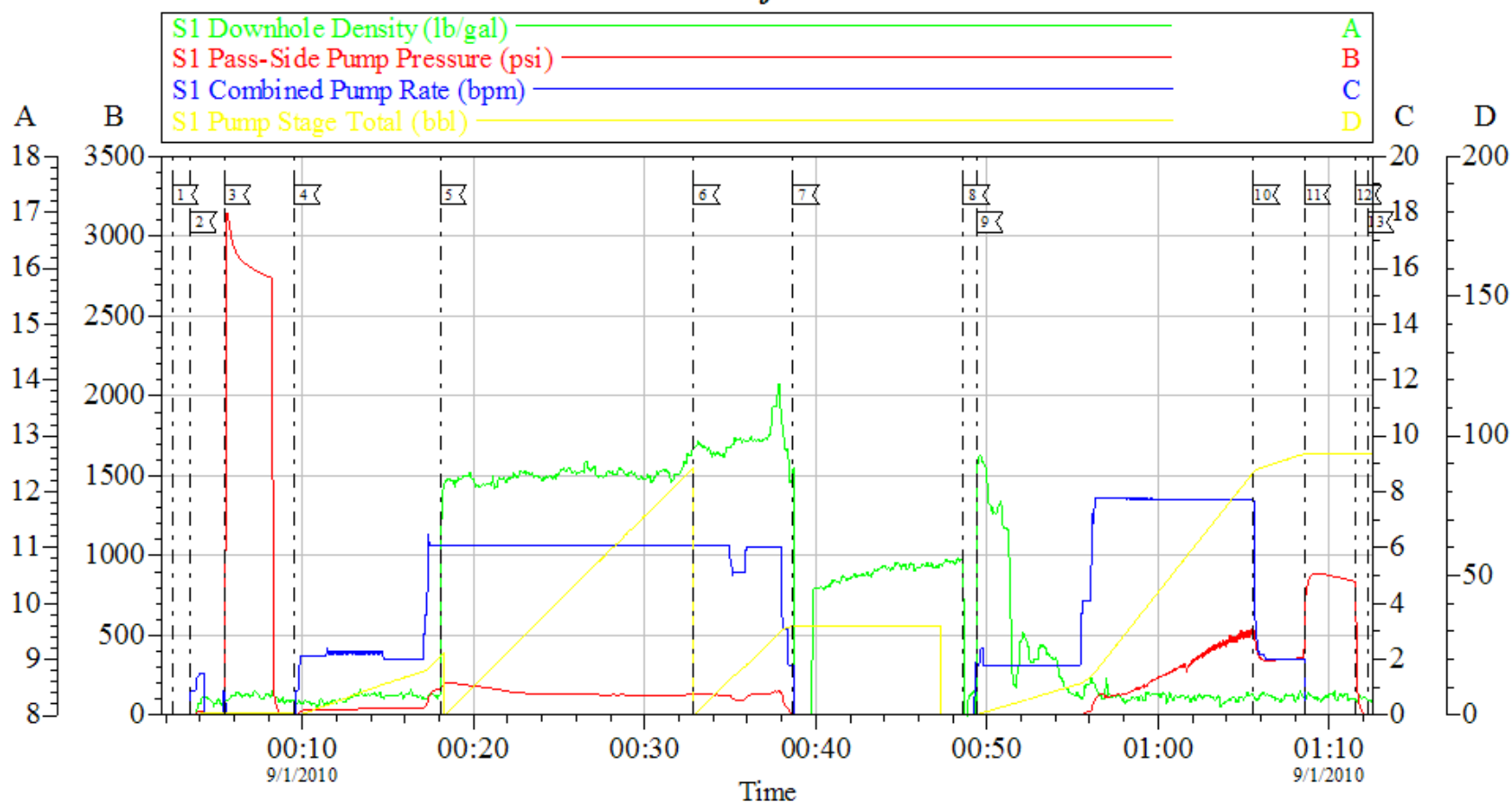
*The Road to Excellence Starts with Safety*

<b>Sold To #:</b> 345242	<b>Ship To #:</b> 2804065	<b>Quote #:</b>	<b>Sales Order #:</b> 7608688
<b>Customer:</b> NOBLE ENERGY INC E-BUSINESS		<b>Customer Rep:</b> Neilson, Dave	
<b>Well Name:</b> FEDERAL	<b>Well #:</b> 8-11D	<b>API/UWI #:</b> 05-045-19134	
<b>Field:</b> PICEANCE	<b>City (SAP):</b> PARACHUTE	<b>County/Parish:</b> Garfield	<b>State:</b> Colorado
<b>Legal Description:</b>			
<b>Lat:</b> N 39.382 deg. OR N 39 deg. 22 min. 54.188 secs.		<b>Long:</b> W 108.026 deg. OR W -109 deg. 58 min. 25.99 secs.	
<b>Contractor:</b> H&P 322		<b>Rig/Platform Name/Num:</b> H&P 322	
<b>Job Purpose:</b> Cement Surface Casing			<b>Ticket Amount:</b>
<b>Well Type:</b> Development Well		<b>Job Type:</b> Cement Surface Casing	
<b>Sales Person:</b> METLI, MARSHALL		<b>Srvc Supervisor:</b> LEIST, JAMES	<b>MBU ID Emp #:</b> 362787

Activity Description	Date/Time	Cht #	Rate bbl/min	Volume bbl		Pressure psig		Comments
				Stage	Total	Tubing	Casing	
Call Out	08/31/2010 18:00							
Pre-Convoy Safety Meeting	08/31/2010 20:00							WITH ALL HES PERSONNEL
Crew Leave Yard	08/31/2010 20:30							
Arrive At Loc	08/31/2010 22:15							
Assessment Of Location Safety Meeting	08/31/2010 22:20							WITH ALL HES PERSONNEL
Pre-Rig Up Safety Meeting	08/31/2010 22:30							WITH ALL HES PERSONNEL
Rig-Up Completed	08/31/2010 23:00							
Pre-Job Safety Meeting	08/31/2010 23:30							WITH ALL ON LOCATION PERSONNEL
Start Job	09/01/2010 00:02							GOOD CIRULATION THROUGHOUT JOB, NO PIPE MOVEMENT DURING JOB
Pressure Test	09/01/2010 00:05		0.5	0.1			2300.0	
Pump Spacer 1	09/01/2010 00:09		6	20			140.0	FRESH WATER
Pump Lead Cement	09/01/2010 00:18		6	93.2			186.0	
Pump Tail Cement	09/01/2010 00:32		6	48.8			132.0	
Shutdown	09/01/2010 00:38							
Drop Top Plug	09/01/2010 00:48							AWAY
Pump Displacement	09/01/2010 00:49		8	94.3			540.0	FRESH WATER

Activity Description	Date/Time	Cht #	Rate bbl/ min	Volume bbl		Pressure psig		Comments
				Stage	Total	Tubing	Casing	
Slow Rate	09/01/2010 01:05		2	73			350.0	TO BUMP PLUG
Bump Plug	09/01/2010 01:08		2	94.3			850.0	PLUG BUMPED, 22 BBLs of Cement to Surface
Check Floats	09/01/2010 01:11							THE FLOATS ARE HOLDING
End Job	09/01/2010 01:12							
Pre-Rig Down Safety Meeting	09/01/2010 01:15							WITH ALL HES PERSONNEL
Rig-Down Completed	09/01/2010 02:00							
Pre-Convoy Safety Meeting	09/01/2010 02:15							WITH ALL HES PERSONNEL
Crew Leave Location	09/01/2010 02:30							
Comment	09/01/2010 02:30							THANKYOU FOR USING HALLIBURTON CEMENT, JAMES LEIST AND CREW

# NOBLE Surface



Local Event Log			
1	Start Job	00:02:23	2
2	Prime Lines	00:03:26	3
3	Test Lines	00:05:26	4
4	Pump H2O Spacer	00:09:31	5
5	Pump Lead Cement	00:18:03	6
6	Pump Tail Cement	00:32:52	7
7	Shut Down	00:38:40	8
8	Drop Top Plug	00:48:37	9
9	Pump H2O Displacement	00:49:23	10
10	Slow Rate	01:05:35	11
11	Bump Plug	01:08:33	12
12	Check Floats	01:11:32	13
13	End Job	01:12:14	

Customer: Noble	Job Date: 31-Aug-2010	Sales Order #: 7608688
Well Description: Fed. 8-11D	Job Type: Surface	ADC Used: Yes
Company Rep: Charles Collier	Cement Supervisor: Dean Daniel	Elite #: 9/Paul Salazar

HALLIBURTON  
OptiCem v6.3.4  
01-Sep-10 01:20