

Invoice Mailing Address: ENCANA USA - PARACHUTE FIELD OFC 2717 COUNTY RD 215, SUITE 100 PARACHUTE 81635 USA		Left District	Date: 26-May-2010	Time: 5:00 AM
		Arrive Location	Date: 26-May-2010	Time: 11:00 AM
		Start Job	Date: 26-May-2010	Time: 11:01 AM
		Complete Job	Date: 26-May-2010	Time: 1:00 PM
		Leave Location	Date: 26-May-2010	Time: 2:00 PM
		Arrived District	Date: 26-May-2010	Time: 4:00 PM
		Service Description		Cementing Remedial, Remedial Squeeze
Customer PO	Contract	Well Name & Number FEDERAL 26-W	Field HIGH MESA	
AFE	Cust Ref	County/Parish/Block/Borough	State/Province COLORADO	
Customer or Authorized Representative Dan Hacker		SLB Location Grand Junction, CO	Legal Location	
API/UWI		Pricebook WSV_GEOREF_USL_2006_USD_2006_SE P_OCT	Rig	
Service Instructions: Perform remedial treatment as per Co.Man directions. Mixing and pumping required amount of 15.8ppg G Neat slurry. Pumped 10bbs 15.8ppg Neat G Displaced with 8bbls Water. ABT is loaded with 360sks of G neat. G Neat Yield = 1.17cuFt/sk. Test water on location. Make sure there is enough water for treatment, wash up, displacement and safety. Take 2" regular. Take 2 3/8" 8 round swedge.				

THE ESTIMATED CHARGES AND DATA SHOWN BELOW ARE SUBJECT TO CORRECTION BY SCHLUMBERGER

Item	Description	Qty	UOM	Price	Disc	Amount
Products						
D907	Cement, Class G	48	CF			
57998000	Sugar	1	EA			
Services						
49100000	Cement Blending Charge	48	CF			
48600000	Tool Casing Swivel Rental	1	JOB			
59200002	Transportation, Mileage Heavy Vehicles	300	MI			
59200005	Transportation, Mileage Light Vehicles	150	MI			
49102000	Transportation, Cement Ton-mile	171	MI			
107264001	Regulatory Conformance Charge	2	EA			
59697004	CemCAT Monitoring System	1	JOB			
58498000	Taxes	1	EA			
102872020	Pump, Liner/Sqz/Plug 0-2000 ft	1	EA			
48019000	Bulk Unit, Cement Add Hr	2	HR			

Total (Before Discount):**Discount:****Special Discount:****Estimated Discounted Total (USD):**

THE ESTIMATED CHARGES AND DATA SHOWN ABOVE ARE SUBJECT TO CORRECTION BY SCHLUMBERGER.

THE SERVICES, EQUIPMENT, MATERIALS AND/OR PRODUCTS PROVIDED BY THIS SERVICE CONTRACT RECEIPT HAVE BEEN PERFORMED OR RECEIVED AS SET FORTH ABOVE.

Signature of Customer or Authorized Representative:

Validity unknown

Signed by Dan Hacker
5/26/2010
13:35:56

Dan Hacker

Date

Signature of Schlumberger Representative:

Validity unknown

Signed by Nikole Strickler
5/26/2010
13:35:56

Nikole Strickler

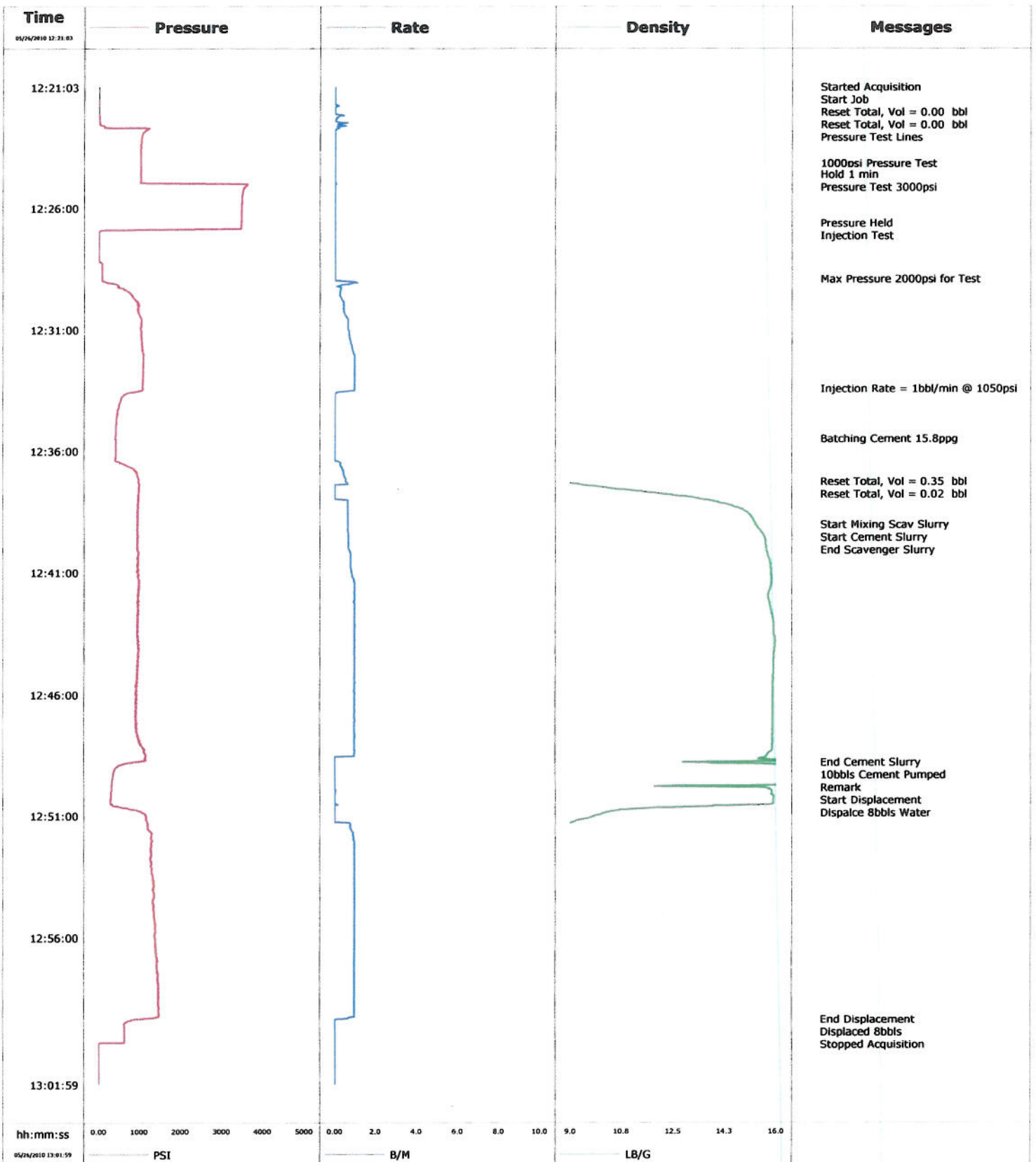
Date

Date Printed: 5/26/2010 1:35:08 PM

Page 1 of 1

This document is Confidential and intended for authorized users only

Well	FEDERAL 29-6W PF29	Client	ENCANA
Field	HIGH MESA	SIR No.	
Engineer		Job Type	
Country	United States	Job Date	05-26-2010



05/26/2010 13:11:22

				Customer ENCANA		Job Number BAD4-00086	
Well FEDERAL 29-6W PF29			Location (legal) GRAND JUNCTION		Schlumberger Location		Job Start May/26/2010
Field HIGH MESA		Formation Name/Type		Deviation	Bit Size	Well MD	Well TVD
County GARFIELD		State/Province CO		BHP	BHST	BHCT	Pore Press. Gradient
Well Master 0630742398		API/UWI					
Rig Name GAS		Drilled For	Service Via	Casing/Liner			
Offshore Zone		Well Class OLD	Well Type GAS	Depth,	Size,	Weight,	Grade Thread
Drilling Fluid Type		Max. Density	Plastic Viscosity	Tubing/Drill Pipe			
Service Line Cementing		Job Type Plug & Abandon		Depth,	Size,	Weight,	Grade Thread
Max. Allowed Tub. Press		Max. Allowed Ann. Press	WH Connection	Perforations/Open Hole			
Service Instructions				Top,	Bottom,	No. of Shots	Total Interval
				Diameter			
				Treat Down	Displacement	Packer Type	Packer Depth
				Tubing Vol.	Casing Vol.	Annular Vol.	Openhole Vol.
Casing/Tubing Secured		<input type="checkbox"/> 1 Hole Vol. Circulated prior to Cement <input type="checkbox"/>		Casing Tools		Squeeze Job	
Lift Pressure				Shoe Type		Squeeze Type	
Pipe Rotated		<input type="checkbox"/> Pipe Reciprocated <input type="checkbox"/>		Shoe Depth		Tool Type	
No. Centralizers		Top Plugs	Bottom Plugs	Stage Tool Type		Tool Depth	
Cement Head Type				Stage Tool Depth		Tail Pipe Size	
Job Scheduled For May/26/2010		Arrived on Location May/26/2010		Leave Location May/26/2010		Collar Type	
						Tail Pipe Depth	
						Sqr. Total Vol.	
Date	Time 24-hr clock	Trusting Pressure PSI	Flow Rate B/M	Density LB/G	Volume BBL	Message	
05/26/2010	12:21:03					Started Acquisition	
05/26/2010	12:21:03	13	0.0	8.35	0.0		
05/26/2010	12:21:06					Start Job	
05/26/2010	12:21:06	12	0.0	8.35	0.0		
05/26/2010	12:21:09					Reset Total, Vol = 0.00 bbl	
05/26/2010	12:21:09	12	0.0	8.35	0.0		
05/26/2010	12:21:10					Reset Total, Vol = 0.00 bbl	
05/26/2010	12:21:10	12	0.0	8.35	0.0		
05/26/2010	12:21:14					Pressure Test Lines	
05/26/2010	12:21:14	12	0.0	8.35	0.0		
05/26/2010	12:21:33	10	0.0	8.35	0.0		
05/26/2010	12:22:03	7	0.0	8.35	0.0		
05/26/2010	12:22:33	35	0.5	8.35	0.1		
05/26/2010	12:23:03	1063	0.0	8.35	0.1		
05/26/2010	12:23:33	1037	0.0	8.35	0.1		
05/26/2010	12:24:03	1031	0.0	8.35	0.1		
05/26/2010	12:24:12					1000psi Pressure Test	
05/26/2010	12:24:12	1029	0.0	8.35	0.1		
05/26/2010	12:24:33	1030	0.0	8.35	0.1		
05/26/2010	12:24:39					Hold 1 min	
05/26/2010	12:24:39	1026	0.0	8.35	0.1		

Date	Time 24-hr clock	Treating Pressure PSI	Flow Rate B/M	Density LB/G	Volume BBL	Message
05/26/2010	12:25:04					Pressure Test 3000psi
05/26/2010	12:25:04	3622	0.0	8.35	0.1	
05/26/2010	12:25:33	3501	0.0	8.35	0.1	
05/26/2010	12:26:03	3486	0.0	8.35	0.1	
05/26/2010	12:26:33	3484	0.0	8.35	0.2	
05/26/2010	12:26:39					Pressure Held
05/26/2010	12:26:39	3481	0.0	8.35	0.2	
05/26/2010	12:26:55					Injection Test
05/26/2010	12:26:55	1842	0.0	8.35	0.2	
05/26/2010	12:27:03	6	0.0	8.35	0.2	
05/26/2010	12:27:33	7	0.0	8.35	0.2	
05/26/2010	12:28:03	8	0.0	8.35	0.2	
05/26/2010	12:28:33	81	0.0	8.35	0.2	
05/26/2010	12:28:58					Max Pressure 2000psi for Test
05/26/2010	12:28:58	84	0.0	8.35	0.2	
05/26/2010	12:29:03	120	0.5	8.35	0.2	
05/26/2010	12:29:33	785	0.3	8.35	0.4	
05/26/2010	12:30:03	953	0.4	8.35	0.6	
05/26/2010	12:30:33	1027	0.6	8.35	0.8	
05/26/2010	12:31:03	1038	0.7	8.35	1.1	
05/26/2010	12:31:33	1056	0.8	8.35	1.5	
05/26/2010	12:32:03	1103	1.0	8.35	1.9	
05/26/2010	12:32:33	1091	1.0	8.35	2.4	
05/26/2010	12:33:03	1081	1.0	8.35	2.9	
05/26/2010	12:33:28					Injection Rate = 1bbl/min @ 1050psi
05/26/2010	12:33:28	1071	1.0	8.35	3.3	
05/26/2010	12:33:33	975	0.8	8.35	3.4	
05/26/2010	12:34:03	513	0.0	8.35	3.4	
05/26/2010	12:34:33	449	0.0	8.35	3.4	
05/26/2010	12:35:03	427	0.0	8.35	3.4	
05/26/2010	12:35:31					Batching Cement 15.8ppg
05/26/2010	12:35:31	415	0.0	8.35	3.4	
05/26/2010	12:35:33	429	0.0	8.35	3.4	
05/26/2010	12:36:03	421	0.0	8.35	3.4	
05/26/2010	12:36:33	630	0.3	8.35	3.4	
05/26/2010	12:37:03	946	0.5	8.38	3.6	
05/26/2010	12:37:17					Reset Total, Vol = 0.35 bbl
05/26/2010	12:37:17	978	0.5	8.81	3.8	
05/26/2010	12:37:19					Reset Total, Vol = 0.02 bbl
05/26/2010	12:37:19	984	0.6	8.91	3.8	
05/26/2010	12:37:33	978	0.0	10.26	3.8	
05/26/2010	12:38:03	974	0.6	13.65	3.8	
05/26/2010	12:38:33	964	0.6	15.01	4.2	
05/26/2010	12:39:03					Start Mixing Scav Slurry
05/26/2010	12:39:03	963	0.6	15.30	4.5	
05/26/2010	12:39:33	946	0.7	15.60	4.8	
05/26/2010	12:39:34					Start Cement Slurry
05/26/2010	12:39:34	960	0.7	15.60	4.8	
05/26/2010	12:39:39					End Scavenger Slurry
05/26/2010	12:39:39	943	0.7	15.62	4.9	
05/26/2010	12:40:03	942	0.7	15.66	5.1	
05/26/2010	12:40:33	958	0.8	15.77	5.5	
05/26/2010	12:41:03	973	0.8	15.81	5.9	
05/26/2010	12:41:33	985	1.0	15.81	6.4	

DATE	TIME 24-hr clock	Pressure PSI	Flow Rate B/M	Density LB/G	Volume BSL	Message
05/26/2010	12:42:33	975	1.0	15.82	7.4	
05/26/2010	12:43:03	966	1.0	15.91	7.8	
05/26/2010	12:43:33	943	1.0	15.93	8.3	
05/26/2010	12:44:03	974	1.0	15.95	8.8	
05/26/2010	12:44:33	964	1.0	15.91	9.3	
05/26/2010	12:45:03	943	1.0	15.90	9.8	
05/26/2010	12:45:33	927	1.0	15.89	10.3	
05/26/2010	12:46:03	912	1.0	15.88	10.8	
05/26/2010	12:46:33	923	1.0	15.88	11.3	
05/26/2010	12:47:03	902	1.0	15.88	11.8	
05/26/2010	12:47:33	948	1.0	15.88	12.3	
05/26/2010	12:48:03	1038	1.0	15.87	12.8	
05/26/2010	12:48:33	1157	1.0	15.69	13.3	
05/26/2010	12:48:50					End Cement Slurry
05/26/2010	12:48:50	728	0.0	12.89	13.3	
05/26/2010	12:49:03	416	0.0	16.45	13.3	
05/26/2010	12:49:11					10bbls Cement Pumped
05/26/2010	12:49:11	379	0.0	16.43	13.3	
05/26/2010	12:49:12					Remark
05/26/2010	12:49:12	377	0.0	16.42	13.3	
05/26/2010	12:49:31					Start Displacement
05/26/2010	12:49:31	342	0.0	16.37	13.3	
05/26/2010	12:49:32					Displace 8bbls Water
05/26/2010	12:49:32	340	0.0	16.37	13.3	
05/26/2010	12:49:33	340	0.0	16.37	13.3	
05/26/2010	12:50:03	313	0.0	15.85	13.3	
05/26/2010	12:50:33	335	0.1	15.89	13.3	
05/26/2010	12:51:03	1172	0.0	9.79	13.3	
05/26/2010	12:51:33	1211	0.8	8.74	13.5	
05/26/2010	12:52:03	1308	1.0	8.56	13.9	
05/26/2010	12:52:33	1283	1.0	8.47	14.4	
05/26/2010	12:53:03	1291	1.0	8.41	14.9	
05/26/2010	12:53:33	1323	1.0	8.38	15.4	
05/26/2010	12:54:03	1343	1.0	8.38	15.9	
05/26/2010	12:54:33	1318	1.0	8.36	16.4	
05/26/2010	12:55:03	1350	1.0	8.36	16.9	
05/26/2010	12:55:33	1381	1.0	8.36	17.4	
05/26/2010	12:56:03	1396	1.0	8.37	17.9	
05/26/2010	12:56:33	1414	1.0	8.36	18.3	
05/26/2010	12:57:03	1437	1.0	8.36	18.8	
05/26/2010	12:57:33	1451	1.0	8.35	19.3	
05/26/2010	12:58:03	1472	1.0	8.36	19.8	
05/26/2010	12:58:33	1472	1.0	8.35	20.3	
05/26/2010	12:59:03	1478	1.0	8.35	20.8	
05/26/2010	12:59:21					End Displacement
05/26/2010	12:59:21	852	0.1	8.36	21.0	
05/26/2010	12:59:22					Displaced 8bbls
05/26/2010	12:59:22	807	0.0	8.36	21.0	
05/26/2010	12:59:33	631	0.0	8.36	21.0	
05/26/2010	13:00:03	641	0.0	8.36	21.0	
05/26/2010	13:00:33	3	0.0	8.36	21.0	
05/26/2010	13:01:03	3	0.0	8.36	21.0	
05/26/2010	13:01:33	4	0.0	8.36	21.0	

Alt. 10188025

FIELD RECEIPT NO. 1001625285

BJ Services Company

137

CUSTOMER		ENCANA Oil & Gas USA Inc		CREDIT APPROVAL NO. A10011242226		PURCHASE ORDER NO.		CUSTOMER NUMBER 20023075 - 00201580		INVOICE NUMBER			
MAIL INVOICE TO		STREET OR BOX NUMBER 370 17th Street Suite 1700		CITY Denver		STATE Colorado		ZIP CODE 80202					
DATE WORK COMPLETED		MO. 05	DAY 28	YEAR 2010	BJ SERVICES REPRESENTATIVE JOSE E CARCAMO		WELL API NO: 05045113340000		WELL TYPE: Old Well				
BJ SERVICES DISTRICT		Grand Junction			JOB DEPTH(ft) 638		WELL CLASS: Gas						
WELL NAME AND NUMBER		FEDERAL #29-6W PF29			TD WELL DEPTH(ft) 638		GAS USED ON JOB: No Gas						
WELL LOCATION :		LEGAL DESCRIPTION 29-7S-95W		COUNTY/PARISH Garfield		STATE Colorado		JOB TYPE CODE: Plug & Abandon					
PRODUCT CODE		DESCRIPTION		UNIT OF MEASURE		QUANTITY		LIST PRICE UNIT		GROSS AMOUNT		% DISC.	NET AMOUNT
100021	Class G Cement			sacks	30								
424509	FP-13L			gals	0.5								
499680	Static Free			lbs	1.2								
		SUB-TOTAL FOR Product Material											
A152	Personnel Surcharge - Cement Svc			ea	1								
M100	Bulk Materials Service Charge			cu ft	104								
R798	Automatic Density System			job	1								
		SUB-TOTAL FOR Service Charges											
F038	Cement Pump Casing, Additional Hrs			hrs	2								
F057A	Cement Pump Tubing, 2001 - 3000 ft			4hrs	1								
J225	Data Acquisition, Cement, Standard			job	1								
J390	Mileage, Heavy Vehicle			miles	100								
J391	Mileage, Auto, Pick-Up or Treating Van			miles	100								
		SUB-TOTAL FOR Equipment											
SERVICE ORDER: I AUTHORIZE WORK TO BEGIN PER SERVICE INSTRUCTIONS IN ACCORDANCE WITH THE TERMS AND CONDITIONS PRINTED ON THE LAST PAGE OF THIS FORM AND REPRESENT THAT I HAVE AUTHORITY TO ACCEPT AND SIGN THIS ORDER.													
ARRIVE LOCATION : MO. 05 DAY 28 YEAR 2010 TIME 08:40													
CUSTOMER REP. DAN													
SEE LAST PAGE FOR GENERAL TERMS AND CONDITIONS		CUSTOMER AUTHORIZED AGENT											
		X BJ SERVICES APPROVED											
		X CUSTOMER AUTHORIZED AGENT											
		SERVICE RECEIPT: I CERTIFY THAT THE MATERIALS AND SERVICES LISTED WERE RECEIVED AND ALL SERVICES PERFORMED IN A WORKMANLIKE MANNER.											

BJ Services Company

CUSTOMER		EnCana Oil & Gas USA Inc		CREDIT APPROVAL NO. A10011242226		PURCHASE ORDER NO.		CUSTOMER NUMBER 20023075 - 00201580		INVOICE NUMBER	
MAIL INVOICE TO		STREET OR BOX NUMBER 370 17th Street Suite 1700		CITY Denver		STATE Colorado		ZIP CODE 80202			
DATE WORK COMPLETED		MO. 05 DAY 28 YEAR 2010		BJ SERVICES REPRESENTATIVE JOSE E CARCAMO		WELL API NO: 05045113340000		WELL TYPE: Old Well			
BJ SERVICES DISTRICT Grand Junction						JOB DEPTH(ft) 638		WELL CLASS: Gas			
WELL NAME AND NUMBER FEDERAL #29-6W PF29						TD WELL DEPTH(ft) 638		GAS USED ON JOB: No Gas			
WELL LOCATION:		LEGAL DESCRIPTION 29-7S-95W		COUNTY/PARISH Garfield		STATE Colorado		JOB TYPE CODE: Plug & Abandon			
PRODUCT CODE		DESCRIPTION		UNIT OF MEASURE		QUANTITY		LIST PRICE UNIT		GROSS AMOUNT	
J401		Bulk Delivery, Dry Products		ton-mi		240					
		SUB-TOTAL FOR Freight/Delivery Charges									
		FIELD ESTIMATE									
ARRIVE LOCATION:		MO. 05 DAY 28 YEAR 2010 TIME 08:40		SERVICE ORDER: I AUTHORIZE WORK TO BEGIN PER SERVICE INSTRUCTIONS IN ACCORDANCE WITH THE TERMS AND CONDITIONS PRINTED ON THE LAST PAGE OF THIS FORM AND REPRESENT THAT I HAVE AUTHORITY TO ACCEPT AND SIGN THIS ORDER.							
CUSTOMER REP. DAN				SERVICE RECEIPT: I CERTIFY THAT THE MATERIALS AND SERVICES LISTED WERE RECEIVED AND ALL SERVICES PERFORMED IN A WORKMANLIKE MANNER.							
SEE LAST PAGE FOR GENERAL TERMS AND CONDITIONS				CUSTOMER AUTHORIZED AGENT							
				BJ SERVICES APPROVED							

CEMENT JOB REPORT



CUSTOMER EnCana Oil & Gas USA Inc			DATE 28-MAY-10		F.R. # 1001625285		SERV. SUPV. JOSE E CARCAMO		
LEASE & WELL NAME FEDERAL #29-6W PF29 - API 05045113340000			LOCATION 29-7S-95W			COUNTY-PARISH-BLOCK Garfield Colorado			
DISTRICT Grand Junction			DRILLING CONTRACTOR RIG #			TYPE OF JOB Plug & Abandon			

SIZE & TYPE OF PLUGS	LIST-CSG-HARDWARE	PHYSICAL SLURRY PROPERTIES						
		SACKS OF CEMENT	SLURRY WGT PPG	SLURRY YLD FT ³	WATER GPS	PUMP TIME HR:MIN	Bbl SLURRY	Bbl MIX WATER
MATERIALS FURNISHED BY BJ								
WATER		0	8.34	0	0	00:00	10	
CLASS G CEMENT +.04 STATIC FREE		30	15.8	1.16	5		6	3.46
WATER			8.34				1.5	
Available Mix Water <u>130</u> Bbl. Available Displ. Fluid <u>130</u> Bbl.							TOTAL	17.5 3.46

HOLE			TBG-CSG-D.P.				COLLAR DEPTHS			
SIZE	% EXCESS	DEPTH	SIZE	WGT.	TYPE	DEPTH	GRADE	SHOE	FLOAT	STAGE
			4.5	11.6	CSG	1700				

LAST CASING				PKR-CMT RET-BR PL-LINER		PERF. DEPTH		TOP CONN		WELL FLUID	
SIZE	WGT	TYPE	DEPTH	BRAND & TYPE	DEPTH	TOP	BTM	SIZE	THREAD	TYPE	WGT.
						638	638	2.375	8 RD	FRESH WATER	8.34

DISPL. VOLUME		DISPL. FLUID		CAL. PSI	CAL. MAX PSI	OP. MAX	MAX TBG PSI		MAX CSG PSI		MIX WATER
VOLUME	UOM	TYPE	WGT.	BUMP PLUG	TO REV.	SQ. PSI	RATED	Operator	RATED	Operator	
9.7	BBLs	WATER	8.34	0	0	0	0	0	0	100	

EXPLANATION: TROUBLE SETTING TOOL, RUNNING CSG, ETC. PRIOR TO CEMENTING: none

PRESSURE/RATE DETAIL						EXPLANATION	
TIME HR:MIN.	PRESSURE - PSI		RATE BPM	Bbl. FLUID PUMPED	FLUID TYPE	SAFETY MEETING: BJ CREW <input checked="" type="checkbox"/> CO. REP. <input type="checkbox"/>	
	PIPE	ANNULUS				TEST LINES 4000 PSI	CIRCULATING WELL - RIG <input type="checkbox"/> BJ <input checked="" type="checkbox"/>
05:35						SINGLE JOURNEY MANAGEMENT MEETING	
05:50						LEAVE YARD	
08:40						ARRIVED ON LOCATION	
08:55						SPOT EQUIPMENT	
09:15						PRE RIG UP SAFETY MEETING	
09:30						START RIGGING UP	
09:50						PRE JOB SAFETY MEETING	
10:05						START JOB	
10:10	4000					PRESSURE TEST LINES	
10:11	0		.9	4	WATER	PUMP SPACER AHEAD	
10:18	34		.9	4	CEMENT	PUMP CEMENT SLURRY	
10:20	0		.8	1.5	WATER	PUMP SPACER BEHIND	
10:25						SHUT DOWN / WASH LINES	
11:00						START 2ND TOP OUT	
11:12	0		1	6	WATER	PUMP SPACER AHEAD / CIRCULATE WELL	
11:20	34		1	1.25	CEMENT	PUMP CEMENT SLURRY	
11:22						SHUT DOWN / HAD TO WAIT FOR WELDER TO CUT WELL HEAD	
13:15						CUSTOMER RELEASED US FROM LOCATION	
13:25						POST JOB SAFETY MEETING	
14:00						DEPART LOCATION	
						THANK YOU FOR USING BJ SERVICES.	

CEMENT JOB REPORT



PRESSURE/RATE DETAIL						EXPLANATION		
TIME HR:MIN.	PRESSURE - PSI		RATE BPM	Bbl. FLUID PUMPED	FLUID TYPE	SAFETY MEETING: BJ CREW <input checked="" type="checkbox"/> CO. REP. <input type="checkbox"/>		
	PIPE	ANNULUS				TEST LINES 4000 PSI		
						CIRCULATING WELL - RIG <input type="checkbox"/> BJ <input checked="" type="checkbox"/>		
BUMPED PLUG	PSI TO BUMP PLUG	TEST FLOAT EQUIP.	BBL.CMT RETURNS/ REVERSED	TOTAL BBL. PUMPED	PSI LEFT ON CSG	SPOT TOP OUT CEMENT		
Y <input checked="" type="checkbox"/> N <input type="checkbox"/> 0		Y <input checked="" type="checkbox"/> N <input type="checkbox"/> .5		17.5	0	SERVICE SUPERVISOR SIGNATURE:		
						Y <input type="checkbox"/> N <input type="checkbox"/>		



BJ Services JobMaster Program Version 3.20
Job Number: 1001625285
Customer: ENCANA OIL & GAS
Well Name: FEDERAL 29-6W-PF29

