

Downhole Schematic for Federal 29-6W (PF29)



Project :South Piceance

Area :Parachute

As Of : 05/28/2010

API # :05045113340000

County :GARFIELD

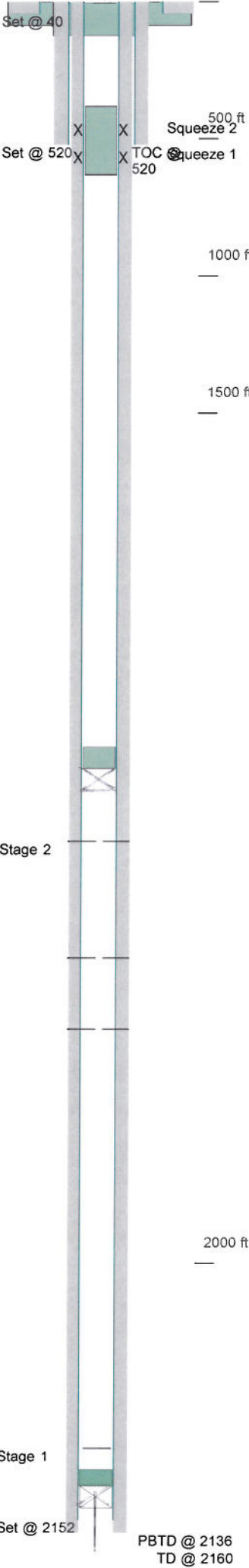
GL :ft

Surface Location : SENW SEC. 29 T7S-R95W 6TH P.M.

BHL : SENW SEC. 29 T7S-R95W 6TH P.M.

KB to GL :14.0 ft

KB :ft



Casing Details								
Section	Hole	Casing	Mass	Set At	Length	Thread	Grade	Description
Conductor	24.000	16	42	40	40			Conductor
Surface	12.250	8.625	0	520	2	ST&C		Shoe
		8.625	32	519	44	ST&C	J55	Casing
		8.625	0	474	2	ST&C		Float
		8.625	32	473	476	ST&C	J55	Casing
Production	7.875	4.5	0	2,152	2	LT&C		Shoe
		4.5	11.6	2,151	42	LT&C	I-80	Casing
		4.5	0	2,108	2	LT&C		Float
		4.5	11.6	2,107	2,109	LT&C	I-80	Casing

Cement Details				Blend / Additives	
Section	Sequence	Top	Density		
Conductor	Scavenger	0	0.0	4 yds Redi-mix /	
Surface	Tail	0	15.8	G / 2% CACL2 + .25lbs. Cello Flake	
Production	Lead	0	13.0	Prem Lite High Strength / .05 static free + .25 cello + .3 cd32 + 2 kol seal + .7 fl52 + .35 sms + .2 ba-59 + 1% c-c.	

Tubing and Downhole Equipment			
O.D.	Length	Depth	Description
4.000	4.00	4.00	Cut off casing 4' below ground,
24.000	40.00	40.00	Cement
12.250	128.00	128.00	Cement
4.000	258.00	638.00	Cement
4.000	2.00	1,698.00	CEMENT
4.000	4.00	1,700.00	CIBP
4.000	1.50	2,134.00	CEMENT
4.000	4.00	2,136.00	CIBP

Perforations								
Stage	Date	From	To	Shots	Date	From	To	Shots
Stage 1	11/05/2006	2,110	2,118	32	11/15/2006	1,862	1,868	12
Stage 2						1,820	1,834	28
						1,752	1,768	32

Frac Summary
Stage 1 : 2,110 - 2,118, 32 - 0.410" shots, 174 bbls of 20 lb linear gel, 41256 lbs of 20-40 20/40 WHITE
Report Date: 11/15/2006
Stage 2 : 1,752 - 1,868, 72 - 0.340" shots, 321 bbls of 20 # linear gel, 70989 lbs of 20-40 20/40 WHITE
Report Date: 11/15/2006

Bridge Plug Details			
Depth	Date Set	Plug Type	Sacks Cement
2,136.0	11/05/2006	CIBP	2
1,700.0	05/26/2010	CIBP	3

Cement Squeeze								
Squeeze #	Date	From	To	Holes	Squeeze #	Date	From	To
2	05/27/2010	470	471	4	1	05/26/2010	570	571
# Sacks	20				# Sacks	50		

Comments