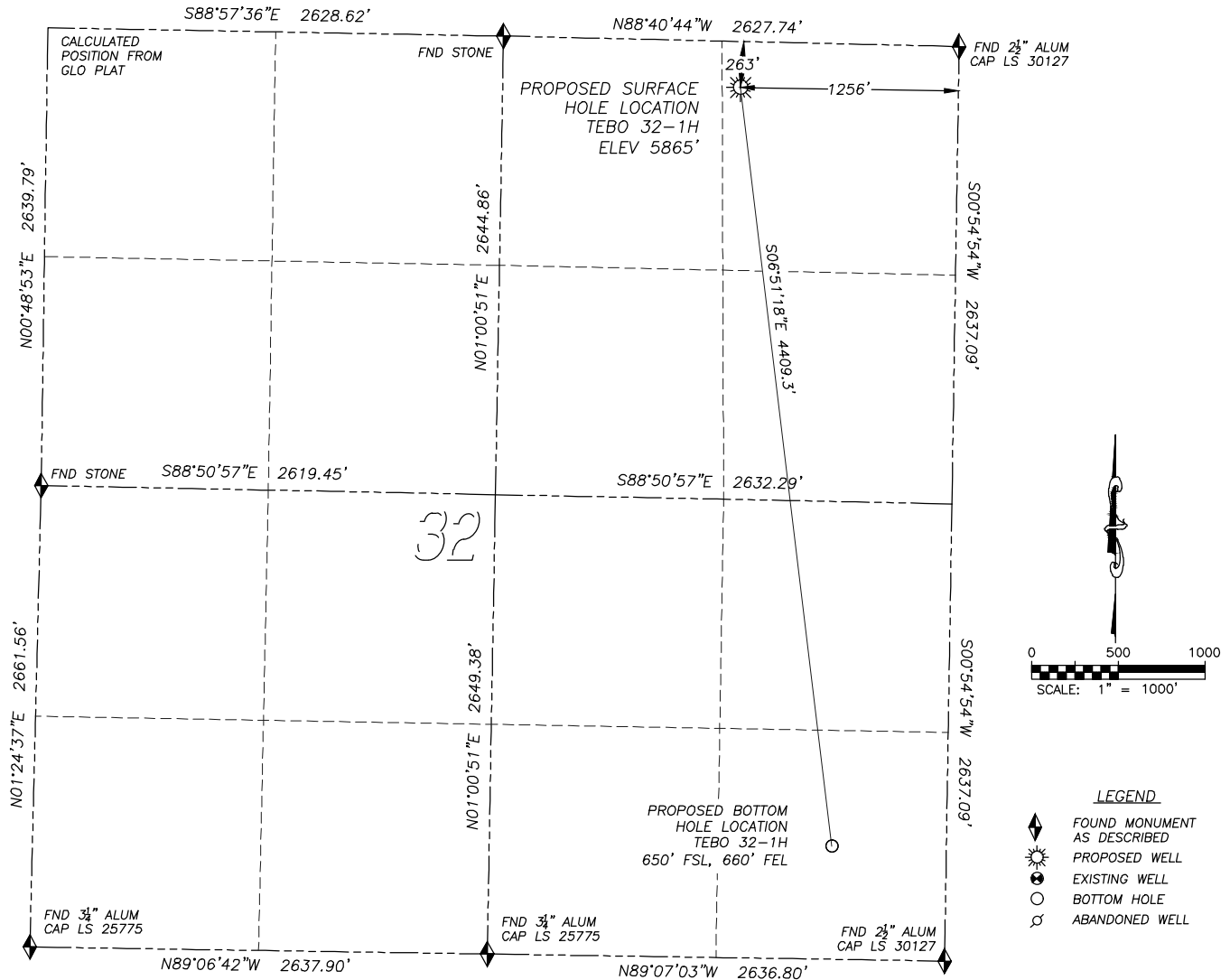


WELL LOCATION CERTIFICATE

TEBO 32-1H

SECTION 32, TOWNSHIP 4 SOUTH, RANGE 64 WEST OF THE 6TH PRINCIPAL MERIDIAN

**NAD 83 LATITUDE AND LONGITUDE**

TEBO 32-1H SURFACE HOLE:

LATITUDE: N39.66604°

LONGITUDE: W104.57014°

ELEVATION: 5865'

FOOTAGE: 263' FNL, 1256' FEL

PDOP: 1.8

QTR/QTR: NE4/NE4

PROP LINE: 263' NORTH

GPS OPERATOR: K. DALEY

BOTTOM HOLE:

LATITUDE: N39.65402°

LONGITUDE: W104.56827°

FOOTAGE: 650' FSL, 660' FEL

IN ACCORDANCE WITH A REQUEST FROM LARIO OIL & GAS COMPANY, DALEY LAND SURVEYING, INC. HAS DETERMINED THE SURFACE LOCATION OF THE TEBO 32-1H WELL TO BE 263' FNL, 1256' FEL, AS MEASURED AT NINETY (90) DEGREES FROM THE SECTION LINES OF SECTION 32, TOWNSHIP 4 SOUTH, RANGE 64 WEST OF THE 6TH PRINCIPAL MERIDIAN, ARAPAHOE COUNTY, COLORADO. THE BOTTOM HOLE LOCATION, PROVIDED BY THE CLIENT IS TO BE 650' FSL, 660' FEL.

I HEREBY CERTIFY THAT THIS WELL LOCATION CERTIFICATE WAS PREPARED BY ME OR UNDER MY DIRECT SUPERVISION, THAT THE WORK WAS COMPLETED ON 3/02/2011 FOR AND ON BEHALF OF LARIO OIL & GAS COMPANY, AND THAT THIS MAP DOES NOT REPRESENT A BOUNDARY SURVEY, IT IS NOT A LAND SURVEY PLAT OR AN IMPROVEMENT SURVEY PLAT AND IT IS NOT TO BE RELIED UPON FOR THE ESTABLISHMENT OF FENCE, BUILDING OR OTHER FUTURE IMPROVEMENT LINES.

NOTES:

- 1) BEARINGS FOR THIS MAP ARE ASSUMED AND BASED UPON GPS OBSERVATIONS MADE BETWEEN MONUMENTS LOCATED AT THE NORTHEAST CORNER AND NORTH QUARTER CORNER OF SECTION 32, T.4S., R.64W.
- 2) HORIZONTAL DATUM IS NAD83.
- 3) VERTICAL DATUM IS NAVD88. ELEVATIONS ARE DERIVED FROM NGS BM R-374, ELEVATION 5863.69.
- 4) SEE LOCATION DRAWING FOR VISIBLE IMPROVEMENTS WITHIN 600' OF PROPOSED SURFACE HOLE LOCATION.
- 5) SURFACE USE: PASTURE.

NOTICE: According to Colorado law you MUST commence any legal action based upon any defect in this W.L.C. within three years after you first discover such defect. In no event may any action based upon any such defect in this W.L.C. be commenced more than ten years from the date of the certification shown hereon.

FOR AND ON BEHALF OF
DALEY LAND SURVEYING INC.,
Robert Daley, PLS 35597

