

EOG RESOURCES, INC.

ADDENDUM TO LEGAL PLAT FOR

LION CREEK #13-06H

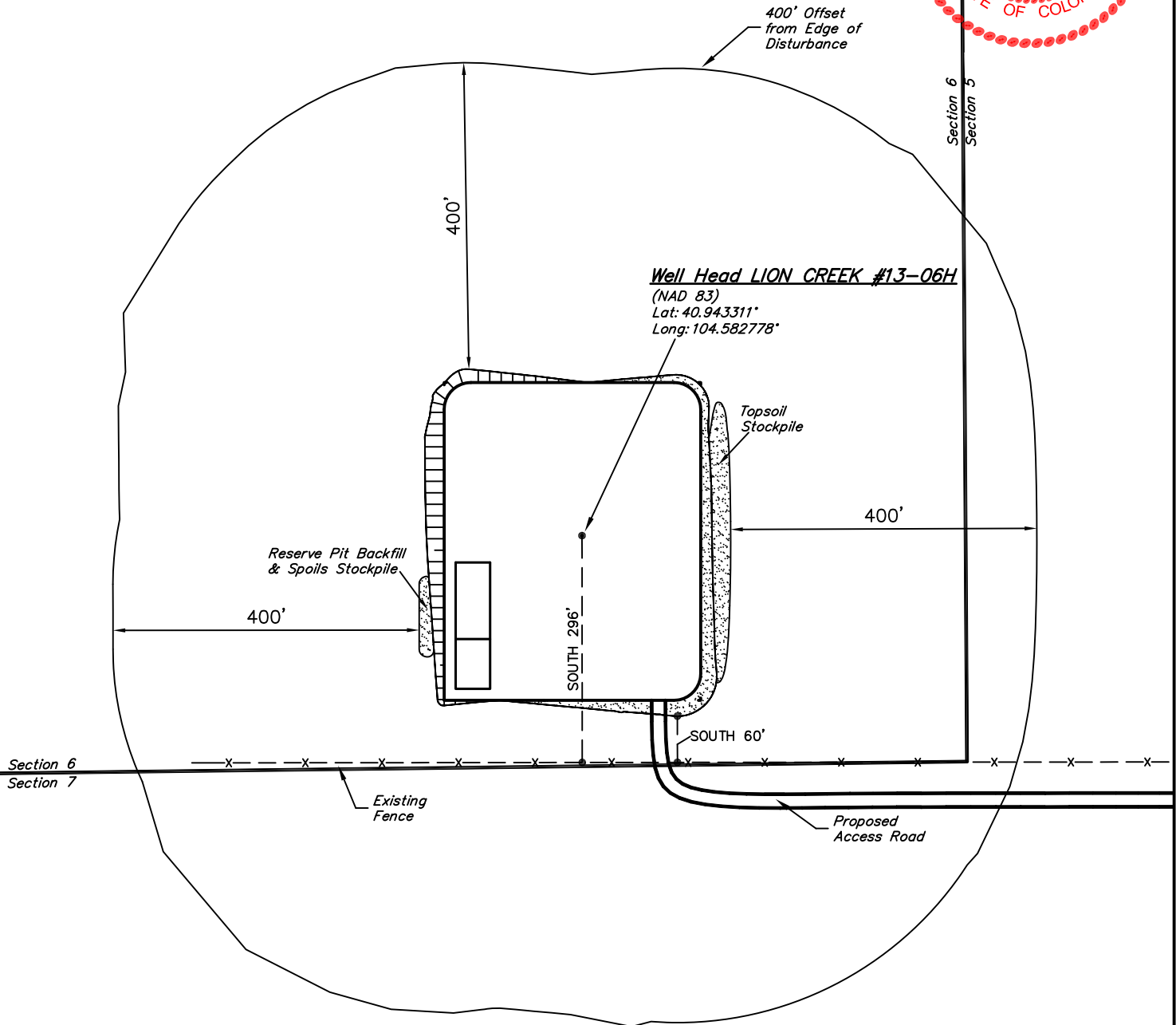
SECTION 6, T11N, R64W, 6th P.M.

301' FSL 501' FEL

SCALE: 1" = 200'

DATE: 02-18-11

DRAWN BY: K.O.



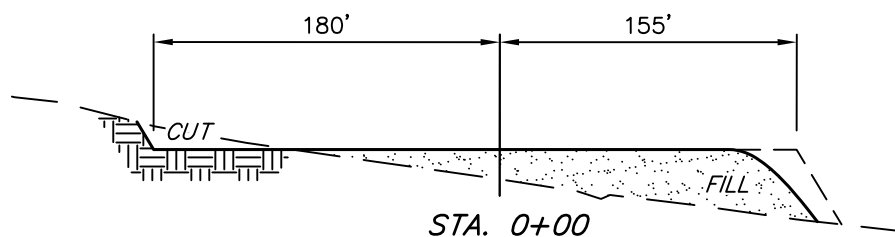
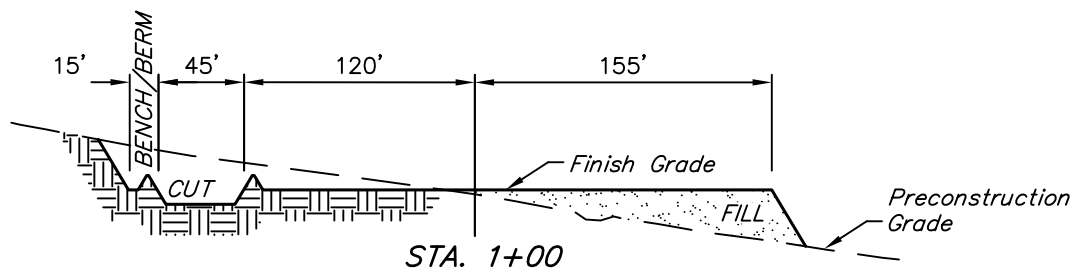
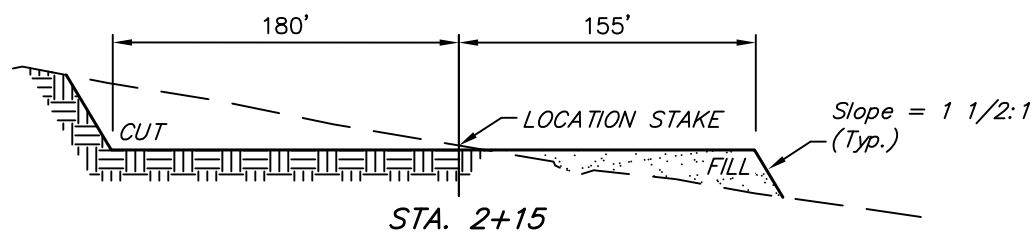
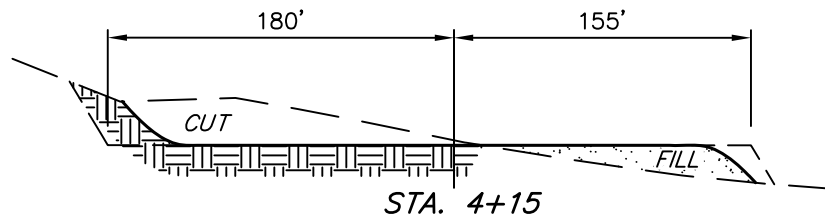
UINTAH ENGINEERING & LAND SURVEYING  
85 So. 200 East \* Vernal, Utah 84078 \* (435) 789-1017

1" = 40'  
X-Section  
Scale  
1" = 100'

DATE: 02-18-11  
DRAWN BY: K.O.

EOG RESOURCES, INC.  
CONSTRUCTION LAYOUT CROSS SECTIONS FOR  
LION CREEK #13-06H  
SECTION 6, T11N, R64W, 6th P.M.  
301' FSL 501' FEL

FIGURE #2



NOTE:

Topsoil should not be Stripped Below Finished Grade on Substructure Area.

APPROXIMATE ACREAGES

WELL SITE DISTURBANCE = ± 4.373 ACRES  
ACCESS ROAD DISTURBANCE = ± 4.242 ACRES  
TOTAL = ± 8.615 ACRES

\* NOTE:  
FILL QUANTITY INCLUDES 5% FOR COMPACTION

APPROXIMATE YARDAGES

(6") Topsoil Stripping = 3,050 Cu. Yds.  
Remaining Location = 16,840 Cu. Yds.  
TOTAL CUT = 19,890 CU.YDS.  
FILL = 16,490 CU.YDS.

EXCESS MATERIAL = 3,400 Cu. Yds.  
Topsoil & Pit Backfill = 3,400 Cu. Yds.  
(1/2 Pit Vol.)  
EXCESS UNBALANCE = 0 Cu. Yds.  
(After Interim Rehabilitation)

UINTAH ENGINEERING & LAND SURVEYING  
85 So. 200 East \* Vernal, Utah 84078 \* (435) 789-1017

# EOG RESOURCES, INC.

## TYPICAL RIG LAYOUT FOR

LION CREEK #13-06H  
SECTION 6, T11N, R64W, 6th P.M.  
301' FSL 501' FEL

FIGURE #3

SCALE: 1" = 60'

DATE: 02-18-11

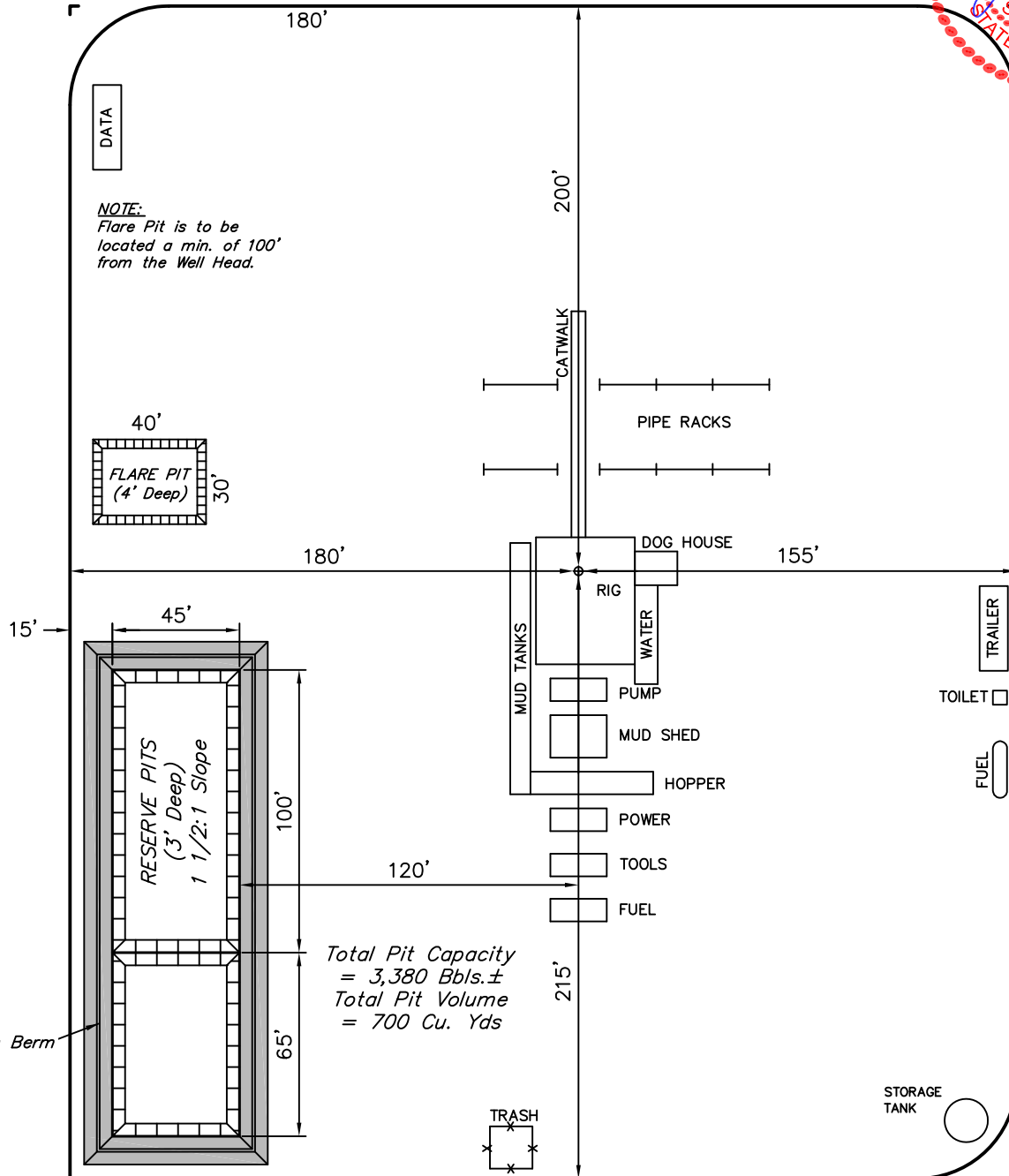
DRAWN BY: K.O.



DATA

### NOTE:

Flare Pit is to be located a min. of 100' from the Well Head.



Total Pit Capacity  
= 3,380 Bbls.±  
Total Pit Volume  
= 700 Cu. Yds

3' High Berm

Proposed  
Access Road

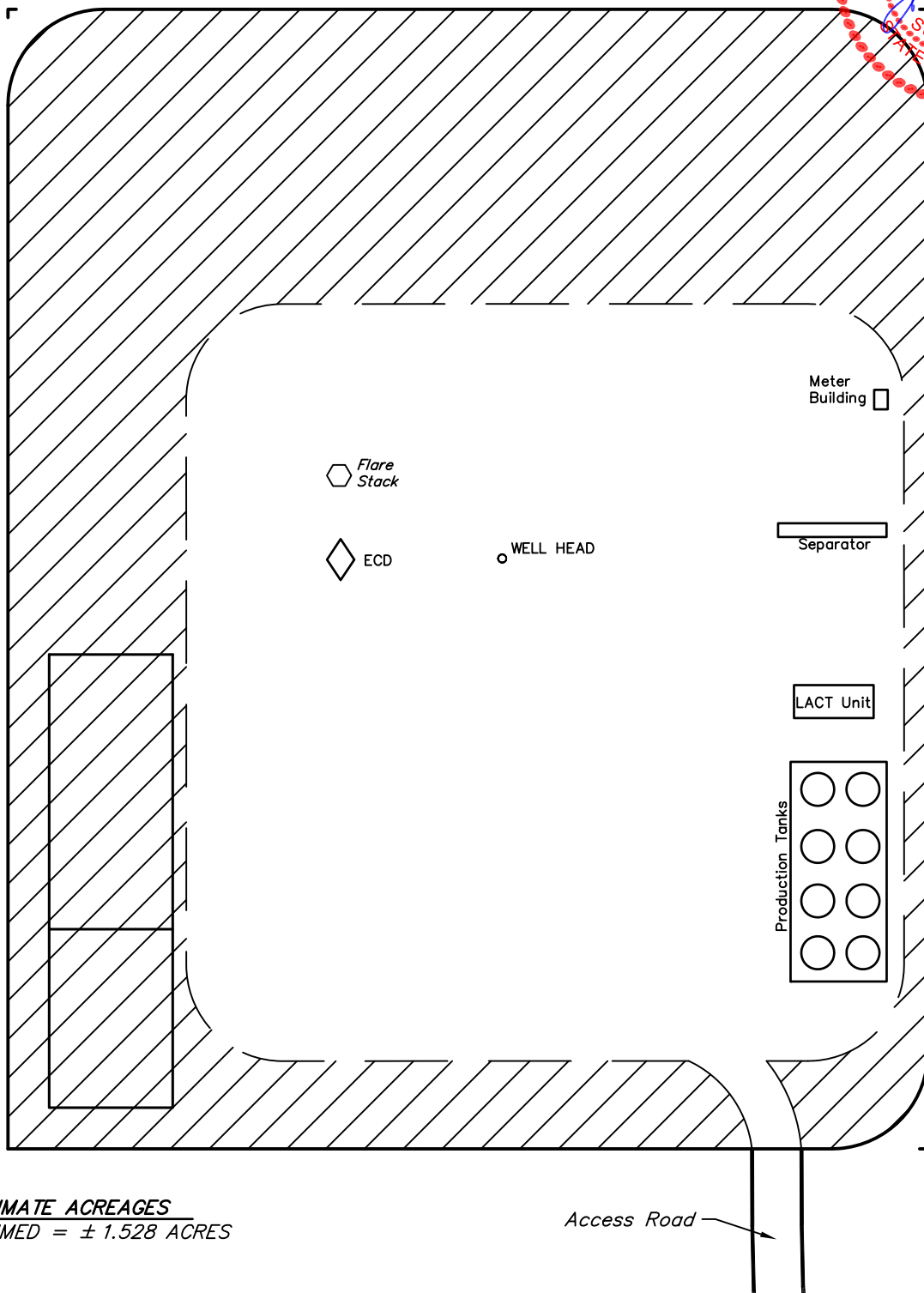
UINTAH ENGINEERING & LAND SURVEYING

85 So. 200 East \* Vernal, Utah 84078 \* (435) 789-1017



EOG RESOURCES, INC.  
RECLAMATION DIAGRAM FOR  
LION CREEK #13-06H  
SECTION 6, T11N, R64W, 6th P.M.  
301' FSL 501' FEL

FIGURE #4  
SCALE: 1" = 60'  
DATE: 02-18-11  
DRAWN BY: K.O.



APPROXIMATE ACREAGES  
UN-RECLAIMED =  $\pm 1.528$  ACRES



UINTAH ENGINEERING & LAND SURVEYING  
85 So. 200 East \* Vernal, Utah 84078 \* (435) 789-1017