

EOG RESOURCES, INC.
LION CREEK #13-06H
LOCATED IN WELD COUNTY, COLORADO
SECTION 6, T11N, R64W, 6th P.M.

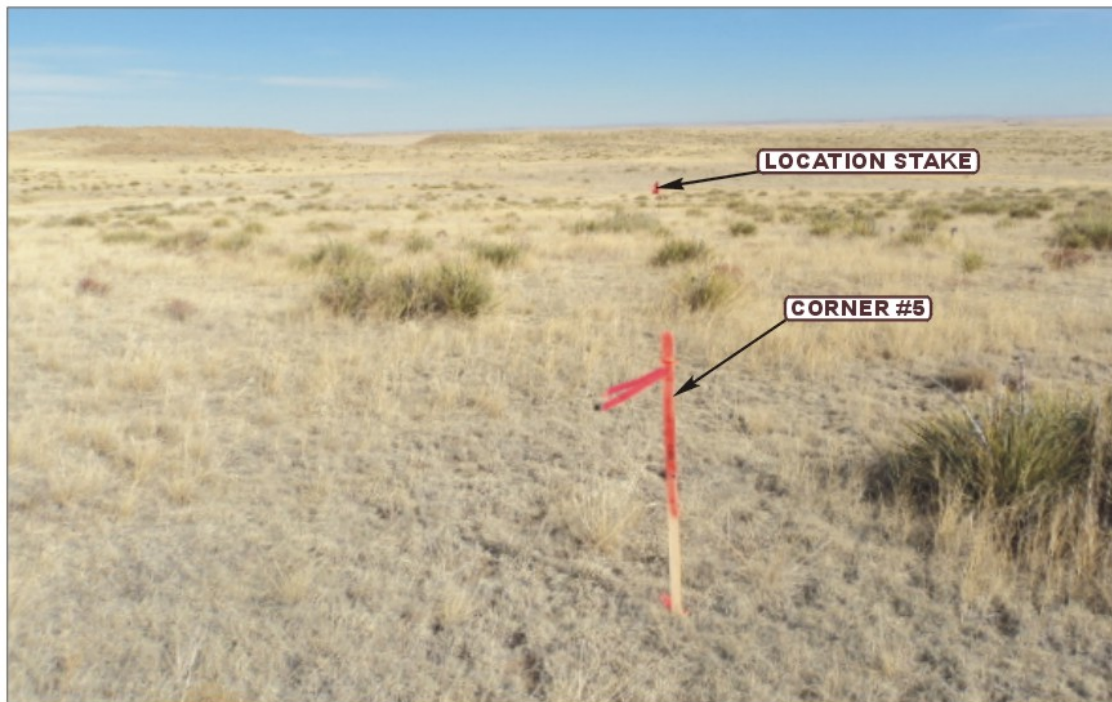


PHOTO: VIEW FROM CORNER #5 TO LOCATION STAKE

CAMERA ANGLE: EASTERLY



PHOTO: VIEW FROM BEGINNING OF PROPOSED ACCESS

CAMERA ANGLE: WESTERLY



UELS Uintah Engineering & Land Surveying
85 South 200 East Vernal, Utah 84078
(435) 789-1017 * FAX (435) 789-1813

LOCATION PHOTOS

02 **17** **11**
MONTH DAY YEAR

TAKEN BY: G.M.

DRAWN BY: C.A.G.

REVISED: 00-00-00

PHOTO
P1

EOG RESOURCES, INC.
LION CREEK #13-06H
LOCATED IN WELD COUNTY, COLORADO
SECTION 6, T11N, R64W, 6th P.M.



PHOTO: VIEW OF LOCATION STAKE

CAMERA ANGLE: NORTHERLY



PHOTO: VIEW OF LOCATION STAKE

CAMERA ANGLE: EASTERLY



UELS Uintah Engineering & Land Surveying
85 South 200 East Vernal, Utah 84078
(435) 789-1017 * FAX (435) 789-1813

LOCATION PHOTOS

02 17 11
MONTH DAY YEAR

PHOTO
P2

TAKEN BY: G.M. DRAWN BY: C.A.G. REVISED: 00-00-00

EOG RESOURCES, INC.
LION CREEK #13-06H
LOCATED IN WELD COUNTY, COLORADO
SECTION 6, T11N, R64W, 6th P.M.



PHOTO: VIEW OF LOCATION STAKE

CAMERA ANGLE: SOUTHERLY



PHOTO: VIEW OF LOCATION STAKE

CAMERA ANGLE: WESTERLY



UELS

Uintah Engineering & Land Surveying
85 South 200 East Vernal, Utah 84078
(435) 789-1017 * FAX (435) 789-1813

LOCATION PHOTOS

02 **17** **11**
MONTH DAY YEAR

TAKEN BY: G.M. DRAWN BY: C.A.G. REVISED: 00-00-00

PHOTO
P3