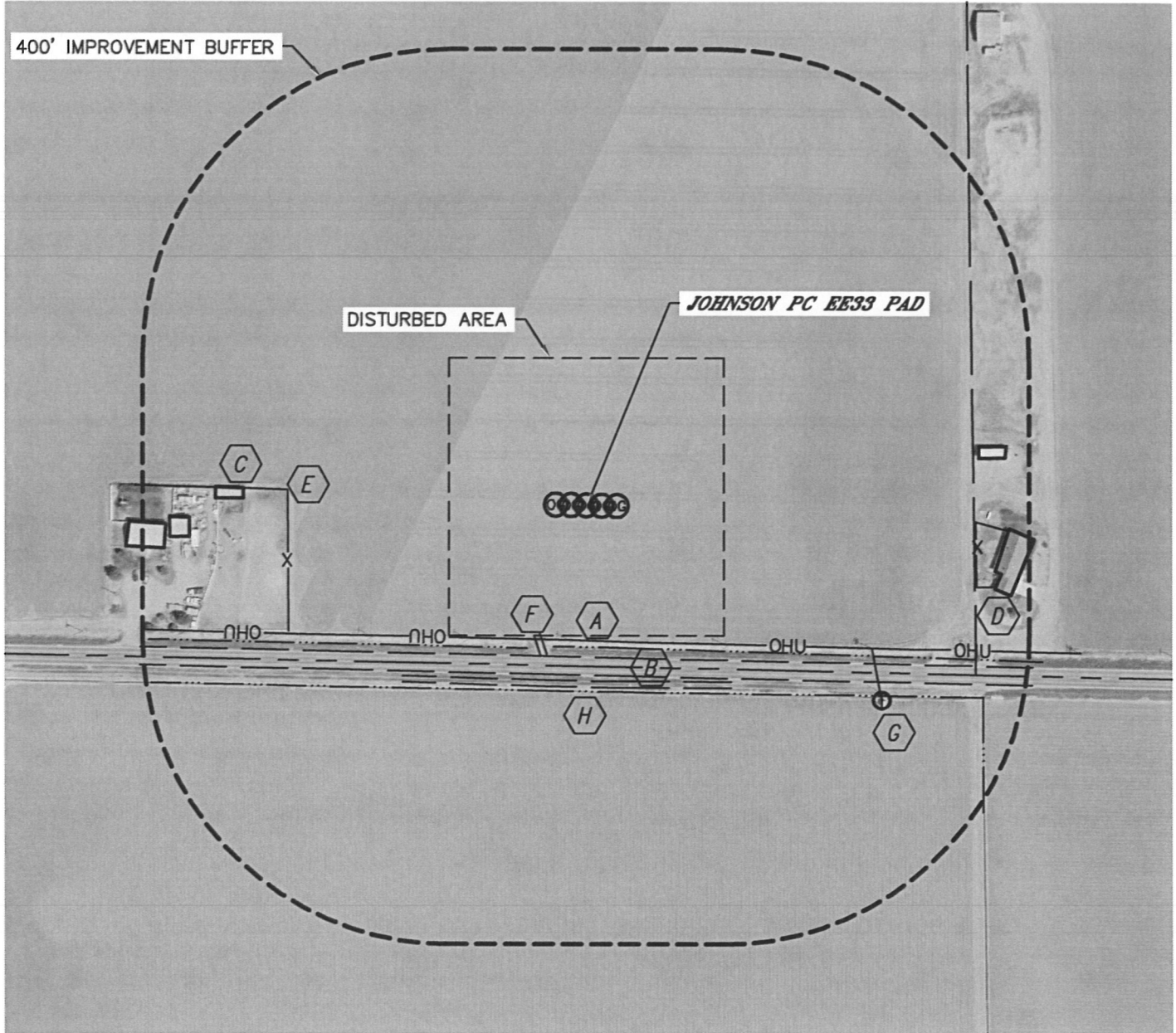


## LOCATION DRAWING

JOHNSON PC EE33 PAD

SECTION: 33  
TOWNSHIP: 7N  
RANGE: 65W



### IMPROVEMENTS:

(DISTANCES ARE MEASURED FROM THE JOHNSON PC EE33-23D LOCATION)

- |          |                                  |          |                            |
|----------|----------------------------------|----------|----------------------------|
| <b>A</b> | OVERHEAD UTILITY 176' S          | <b>F</b> | FIELD ROAD 180' SW, 228' S |
| <b>B</b> | COUNTY ROAD 74 197' S            | <b>G</b> | IRRIGATION WELL 462' SE    |
| <b>C</b> | BUILDING 448' W, 520' W, 517' NE | <b>H</b> | DITCH 187' S, 242' S       |
| <b>D</b> | HOUSE 542' E, 551' W             |          |                            |
| <b>E</b> | FENCE 391' W, 510' E             |          |                            |

NEAREST: BUILDING 448' W, PUBLIC ROAD (CR 74) 197' S,  
ABOVE GROUND UTILITY 176' S, RAILROAD 5280'+, PROPERTY LINE 209' S