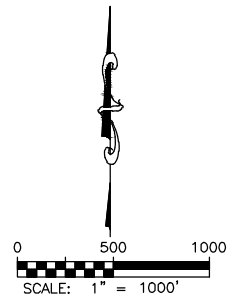
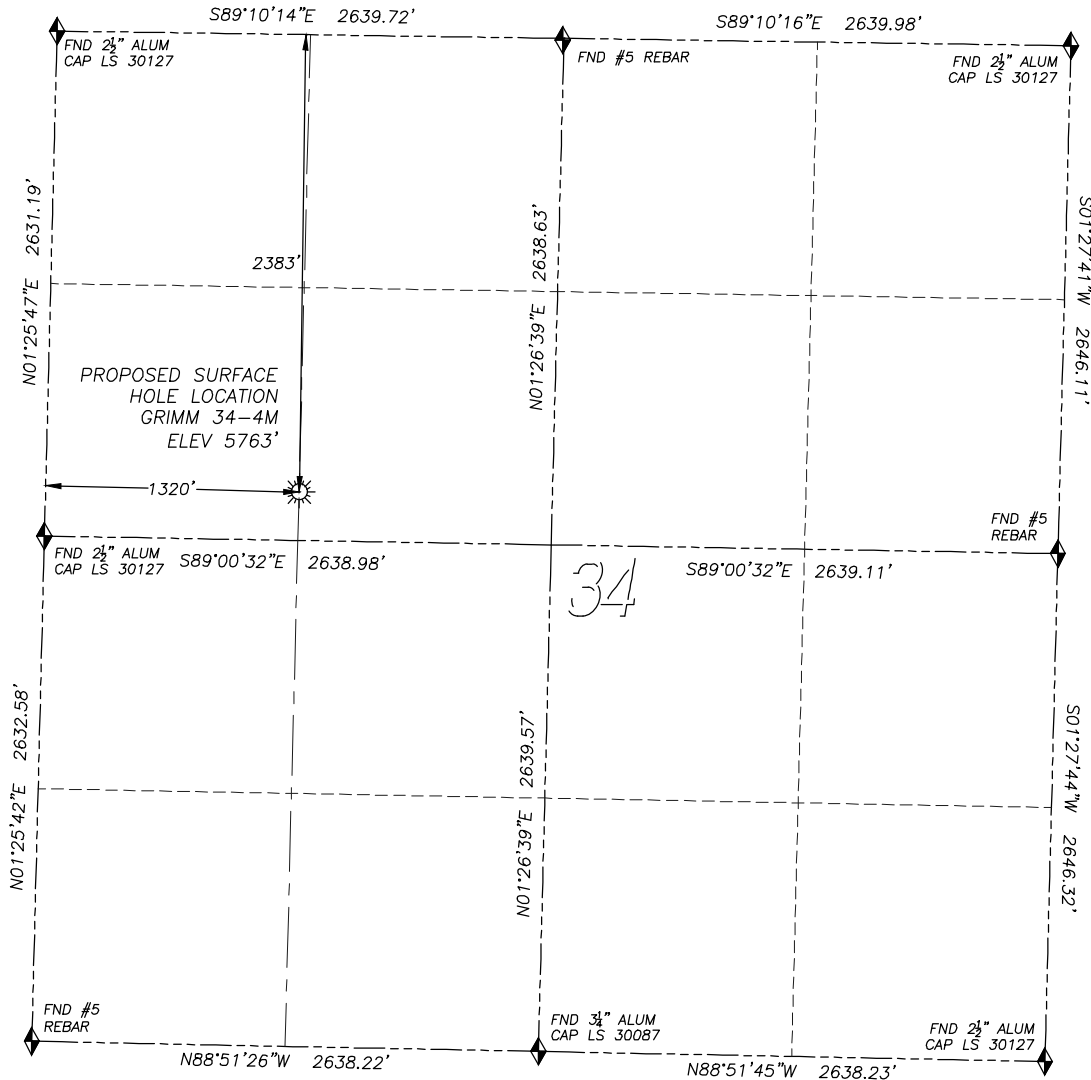


WELL LOCATION CERTIFICATE

GRIMM 34-4M

SECTION 34, TOWNSHIP 4 SOUTH, RANGE 64 WEST OF THE 6TH PRINCIPAL MERIDIAN

**LEGEND**

- ◆ FOUND MONUMENT AS DESCRIBED
- ☼ PROPOSED WELL
- EXISTING WELL
- BOTTOM HOLE
- ⊗ ABANDONED WELL

NAD 83 LATITUDE AND LONGITUDE

GRIMM 34-4M SURFACE HOLE:

LATITUDE: N39.65979°
 LONGITUDE: W104.54231°
 ELEVATION: 5763'
 FOOTAGE: 2383' FNL, 1320' FWL
 PDOP: 2.1
 QTR/QTR: SE4/NW4
 PROP LINE: 252' SOUTH
 GPS OPERATOR: K. DALEY

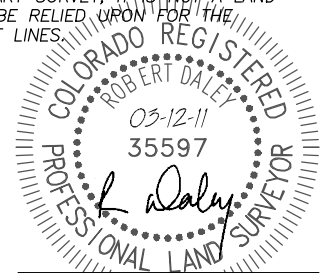
IN ACCORDANCE WITH A REQUEST FROM LARIO OIL & GAS COMPANY, DALEY LAND SURVEYING, INC. HAS DETERMINED THE SURFACE LOCATION OF THE GRIMM 34-4M WELL TO BE 2383' FNL, 1320' FWL, AS MEASURED AT NINETY (90) DEGREES FROM THE SECTION LINES OF SECTION 34, TOWNSHIP 4 SOUTH, RANGE 64 WEST OF THE 6TH PRINCIPAL MERIDIAN, ARAPAHOE COUNTY, COLORADO.

I HEREBY CERTIFY THAT THIS WELL LOCATION CERTIFICATE WAS PREPARED BY ME OR UNDER MY DIRECT SUPERVISION, THAT THE WORK WAS COMPLETED ON 3/11/2011 FOR AND ON BEHALF OF LARIO OIL & GAS COMPANY, AND THAT THIS MAP DOES NOT REPRESENT A BOUNDARY SURVEY, IT IS NOT A LAND SURVEY PLAT OR AN IMPROVEMENT SURVEY PLAT AND IT IS NOT TO BE RELIED UPON FOR THE ESTABLISHMENT OF FENCE, BUILDING OR OTHER FUTURE IMPROVEMENT LINES.

NOTES:

- 1) BEARINGS FOR THIS MAP ARE ASSUMED AND BASED UPON GPS OBSERVATIONS MADE BETWEEN MONUMENTS LOCATED AT THE NORTHWEST CORNER AND WEST QUARTER CORNER OF SECTION 34, T.4S., R.64W.
- 2) HORIZONTAL DATUM IS NAD83.
- 3) VERTICAL DATUM IS NAVD88. ELEVATIONS ARE DERIVED FROM NGS BM R-374, ELEVATION 5863.69.
- 4) SEE LOCATION DRAWING FOR VISIBLE IMPROVEMENTS WITHIN 600' OF PROPOSED SURFACE HOLE LOCATION.
- 5) SURFACE USE: AGRICULTURAL.

NOTICE: According to Colorado law you MUST commence any legal action based upon any defect in this W.L.C. within three years after you first discover such defect. In no event may any action based upon any such defect in this W.L.C. be commenced more than ten years from the date of the certification shown hereon.



FOR AND ON BEHALF OF
DALEY LAND SURVEYING INC.,
Robert Daley, PLS 35597