

ENSIGN

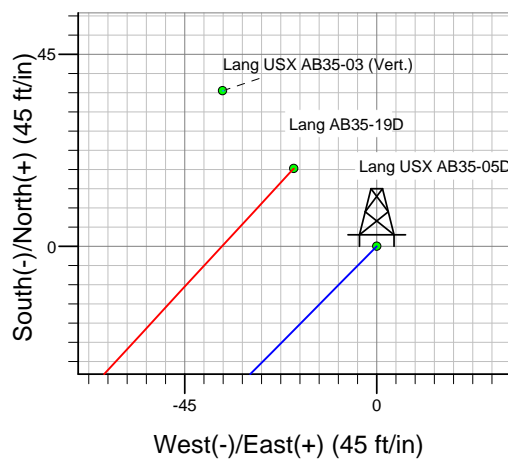
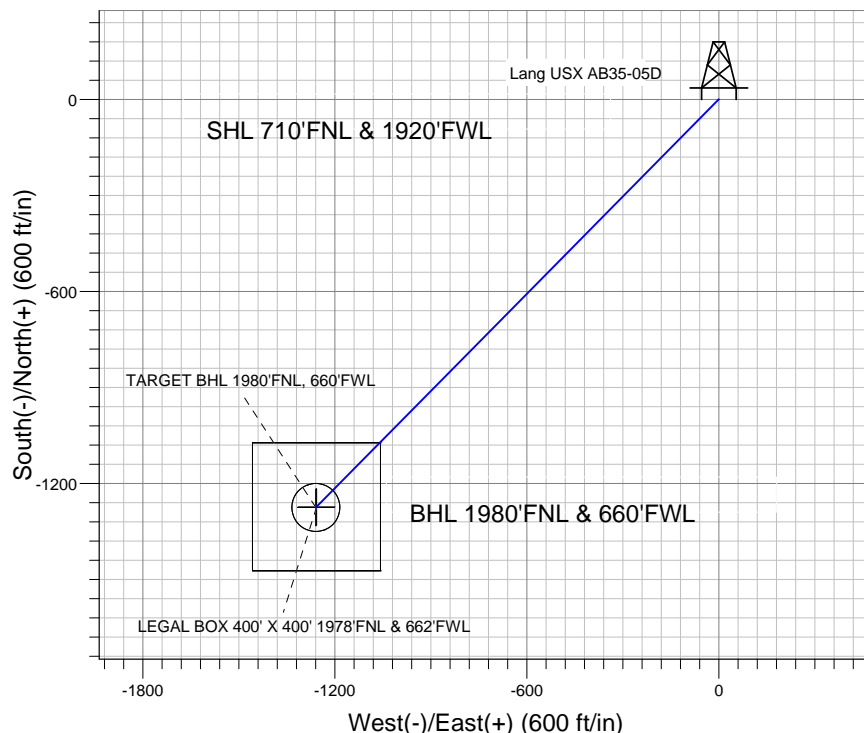
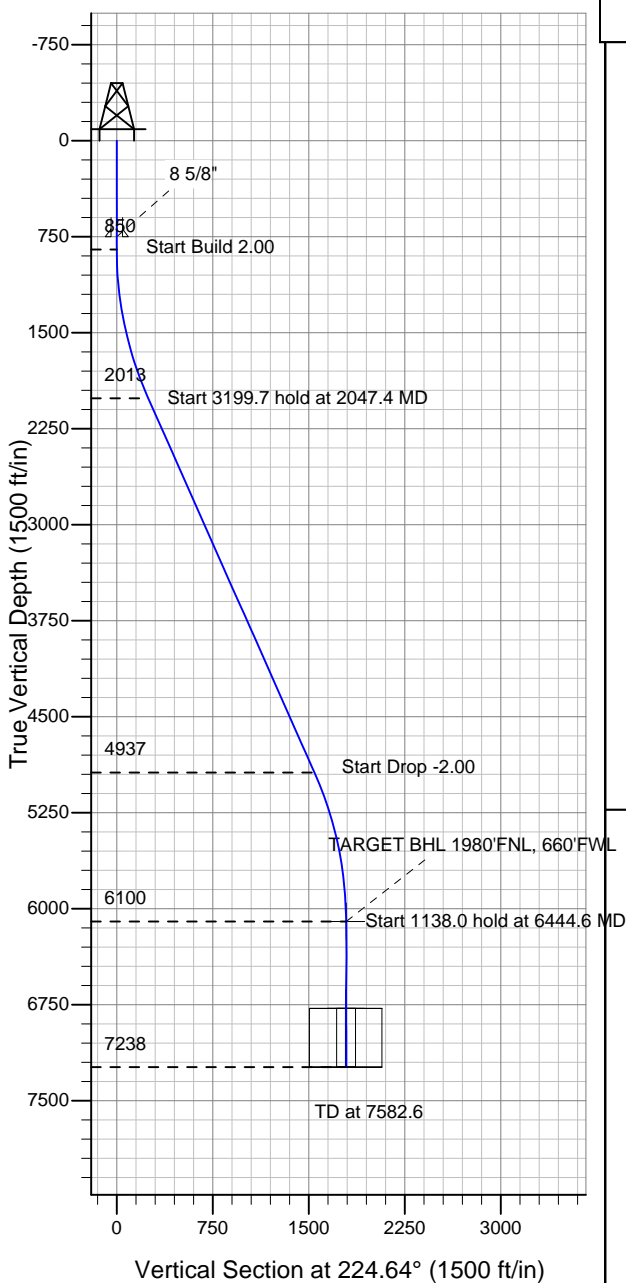
Directional

Well Name: Lang USX AB35-05D

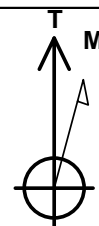
Surface Location: Lang USX AB35-05D Pad Sec.35-T7N-64W
 North American Datum 1983 , US State Plane 1983 , Colorado Northern Zone
 Ground Elevation: 4845.0

+N/-S	+E/-W	Northing	Easting	Latitude	Longitude	Slot
0.0	0.0	1439283.34	3272435.14	40.535100	-104.519840	
Original Well Elev WELL @ 4858.0ft (Original Well Elev)						

NOBLE ENERGY INC WELD COUNTY CO



Lang USX AB35-05D Pad Sec.35-T7N-64W
 Lang USX AB35-05D
 Noble Lang USX AB35-05D Plan #1 (2-24-11)
 16:26, March 09 2011



Azimuths to True North
 Magnetic North: 8.78°

Magnetic Field
 Strength: 53256.7snT
 Dip Angle: 67.21°
 Date: 3/9/2011
 Model: IGRF2010

WELLBORE TARGET DETAILS (LAT/LONG)

Name	TVD	+N/-S	+E/-W	Latitude	Longitude	Shape
TARGET BHL 1980'FNL, 660'FWL	6100.0	-1275.1	-1259.2	40.531600	-104.524370	Point
LEGAL BOX 400' X 400' 1978'FNL & 662'FWL	6778.0	-1273.1	-1257.2	40.531605	-104.524363	Rectangle (Sides: L400.0 W400.0)
TARGET CIRCLE 1980'FNL & 660'FWL	6778.0	-1275.1	-1259.2	40.531600	-104.524370	Circle (Radius: 75.0)

SECTION DETAILS

Sec	MD	Inc	Azi	TVD	+N/-S	+E/-W	DLeg	TFace	VSec	Target
1	0.0	0.00	0.00	0.0	0.0	0.0	0.00	0.00	0.0	
2	850.0	0.00	0.00	850.0	0.0	0.0	0.00	0.00	0.0	
3	2047.4	23.95	224.64	2012.9	-175.5	-173.3	2.00	224.64	246.6	
4	5247.2	23.95	224.64	4937.1	-1099.6	-1085.9	0.00	0.00	1545.4	
5	6444.6	0.00	0.00	6100.0	-1275.1	-1259.2	2.00	180.00	1792.1	TARGET BHL 1980'FNL, 660'FWL
6	7582.6	0.00	0.00	7238.0	-1275.1	-1259.2	0.00	0.00	1792.1	