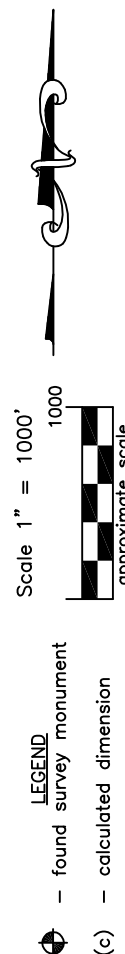
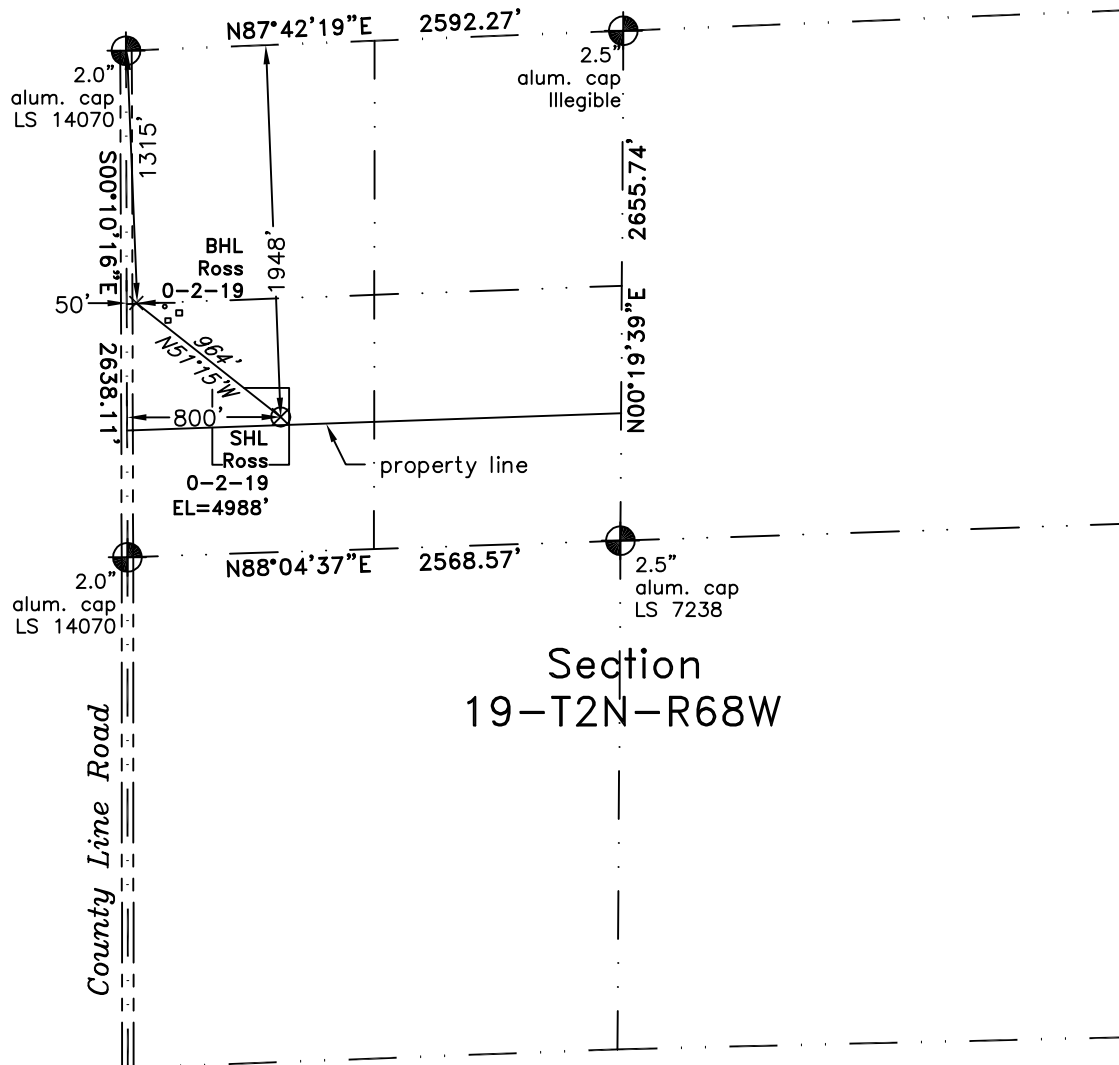


PLS Group, LLC
220 East Mulberry Street
Fort Collins, Colorado 80524

WELL LOCATION CERTIFICATE

*THIS MAP DOES NOT
REPRESENT A BOUNDARY SURVEY*



In accordance with a request from Doug Pearlman of EnCana Oil & Gas (USA) Inc., PLS Group, LLC has determined the location of the **Ross 0-2-19** well site to be SHL: 1948' FNL and 800' FWL, (BHL 1315' FNL and 50' FWL) as measured at ninety (90) degrees from the section lines of Section 19, Township 2 North, Range 68 West, 6th Principal Meridian, County of Weld, CO.

Proposed Surface Hole Data:

Latitude: N 40.12577° (BHL 40.12744°)

Longitude: W 105.05252° (BHL 105.05519°)

PDOP: 1.8

Nearest: Building 743' northwest

Above Ground Utility 774' west

Public Road 800' west

Railroad 13,000' northwest

Property Line 33' south

Well Window: SHL is 43' inside

Existing Well: Ross F Unit #1 984' northeast

Notes:

- 1) Bearings and distances based on NAD 83 Colorado North State Plane Coordinates using RTK GPS observations taken 10/13/10 by operator Tom Winans.
- 2) Conversion factor to ground (1.000276491).
- 3) Elevations based on NAVD 88 GPS heights and Geoid 2003 corrections.
- 4) See improvement map for visible improvements within 400' of pad site.
- 5) The surface use is agricultural field.

NOTICE: According to Colorado law you MUST commence any legal action based upon any defect in this W.L.C. within three years after you first discover such defect. In no event may any action based upon any defect in this W.L.C. be commenced more than ten years from this said date of the certification shown hereon.

I hereby certify that this Well Location Certificate was prepared by me or under my direct supervision on 2/23/11 for and on behalf of EnCana Oil & Gas (USA) Inc. That it is not a Land Survey Plat or an Improvement Survey Plat and that it is not to be relied upon for establishment of fences, buildings, or other future improvement lines.

John Robert McGehee PLS#38219
Well: Ross 0-2-19 WLC