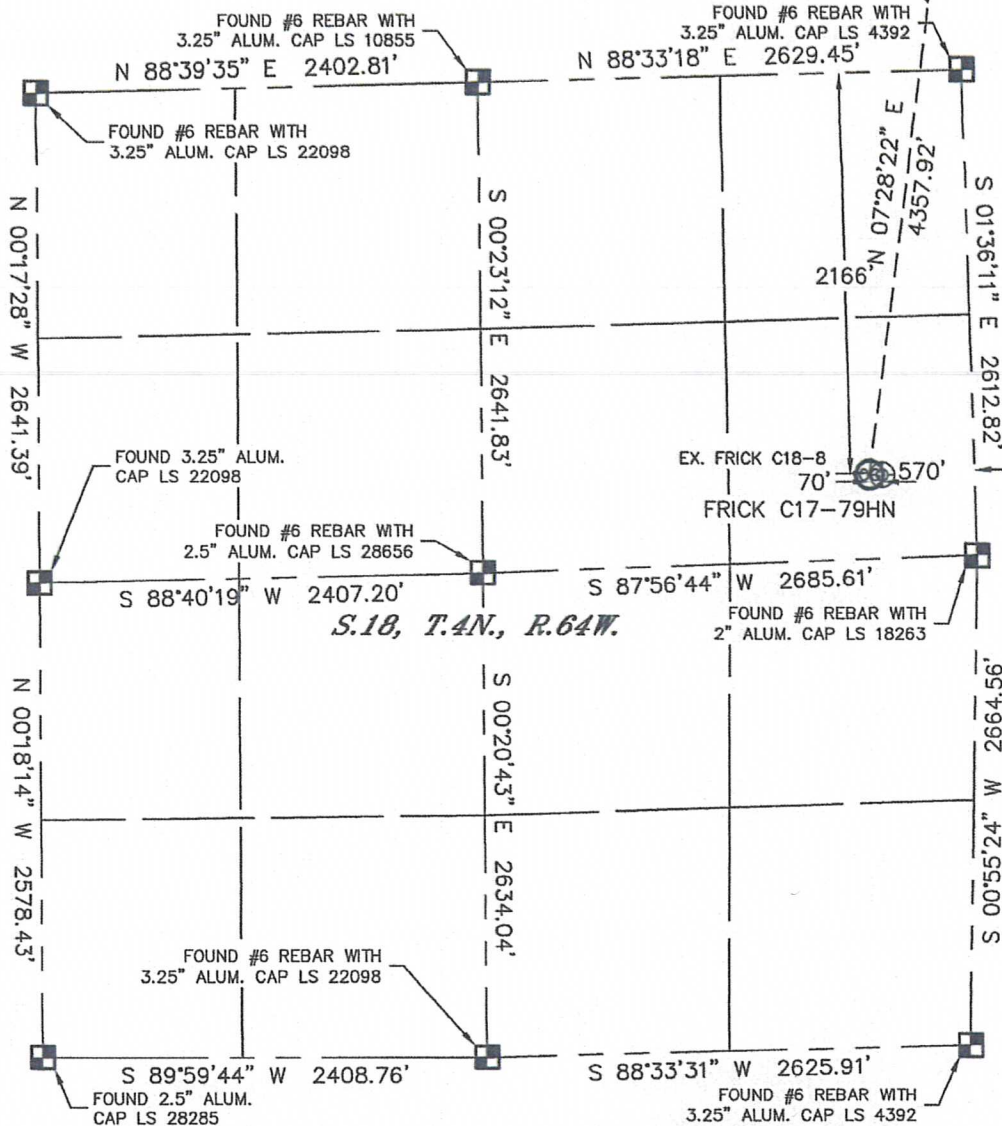


# WELL LOCATION CERTIFICATE

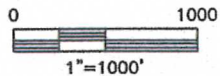
THIS MAP DOES NOT REPRESENT A BOUNDARY SURVEY

SECTION: 18  
TOWNSHIP: 4N  
RANGE: 64W



In accordance with a request from ERIK VAN DECAR with Noble Energy Inc. Lat40°, LLC has determined the surface location of the FRICK C17-79HN to be 2166' from the NORTH line and 570' from the EAST line as measured at right angles from the section lines of Section 18, Township 4 North, Range 64 West and the bottom hole to be 2140' from the SOUTH line and 75' from the WEST line as measured at right angles from the section lines of Section 8, Township 4 North, Range 64 West of the Sixth Principal Meridian, County of Weld, State of Colorado.

I hereby state that this Well Location Certificate was prepared by me, or under my direct supervision, that the fieldwork was completed on 12/8/10, for and on behalf of Noble Energy Inc. That this is not a Land Survey Plat or an Improvement Survey Plat, and that it is not to be relied upon for establishment of fence, building, or other future improvement lines.



**NOTE:**

- 1) Bearings shown are Grid Bearings of the Colorado State Plane Coordinate System, North Zone, North American Datum 1983/2007. The lineal dimensions as contained herein are based upon the "U.S. Survey Foot."
- 2) Ground elevations are based on an observed GPS elevation (NAVD 1988 DATUM).
- 3) NEAREST EXISTING WELL: FRICK C18-8 70'
- 4) IMPROVEMENTS: See LOCATION DRAWING for all visible improvements within 400' of disturbed area.
- 5) SURFACE USE: PASTURE
- 6) INSTRUMENT OPERATOR: BRIAN BRINKMAN

**SURFACE LOCATION**  
LATITUDE: 40.31366°N  
LONGITUDE: 104.58591°W  
PDOP: 1.8  
ELEV: 4759  
1/4,1/4: SE1/4NE1/4  
NEAREST PROPERTY LINE: 237' EAST

**BOTTOM HOLE**  
LATITUDE: 40.32550°N  
LONGITUDE: 104.58372°W

**NOTE**

According to Colorado law, you must commence any legal action based upon any defect in this W.L.C. within three years after you discover such defect. In no event, may any action based upon any defect in this survey be commenced more than ten years after the date of the certificate shown hereon. (13-80-105 C.R.S.)

## LEGEND

- = ALIQUOT MONUMENT AS DESCRIBED
- = CALCULATED POSITION

*SHEET 1 of 2*

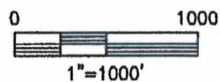
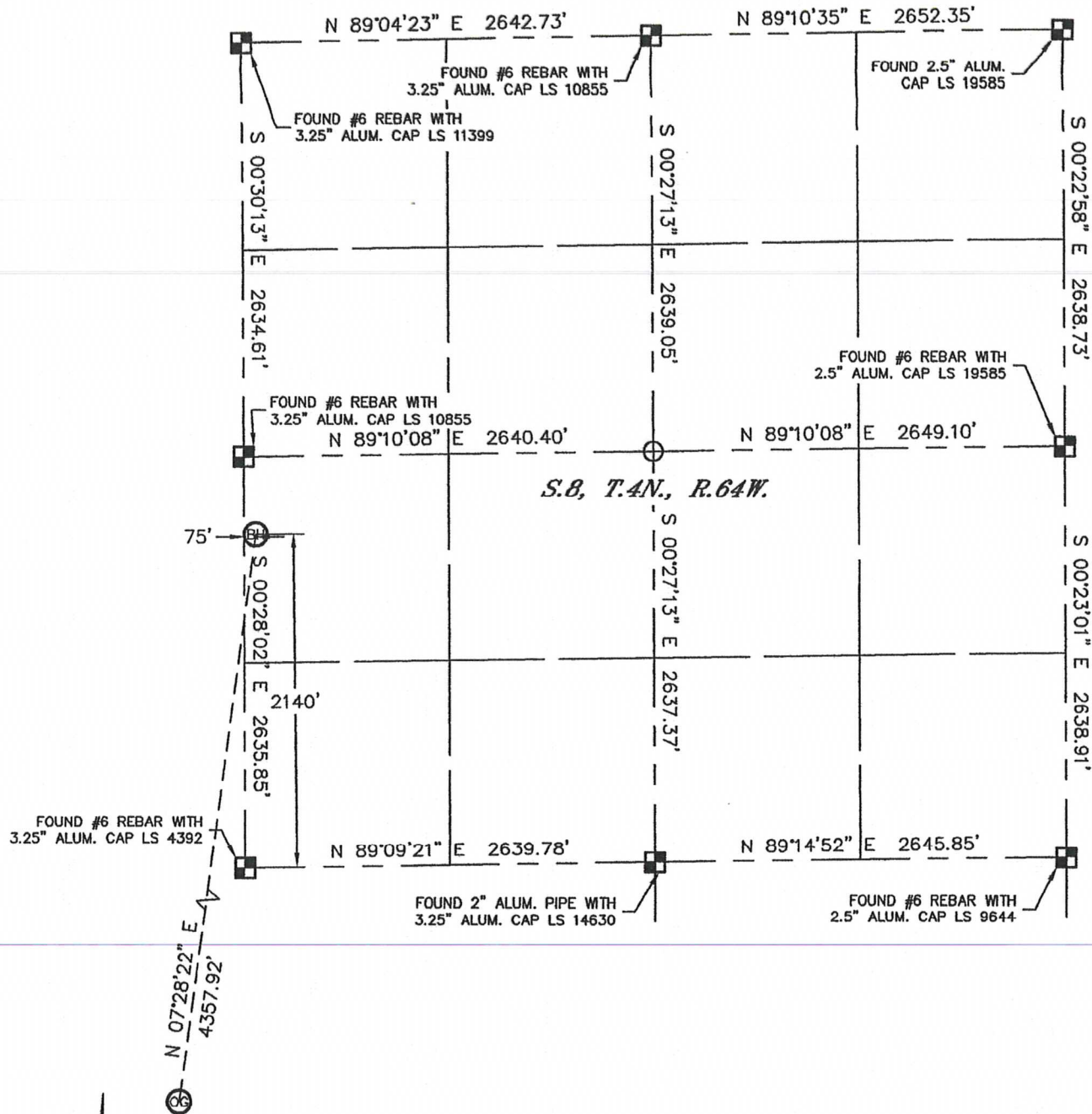
Brian T. Brinkman—On behalf of Lat40°, LLC  
Colorado Licensed Professional  
Land Surveyor No. 38175 PROJECT#: 2010161



# WELL LOCATION CERTIFICATE

THIS MAP DOES NOT REPRESENT A BOUNDARY SURVEY



SECTION: 18  
TOWNSHIP: 4N  
RANGE: 64W



## NOTE

According to Colorado law, you must commence any legal action based upon any defect in this W.L.C. within three years after you discover such defect. In no event, may any action based upon any defect in this survey be commenced more than ten years after the date of the certificate shown hereon. (13-80-105 C.R.S.)

## LEGEND

-  = ALIQUOT MONUMENT AS DESCRIBED
-  = CALCULATED POSITION

*SHEET 2 of 2*

Brian T. Brinkman—On behalf of Lat40°, LLC  
Colorado Licensed Professional  
Land Surveyor No. 38175 PROJECT#: 2010161



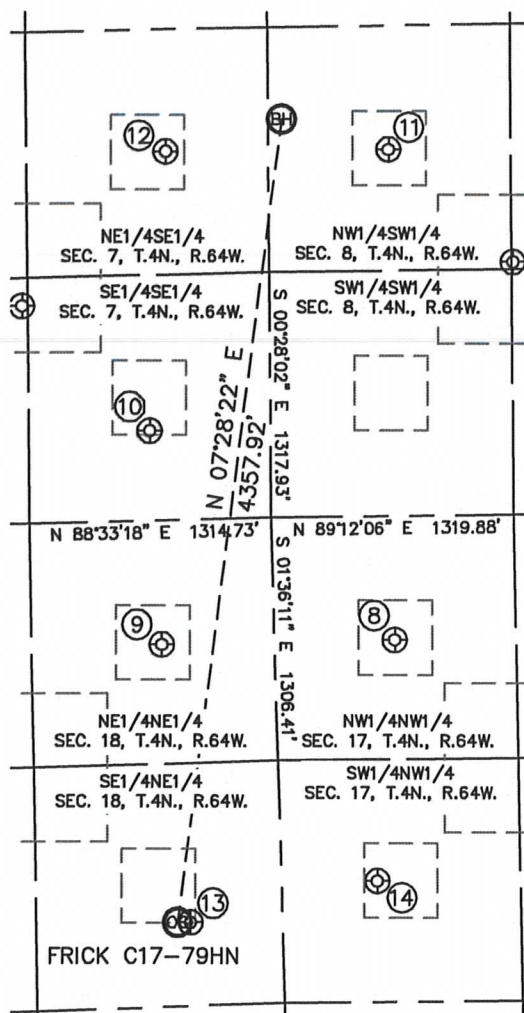
Lat40°, LLC

1635 Foxtrail Drive, Suite 325

Loveland, CO 80538

## SITE SKETCH

FRICK C17-79HN

SECTION: 18  
TOWNSHIP: 4N  
RANGE: 64W

⑧

SANDY HILL FARMS C17-4  
NW1/4NW1/4  
666' FNL  
653' FWL  
LAT-40.31780°N  
LONG-104.58162°W  
PDOP: 1.7  
ELEV: 4766

⑨

MARY MILLS 41-18  
NE1/4NE1/4  
667' FNL  
614' FEL  
LAT-40.31777°N  
LONG-104.58617°W  
PDOP: 1.3  
ELEV: 4783

⑩

OCOMA C 7-16  
SE1/4SE1/4  
482' FSL  
656' FEL  
LAT-40.32092°N  
LONG-104.58636°W  
PDOP: 4.1  
ELEV: 4802

⑪

RYDGREN 8-1  
NW1/4SW1/4  
1970' FSL  
655' FWL  
LAT-40.32504°N  
LONG-104.58165°W  
PDOP: 1.7  
ELEV: 4820

⑫

OCOMA C7-9  
NE1/4SE1/4  
1980' FSL  
580' FEL  
LAT-40.32503°N  
LONG-104.58600°W  
PDOP: 2.7  
ELEV: 4844

⑬

FRICK C18-8  
SE1/4NE1/4  
2168' FNL  
500' FEL  
LAT-40.31365°N  
LONG-104.58566°W  
PDOP: 2.2  
ELEV: 4757

⑭

SANDY HILL FARMS C17-5  
SW1/4NW1/4  
1963' FNL  
520' FWL  
LAT-40.31424°N  
LONG-104.58202°W  
PDOP: 1.6  
ELEV: 4748

