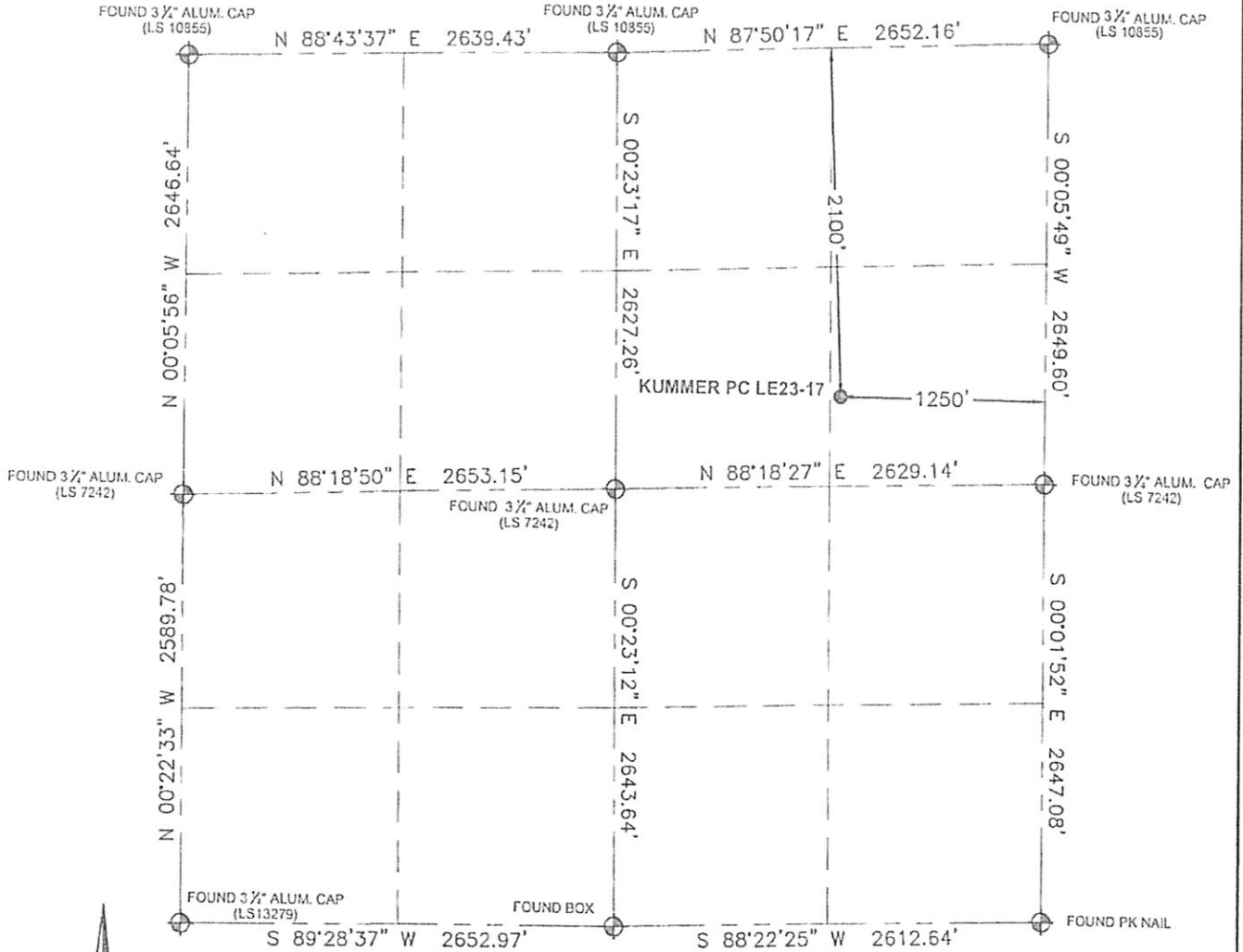


# WELL LOCATION CERTIFICATE

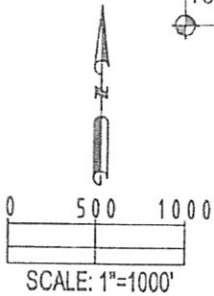
THIS MAP DOES NOT REPRESENT A BOUNDARY SURVEY

SECTION: 23  
TOWNSHIP: 8N  
RANGE: 61W



In accordance with a request from Nate McCorkell with Noble Energy Inc. Petroleum Field Services, LLC has determined the surface location of the KUMMER PC LE23-17 to be 2100' from the NORTH line and 1250' from the EAST line as measured at right angles from the section line of Section 23, Township 8 North, Range 61 West of the Sixth Principal Meridian, County of Weld, State of Colorado.

I hereby state that this Well Location Certificate was prepared by me, or under my direct supervision, that the fieldwork was completed on 2-21-11, for and on behalf of Noble Energy Inc., that this is not a Land Survey Plat or an Improvement Survey Plat, and that it is not to be relied upon for establishment of fence, building, or other future improvement lines.



**Note:**

- 1) Bearings shown are Grid Bearings of the Colorado State Plane Coordinate System, North Zone, North American Datum 1983/2007. The lineal dimensions as contained herein are based upon the "U.S. Survey Foot."
- 2) Ground elevations are based on an observed GPS elevation (NAVD 1988 DATUM).
- 3) NEAREST EXISTING WELL: MCGAHEY OIL, LLC STATE #1A, 10,189' NORTHWEST.
- 4) IMPROVEMENTS: See LOCATION DRAWING exhibit for all visible improvements within 400' of disturbed area.
- 5) SURFACE USE: RANGELAND
- 6) INSTRUMENT OPERATOR: OWEN McKEE

**Note:**

According to Colorado law, you must commence any legal action based upon any defect in this W.L.C. within three years after you first discover such defect. In no event, may any action based upon any defect in this survey be commenced more than ten years after the date of this certification shown hereon. (13-80-105 C.R.S.)

**SURFACE LOCATION:**

LATITUDE: 40.64898°N  
LONGITUDE: 104.16773°W  
PDOP: 1.8  
ELEV: 4991'  
¼¼: SE¼NE¼  
NEAREST PROPERTY LINE: 1220' East

**LEGEND**

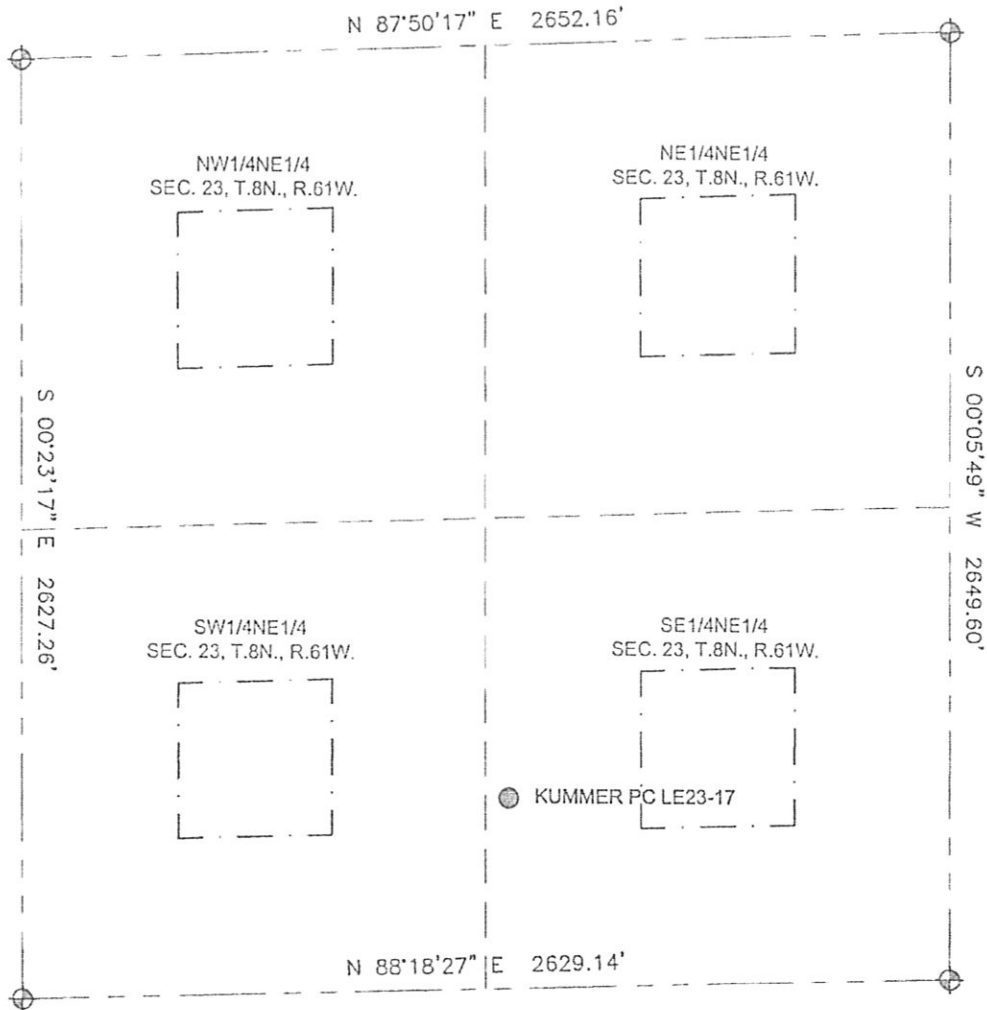
- ⊕ = ALIQUOT MONUMENT AS DESCRIBED
- = PROPOSED WELL
- ⊗ = BOTTOM HOLE
- ⊙ = EXISTING WELL



JERRY F. HARCEK JR., PLS 34997  
COLORADO LICENSED PROFESSIONAL LAND SURVEYOR  
FOR AND ON BEHALF OF P.F.S., LLC

# SITE SKETCH

SECTION: 23  
TOWNSHIP: 8N  
RANGE: 61W



## LEGEND

- = PROPOSED WELL
- ⊕ = BOTTOM HOLE
- ⊙ = EXISTING WELL

