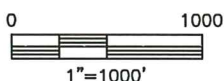
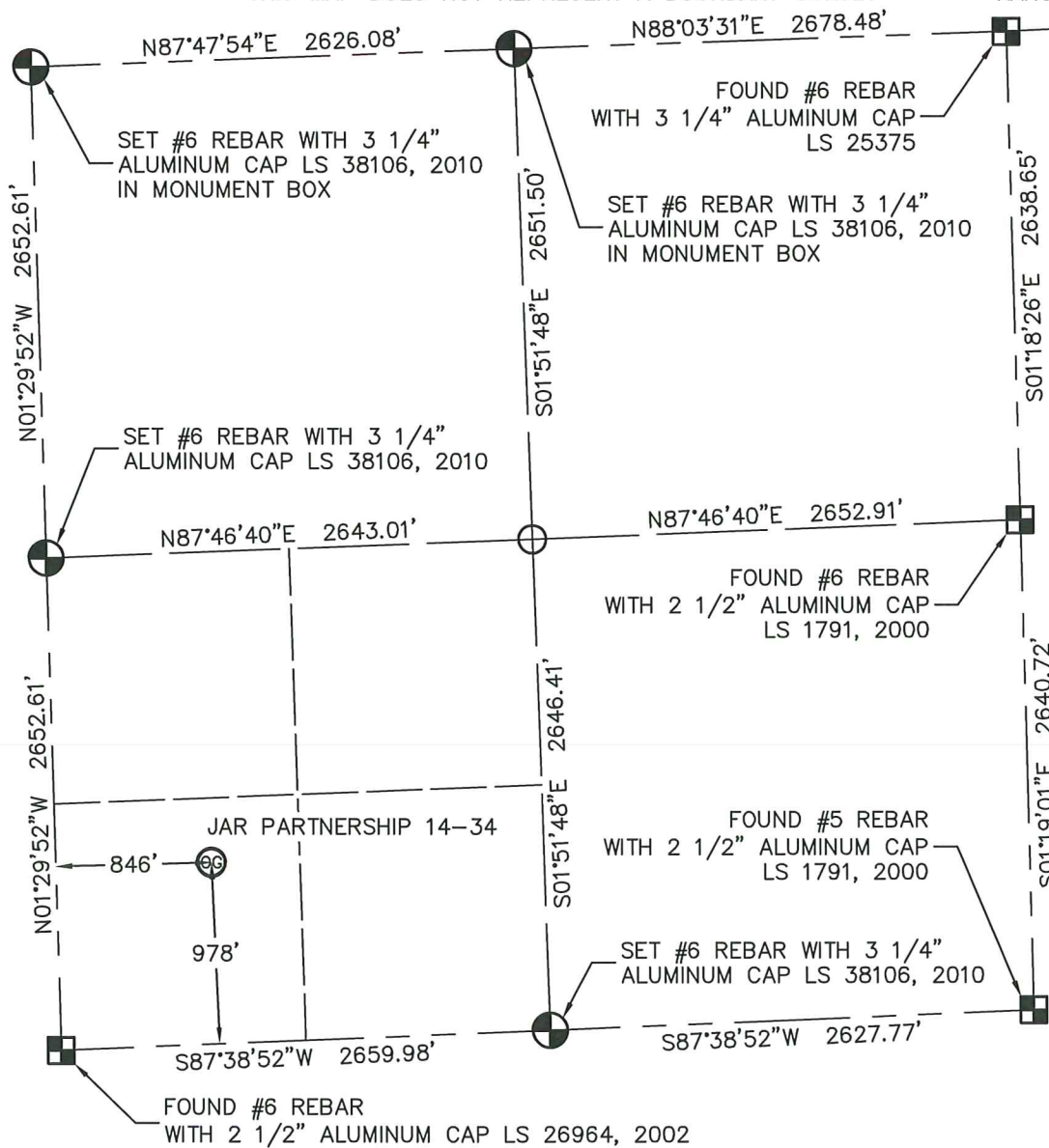


WELL LOCATION CERTIFICATE

JAR PARTNERSHIP 14-34

THIS MAP DOES NOT REPRESENT A BOUNDARY SURVEY

SECTION: 34
TOWNSHIP: 2N
RANGE: 46W



In accordance with a request from DAVID LEDET with NOBLE ENERGY INC.

King Surveyors Inc. has determined the surface location of JAR PARTNERSHIP 14-34 to be 978' from the SOUTH line and 846' from the WEST line, as measured at right angle, from the section lines of Section 34, Township 2 North, Range 46 West of the Sixth Principal Meridian, County of Yuma, State of Colorado.

I hereby state that this Well Location Certificate was prepared by me, or under my direct supervision, that the fieldwork was completed on 01-04-2011, for and on behalf of NOBLE ENERGY INC. That this is not a Land Survey Plat or an Improvement Survey Plat, and that it is not to be relied upon for establishment of fence, building, or other future improvement lines.

NOTE:

- 1) Bearings shown are Grid Bearings of the Colorado State Plane Coordinate System, North Zone, North American Datum 1983/2007. The lineal dimensions as contained herein are based upon the "U.S. Survey Foot."
- 2) Ground elevations are based on an observed GPS elevation (NAVD 1988 DATUM).
- 3) IMPROVEMENTS: See LOCATION DRAWING exhibit for all visible improvements within 400' of disturbed area.
- 4) SURFACE USE: CROP FIELD
- 5) OPERATOR: BEN ADSIT

SURFACE LOCATION

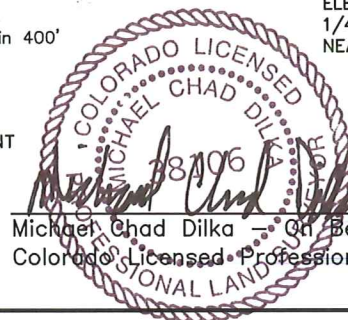
LATITUDE: 40.09300°N
LONGITUDE: 102.50805°W
PDOP: 1.6
ELEV: 3939'
1/4, 1/4: SW1/4 SW1/4
NEAREST PROPERTY LINE: 846' WEST

LEGEND

- = FOUND ALIQUOT MONUMENT AS DESCRIBED
- = CALCULATED POSITION
- = SET ALIQUOT MONUMENT AS DESCRIBED

NOTE

According to Colorado law, you must commence any legal action based upon any defect in this W.L.C. within three years after you discover such defect. In no event, may any action based upon any defect in this survey be commenced more than ten years after the date of the certificate shown hereon. (13-80-105 C.R.S.)



1/6/2011

PROJECT#: 2010378