

Well Name: SRC Pratt 29SD

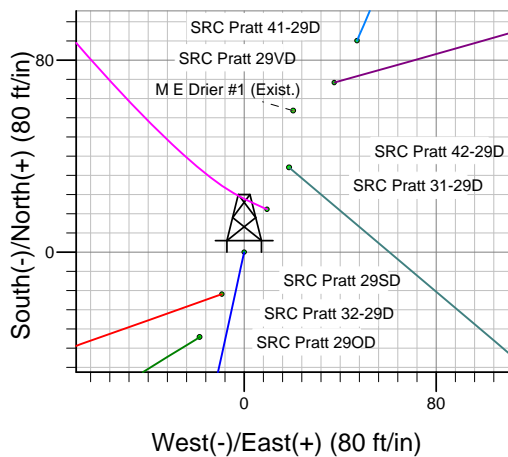
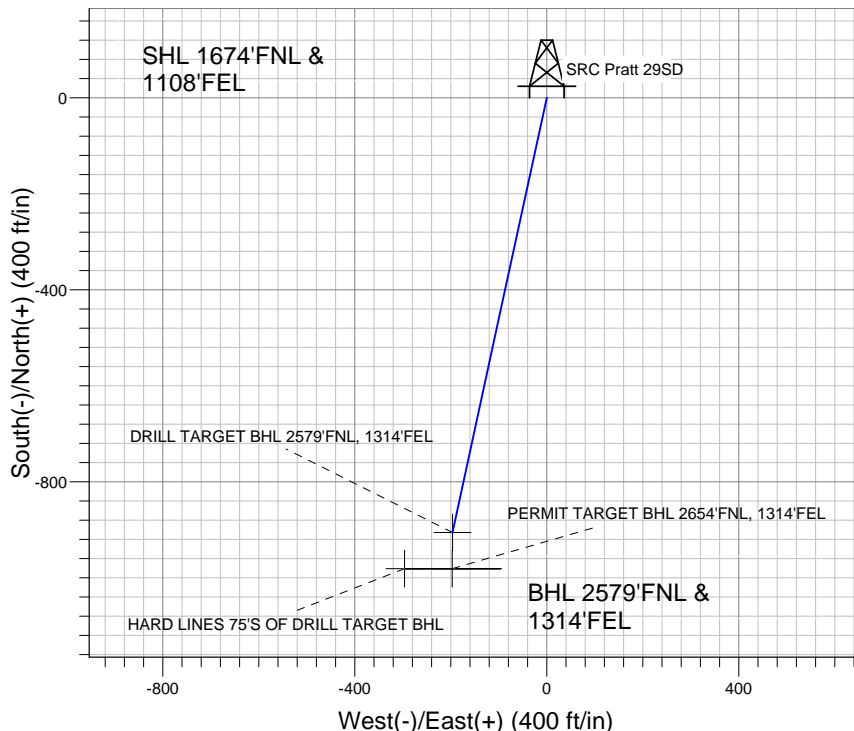
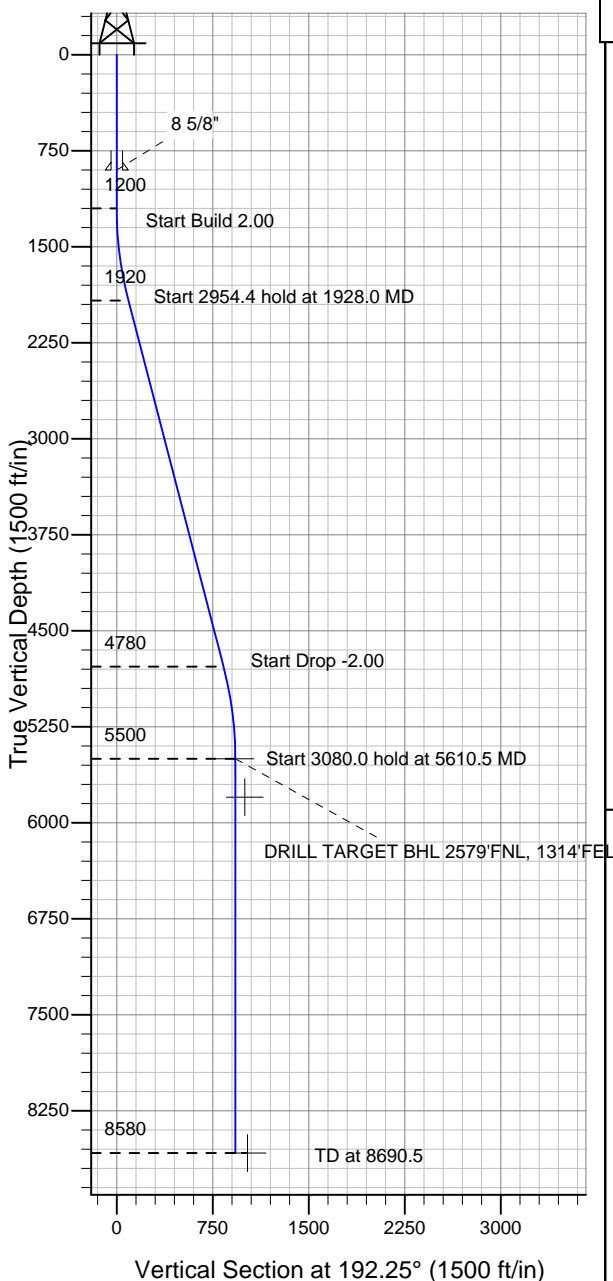
Surface Location: SRC Pratt 41-29D Pad Sec.29-T1N-R68W
North American Datum 1983 , US State Plane 1983 , Colorado Northern Zone

Ground Elevation: 5211.0

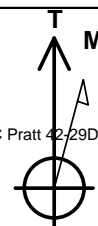
+N/-S	+E/-W	Northing	Easting	Latitude	Longitude	Slot
0.0	0.0	1252211.46	3133810.18	40.024718	-105.022193	

Original Well Elev WELL @ 5224.0ft (Original Well Elev)

Synergy Resources



SRC Pratt 41-29D Pad Sec.29-T1N-R68W
SRC Pratt 29SD
Plan #1 (3-01-11)
16:42, March 01 2011



Azimuths to True North
Magnetic North: 9.01°

Magnetic Field
Strength: 52932.6nT
Dip Angle: 66.71°
Date: 3/1/2011
Model: IGRF2010

WELLBORE TARGET DETAILS (LAT/LONG)

Name	TVD	+N/-S	+E/-W	Latitude	Longitude	Shape
DRILL TARGET BHL 2579'FNL, 1314'FEL	5500.0	-905.7	-196.6	40.022232	-105.022895	Point
PERMIT TARGET BHL 2654'FNL, 1314'FEL	5800.0	-980.7	-196.6	40.022026	-105.022895	Point
HARD LINES 75'S OF DRILL TARGET BHL	8580.0	-980.7	-296.6	40.022026	-105.023252	Polygon

SECTION DETAILS

Sec	MD	Inc	Azi	TVD	+N/-S	+E/-W	DLeg	TFace	VSec	Target
1	0.0	0.00	0.00	0.0	0.0	0.0	0.00	0.00	0.0	
2	1200.0	0.00	0.00	1200.0	0.0	0.0	0.00	0.00	0.0	
3	1928.0	14.56	192.25	1920.2	-89.9	-19.5	2.00	192.25	92.0	
4	4882.5	14.56	192.25	4779.8	-815.8	-177.1	0.00	0.00	834.8	
5	5610.5	0.00	0.00	5500.0	-905.7	-196.6	2.00	180.00	926.8	DRILL TARGET BHL 2579'FNL, 1314'FEL
6	8690.5	0.00	0.00	8580.0	-905.7	-196.6	0.00	0.00	926.8	



Synergy Resources

SEC.29-T1N-R68W

SRC Pratt 41-29D Pad Sec.29-T1N-R68W

SRC Pratt 29SD

Wellbore #1

Plan: Plan #1 (3-01-11)

Standard Planning Report

01 March, 2011

Plan Sections										
Measured Depth (ft)	Inclination (°)	Azimuth (°)	Vertical Depth (ft)	+N/-S (ft)	+E/-W (ft)	Dogleg Rate (°/100ft)	Build Rate (°/100ft)	Turn Rate (°/100ft)	TFO (°)	Target
0.0	0.00	0.00	0.0	0.0	0.0	0.00	0.00	0.00	0.00	
1,200.0	0.00	0.00	1,200.0	0.0	0.0	0.00	0.00	0.00	0.00	
1,928.0	14.56	192.25	1,920.2	-89.9	-19.5	2.00	2.00	0.00	192.25	
4,882.5	14.56	192.25	4,779.8	-815.8	-177.1	0.00	0.00	0.00	0.00	
5,610.5	0.00	0.00	5,500.0	-905.7	-196.6	2.00	-2.00	0.00	180.00	DRILL TARGET BH
8,690.5	0.00	0.00	8,580.0	-905.7	-196.6	0.00	0.00	0.00	0.00	

Database:	Landmark	Local Co-ordinate Reference:	Well SRC Pratt 29SD
Company:	Synergy Resources	TVD Reference:	WELL @ 5224.0ft (Original Well Elev)
Project:	SEC.29-T1N-R68W	MD Reference:	WELL @ 5224.0ft (Original Well Elev)
Site:	SRC Pratt 41-29D Pad Sec.29-T1N-R68W	North Reference:	True
Well:	SRC Pratt 29SD	Survey Calculation Method:	Minimum Curvature
Wellbore:	Wellbore #1		
Design:	Plan #1 (3-01-11)		

Planned Survey									
Measured Depth (ft)	Inclination (°)	Azimuth (°)	Vertical Depth (ft)	+N/-S (ft)	+E/-W (ft)	Vertical Section (ft)	Dogleg Rate (°/100ft)	Build Rate (°/100ft)	Turn Rate (°/100ft)
0.0	0.00	0.00	0.0	0.0	0.0	0.0	0.00	0.00	0.00
40.0	0.00	0.00	40.0	0.0	0.0	0.0	0.00	0.00	0.00
80.0	0.00	0.00	80.0	0.0	0.0	0.0	0.00	0.00	0.00
120.0	0.00	0.00	120.0	0.0	0.0	0.0	0.00	0.00	0.00
160.0	0.00	0.00	160.0	0.0	0.0	0.0	0.00	0.00	0.00
200.0	0.00	0.00	200.0	0.0	0.0	0.0	0.00	0.00	0.00
240.0	0.00	0.00	240.0	0.0	0.0	0.0	0.00	0.00	0.00
280.0	0.00	0.00	280.0	0.0	0.0	0.0	0.00	0.00	0.00
320.0	0.00	0.00	320.0	0.0	0.0	0.0	0.00	0.00	0.00
360.0	0.00	0.00	360.0	0.0	0.0	0.0	0.00	0.00	0.00
400.0	0.00	0.00	400.0	0.0	0.0	0.0	0.00	0.00	0.00
440.0	0.00	0.00	440.0	0.0	0.0	0.0	0.00	0.00	0.00
480.0	0.00	0.00	480.0	0.0	0.0	0.0	0.00	0.00	0.00
520.0	0.00	0.00	520.0	0.0	0.0	0.0	0.00	0.00	0.00
560.0	0.00	0.00	560.0	0.0	0.0	0.0	0.00	0.00	0.00
600.0	0.00	0.00	600.0	0.0	0.0	0.0	0.00	0.00	0.00
640.0	0.00	0.00	640.0	0.0	0.0	0.0	0.00	0.00	0.00
680.0	0.00	0.00	680.0	0.0	0.0	0.0	0.00	0.00	0.00
720.0	0.00	0.00	720.0	0.0	0.0	0.0	0.00	0.00	0.00
760.0	0.00	0.00	760.0	0.0	0.0	0.0	0.00	0.00	0.00
800.0	0.00	0.00	800.0	0.0	0.0	0.0	0.00	0.00	0.00
840.0	0.00	0.00	840.0	0.0	0.0	0.0	0.00	0.00	0.00
880.0	0.00	0.00	880.0	0.0	0.0	0.0	0.00	0.00	0.00
900.0	0.00	0.00	900.0	0.0	0.0	0.0	0.00	0.00	0.00
8 5/8"									
920.0	0.00	0.00	920.0	0.0	0.0	0.0	0.00	0.00	0.00
960.0	0.00	0.00	960.0	0.0	0.0	0.0	0.00	0.00	0.00
1,000.0	0.00	0.00	1,000.0	0.0	0.0	0.0	0.00	0.00	0.00
1,040.0	0.00	0.00	1,040.0	0.0	0.0	0.0	0.00	0.00	0.00
1,080.0	0.00	0.00	1,080.0	0.0	0.0	0.0	0.00	0.00	0.00
1,120.0	0.00	0.00	1,120.0	0.0	0.0	0.0	0.00	0.00	0.00
1,160.0	0.00	0.00	1,160.0	0.0	0.0	0.0	0.00	0.00	0.00
1,200.0	0.00	0.00	1,200.0	0.0	0.0	0.0	0.00	0.00	0.00
1,240.0	0.80	192.25	1,240.0	-0.3	-0.1	0.3	2.00	2.00	0.00
1,280.0	1.60	192.25	1,280.0	-1.1	-0.2	1.1	2.00	2.00	0.00
1,320.0	2.40	192.25	1,320.0	-2.5	-0.5	2.5	2.00	2.00	0.00
1,360.0	3.20	192.25	1,359.9	-4.4	-0.9	4.5	2.00	2.00	0.00
1,400.0	4.00	192.25	1,399.8	-6.8	-1.5	7.0	2.00	2.00	0.00
1,440.0	4.80	192.25	1,439.7	-9.8	-2.1	10.0	2.00	2.00	0.00
1,480.0	5.60	192.25	1,479.6	-13.4	-2.9	13.7	2.00	2.00	0.00
1,520.0	6.40	192.25	1,519.3	-17.4	-3.8	17.9	2.00	2.00	0.00
1,560.0	7.20	192.25	1,559.1	-22.1	-4.8	22.6	2.00	2.00	0.00
1,600.0	8.00	192.25	1,598.7	-27.2	-5.9	27.9	2.00	2.00	0.00
1,640.0	8.80	192.25	1,638.3	-33.0	-7.2	33.7	2.00	2.00	0.00
1,680.0	9.60	192.25	1,677.8	-39.2	-8.5	40.1	2.00	2.00	0.00
1,720.0	10.40	192.25	1,717.1	-46.0	-10.0	47.1	2.00	2.00	0.00
1,760.0	11.20	192.25	1,756.4	-53.3	-11.6	54.6	2.00	2.00	0.00
1,800.0	12.00	192.25	1,795.6	-61.2	-13.3	62.6	2.00	2.00	0.00
1,840.0	12.80	192.25	1,834.7	-69.6	-15.1	71.2	2.00	2.00	0.00
1,880.0	13.60	192.25	1,873.6	-78.5	-17.0	80.3	2.00	2.00	0.00
1,920.0	14.40	192.25	1,912.4	-88.0	-19.1	90.0	2.00	2.00	0.00
1,928.0	14.56	192.25	1,920.2	-89.9	-19.5	92.0	2.00	2.00	0.00
1,960.0	14.56	192.25	1,951.2	-97.8	-21.2	100.0	0.00	0.00	0.00
2,000.0	14.56	192.25	1,989.9	-107.6	-23.4	110.1	0.00	0.00	0.00

Database:	Landmark	Local Co-ordinate Reference:	Well SRC Pratt 29SD
Company:	Synergy Resources	TVD Reference:	WELL @ 5224.0ft (Original Well Elev)
Project:	SEC.29-T1N-R68W	MD Reference:	WELL @ 5224.0ft (Original Well Elev)
Site:	SRC Pratt 41-29D Pad Sec.29-T1N-R68W	North Reference:	True
Well:	SRC Pratt 29SD	Survey Calculation Method:	Minimum Curvature
Wellbore:	Wellbore #1		
Design:	Plan #1 (3-01-11)		

Planned Survey									
Measured Depth (ft)	Inclination (°)	Azimuth (°)	Vertical Depth (ft)	+N/-S (ft)	+E/-W (ft)	Vertical Section (ft)	Dogleg Rate (°/100ft)	Build Rate (°/100ft)	Turn Rate (°/100ft)
2,040.0	14.56	192.25	2,028.6	-117.4	-25.5	120.2	0.00	0.00	0.00
2,080.0	14.56	192.25	2,067.3	-127.3	-27.6	130.2	0.00	0.00	0.00
2,120.0	14.56	192.25	2,106.0	-137.1	-29.8	140.3	0.00	0.00	0.00
2,160.0	14.56	192.25	2,144.7	-146.9	-31.9	150.3	0.00	0.00	0.00
2,200.0	14.56	192.25	2,183.5	-156.7	-34.0	160.4	0.00	0.00	0.00
2,240.0	14.56	192.25	2,222.2	-166.6	-36.2	170.4	0.00	0.00	0.00
2,280.0	14.56	192.25	2,260.9	-176.4	-38.3	180.5	0.00	0.00	0.00
2,320.0	14.56	192.25	2,299.6	-186.2	-40.4	190.6	0.00	0.00	0.00
2,360.0	14.56	192.25	2,338.3	-196.0	-42.6	200.6	0.00	0.00	0.00
2,400.0	14.56	192.25	2,377.0	-205.9	-44.7	210.7	0.00	0.00	0.00
2,440.0	14.56	192.25	2,415.7	-215.7	-46.8	220.7	0.00	0.00	0.00
2,480.0	14.56	192.25	2,454.5	-225.5	-49.0	230.8	0.00	0.00	0.00
2,520.0	14.56	192.25	2,493.2	-235.4	-51.1	240.8	0.00	0.00	0.00
2,560.0	14.56	192.25	2,531.9	-245.2	-53.2	250.9	0.00	0.00	0.00
2,600.0	14.56	192.25	2,570.6	-255.0	-55.4	260.9	0.00	0.00	0.00
2,640.0	14.56	192.25	2,609.3	-264.8	-57.5	271.0	0.00	0.00	0.00
2,680.0	14.56	192.25	2,648.0	-274.7	-59.6	281.1	0.00	0.00	0.00
2,720.0	14.56	192.25	2,686.8	-284.5	-61.8	291.1	0.00	0.00	0.00
2,760.0	14.56	192.25	2,725.5	-294.3	-63.9	301.2	0.00	0.00	0.00
2,800.0	14.56	192.25	2,764.2	-304.1	-66.0	311.2	0.00	0.00	0.00
2,840.0	14.56	192.25	2,802.9	-314.0	-68.2	321.3	0.00	0.00	0.00
2,880.0	14.56	192.25	2,841.6	-323.8	-70.3	331.3	0.00	0.00	0.00
2,920.0	14.56	192.25	2,880.3	-333.6	-72.4	341.4	0.00	0.00	0.00
2,960.0	14.56	192.25	2,919.0	-343.5	-74.6	351.5	0.00	0.00	0.00
3,000.0	14.56	192.25	2,957.8	-353.3	-76.7	361.5	0.00	0.00	0.00
3,040.0	14.56	192.25	2,996.5	-363.1	-78.8	371.6	0.00	0.00	0.00
3,080.0	14.56	192.25	3,035.2	-372.9	-81.0	381.6	0.00	0.00	0.00
3,120.0	14.56	192.25	3,073.9	-382.8	-83.1	391.7	0.00	0.00	0.00
3,160.0	14.56	192.25	3,112.6	-392.6	-85.2	401.7	0.00	0.00	0.00
3,200.0	14.56	192.25	3,151.3	-402.4	-87.4	411.8	0.00	0.00	0.00
3,240.0	14.56	192.25	3,190.1	-412.2	-89.5	421.8	0.00	0.00	0.00
3,280.0	14.56	192.25	3,228.8	-422.1	-91.6	431.9	0.00	0.00	0.00
3,320.0	14.56	192.25	3,267.5	-431.9	-93.8	442.0	0.00	0.00	0.00
3,360.0	14.56	192.25	3,306.2	-441.7	-95.9	452.0	0.00	0.00	0.00
3,400.0	14.56	192.25	3,344.9	-451.6	-98.0	462.1	0.00	0.00	0.00
3,440.0	14.56	192.25	3,383.6	-461.4	-100.2	472.1	0.00	0.00	0.00
3,480.0	14.56	192.25	3,422.3	-471.2	-102.3	482.2	0.00	0.00	0.00
3,520.0	14.56	192.25	3,461.1	-481.0	-104.4	492.2	0.00	0.00	0.00
3,560.0	14.56	192.25	3,499.8	-490.9	-106.6	502.3	0.00	0.00	0.00
3,600.0	14.56	192.25	3,538.5	-500.7	-108.7	512.4	0.00	0.00	0.00
3,640.0	14.56	192.25	3,577.2	-510.5	-110.8	522.4	0.00	0.00	0.00
3,680.0	14.56	192.25	3,615.9	-520.3	-113.0	532.5	0.00	0.00	0.00
3,720.0	14.56	192.25	3,654.6	-530.2	-115.1	542.5	0.00	0.00	0.00
3,760.0	14.56	192.25	3,693.3	-540.0	-117.2	552.6	0.00	0.00	0.00
3,800.0	14.56	192.25	3,732.1	-549.8	-119.4	562.6	0.00	0.00	0.00
3,840.0	14.56	192.25	3,770.8	-559.7	-121.5	572.7	0.00	0.00	0.00
3,880.0	14.56	192.25	3,809.5	-569.5	-123.6	582.7	0.00	0.00	0.00
3,920.0	14.56	192.25	3,848.2	-579.3	-125.8	592.8	0.00	0.00	0.00
3,960.0	14.56	192.25	3,886.9	-589.1	-127.9	602.9	0.00	0.00	0.00
4,000.0	14.56	192.25	3,925.6	-599.0	-130.0	612.9	0.00	0.00	0.00
4,040.0	14.56	192.25	3,964.4	-608.8	-132.2	623.0	0.00	0.00	0.00
4,080.0	14.56	192.25	4,003.1	-618.6	-134.3	633.0	0.00	0.00	0.00
4,120.0	14.56	192.25	4,041.8	-628.4	-136.4	643.1	0.00	0.00	0.00
4,160.0	14.56	192.25	4,080.5	-638.3	-138.6	653.1	0.00	0.00	0.00

Database:	Landmark	Local Co-ordinate Reference:	Well SRC Pratt 29SD
Company:	Synergy Resources	TVD Reference:	WELL @ 5224.0ft (Original Well Elev)
Project:	SEC.29-T1N-R68W	MD Reference:	WELL @ 5224.0ft (Original Well Elev)
Site:	SRC Pratt 41-29D Pad Sec.29-T1N-R68W	North Reference:	True
Well:	SRC Pratt 29SD	Survey Calculation Method:	Minimum Curvature
Wellbore:	Wellbore #1		
Design:	Plan #1 (3-01-11)		

Planned Survey									
Measured Depth (ft)	Inclination (°)	Azimuth (°)	Vertical Depth (ft)	+N/-S (ft)	+E/-W (ft)	Vertical Section (ft)	Dogleg Rate (°/100ft)	Build Rate (°/100ft)	Turn Rate (°/100ft)
4,200.0	14.56	192.25	4,119.2	-648.1	-140.7	663.2	0.00	0.00	0.00
4,240.0	14.56	192.25	4,157.9	-657.9	-142.8	673.3	0.00	0.00	0.00
4,280.0	14.56	192.25	4,196.6	-667.8	-145.0	683.3	0.00	0.00	0.00
4,320.0	14.56	192.25	4,235.4	-677.6	-147.1	693.4	0.00	0.00	0.00
4,360.0	14.56	192.25	4,274.1	-687.4	-149.2	703.4	0.00	0.00	0.00
4,400.0	14.56	192.25	4,312.8	-697.2	-151.4	713.5	0.00	0.00	0.00
4,440.0	14.56	192.25	4,351.5	-707.1	-153.5	723.5	0.00	0.00	0.00
4,480.0	14.56	192.25	4,390.2	-716.9	-155.6	733.6	0.00	0.00	0.00
4,520.0	14.56	192.25	4,428.9	-726.7	-157.8	743.6	0.00	0.00	0.00
4,560.0	14.56	192.25	4,467.7	-736.6	-159.9	753.7	0.00	0.00	0.00
4,600.0	14.56	192.25	4,506.4	-746.4	-162.0	763.8	0.00	0.00	0.00
4,640.0	14.56	192.25	4,545.1	-756.2	-164.1	773.8	0.00	0.00	0.00
4,680.0	14.56	192.25	4,583.8	-766.0	-166.3	783.9	0.00	0.00	0.00
4,720.0	14.56	192.25	4,622.5	-775.9	-168.4	793.9	0.00	0.00	0.00
4,760.0	14.56	192.25	4,661.2	-785.7	-170.5	804.0	0.00	0.00	0.00
4,800.0	14.56	192.25	4,699.9	-795.5	-172.7	814.0	0.00	0.00	0.00
4,840.0	14.56	192.25	4,738.7	-805.3	-174.8	824.1	0.00	0.00	0.00
4,880.0	14.56	192.25	4,777.4	-815.2	-176.9	834.2	0.00	0.00	0.00
4,882.5	14.56	192.25	4,779.8	-815.8	-177.1	834.8	0.00	0.00	0.00
4,920.0	13.81	192.25	4,816.2	-824.8	-179.0	844.0	2.00	-2.00	0.00
4,960.0	13.01	192.25	4,855.1	-833.8	-181.0	853.2	2.00	-2.00	0.00
5,000.0	12.21	192.25	4,894.1	-842.4	-182.9	862.0	2.00	-2.00	0.00
5,040.0	11.41	192.25	4,933.2	-850.4	-184.6	870.2	2.00	-2.00	0.00
5,080.0	10.61	192.25	4,972.5	-857.8	-186.2	877.8	2.00	-2.00	0.00
5,120.0	9.81	192.25	5,011.9	-864.8	-187.7	884.9	2.00	-2.00	0.00
5,160.0	9.01	192.25	5,051.3	-871.1	-189.1	891.4	2.00	-2.00	0.00
5,200.0	8.21	192.25	5,090.9	-877.0	-190.4	897.4	2.00	-2.00	0.00
5,240.0	7.41	192.25	5,130.5	-882.3	-191.5	902.9	2.00	-2.00	0.00
5,280.0	6.61	192.25	5,170.2	-887.1	-192.6	907.7	2.00	-2.00	0.00
5,320.0	5.81	192.25	5,210.0	-891.3	-193.5	912.1	2.00	-2.00	0.00
5,360.0	5.01	192.25	5,249.8	-895.0	-194.3	915.8	2.00	-2.00	0.00
5,400.0	4.21	192.25	5,289.7	-898.1	-195.0	919.1	2.00	-2.00	0.00
5,440.0	3.41	192.25	5,329.6	-900.7	-195.5	921.7	2.00	-2.00	0.00
5,480.0	2.61	192.25	5,369.5	-902.8	-196.0	923.8	2.00	-2.00	0.00
5,520.0	1.81	192.25	5,409.5	-904.3	-196.3	925.4	2.00	-2.00	0.00
5,560.0	1.01	192.25	5,449.5	-905.3	-196.5	926.3	2.00	-2.00	0.00
5,600.0	0.21	192.25	5,489.5	-905.7	-196.6	926.8	2.00	-2.00	0.00
5,610.5	0.00	0.00	5,500.0	-905.7	-196.6	926.8	2.00	-2.00	1,595.52
DRILL TARGET BHL 2579'FNL, 1314'FEL									
5,640.0	0.00	0.00	5,529.5	-905.7	-196.6	926.8	0.00	0.00	0.00
5,680.0	0.00	0.00	5,569.5	-905.7	-196.6	926.8	0.00	0.00	0.00
5,720.0	0.00	0.00	5,609.5	-905.7	-196.6	926.8	0.00	0.00	0.00
5,760.0	0.00	0.00	5,649.5	-905.7	-196.6	926.8	0.00	0.00	0.00
5,800.0	0.00	0.00	5,689.5	-905.7	-196.6	926.8	0.00	0.00	0.00
5,840.0	0.00	0.00	5,729.5	-905.7	-196.6	926.8	0.00	0.00	0.00
5,880.0	0.00	0.00	5,769.5	-905.7	-196.6	926.8	0.00	0.00	0.00
5,910.5	0.00	0.00	5,800.0	-905.7	-196.6	926.8	0.00	0.00	0.00
PERMIT TARGET BHL 2654'FNL, 1314'FEL									
5,920.0	0.00	0.00	5,809.5	-905.7	-196.6	926.8	0.00	0.00	0.00
5,960.0	0.00	0.00	5,849.5	-905.7	-196.6	926.8	0.00	0.00	0.00
6,000.0	0.00	0.00	5,889.5	-905.7	-196.6	926.8	0.00	0.00	0.00
6,040.0	0.00	0.00	5,929.5	-905.7	-196.6	926.8	0.00	0.00	0.00
6,080.0	0.00	0.00	5,969.5	-905.7	-196.6	926.8	0.00	0.00	0.00
6,120.0	0.00	0.00	6,009.5	-905.7	-196.6	926.8	0.00	0.00	0.00

Database:	Landmark	Local Co-ordinate Reference:	Well SRC Pratt 29SD
Company:	Synergy Resources	TVD Reference:	WELL @ 5224.0ft (Original Well Elev)
Project:	SEC.29-T1N-R68W	MD Reference:	WELL @ 5224.0ft (Original Well Elev)
Site:	SRC Pratt 41-29D Pad Sec.29-T1N-R68W	North Reference:	True
Well:	SRC Pratt 29SD	Survey Calculation Method:	Minimum Curvature
Wellbore:	Wellbore #1		
Design:	Plan #1 (3-01-11)		

Planned Survey									
Measured Depth (ft)	Inclination (°)	Azimuth (°)	Vertical Depth (ft)	+N/-S (ft)	+E/-W (ft)	Vertical Section (ft)	Dogleg Rate (°/100ft)	Build Rate (°/100ft)	Turn Rate (°/100ft)
6,160.0	0.00	0.00	6,049.5	-905.7	-196.6	926.8	0.00	0.00	0.00
6,200.0	0.00	0.00	6,089.5	-905.7	-196.6	926.8	0.00	0.00	0.00
6,240.0	0.00	0.00	6,129.5	-905.7	-196.6	926.8	0.00	0.00	0.00
6,280.0	0.00	0.00	6,169.5	-905.7	-196.6	926.8	0.00	0.00	0.00
6,320.0	0.00	0.00	6,209.5	-905.7	-196.6	926.8	0.00	0.00	0.00
6,360.0	0.00	0.00	6,249.5	-905.7	-196.6	926.8	0.00	0.00	0.00
6,400.0	0.00	0.00	6,289.5	-905.7	-196.6	926.8	0.00	0.00	0.00
6,440.0	0.00	0.00	6,329.5	-905.7	-196.6	926.8	0.00	0.00	0.00
6,480.0	0.00	0.00	6,369.5	-905.7	-196.6	926.8	0.00	0.00	0.00
6,520.0	0.00	0.00	6,409.5	-905.7	-196.6	926.8	0.00	0.00	0.00
6,560.0	0.00	0.00	6,449.5	-905.7	-196.6	926.8	0.00	0.00	0.00
6,600.0	0.00	0.00	6,489.5	-905.7	-196.6	926.8	0.00	0.00	0.00
6,640.0	0.00	0.00	6,529.5	-905.7	-196.6	926.8	0.00	0.00	0.00
6,680.0	0.00	0.00	6,569.5	-905.7	-196.6	926.8	0.00	0.00	0.00
6,720.0	0.00	0.00	6,609.5	-905.7	-196.6	926.8	0.00	0.00	0.00
6,760.0	0.00	0.00	6,649.5	-905.7	-196.6	926.8	0.00	0.00	0.00
6,800.0	0.00	0.00	6,689.5	-905.7	-196.6	926.8	0.00	0.00	0.00
6,840.0	0.00	0.00	6,729.5	-905.7	-196.6	926.8	0.00	0.00	0.00
6,880.0	0.00	0.00	6,769.5	-905.7	-196.6	926.8	0.00	0.00	0.00
6,920.0	0.00	0.00	6,809.5	-905.7	-196.6	926.8	0.00	0.00	0.00
6,960.0	0.00	0.00	6,849.5	-905.7	-196.6	926.8	0.00	0.00	0.00
7,000.0	0.00	0.00	6,889.5	-905.7	-196.6	926.8	0.00	0.00	0.00
7,040.0	0.00	0.00	6,929.5	-905.7	-196.6	926.8	0.00	0.00	0.00
7,080.0	0.00	0.00	6,969.5	-905.7	-196.6	926.8	0.00	0.00	0.00
7,120.0	0.00	0.00	7,009.5	-905.7	-196.6	926.8	0.00	0.00	0.00
7,160.0	0.00	0.00	7,049.5	-905.7	-196.6	926.8	0.00	0.00	0.00
7,200.0	0.00	0.00	7,089.5	-905.7	-196.6	926.8	0.00	0.00	0.00
7,240.0	0.00	0.00	7,129.5	-905.7	-196.6	926.8	0.00	0.00	0.00
7,280.0	0.00	0.00	7,169.5	-905.7	-196.6	926.8	0.00	0.00	0.00
7,320.0	0.00	0.00	7,209.5	-905.7	-196.6	926.8	0.00	0.00	0.00
7,360.0	0.00	0.00	7,249.5	-905.7	-196.6	926.8	0.00	0.00	0.00
7,400.0	0.00	0.00	7,289.5	-905.7	-196.6	926.8	0.00	0.00	0.00
7,440.0	0.00	0.00	7,329.5	-905.7	-196.6	926.8	0.00	0.00	0.00
7,480.0	0.00	0.00	7,369.5	-905.7	-196.6	926.8	0.00	0.00	0.00
7,520.0	0.00	0.00	7,409.5	-905.7	-196.6	926.8	0.00	0.00	0.00
7,560.0	0.00	0.00	7,449.5	-905.7	-196.6	926.8	0.00	0.00	0.00
7,600.0	0.00	0.00	7,489.5	-905.7	-196.6	926.8	0.00	0.00	0.00
7,640.0	0.00	0.00	7,529.5	-905.7	-196.6	926.8	0.00	0.00	0.00
7,680.0	0.00	0.00	7,569.5	-905.7	-196.6	926.8	0.00	0.00	0.00
7,720.0	0.00	0.00	7,609.5	-905.7	-196.6	926.8	0.00	0.00	0.00
7,760.0	0.00	0.00	7,649.5	-905.7	-196.6	926.8	0.00	0.00	0.00
7,800.0	0.00	0.00	7,689.5	-905.7	-196.6	926.8	0.00	0.00	0.00
7,840.0	0.00	0.00	7,729.5	-905.7	-196.6	926.8	0.00	0.00	0.00
7,880.0	0.00	0.00	7,769.5	-905.7	-196.6	926.8	0.00	0.00	0.00
7,920.0	0.00	0.00	7,809.5	-905.7	-196.6	926.8	0.00	0.00	0.00
7,960.0	0.00	0.00	7,849.5	-905.7	-196.6	926.8	0.00	0.00	0.00
8,000.0	0.00	0.00	7,889.5	-905.7	-196.6	926.8	0.00	0.00	0.00
8,040.0	0.00	0.00	7,929.5	-905.7	-196.6	926.8	0.00	0.00	0.00
8,080.0	0.00	0.00	7,969.5	-905.7	-196.6	926.8	0.00	0.00	0.00
8,120.0	0.00	0.00	8,009.5	-905.7	-196.6	926.8	0.00	0.00	0.00
8,160.0	0.00	0.00	8,049.5	-905.7	-196.6	926.8	0.00	0.00	0.00
8,200.0	0.00	0.00	8,089.5	-905.7	-196.6	926.8	0.00	0.00	0.00
8,240.0	0.00	0.00	8,129.5	-905.7	-196.6	926.8	0.00	0.00	0.00
8,280.0	0.00	0.00	8,169.5	-905.7	-196.6	926.8	0.00	0.00	0.00

Planned Survey										
Measured Depth (ft)	Inclination (°)	Azimuth (°)	Vertical Depth (ft)	+N/-S (ft)	+E/-W (ft)	Vertical Section (ft)	Dogleg Rate (°/100ft)	Build Rate (°/100ft)	Turn Rate (°/100ft)	
8,320.0	0.00	0.00	8,209.5	-905.7	-196.6	926.8	0.00	0.00	0.00	
8,360.0	0.00	0.00	8,249.5	-905.7	-196.6	926.8	0.00	0.00	0.00	
8,400.0	0.00	0.00	8,289.5	-905.7	-196.6	926.8	0.00	0.00	0.00	
8,440.0	0.00	0.00	8,329.5	-905.7	-196.6	926.8	0.00	0.00	0.00	
8,480.0	0.00	0.00	8,369.5	-905.7	-196.6	926.8	0.00	0.00	0.00	
8,520.0	0.00	0.00	8,409.5	-905.7	-196.6	926.8	0.00	0.00	0.00	
8,560.0	0.00	0.00	8,449.5	-905.7	-196.6	926.8	0.00	0.00	0.00	
8,600.0	0.00	0.00	8,489.5	-905.7	-196.6	926.8	0.00	0.00	0.00	
8,640.0	0.00	0.00	8,529.5	-905.7	-196.6	926.8	0.00	0.00	0.00	
8,680.0	0.00	0.00	8,569.5	-905.7	-196.6	926.8	0.00	0.00	0.00	
8,690.5	0.00	0.00	8,580.0	-905.7	-196.6	926.8	0.00	0.00	0.00	
HARD LINES 75'S OF DRILL TARGET BHL										

Targets									
Target Name - hit/miss target - Shape	Dip Angle (°)	Dip Dir. (°)	TVD (ft)	+N/-S (ft)	+E/-W (ft)	Northing (ft)	Easting (ft)	Latitude	Longitude
DRILL TARGET BHL - plan hits target center - Point	0.00	0.00	5,500.0	-905.7	-196.6	1,251,304.75	3,133,618.47	40.022232	-105.022895
HARD LINES 75'S OF - plan misses target center by 125.0ft at 8690.5ft MD (8580.0 TVD, -905.7 N, -196.6 E) - Polygon	0.00	0.00	8,580.0	-980.7	-296.6	1,251,229.21	3,133,518.88	40.022026	-105.023252
Point 1			8,580.0	0.0	0.0	1,251,229.21	3,133,518.88		
Point 2			8,580.0	0.0	200.0	1,251,230.29	3,133,718.87		
PERMIT TARGET BH - plan misses target center by 75.0ft at 5910.5ft MD (5800.0 TVD, -905.7 N, -196.6 E) - Point	0.00	0.00	5,800.0	-980.7	-196.6	1,251,229.80	3,133,618.87	40.022026	-105.022895

Casing Points						
Measured Depth (ft)	Vertical Depth (ft)			Name	Casing Diameter (")	Hole Diameter (")
900.0	900.0	8 5/8"			8-5/8	12-1/4



Directional

Synergy Resources

SEC.29-T1N-R68W

SRC Pratt 41-29D Pad Sec.29-T1N-R68W

SRC Pratt 29SD

Wellbore #1

Plan #1 (3-01-11)

Anticollision Report

01 March, 2011

Company:	Synergy Resources	Local Co-ordinate Reference:	Well SRC Pratt 29SD
Project:	SEC.29-T1N-R68W	TVD Reference:	WELL @ 5224.0ft (Original Well Elev)
Reference Site:	SRC Pratt 41-29D Pad Sec.29-T1N-R68W	MD Reference:	WELL @ 5224.0ft (Original Well Elev)
Site Error:	0.0ft	North Reference:	True
Reference Well:	SRC Pratt 29SD	Survey Calculation Method:	Minimum Curvature
Well Error:	0.0ft	Output errors are at	2.00 sigma
Reference Wellbore	Wellbore #1	Database:	Landmark
Reference Design:	Plan #1 (3-01-11)	Offset TVD Reference:	Offset Datum

Offset Design												Offset Site Error:	0.0ft
Survey Program: 0-MWD												Offset Well Error:	0.0ft
Reference		Offset		Semi Major Axis			Distance						Warning
Measured Depth (ft)	Vertical Depth (ft)	Measured Depth (ft)	Vertical Depth (ft)	Reference (ft)	Offset (ft)	Highside Toolface (°)	Offset Wellbore Centre +N/-S (ft)	+E/-W (ft)	Between Centres (ft)	Between Ellipses (ft)	Minimum Separation (ft)	Separation Factor	
2,000.0	1,989.9	1,918.6	1,857.6	4.6	9.1	52.07	-251.1	-369.0	396.3	386.8	9.46	41.893	
2,100.0	2,086.7	2,015.7	1,949.1	5.0	9.8	54.23	-268.1	-396.5	414.8	404.6	10.21	40.649	
2,200.0	2,183.5	2,112.8	2,040.7	5.4	10.5	56.21	-285.0	-423.9	433.9	422.9	11.00	39.452	
2,300.0	2,280.2	2,209.8	2,132.2	5.8	11.2	58.03	-301.9	-451.4	453.5	441.7	11.83	38.322	
2,400.0	2,377.0	2,306.9	2,223.8	6.3	11.8	59.69	-318.8	-478.9	473.5	460.8	12.70	37.270	
2,500.0	2,473.8	2,404.0	2,315.3	6.7	12.5	61.22	-335.8	-506.4	493.8	480.2	13.60	36.299	
2,600.0	2,570.6	2,501.0	2,406.9	7.2	13.2	62.64	-352.7	-533.9	514.5	500.0	14.53	35.409	
2,700.0	2,667.4	2,598.1	2,498.4	7.7	13.9	63.94	-369.6	-561.4	535.4	519.9	15.48	34.596	
2,800.0	2,764.2	2,695.2	2,590.0	8.2	14.6	65.15	-386.5	-588.9	556.6	540.2	16.44	33.855	
2,900.0	2,861.0	2,792.3	2,681.5	8.7	15.2	66.26	-403.5	-616.3	578.0	560.6	17.42	33.180	
3,000.0	2,957.8	2,889.3	2,773.1	9.2	15.9	67.30	-420.4	-643.8	599.6	581.2	18.41	32.564	
3,100.0	3,054.5	2,986.4	2,864.6	9.7	16.6	68.27	-437.3	-671.3	621.4	602.0	19.42	32.003	
3,200.0	3,151.3	3,083.5	2,956.2	10.2	17.3	69.17	-454.2	-698.8	643.3	622.9	20.43	31.490	
3,300.0	3,248.1	3,180.6	3,047.7	10.7	18.0	70.02	-471.2	-726.3	665.4	644.0	21.45	31.021	
3,400.0	3,344.9	3,277.6	3,139.3	11.2	18.6	70.81	-488.1	-753.8	687.6	665.2	22.48	30.591	
3,500.0	3,441.7	3,374.7	3,230.8	11.7	19.3	71.55	-505.0	-781.3	710.0	686.4	23.51	30.196	
3,600.0	3,538.5	3,471.8	3,322.4	12.2	20.0	72.24	-521.9	-808.8	732.4	707.8	24.55	29.832	
3,700.0	3,635.3	3,568.9	3,413.9	12.7	20.7	72.90	-538.9	-836.2	754.9	729.3	25.59	29.497	
3,800.0	3,732.1	3,665.9	3,505.5	13.3	21.4	73.51	-555.8	-863.7	777.6	750.9	26.64	29.188	
3,900.0	3,828.9	3,763.0	3,597.0	13.8	22.0	74.09	-572.7	-891.2	800.3	772.6	27.69	28.901	
4,000.0	3,925.6	3,860.1	3,688.6	14.3	22.7	74.64	-589.6	-918.7	823.0	794.3	28.74	28.635	
4,100.0	4,022.4	3,957.2	3,780.1	14.8	23.4	75.16	-606.6	-946.2	845.9	816.1	29.80	28.387	
4,200.0	4,119.2	4,054.2	3,871.7	15.3	24.1	75.66	-623.5	-973.7	868.8	837.9	30.86	28.157	
4,300.0	4,216.0	4,151.3	3,963.2	15.8	24.8	76.13	-640.4	-1,001.2	891.8	859.8	31.91	27.942	
4,400.0	4,312.8	4,248.4	4,054.8	16.4	25.4	76.57	-657.3	-1,028.7	914.8	881.8	32.98	27.741	
4,500.0	4,409.6	4,345.4	4,146.3	16.9	26.1	76.99	-674.3	-1,056.1	937.8	903.8	34.04	27.553	
4,600.0	4,506.4	4,442.5	4,237.9	17.4	26.8	77.39	-691.2	-1,083.6	961.0	925.9	35.10	27.377	
4,700.0	4,603.2	4,539.6	4,329.4	17.9	27.5	77.78	-708.1	-1,111.1	984.1	948.0	36.17	27.211	
4,800.0	4,699.9	4,636.7	4,421.0	18.4	28.2	78.14	-725.0	-1,138.6	1,007.3	970.1	37.23	27.055	
4,882.5	4,779.8	4,716.7	4,496.5	18.9	28.7	78.43	-739.0	-1,161.3	1,026.5	988.4	38.11	26.934	
4,900.0	4,796.7	4,733.7	4,512.5	19.0	28.8	78.57	-742.0	-1,166.1	1,030.6	992.3	38.30	26.906	
5,000.0	4,894.1	4,830.8	4,604.1	19.3	29.5	79.26	-758.9	-1,193.6	1,054.3	1,015.0	39.28	26.842	
5,100.0	4,992.2	4,927.8	4,695.5	19.6	30.2	79.76	-775.8	-1,221.0	1,078.6	1,038.5	40.17	26.848	
5,200.0	5,090.9	5,024.6	4,786.8	19.9	30.9	80.09	-792.7	-1,248.5	1,103.6	1,062.6	40.99	26.922	
5,300.0	5,190.1	5,121.0	4,877.8	20.2	31.6	80.27	-809.5	-1,275.8	1,129.1	1,087.4	41.73	27.060	
5,400.0	5,289.7	5,228.2	4,978.9	20.4	32.3	80.23	-828.1	-1,306.0	1,155.2	1,112.9	42.37	27.263	
5,500.0	5,389.5	5,374.4	5,118.4	20.5	32.9	79.88	-850.9	-1,342.9	1,179.1	1,136.2	42.89	27.491	
5,600.0	5,489.5	5,523.6	5,263.0	20.7	33.5	79.44	-870.2	-1,374.4	1,199.5	1,156.3	43.28	27.714	
5,610.5	5,500.0	5,539.4	5,278.5	20.7	33.6	-88.37	-872.1	-1,377.4	1,201.5	1,158.2	43.32	27.738	
5,700.0	5,589.5	5,675.8	5,412.2	20.8	34.1	-89.06	-885.9	-1,399.9	1,216.1	1,172.6	43.51	27.947	
5,800.0	5,689.5	5,830.9	5,565.7	20.9	34.4	-89.62	-897.6	-1,418.8	1,228.3	1,184.6	43.74	28.082	
5,900.0	5,789.5	5,988.0	5,722.1	21.0	34.7	-89.96	-904.9	-1,430.8	1,235.9	1,191.9	43.98	28.101	
6,000.0	5,889.5	6,146.1	5,880.2	21.1	34.9	-90.10	-907.8	-1,435.4	1,238.8	1,194.6	44.24	28.004	
6,100.0	5,989.5	6,253.5	5,987.5	21.2	35.0	-90.10	-907.8	-1,435.5	1,238.9	1,194.4	44.46	27.864	
6,200.0	6,089.5	6,353.5	6,087.5	21.3	35.1	-90.10	-907.8	-1,435.5	1,238.9	1,194.2	44.68	27.729	
6,300.0	6,189.5	6,453.5	6,187.5	21.5	35.1	-90.10	-907.8	-1,435.5	1,238.9	1,194.0	44.90	27.593	
6,400.0	6,289.5	6,553.5	6,287.5	21.6	35.2	-90.10	-907.8	-1,435.5	1,238.9	1,193.8	45.12	27.457	
6,500.0	6,389.5	6,653.5	6,387.5	21.7	35.3	-90.10	-907.8	-1,435.5	1,238.9	1,193.5	45.35	27.320	
6,600.0	6,489.5	6,753.5	6,487.5	21.8	35.4	-90.10	-907.8	-1,435.5	1,238.9	1,193.3	45.58	27.183	
6,700.0	6,589.5	6,853.5	6,587.5	21.9	35.4	-90.10	-907.8	-1,435.5	1,238.9	1,193.1	45.81	27.044	
6,800.0	6,689.5	6,953.5	6,687.5	22.1	35.5	-90.10	-907.8	-1,435.5	1,238.9	1,192.8	46.05	26.906	
6,900.0	6,789.5	7,053.5	6,787.5	22.2	35.6	-90.10	-907.8	-1,435.5	1,238.9	1,192.6	46.28	26.767	

CC - Min centre to center distance or convergent point, SF - min separation factor, ES - min ellipse separation

Company:	Synergy Resources	Local Co-ordinate Reference:	Well SRC Pratt 29SD
Project:	SEC.29-T1N-R68W	TVD Reference:	WELL @ 5224.0ft (Original Well Elev)
Reference Site:	SRC Pratt 41-29D Pad Sec.29-T1N-R68W	MD Reference:	WELL @ 5224.0ft (Original Well Elev)
Site Error:	0.0ft	North Reference:	True
Reference Well:	SRC Pratt 29SD	Survey Calculation Method:	Minimum Curvature
Well Error:	0.0ft	Output errors are at	2.00 sigma
Reference Wellbore	Wellbore #1	Database:	Landmark
Reference Design:	Plan #1 (3-01-11)	Offset TVD Reference:	Offset Datum

Offset Design												Offset Site Error:	0.0 ft
SRC Pratt 41-29D Pad Sec.29-T1N-R68W - SRC Pratt 29OD - Wellbore #1 - Plan #1 (3-01-11)												Offset Well Error:	0.0 ft
Survey Program: 0-MWD													
Reference		Offset		Semi Major Axis			Distance						
Measured Depth (ft)	Vertical Depth (ft)	Measured Depth (ft)	Vertical Depth (ft)	Reference (ft)	Offset (ft)	Highside Toolface (°)	Offset Wellbore Centre +N/-S (ft)	+E/-W (ft)	Between Centres (ft)	Between Ellipses (ft)	Minimum Separation (ft)	Separation Factor	Warning
7,000.0	6,889.5	7,153.5	6,887.5	22.3	35.7	-90.10	-907.8	-1,435.5	1,238.9	1,192.4	46.53	26.627	
7,100.0	6,989.5	7,253.5	6,987.5	22.4	35.8	-90.10	-907.8	-1,435.5	1,238.9	1,192.1	46.77	26.488	
7,200.0	7,089.5	7,353.5	7,087.5	22.6	35.9	-90.10	-907.8	-1,435.5	1,238.9	1,191.9	47.02	26.348	
7,300.0	7,189.5	7,453.5	7,187.5	22.7	36.0	-90.10	-907.8	-1,435.5	1,238.9	1,191.6	47.27	26.208	
7,400.0	7,289.5	7,553.5	7,287.5	22.8	36.0	-90.10	-907.8	-1,435.5	1,238.9	1,191.4	47.53	26.068	
7,500.0	7,389.5	7,653.5	7,387.5	23.0	36.1	-90.10	-907.8	-1,435.5	1,238.9	1,191.1	47.78	25.927	
7,600.0	7,489.5	7,753.5	7,487.5	23.1	36.2	-90.10	-907.8	-1,435.5	1,238.9	1,190.8	48.04	25.787	
7,700.0	7,589.5	7,853.5	7,587.5	23.2	36.3	-90.10	-907.8	-1,435.5	1,238.9	1,190.6	48.31	25.647	
7,800.0	7,689.5	7,953.5	7,687.5	23.4	36.4	-90.10	-907.8	-1,435.5	1,238.9	1,190.3	48.57	25.507	
7,900.0	7,789.5	8,053.5	7,787.5	23.5	36.5	-90.10	-907.8	-1,435.5	1,238.9	1,190.0	48.84	25.367	
8,000.0	7,889.5	8,153.5	7,887.5	23.7	36.6	-90.10	-907.8	-1,435.5	1,238.9	1,189.8	49.11	25.227	
8,100.0	7,989.5	8,253.5	7,987.5	23.8	36.7	-90.10	-907.8	-1,435.5	1,238.9	1,189.5	49.38	25.087	
8,200.0	8,089.5	8,353.5	8,087.5	24.0	36.8	-90.10	-907.8	-1,435.5	1,238.9	1,189.2	49.66	24.948	
8,300.0	8,189.5	8,453.5	8,187.5	24.1	36.9	-90.10	-907.8	-1,435.5	1,238.9	1,188.9	49.94	24.809	
8,400.0	8,289.5	8,553.5	8,287.5	24.2	37.0	-90.10	-907.8	-1,435.5	1,238.9	1,188.7	50.22	24.670	
8,500.0	8,389.5	8,653.5	8,387.5	24.4	37.1	-90.10	-907.8	-1,435.5	1,238.9	1,188.4	50.50	24.532	
8,600.0	8,489.5	8,753.5	8,487.5	24.5	37.2	-90.10	-907.8	-1,435.5	1,238.9	1,188.1	50.79	24.394	
8,690.5	8,580.0	8,844.0	8,578.0	24.7	37.3	-90.10	-907.8	-1,435.5	1,238.9	1,187.8	51.05	24.269 SF	

Company:	Synergy Resources	Local Co-ordinate Reference:	Well SRC Pratt 29SD
Project:	SEC.29-T1N-R68W	TVD Reference:	WELL @ 5224.0ft (Original Well Elev)
Reference Site:	SRC Pratt 41-29D Pad Sec.29-T1N-R68W	MD Reference:	WELL @ 5224.0ft (Original Well Elev)
Site Error:	0.0ft	North Reference:	True
Reference Well:	SRC Pratt 29SD	Survey Calculation Method:	Minimum Curvature
Well Error:	0.0ft	Output errors are at	2.00 sigma
Reference Wellbore	Wellbore #1	Database:	Landmark
Reference Design:	Plan #1 (3-01-11)	Offset TVD Reference:	Offset Datum

Offset Design													Offset Site Error:	0.0ft
Survey Program: 0-MWD													Offset Well Error:	0.0ft
Reference		Offset		Semi Major Axis			Distance							Warning
Measured Depth (ft)	Vertical Depth (ft)	Measured Depth (ft)	Vertical Depth (ft)	Reference (ft)	Offset (ft)	Highside Toolface (°)	Offset Wellbore Centre +N/-S (ft)	+E/-W (ft)	Between Centres (ft)	Between Ellipses (ft)	Minimum Separation (ft)	Separation Factor		
0.0	0.0	1.0	1.0	0.0	0.0	28.08	17.9	9.5	20.2					
100.0	100.0	101.0	101.0	0.1	0.1	28.08	17.9	9.5	20.2	20.0	0.20	102.284		
200.0	200.0	201.0	201.0	0.3	0.3	28.08	17.9	9.5	20.2	19.6	0.65	31.256		
277.9	277.9	278.9	278.9	0.5	0.5	25.00	18.3	8.5	20.2	19.2	0.99	20.333 CC		
300.0	300.0	301.0	301.0	0.5	0.5	23.03	18.6	7.9	20.2	19.1	1.09	18.512 ES		
400.0	400.0	400.7	400.6	0.8	0.8	8.60	20.8	3.2	21.1	19.5	1.55	13.622		
500.0	500.0	500.0	499.5	1.0	1.0	-10.40	24.7	-4.5	25.1	23.1	2.02	12.445 SF		
600.0	600.0	598.2	597.0	1.2	1.3	-24.20	31.2	-14.0	34.4	32.0	2.48	13.859		
700.0	700.0	695.7	693.4	1.4	1.6	-31.81	40.5	-25.1	48.3	45.3	2.95	16.380		
800.0	800.0	792.1	788.2	1.7	2.0	-35.72	52.5	-37.8	65.9	62.5	3.41	19.328		
900.0	900.0	887.3	881.2	1.9	2.4	-37.70	67.0	-51.8	87.0	83.1	3.88	22.431		
1,000.0	1,000.0	981.1	972.2	2.1	2.8	-38.67	83.9	-67.2	111.3	107.0	4.35	25.577		
1,100.0	1,100.0	1,076.7	1,064.3	2.3	3.3	-39.17	103.0	-83.9	137.8	133.0	4.83	28.525		
1,200.0	1,200.0	1,173.1	1,157.2	2.6	3.8	-39.50	122.3	-100.8	164.4	159.1	5.31	30.952		
1,300.0	1,300.0	1,269.2	1,249.9	2.8	4.3	127.98	141.5	-117.7	192.1	186.3	5.79	33.198		
1,400.0	1,399.8	1,364.6	1,341.9	2.9	4.8	128.37	160.6	-134.4	221.8	215.6	6.21	35.710		
1,500.0	1,499.5	1,459.2	1,433.1	3.1	5.3	129.16	179.6	-151.0	253.7	247.0	6.64	38.179		
1,600.0	1,598.7	1,553.0	1,523.4	3.3	5.8	130.18	198.3	-167.5	287.8	280.7	7.09	40.596		
1,700.0	1,697.5	1,645.7	1,612.8	3.6	6.3	131.32	216.9	-183.8	324.2	316.7	7.55	42.958		
1,800.0	1,795.6	1,737.3	1,701.1	3.9	6.8	132.51	235.2	-199.8	363.0	355.0	8.02	45.259		
1,900.0	1,893.1	1,827.6	1,788.2	4.2	7.3	133.70	253.3	-215.7	404.4	395.8	8.51	47.495		
1,928.0	1,920.2	1,852.7	1,812.4	4.3	7.5	134.02	258.4	-220.1	416.4	407.7	8.65	48.110		
2,000.0	1,989.9	1,917.0	1,874.3	4.6	7.8	135.27	271.2	-231.4	447.6	438.6	9.06	49.390		
2,100.0	2,086.7	2,006.3	1,960.4	5.0	8.3	136.73	289.1	-247.1	491.3	481.6	9.64	50.938		
2,200.0	2,183.5	2,095.6	2,046.5	5.4	8.8	137.96	307.0	-262.7	535.1	524.9	10.24	52.266		
2,300.0	2,280.2	2,184.9	2,132.6	5.8	9.3	139.00	324.9	-278.4	579.2	568.3	10.84	53.417		
2,400.0	2,377.0	2,274.2	2,218.7	6.3	9.8	139.90	342.7	-294.1	623.3	611.9	11.45	54.424		
2,500.0	2,473.8	2,363.6	2,304.8	6.7	10.3	140.68	360.6	-309.8	667.6	655.6	12.07	55.312		
2,600.0	2,570.6	2,452.9	2,390.9	7.2	10.8	141.36	378.5	-325.4	712.0	699.3	12.69	56.100		
2,700.0	2,667.4	2,542.2	2,477.0	7.7	11.3	141.97	396.4	-341.1	756.4	743.1	13.32	56.804		
2,800.0	2,764.2	2,631.5	2,563.1	8.2	11.8	142.50	414.3	-356.8	800.9	787.0	13.94	57.437		
2,900.0	2,861.0	2,720.8	2,649.1	8.7	12.3	142.98	432.1	-372.5	845.5	830.9	14.58	58.008		
3,000.0	2,957.8	2,810.1	2,735.2	9.2	12.8	143.42	450.0	-388.1	890.1	874.9	15.21	58.526		
3,100.0	3,054.5	2,899.4	2,821.3	9.7	13.3	143.81	467.9	-403.8	934.7	918.9	15.84	58.999		
3,200.0	3,151.3	2,988.8	2,907.4	10.2	13.8	144.16	485.8	-419.5	979.4	962.9	16.48	59.430		
3,300.0	3,248.1	3,078.1	2,993.5	10.7	14.3	144.49	503.6	-435.2	1,024.1	1,006.9	17.12	59.827		
3,400.0	3,344.9	3,167.4	3,079.6	11.2	14.8	144.79	521.5	-450.8	1,068.8	1,051.0	17.76	60.192		
3,500.0	3,441.7	3,256.7	3,165.7	11.7	15.3	145.06	539.4	-466.5	1,113.5	1,095.1	18.40	60.530		
3,600.0	3,538.5	3,346.0	3,251.8	12.2	15.8	145.31	557.3	-482.2	1,158.3	1,139.2	19.04	60.842		
3,700.0	3,635.3	3,435.3	3,337.9	12.7	16.3	145.55	575.2	-497.9	1,203.0	1,183.4	19.68	61.132		
3,800.0	3,732.1	3,524.6	3,424.0	13.3	16.8	145.76	593.0	-513.5	1,247.8	1,227.5	20.32	61.403		
3,900.0	3,828.9	3,613.9	3,510.0	13.8	17.3	145.97	610.9	-529.2	1,292.6	1,271.7	20.97	61.655		
4,000.0	3,925.6	3,703.3	3,596.1	14.3	17.8	146.16	628.8	-544.9	1,337.4	1,315.8	21.61	61.891		
4,100.0	4,022.4	3,792.6	3,682.2	14.8	18.3	146.33	646.7	-560.6	1,382.3	1,360.0	22.25	62.112		
4,200.0	4,119.2	3,881.9	3,768.3	15.3	18.7	146.50	664.6	-576.2	1,427.1	1,404.2	22.90	62.320		
4,300.0	4,216.0	3,971.2	3,854.4	15.8	19.2	146.65	682.4	-591.9	1,471.9	1,448.4	23.55	62.515		
4,400.0	4,312.8	4,060.5	3,940.5	16.4	19.7	146.80	700.3	-607.6	1,516.8	1,492.6	24.19	62.699		
4,500.0	4,409.6	4,149.8	4,026.6	16.9	20.2	146.94	718.2	-623.3	1,561.6	1,536.8	24.84	62.872		
4,600.0	4,506.4	4,239.1	4,112.7	17.4	20.7	147.07	736.1	-638.9	1,606.5	1,581.0	25.49	63.036		
4,700.0	4,603.2	4,328.4	4,198.8	17.9	21.2	147.19	753.9	-654.6	1,651.4	1,625.2	26.13	63.191		
4,800.0	4,699.9	4,417.8	4,284.9	18.4	21.7	147.31	771.8	-670.3	1,696.3	1,669.5	26.78	63.338		
4,882.5	4,779.8	4,491.4	4,355.9	18.9	22.1	147.40	786.6	-683.2	1,733.3	1,706.0	27.32	63.453		

CC - Min centre to center distance or convergent point, SF - min separation factor, ES - min ellipse separation

Company:	Synergy Resources	Local Co-ordinate Reference:	Well SRC Pratt 29SD
Project:	SEC.29-T1N-R68W	TVD Reference:	WELL @ 5224.0ft (Original Well Elev)
Reference Site:	SRC Pratt 41-29D Pad Sec.29-T1N-R68W	MD Reference:	WELL @ 5224.0ft (Original Well Elev)
Site Error:	0.0ft	North Reference:	True
Reference Well:	SRC Pratt 29SD	Survey Calculation Method:	Minimum Curvature
Well Error:	0.0ft	Output errors are at	2.00 sigma
Reference Wellbore	Wellbore #1	Database:	Landmark
Reference Design:	Plan #1 (3-01-11)	Offset TVD Reference:	Offset Datum

Offset Design SRC Pratt 41-29D Pad Sec.29-T1N-R68W - SRC Pratt 31-29D - Wellbore #1 - Plan #1 (3-01-11)													Offset Site Error:	0.0 ft
Survey Program: 0-MWD													Offset Well Error:	0.0 ft
Reference		Offset		Semi Major Axis			Distance							Warning
Measured Depth	Vertical Depth	Measured Depth	Vertical Depth	Reference	Offset	Highside Toolface	Offset Wellbore Centre	Between Centres	Between Ellipses	Minimum Separation	Separation Factor			
(ft)	(ft)	(ft)	(ft)	(ft)	(ft)	(°)	+N/-S (ft)	+E/-W (ft)	(ft)	(ft)	(ft)			
4,900.0	4,796.7	4,507.1	4,371.0	19.0	22.2	147.51	789.7	-686.0	1,741.1	1,713.6	27.46	63.410		
5,000.0	4,894.1	4,597.3	4,457.9	19.3	22.7	148.08	807.8	-701.8	1,784.2	1,756.0	28.22	63.229		
5,100.0	4,992.2	4,688.8	4,546.1	19.6	23.2	148.54	826.1	-717.8	1,824.6	1,795.6	28.95	63.027		
5,200.0	5,090.9	4,781.4	4,635.4	19.9	23.8	148.89	844.6	-734.1	1,862.3	1,832.6	29.65	62.814		
5,300.0	5,190.1	4,875.0	4,725.6	20.2	24.3	149.15	863.4	-750.5	1,897.1	1,866.8	30.31	62.597		
5,400.0	5,289.7	4,969.6	4,816.8	20.4	24.8	149.33	882.3	-767.1	1,929.2	1,898.3	30.93	62.382		
5,500.0	5,389.5	5,064.9	4,908.7	20.5	25.3	149.41	901.4	-783.9	1,958.5	1,927.0	31.50	62.172		
5,600.0	5,489.5	5,161.0	5,001.2	20.7	25.9	149.42	920.6	-800.7	1,984.8	1,952.8	32.03	61.971		
5,610.5	5,500.0	5,171.1	5,011.0	20.7	25.9	-18.33	922.6	-802.5	1,987.4	1,955.4	32.08	61.948		
5,700.0	5,589.5	5,367.0	5,201.0	20.8	26.7	-18.87	958.2	-833.7	2,007.9	1,975.2	32.71	61.392		
5,800.0	5,689.5	5,651.6	5,481.8	20.9	27.6	-19.36	992.5	-863.8	2,022.8	1,989.4	33.42	60.528		
5,900.0	5,789.5	5,942.6	5,772.2	21.0	28.1	-19.55	1,005.7	-875.4	2,028.4	1,994.4	34.00	59.651		
6,000.0	5,889.5	6,060.9	5,890.5	21.1	28.2	-19.55	1,005.8	-875.4	2,028.5	1,994.2	34.32	59.100		
6,100.0	5,989.5	6,160.9	5,990.5	21.2	28.3	-19.55	1,005.8	-875.4	2,028.5	1,993.9	34.63	58.582		
6,200.0	6,089.5	6,260.9	6,090.5	21.3	28.4	-19.55	1,005.8	-875.4	2,028.5	1,993.6	34.93	58.066		
6,300.0	6,189.5	6,360.9	6,190.5	21.5	28.5	-19.55	1,005.8	-875.4	2,028.5	1,993.2	35.24	57.555		
6,400.0	6,289.5	6,460.9	6,290.5	21.6	28.6	-19.55	1,005.8	-875.4	2,028.5	1,992.9	35.56	57.048		
6,500.0	6,389.5	6,560.9	6,390.5	21.7	28.7	-19.55	1,005.8	-875.4	2,028.5	1,992.6	35.87	56.546		
6,600.0	6,489.5	6,660.9	6,490.5	21.8	28.8	-19.55	1,005.8	-875.4	2,028.5	1,992.3	36.19	56.047		
6,700.0	6,589.5	6,760.9	6,590.5	21.9	28.9	-19.55	1,005.8	-875.4	2,028.5	1,992.0	36.51	55.553		
6,800.0	6,689.5	6,860.9	6,690.5	22.1	29.0	-19.55	1,005.8	-875.4	2,028.5	1,991.6	36.84	55.064		
6,900.0	6,789.5	6,960.9	6,790.5	22.2	29.1	-19.55	1,005.8	-875.4	2,028.5	1,991.3	37.17	54.580		
7,000.0	6,889.5	7,060.9	6,890.5	22.3	29.2	-19.55	1,005.8	-875.4	2,028.5	1,991.0	37.50	54.100		
7,100.0	6,989.5	7,160.9	6,990.5	22.4	29.3	-19.55	1,005.8	-875.4	2,028.5	1,990.7	37.83	53.625		
7,200.0	7,089.5	7,260.9	7,090.5	22.6	29.5	-19.55	1,005.8	-875.4	2,028.5	1,990.3	38.16	53.155		
7,300.0	7,189.5	7,360.9	7,190.5	22.7	29.6	-19.55	1,005.8	-875.4	2,028.5	1,990.0	38.50	52.690		
7,400.0	7,289.5	7,460.9	7,290.5	22.8	29.7	-19.55	1,005.8	-875.4	2,028.5	1,989.6	38.84	52.230		
7,500.0	7,389.5	7,560.9	7,390.5	23.0	29.8	-19.55	1,005.8	-875.4	2,028.5	1,989.3	39.18	51.775		
7,600.0	7,489.5	7,660.9	7,490.5	23.1	29.9	-19.55	1,005.8	-875.4	2,028.5	1,989.0	39.52	51.325		
7,700.0	7,589.5	7,760.9	7,590.5	23.2	30.0	-19.55	1,005.8	-875.4	2,028.5	1,988.6	39.87	50.880		
7,800.0	7,689.5	7,860.9	7,690.5	23.4	30.2	-19.55	1,005.8	-875.4	2,028.5	1,988.3	40.22	50.440		
7,900.0	7,789.5	7,960.9	7,790.5	23.5	30.3	-19.55	1,005.8	-875.4	2,028.5	1,987.9	40.57	50.005		
8,000.0	7,889.5	8,060.9	7,890.5	23.7	30.4	-19.55	1,005.8	-875.4	2,028.5	1,987.6	40.92	49.576		
8,100.0	7,989.5	8,160.9	7,990.5	23.8	30.5	-19.55	1,005.8	-875.4	2,028.5	1,987.2	41.27	49.151		
8,200.0	8,089.5	8,260.9	8,090.5	24.0	30.7	-19.55	1,005.8	-875.4	2,028.5	1,986.9	41.63	48.731		
8,252.6	8,142.1	8,313.5	8,143.1	24.0	30.7	-19.55	1,005.8	-875.4	2,028.5	1,986.7	41.81	48.513		
8,300.0	8,189.5	8,331.2	8,160.8	24.1	30.8	-19.55	1,005.8	-875.4	2,028.7	1,986.8	41.93	48.384		
8,400.0	8,289.5	8,331.2	8,160.8	24.2	30.8	-19.55	1,005.8	-875.4	2,032.6	1,990.5	42.11	48.270		
8,500.0	8,389.5	8,331.2	8,160.8	24.4	30.8	-19.55	1,005.8	-875.4	2,041.4	1,999.2	42.29	48.273		
8,600.0	8,489.5	8,331.2	8,160.8	24.5	30.8	-19.55	1,005.8	-875.4	2,055.1	2,012.6	42.47	48.388		
8,690.5	8,580.0	8,331.2	8,160.8	24.7	30.8	-19.55	1,005.8	-875.4	2,071.5	2,028.9	42.64	48.586		

Company:	Synergy Resources	Local Co-ordinate Reference:	Well SRC Pratt 29SD
Project:	SEC.29-T1N-R68W	TVD Reference:	WELL @ 5224.0ft (Original Well Elev)
Reference Site:	SRC Pratt 41-29D Pad Sec.29-T1N-R68W	MD Reference:	WELL @ 5224.0ft (Original Well Elev)
Site Error:	0.0ft	North Reference:	True
Reference Well:	SRC Pratt 29SD	Survey Calculation Method:	Minimum Curvature
Well Error:	0.0ft	Output errors are at	2.00 sigma
Reference Wellbore	Wellbore #1	Database:	Landmark
Reference Design:	Plan #1 (3-01-11)	Offset TVD Reference:	Offset Datum

Offset Design													Offset Site Error:	0.0ft
Survey Program: 0-MWD													Offset Well Error:	0.0ft
Reference		Offset		Semi Major Axis			Distance							Warning
Measured Depth (ft)	Vertical Depth (ft)	Measured Depth (ft)	Vertical Depth (ft)	Reference (ft)	Offset (ft)	Highside Toolface (°)	Offset Wellbore Centre +N/-S (ft)	+E/-W (ft)	Between Centres (ft)	Between Ellipses (ft)	Minimum Separation (ft)	Separation Factor		
0.0	0.0	0.0	0.0	0.0	0.0	-152.14	-17.5	-9.2	19.9					
100.0	100.0	98.0	98.0	0.1	0.1	-152.14	-17.5	-9.2	19.8	19.6	0.19	102.164		
200.0	200.0	198.0	198.0	0.3	0.3	-152.14	-17.5	-9.2	19.8	19.1	0.64	30.875		
300.0	300.0	298.0	298.0	0.5	0.5	-152.14	-17.5	-9.2	19.8	18.7	1.09	18.143		
400.0	400.0	398.0	398.0	0.8	0.8	-152.14	-17.5	-9.2	19.8	18.2	1.54	12.846		
500.0	500.0	498.0	498.0	1.0	1.0	-152.14	-17.5	-9.2	19.8	17.8	1.99	9.943		
600.0	600.0	598.0	598.0	1.2	1.2	-152.14	-17.5	-9.2	19.8	17.3	2.44	8.110		
700.0	700.0	698.0	698.0	1.4	1.4	-152.14	-17.5	-9.2	19.8	16.9	2.89	6.848		
800.0	800.0	798.0	798.0	1.7	1.7	-152.14	-17.5	-9.2	19.8	16.4	3.34	5.926		
900.0	900.0	898.0	898.0	1.9	1.9	-152.14	-17.5	-9.2	19.8	16.0	3.79	5.222		
1,000.0	1,000.0	998.0	998.0	2.1	2.1	-152.14	-17.5	-9.2	19.8	15.5	4.24	4.668 CC, ES		
1,100.0	1,100.0	1,097.5	1,097.4	2.3	2.3	-149.08	-18.0	-10.8	21.0	16.4	4.67	4.506 SF		
1,200.0	1,200.0	1,196.7	1,196.5	2.6	2.5	-141.67	-19.7	-15.6	25.2	20.1	5.09	4.953		
1,300.0	1,300.0	1,295.5	1,295.0	2.8	2.7	35.73	-22.6	-23.6	31.4	25.9	5.48	5.722		
1,400.0	1,399.8	1,393.8	1,392.6	2.9	3.0	46.79	-26.5	-34.7	39.0	33.1	5.85	6.661		
1,500.0	1,499.5	1,491.5	1,489.1	3.1	3.2	57.46	-31.5	-48.9	49.1	42.8	6.24	7.861		
1,600.0	1,598.7	1,588.3	1,584.2	3.3	3.5	66.68	-37.6	-66.0	62.2	55.6	6.67	9.334		
1,700.0	1,697.5	1,684.2	1,677.7	3.6	3.9	74.17	-44.6	-85.9	78.7	71.6	7.15	11.014		
1,800.0	1,795.6	1,779.0	1,769.4	3.9	4.2	80.07	-52.6	-108.5	98.6	90.9	7.70	12.802		
1,900.0	1,893.1	1,875.7	1,862.5	4.2	4.7	85.15	-61.4	-133.2	120.6	112.2	8.35	14.446		
1,928.0	1,920.2	1,902.9	1,888.7	4.3	4.8	86.52	-63.8	-140.1	126.9	118.3	8.54	14.849		
2,000.0	1,989.9	1,972.5	1,955.7	4.6	5.2	89.89	-70.1	-157.9	143.3	134.2	9.08	15.785		
2,100.0	2,086.7	2,069.2	2,048.8	5.0	5.6	93.46	-78.9	-182.6	166.8	156.9	9.86	16.909		
2,200.0	2,183.5	2,166.0	2,141.9	5.4	6.1	96.15	-87.6	-207.3	190.7	180.0	10.68	17.850		
2,300.0	2,280.2	2,262.7	2,235.1	5.8	6.7	98.25	-96.4	-232.1	215.0	203.4	11.53	18.639		
2,400.0	2,377.0	2,359.5	2,328.2	6.3	7.2	99.91	-105.1	-256.8	239.4	227.0	12.40	19.304		
2,500.0	2,473.8	2,456.2	2,421.3	6.7	7.7	101.27	-113.9	-281.5	264.0	250.7	13.29	19.868		
2,600.0	2,570.6	2,553.0	2,514.5	7.2	8.2	102.40	-122.6	-306.2	288.8	274.6	14.19	20.349		
2,700.0	2,667.4	2,649.7	2,607.6	7.7	8.8	103.35	-131.4	-330.9	313.6	298.5	15.10	20.764		
2,800.0	2,764.2	2,746.5	2,700.7	8.2	9.3	104.16	-140.2	-355.6	338.5	322.4	16.02	21.124		
2,900.0	2,861.0	2,843.3	2,793.9	8.7	9.8	104.86	-148.9	-380.4	363.4	346.4	16.95	21.439		
3,000.0	2,957.8	2,940.0	2,887.0	9.2	10.4	105.47	-157.7	-405.1	388.4	370.5	17.89	21.715		
3,100.0	3,054.5	3,036.8	2,980.1	9.7	10.9	106.01	-166.4	-429.8	413.4	394.6	18.83	21.960		
3,200.0	3,151.3	3,133.5	3,073.2	10.2	11.5	106.48	-175.2	-454.5	438.5	418.7	19.77	22.178		
3,300.0	3,248.1	3,230.3	3,166.4	10.7	12.0	106.91	-183.9	-479.2	463.5	442.8	20.72	22.373		
3,400.0	3,344.9	3,327.0	3,259.5	11.2	12.6	107.29	-192.7	-504.0	488.6	467.0	21.67	22.548		
3,500.0	3,441.7	3,423.8	3,352.6	11.7	13.1	107.63	-201.4	-528.7	513.8	491.1	22.63	22.707		
3,600.0	3,538.5	3,520.5	3,445.8	12.2	13.7	107.94	-210.2	-553.4	538.9	515.3	23.58	22.851		
3,700.0	3,635.3	3,617.3	3,538.9	12.7	14.2	108.22	-218.9	-578.1	564.0	539.5	24.54	22.981		
3,800.0	3,732.1	3,714.0	3,632.0	13.3	14.8	108.48	-227.7	-602.8	589.2	563.7	25.50	23.101		
3,900.0	3,828.9	3,810.8	3,725.1	13.8	15.3	108.72	-236.4	-627.6	614.4	587.9	26.47	23.211		
4,000.0	3,925.6	3,907.5	3,818.3	14.3	15.9	108.94	-245.2	-652.3	639.5	612.1	27.43	23.312		
4,100.0	4,022.4	4,004.3	3,911.4	14.8	16.5	109.14	-254.0	-677.0	664.7	636.3	28.40	23.405		
4,200.0	4,119.2	4,101.0	4,004.5	15.3	17.0	109.33	-262.7	-701.7	689.9	660.5	29.37	23.491		
4,300.0	4,216.0	4,197.8	4,097.7	15.8	17.6	109.51	-271.5	-726.4	715.1	684.8	30.34	23.571		
4,400.0	4,312.8	4,294.5	4,190.8	16.4	18.1	109.67	-280.2	-751.2	740.3	709.0	31.31	23.646		
4,500.0	4,409.6	4,403.1	4,295.6	16.9	18.7	109.90	-289.7	-778.0	765.0	732.8	32.28	23.697		
4,600.0	4,506.4	4,519.0	4,408.5	17.4	19.1	110.39	-298.5	-802.7	787.6	754.4	33.18	23.739		
4,700.0	4,603.2	4,635.6	4,523.0	17.9	19.5	111.12	-305.7	-823.2	807.9	773.9	34.04	23.734		
4,800.0	4,699.9	4,752.4	4,638.6	18.4	19.8	112.09	-311.4	-839.3	826.0	791.1	34.87	23.691		
4,882.5	4,779.8	4,848.8	4,734.3	18.9	20.0	113.05	-315.0	-849.3	839.4	803.9	35.51	23.635		
4,900.0	4,796.7	4,869.2	4,754.7	19.0	20.1	113.32	-315.6	-851.0	842.0	806.4	35.65	23.621		

CC - Min centre to center distance or convergent point, SF - min separation factor, ES - min ellipse separation

Company:	Synergy Resources	Local Co-ordinate Reference:	Well SRC Pratt 29SD
Project:	SEC.29-T1N-R68W	TVD Reference:	WELL @ 5224.0ft (Original Well Elev)
Reference Site:	SRC Pratt 41-29D Pad Sec.29-T1N-R68W	MD Reference:	WELL @ 5224.0ft (Original Well Elev)
Site Error:	0.0ft	North Reference:	True
Reference Well:	SRC Pratt 29SD	Survey Calculation Method:	Minimum Curvature
Well Error:	0.0ft	Output errors are at	2.00 sigma
Reference Wellbore	Wellbore #1	Database:	Landmark
Reference Design:	Plan #1 (3-01-11)	Offset TVD Reference:	Offset Datum

Offset Design												Offset Site Error:	0.0ft
Survey Program: 0-MWD												Offset Well Error:	0.0ft
Reference		Offset		Semi Major Axis			Distance						Warning
Measured Depth (ft)	Vertical Depth (ft)	Measured Depth (ft)	Vertical Depth (ft)	Reference (ft)	Offset (ft)	Highside Toolface (°)	Offset Wellbore Centre +N/-S (ft)	+E/-W (ft)	Between Centres (ft)	Between Ellipses (ft)	Minimum Separation (ft)	Separation Factor	
5,000.0	4,894.1	4,986.1	4,871.3	19.3	20.3	114.80	-318.1	-858.2	855.2	818.9	36.29	23.568	
5,100.0	4,992.2	5,103.2	4,988.3	19.6	20.4	116.19	-319.1	-860.9	865.0	828.2	36.83	23.487	
5,200.0	5,090.9	5,203.7	5,088.9	19.9	20.6	117.27	-319.1	-860.9	872.3	835.0	37.28	23.397	
5,300.0	5,190.1	5,302.9	5,188.1	20.2	20.7	118.10	-319.1	-860.9	878.2	840.5	37.69	23.302	
5,400.0	5,289.7	5,402.5	5,287.7	20.4	20.8	118.69	-319.1	-860.9	882.5	844.5	38.04	23.197	
5,500.0	5,389.5	5,502.3	5,387.5	20.5	20.9	119.06	-319.1	-860.9	885.2	846.9	38.35	23.080	
5,600.0	5,489.5	5,602.3	5,487.5	20.7	21.0	119.20	-319.1	-860.9	886.2	847.6	38.62	22.947	
5,610.5	5,500.0	5,612.8	5,498.0	20.7	21.0	-48.56	-319.1	-860.9	886.2	847.6	38.65	22.932	
5,700.0	5,589.5	5,702.3	5,587.5	20.8	21.1	-48.56	-319.1	-860.9	886.2	847.4	38.87	22.799	
5,800.0	5,689.5	5,802.3	5,687.5	20.9	21.3	-48.56	-319.1	-860.9	886.2	847.1	39.12	22.657	
5,900.0	5,789.5	5,902.3	5,787.5	21.0	21.4	-48.56	-319.1	-860.9	886.2	846.9	39.36	22.514	
6,000.0	5,889.5	6,002.3	5,887.5	21.1	21.5	-48.56	-319.1	-860.9	886.2	846.6	39.62	22.371	
6,100.0	5,989.5	6,102.3	5,987.5	21.2	21.6	-48.56	-319.1	-860.9	886.2	846.4	39.87	22.228	
6,200.0	6,089.5	6,202.3	6,087.5	21.3	21.8	-48.56	-319.1	-860.9	886.2	846.1	40.13	22.085	
6,300.0	6,189.5	6,302.3	6,187.5	21.5	21.9	-48.56	-319.1	-860.9	886.2	845.9	40.39	21.942	
6,400.0	6,289.5	6,402.3	6,287.5	21.6	22.0	-48.56	-319.1	-860.9	886.2	845.6	40.66	21.799	
6,500.0	6,389.5	6,502.3	6,387.5	21.7	22.1	-48.56	-319.1	-860.9	886.2	845.3	40.92	21.656	
6,600.0	6,489.5	6,602.3	6,487.5	21.8	22.3	-48.56	-319.1	-860.9	886.2	845.1	41.20	21.513	
6,700.0	6,589.5	6,702.3	6,587.5	21.9	22.4	-48.56	-319.1	-860.9	886.2	844.8	41.47	21.371	
6,800.0	6,689.5	6,802.3	6,687.5	22.1	22.5	-48.56	-319.1	-860.9	886.2	844.5	41.75	21.228	
6,900.0	6,789.5	6,902.3	6,787.5	22.2	22.7	-48.56	-319.1	-860.9	886.2	844.2	42.03	21.087	
7,000.0	6,889.5	7,002.3	6,887.5	22.3	22.8	-48.56	-319.1	-860.9	886.2	843.9	42.31	20.945	
7,100.0	6,989.5	7,102.3	6,987.5	22.4	23.0	-48.56	-319.1	-860.9	886.2	843.6	42.60	20.805	
7,200.0	7,089.5	7,202.3	7,087.5	22.6	23.1	-48.56	-319.1	-860.9	886.2	843.4	42.89	20.664	
7,300.0	7,189.5	7,302.3	7,187.5	22.7	23.3	-48.56	-319.1	-860.9	886.2	843.1	43.18	20.525	
7,400.0	7,289.5	7,402.3	7,287.5	22.8	23.4	-48.56	-319.1	-860.9	886.2	842.8	43.47	20.386	
7,500.0	7,389.5	7,502.3	7,387.5	23.0	23.5	-48.56	-319.1	-860.9	886.2	842.5	43.77	20.247	
7,600.0	7,489.5	7,602.3	7,487.5	23.1	23.7	-48.56	-319.1	-860.9	886.2	842.2	44.07	20.109	
7,700.0	7,589.5	7,702.3	7,587.5	23.2	23.8	-48.56	-319.1	-860.9	886.2	841.9	44.37	19.972	
7,800.0	7,689.5	7,802.3	7,687.5	23.4	24.0	-48.56	-319.1	-860.9	886.2	841.6	44.68	19.836	
7,900.0	7,789.5	7,902.3	7,787.5	23.5	24.1	-48.56	-319.1	-860.9	886.2	841.3	44.99	19.701	
8,000.0	7,889.5	8,002.3	7,887.5	23.7	24.3	-48.56	-319.1	-860.9	886.2	841.0	45.30	19.566	
8,100.0	7,989.5	8,102.3	7,987.5	23.8	24.4	-48.56	-319.1	-860.9	886.2	840.6	45.61	19.432	
8,200.0	8,089.5	8,202.3	8,087.5	24.0	24.6	-48.56	-319.1	-860.9	886.2	840.3	45.92	19.299	
8,254.0	8,143.5	8,256.3	8,141.5	24.0	24.7	-48.56	-319.1	-860.9	886.2	840.2	46.09	19.228	
8,300.0	8,189.5	8,274.8	8,160.0	24.1	24.7	-48.56	-319.1	-860.9	886.7	840.5	46.19	19.195	
8,400.0	8,289.5	8,274.8	8,160.0	24.2	24.7	-48.56	-319.1	-860.9	895.4	849.0	46.35	19.318	
8,500.0	8,389.5	8,274.8	8,160.0	24.4	24.7	-48.56	-319.1	-860.9	915.0	868.5	46.51	19.674	
8,600.0	8,489.5	8,274.8	8,160.0	24.5	24.7	-48.56	-319.1	-860.9	944.8	898.2	46.67	20.247	
8,690.5	8,580.0	8,274.8	8,160.0	24.7	24.7	-48.56	-319.1	-860.9	979.9	933.1	46.81	20.933	

Company:	Synergy Resources	Local Co-ordinate Reference:	Well SRC Pratt 29SD
Project:	SEC.29-T1N-R68W	TVD Reference:	WELL @ 5224.0ft (Original Well Elev)
Reference Site:	SRC Pratt 41-29D Pad Sec.29-T1N-R68W	MD Reference:	WELL @ 5224.0ft (Original Well Elev)
Site Error:	0.0ft	North Reference:	True
Reference Well:	SRC Pratt 29SD	Survey Calculation Method:	Minimum Curvature
Well Error:	0.0ft	Output errors are at	2.00 sigma
Reference Wellbore	Wellbore #1	Database:	Landmark
Reference Design:	Plan #1 (3-01-11)	Offset TVD Reference:	Offset Datum

Reference Depths are relative to WELL @ 5224.0ft (Original Well Elev) Coordinates are relative to: SRC Pratt 29SD
 Offset Depths are relative to Offset Datum
 Coordinate System is US State Plane 1983, Colorado Northern Zone
 Central Meridian is -105.500000 °
 Grid Convergence at Surface is: 0.31°



Company:	Synergy Resources	Local Co-ordinate Reference:	Well SRC Pratt 29SD
Project:	SEC.29-T1N-R68W	TVD Reference:	WELL @ 5224.0ft (Original Well Elev)
Reference Site:	SRC Pratt 41-29D Pad Sec.29-T1N-R68W	MD Reference:	WELL @ 5224.0ft (Original Well Elev)
Site Error:	0.0ft	North Reference:	True
Reference Well:	SRC Pratt 29SD	Survey Calculation Method:	Minimum Curvature
Well Error:	0.0ft	Output errors are at	2.00 sigma
Reference Wellbore	Wellbore #1	Database:	Landmark
Reference Design:	Plan #1 (3-01-11)	Offset TVD Reference:	Offset Datum

Reference Depths are relative to WELL @ 5224.0ft (Original Well Elev) Coordinates are relative to: SRC Pratt 29SD
Offset Depths are relative to Offset Datum Coordinate System is US State Plane 1983, Colorado Northern Zone
Central Meridian is -105.500000 ° Grid Convergence at Surface is: 0.31°

