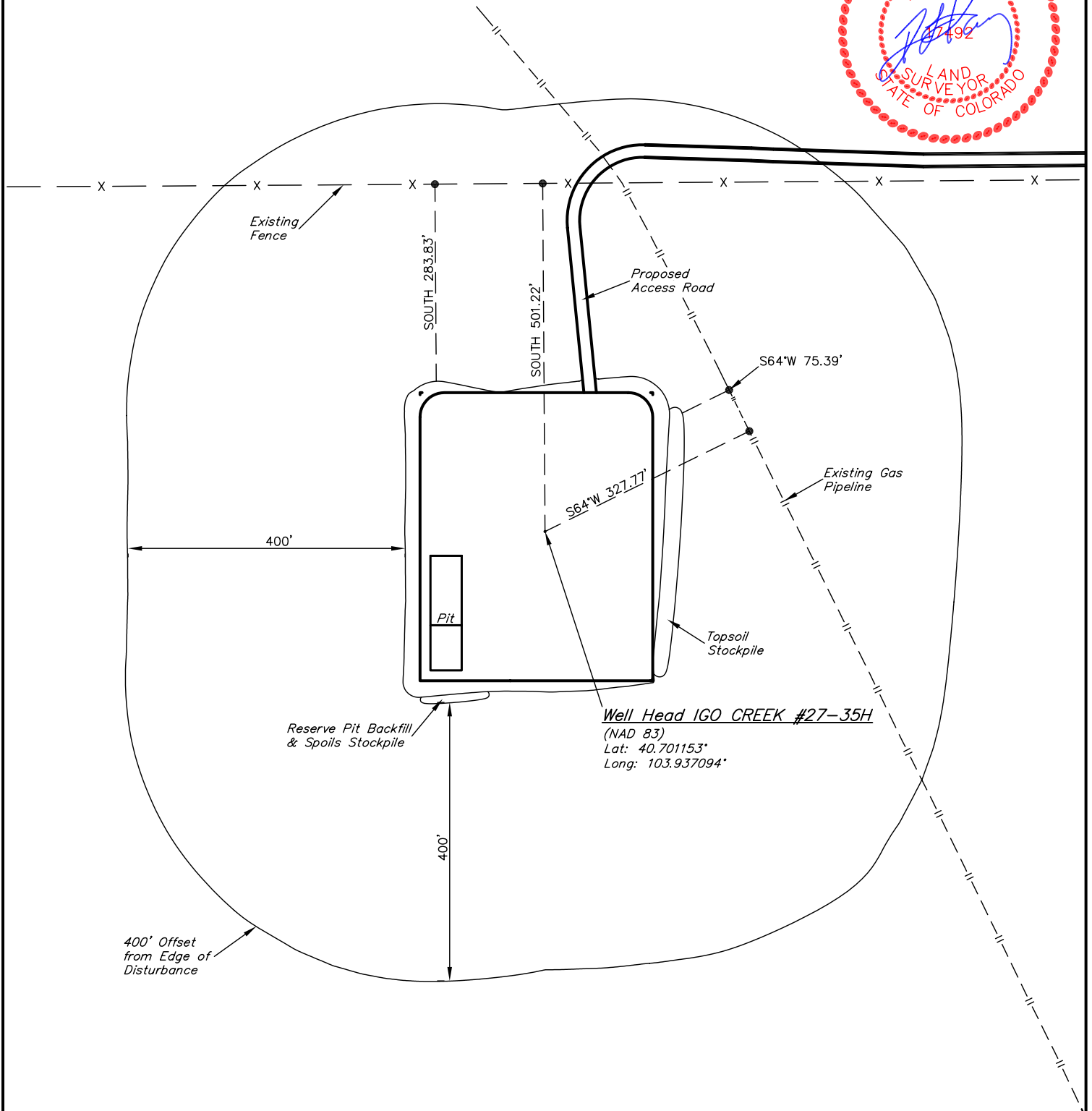




EOG RESOURCES, INC.
ADDENDUM TO LEGAL PLAT FOR
IGO CREEK #27-35H
SECTION 35, T9N, R59W, 6th. P.M.
501' FSL 501' FEL

SCALE: 1" = 200'
DATE: 01-7-11
DRAWN BY: J.I.



EOG RESOURCES, INC.

CONSTRUCTION LAYOUT FOR

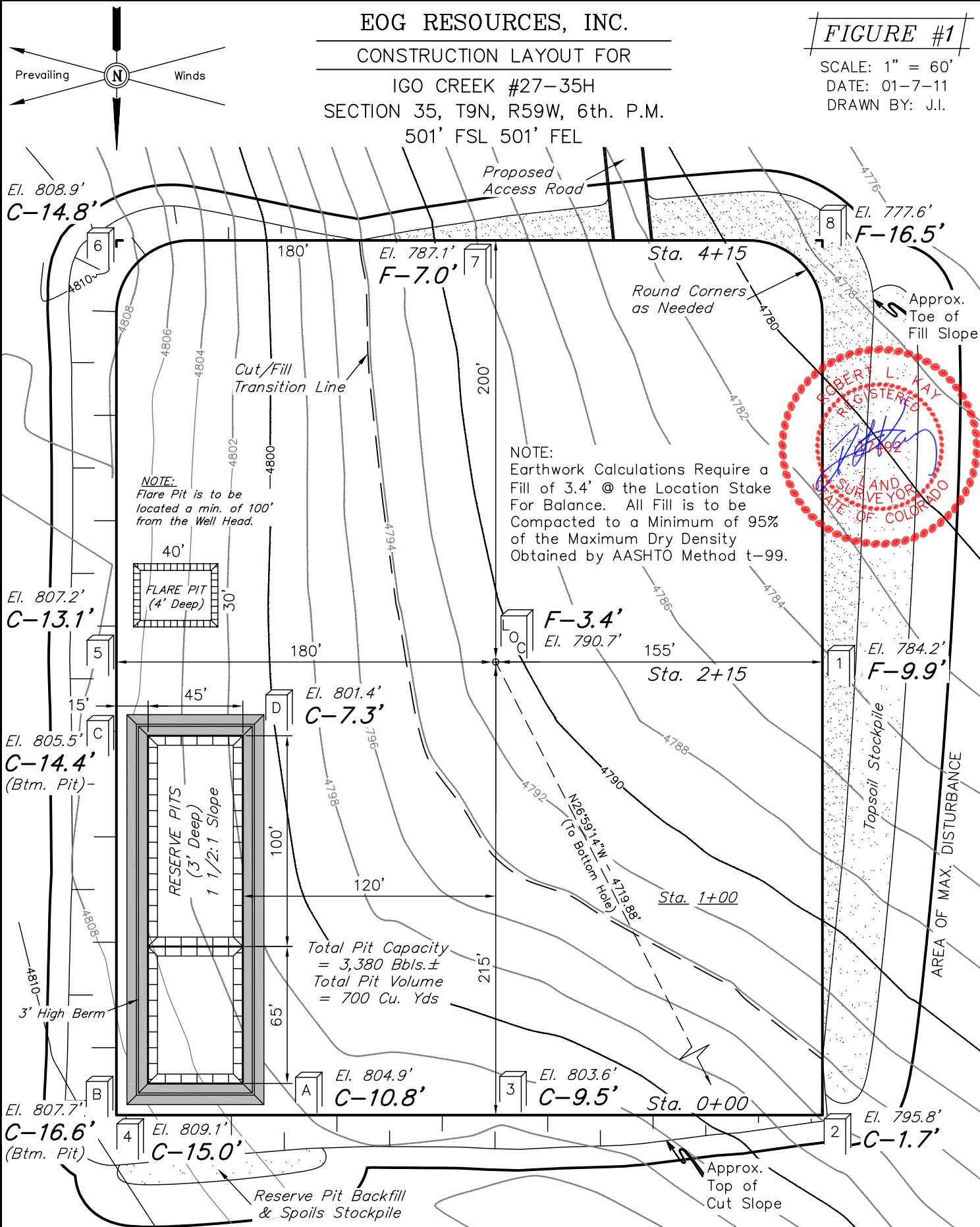
IGO CREEK #27-35H
SECTION 35, T9N, R59W, 6th. P.M.
501' FSL 501' FEL

FIGURE #1

SCALE: 1" = 60'

DATE: 01-7-11

DRAWN BY: J.I.



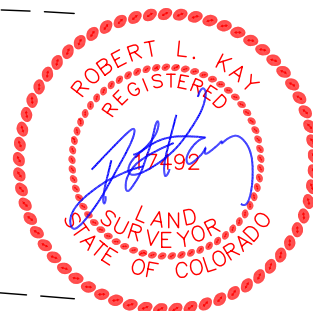
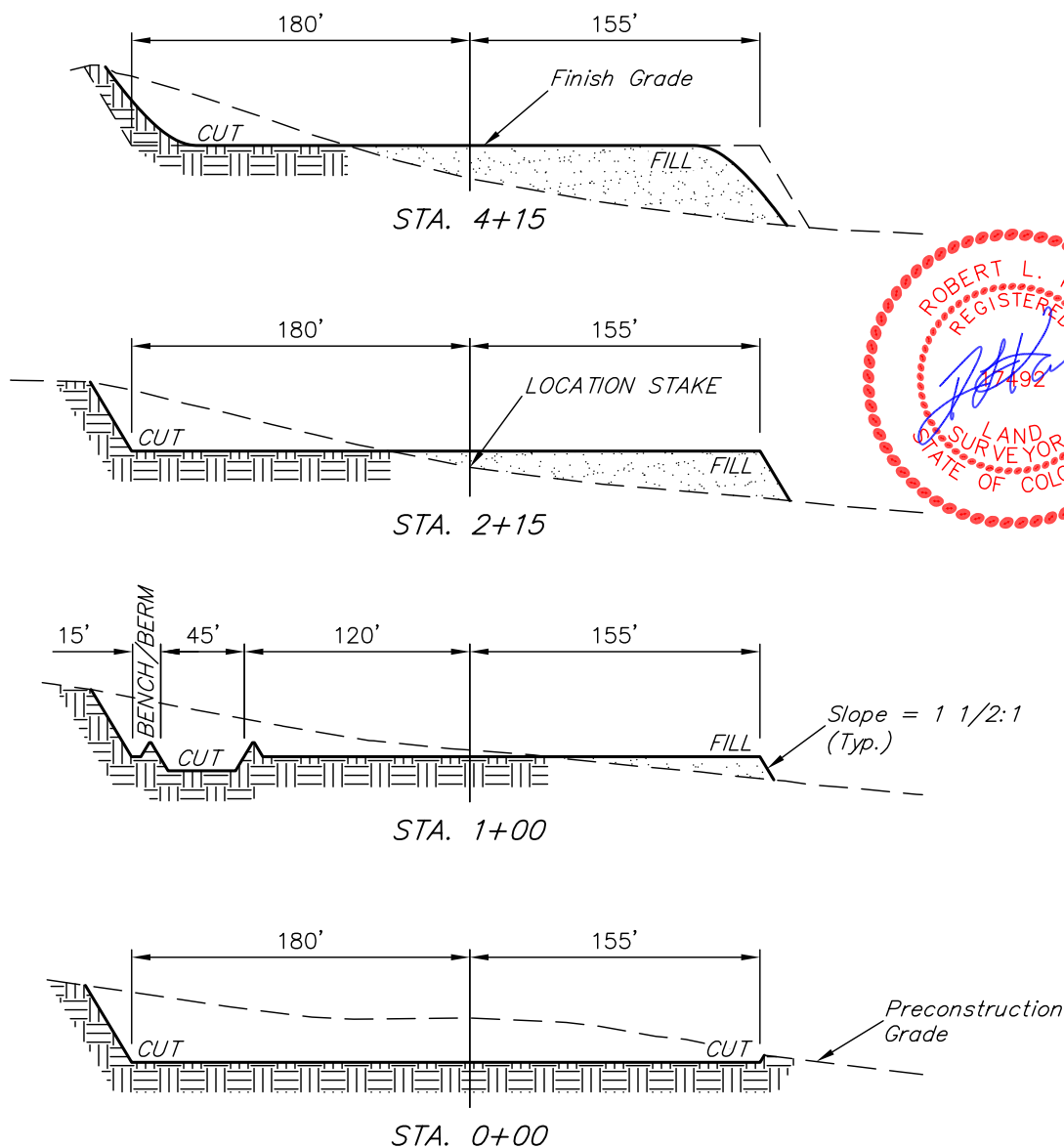
Elev. Ungraded Ground At Loc. Stake = 4790.7'
FINISHED GRADE ELEV. AT LOC. STAKE = 4794.1'

UINTAH ENGINEERING & LAND SURVEYING
85 So. 200 East * Vernal, Utah 84078 * (435) 789-1017

1" = 40'
X-Section
Scale
1" = 100'
DATE: 01-7-11
DRAWN BY: J.I.

EOG RESOURCES, INC.
CONSTRUCTION LAYOUT CROSS SECTIONS FOR
IGO CREEK #27-35H
SECTION 35, T9N, R59W, 6th. P.M.
501' FSL 501' FEL

FIGURE #2



APPROXIMATE ACREAGES
WELL SITE DISTURBANCE = ± 4.506 ACRES
ACCESS ROAD DISTURBANCE = ± 4.886 ACRES
TOTAL = ± 9.392 ACRES

* NOTE:
FILL QUANTITY INCLUDES
5% FOR COMPACTION

APPROXIMATE YARDAGES

(6") Topsoil Stripping = 3,140 Cu. Yds.
Remaining Location = 20,040 Cu. Yds.
TOTAL CUT = 23,180 CU.YDS.
FILL = 19,690 CU.YDS.

EXCESS MATERIAL = 3,490 Cu. Yds.
Topsoil & Pit Backfill = 3,490 Cu. Yds.
(1/2 Pit Vol.)
EXCESS UNBALANCE = 0 Cu. Yds.
(After Interim Rehabilitation)

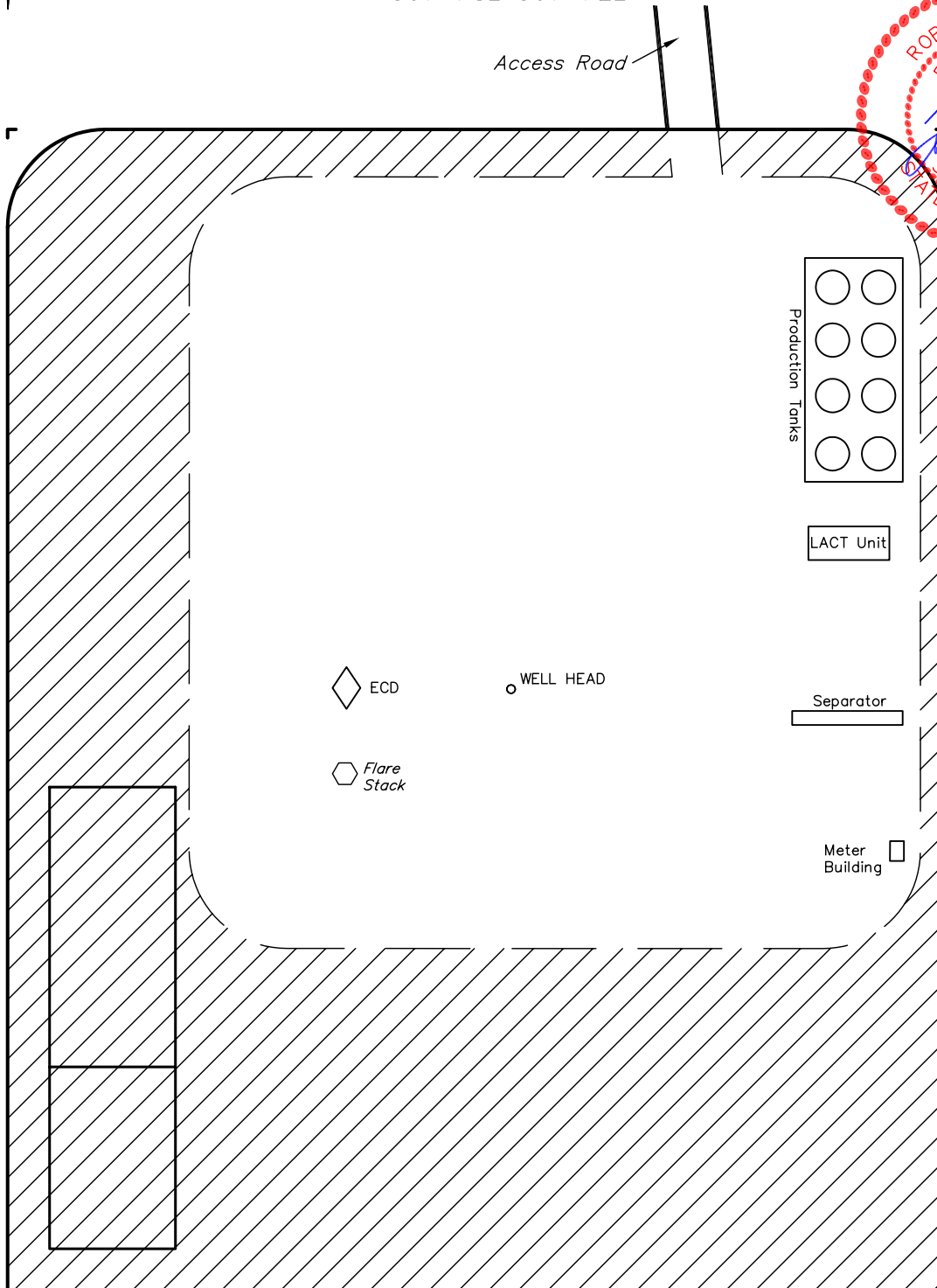
UINTAH ENGINEERING & LAND SURVEYING
85 So. 200 East * Vernal, Utah 84078 * (435) 789-1017

85 So. 200 East * Vernal, Utah 84078 * (435) 789-1017



EOG RESOURCES, INC.
RECLAMATION DIAGRAM FOR
IGO CREEK #27-35H
SECTION 35, T9N, R59W, 6th. P.M.
501' FSL 501' FEL

FIGURE #4
SCALE: 1" = 60'
DATE: 01-7-11
DRAWN BY: J.I.



APPROXIMATE ACREAGES
UN-RECLAIMED = ± 1.638 ACRES



UINTAH ENGINEERING & LAND SURVEYING
85 So. 200 East * Vernal, Utah 84078 * (435) 789-1017