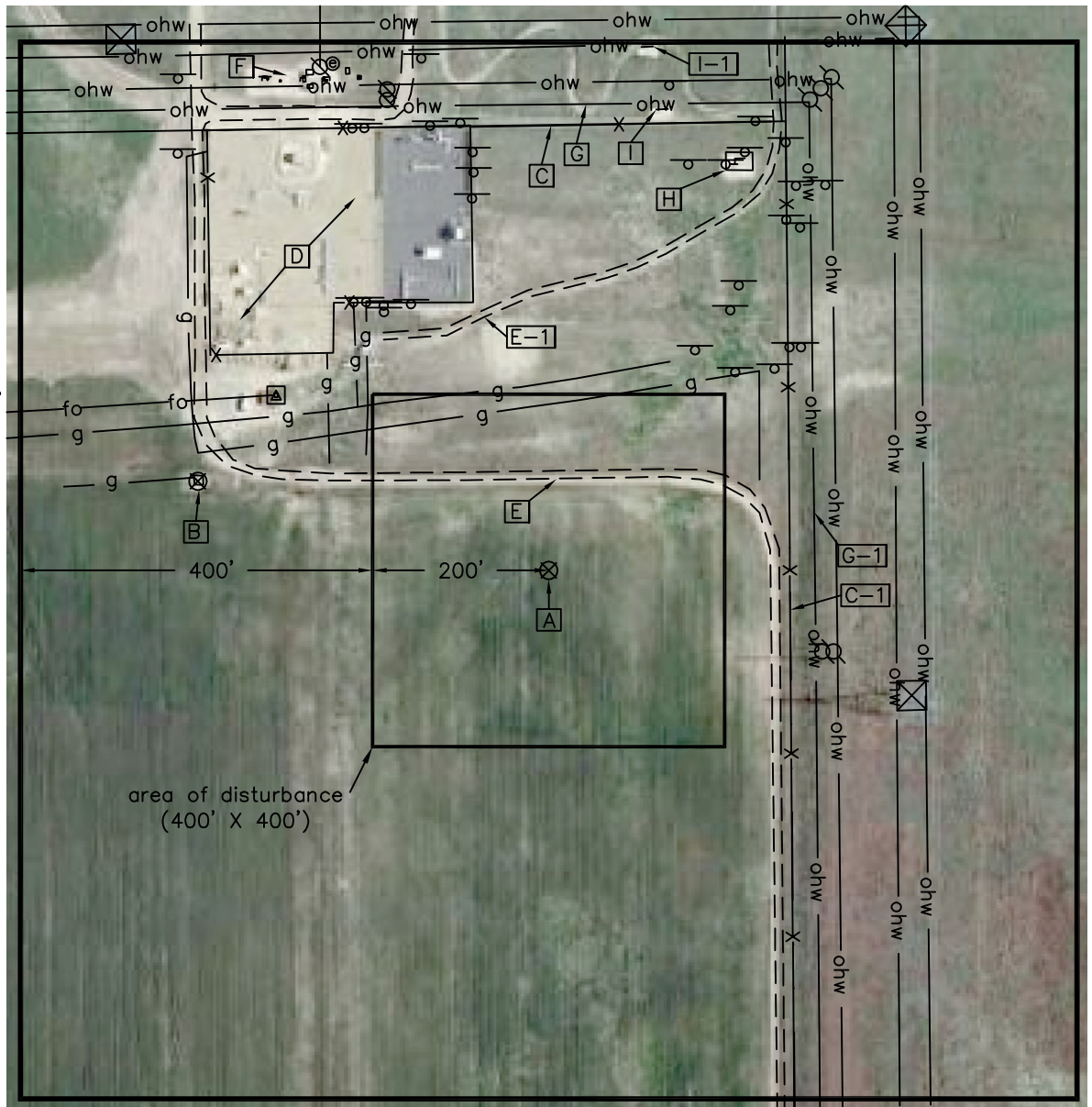


Nearest:
 Building 856' north
 Above Ground Utility 302' east
 Public Road 757' north
 Property Line 274' east
 Railroad 14,980' west

Location Drawing

Existing Well Data:
 McConahay 41-34A
 Latitude: N 40.10016°
 Longitude: W 104.75614°
 FNL: 658'
 FEL: 671'
 ELEV: 5061'
 PDOP: 1.6

Field observations
 taken on 3/1/11 by
 operator Craig Burke.



**Distances listed below
 are measured from the
 proposed McConahay 1A-34H**

- [A] proposed McConahay 1A-34H
- [B] existing McConahay 41-34A 411' northwest
- [C] approximate property line 506' north
- [C-1] approximate property line/fence 274' east
- [D] fenced in scrubber facilities 316' northwest
- [E] dirt access 104' north
- [E-1] dirt access 297' northwest
- [F] meter hut, above ground gas lines, gas valves and electric meter 609' northwest
- [G] over head power lines 529' north
- [G-1] over head power lines 302' east
- [H] fenced in above ground gas lines 497' northeast
- [I] above ground gas lines 537' northeast
- [I-1] above ground gas lines 603' northeast

- Legend:**
- g — markings for existing under ground gas lines
 - fo — markings for existing under fiber optic lines
 - ⊙ — electric meter
 - ⊗ — power pole
 - ⊠ — electric box/transformer
 - — gas signs
 - ⊞ — over head wire tower

McConahay NENE Pad Location Drawing

**Improvements extending
 400' from disturbance**

Township 2 North, Range 66 West,
 Section 34: NE $\frac{1}{4}$ NE $\frac{1}{4}$
 Weld County, Colorado

Scale: 1"=200'

March 2, 2011

PLS Group, LLC

109 Coronado Ct. — Bldg. 7, Fort Collins, Colorado 80525
 Phone: (970) 227-1312