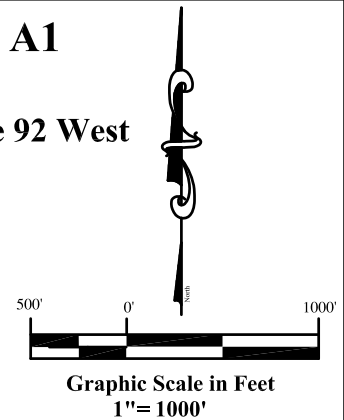
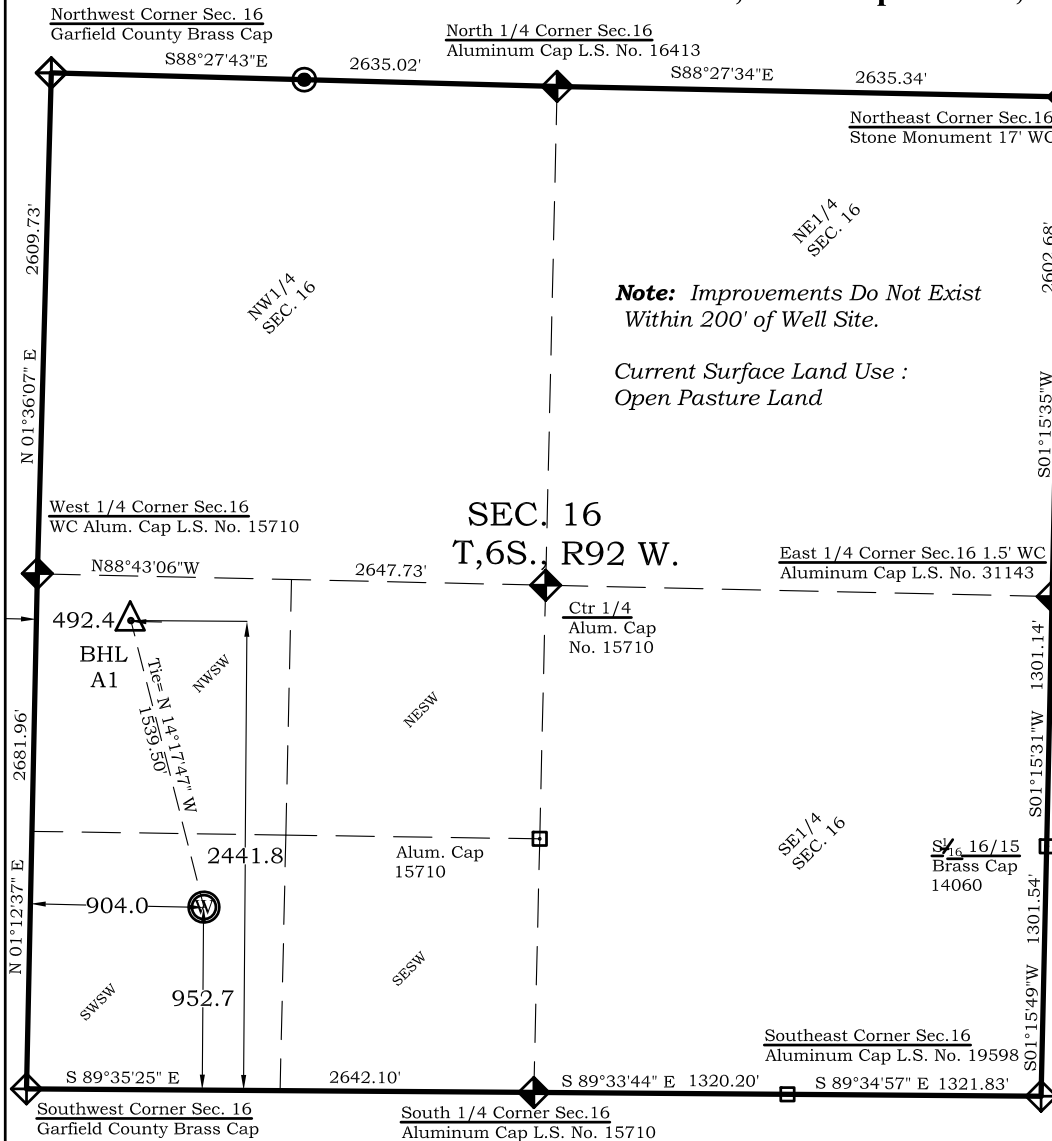


LEFT HAND FEDERAL A1
Well Location Plat
Section 16, Township 6 South, Range 92 West



Legend

- ◈ - Field Surveyed Section Corner
- ◈ - Field Surveyed Quarter Corner
- ⊙ - Calculated Section Corner Location
- ◈ - Field Surveyed 1/6 Corner

Bottom Hole: Left Hand A1

2442' FSL
492' FWL
NAD83
Lat: 39.526172836°N
Long: 107.679474085°W
NAD27
Lat: 39.526192301°N
Long: 107.678858400°W

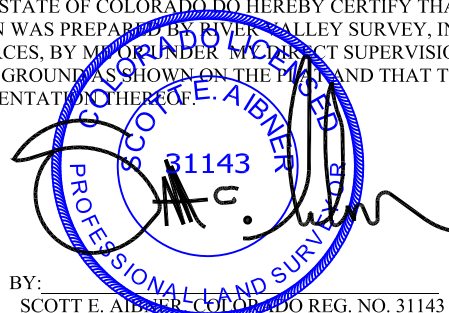
Surface: Left Hand A1

953' FSL
904' FWL
Gnd El= 5682.8
Pad El= 5684.5
NAD83
Lat: 39.522111195°N
Long: 107.677970034°W
NAD27
Lat: 39.522130655°N
Long: 107.677354460°W
UTM 13 NORTH
NAD 1983
NORTHING
14363958.160
EASTING
885193.914

Prepared For Antero Resources:
Proposed LEFT HAND FEDERAL A1 Well Situate in
The SW1/4 Section 16, Township 6 South, Range 92
West of the 6th. Principal Meridian, County of Garfield,
State of Colorado.

SURVEYOR'S CERTIFICATE

I, SCOTT E. AIBNER, A REGISTERED LAND SURVEYOR, LICENSED UNDER THE LAWS OF THE STATE OF COLORADO DO HEREBY CERTIFY THAT THE SURVEY SHOWN HEREON WAS PREPARED BY RIVER VALLEY SURVEY, INC., FOR ANTERO RESOURCES, BY MEANS UNDER MY DIRECT SUPERVISION AND HAS BEEN STAKED ON THE GROUND AS SHOWN ON THE PLAT AND THAT THIS PLAT IS A TRUE REPRESENTATION THEREOF.

BY: 
SCOTT E. AIBNER, COLORADO REG. NO. 31143

Notes:

1. LATITUDE AND LONGITUDE COORDINATES ARE DIFFERENTIALLY CORRECTED AND BASED ON PUBLISHED NGS CONTROL STATION "WDP-5". SYSTEM: UTM ZONE: 13 NORTH DATUM: NAD 1983 (CONUS)
2. ELEVATIONS ARE BASED ON NAVD OF 1983.
3. ALL BOTTOM AND TOP HOLE LOCATIONS ARE MEASURED 90 DEGREES FROM SECTION LINE.
4. USGS QUADRANGLE MAP "GIBSON GULCH".
5. CURRENT SURFACE LAND USE: OPEN RANGE LAND.
6. PDOP AT THE TIME OF LOCATION OF SURFACE WELL = 2.5



River Valley Survey, Inc.
110 East 3rd. Street, Suite 213
Rifle, Colorado 81650
Ph: 970-379-7846

Project: LEFT HAND A PAD

Field Date: 01-04-11

Date: 02-07-11

Scale: 1"= 1000'

Sheet: 1 of 11

Well Location Plat
Prepared For Antero Resources

Situate In:
SW1/4 Section 16, T6S., R. 92 W. of the
6th P.M., Garfield County, Colorado

