

T5S, R95W, 6th P.M.

Encana OIL & GAS (USA) INC.

Well location, N. PARACHUTE EMF15A-17 F17 595, located as shown in the SE 1/4 NW 1/4 of Section 17, T5S, R95W, 6th P.M., Garfield County, Colorado.

BASIS OF ELEVATION

SPOT ELEVATION AT THE NORTHWEST CORNER OF SECTION 30, T5S, R95W, 6th P.M. TAKEN FROM THE FORKED GULCH QUADRANGLE, COLORADO, GARFIELD COUNTY, 7.5 MINUTE SERIES (TOPOGRAPHICAL MAP) PUBLISHED BY THE UNITED STATES DEPARTMENT OF THE INTERIOR, GEOLOGICAL SURVEY. SAID ELEVATION IS MARKED AS BEING 5966 FEET.

BASIS OF BEARINGS

BASIS OF BEARINGS IS A G.P.S. OBSERVATION.

NOTE:
THE APPROXIMATE PROPERTY LINE BEARS N10°W 210' FROM THE PROPOSED TARGET BOTTOM HOLE. PROPERTY LINE INFORMATION WAS RECEIVED FROM THE GARFIELD COUNTY GIS DEPARTMENT AND HAS NOT BEEN SURVEYED.

Sheet 1p of 11



CERTIFICATE

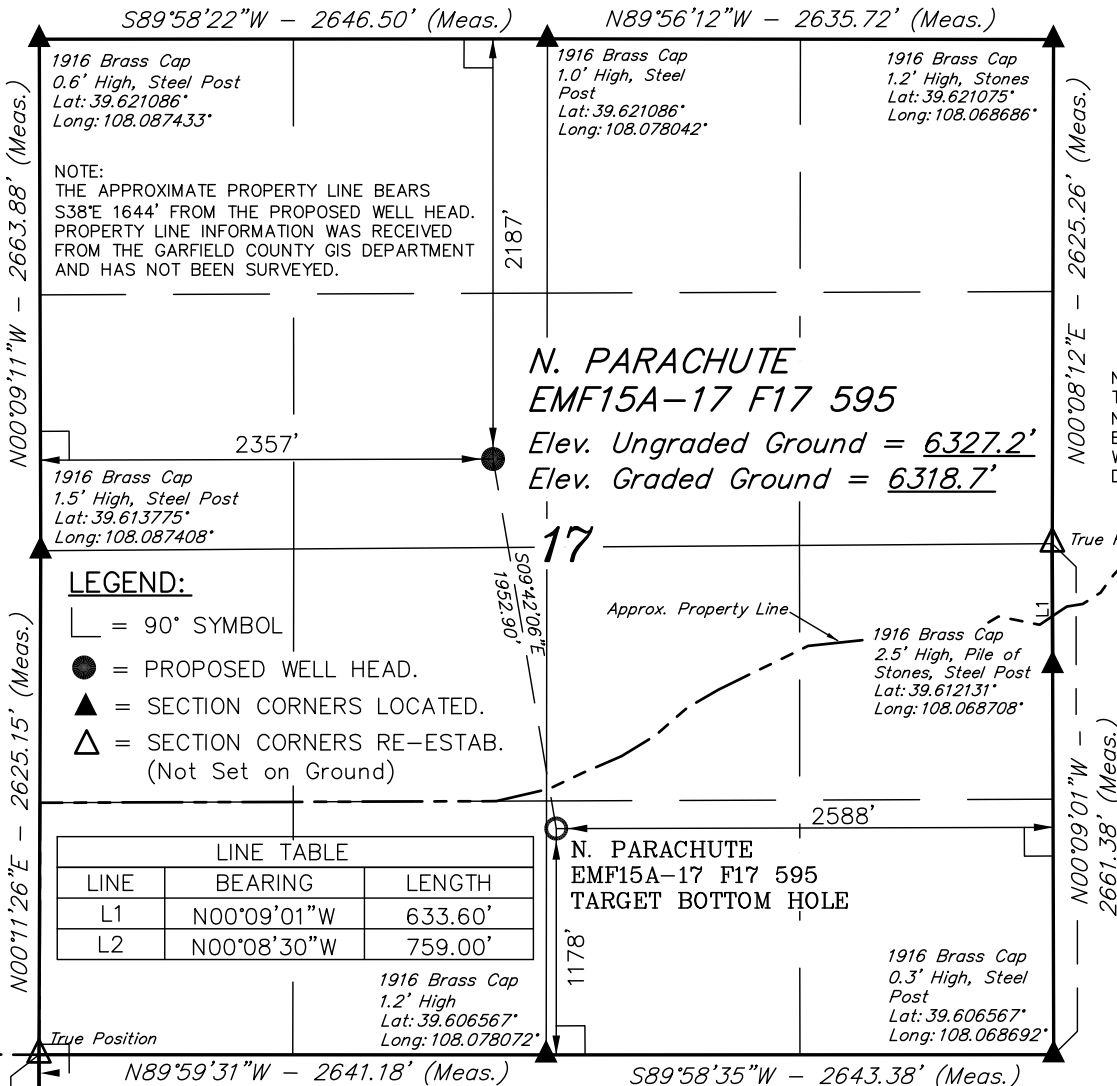
THIS IS TO CERTIFY THAT THE ABOVE PLAT WAS PREPARED FROM FIELD NOTES OF ACTUAL SURVEYS MADE BY ME OR UNDER MY SUPERVISION AND THAT THE SAME ARE TRUE AND CORRECT TO THE BEST OF MY KNOWLEDGE AND BELIEF.

REGISTERED LAND SURVEYOR
REGISTRATION NO. 17492
STATE OF COLORADO

Revised: 02-14-11 D.R.B.
Revised: 11-17-10 D.R.B.
Revised: 10-14-10 D.R.B.

UINTAH ENGINEERING & LAND SURVEYING
85 SOUTH 200 EAST - VERNAL, UTAH 84078
(435) 789-1017

SCALE 1" = 1000'	DATE SURVEYED: 09-21-10	DATE DRAWN: 10-10-10
PARTY G.O. B.J. D.R.B.	REFERENCES G.L.O. PLAT	
WEATHER WARM	FILE Encana OIL & GAS (USA) INC.	



NOTE:
SEE SHEET 7A FOR EXISTING IMPROVEMENTS WITHIN 400' OF THE PROPOSED WELL DISTURBANCE.

PDOP = 3.6

NAD 83 (TARGET BOTTOM HOLE)	NAD 83 (SURFACE LOCATION)
LATITUDE = 39°36'35.28" (39.609800)	LATITUDE = 39°36'54.30" (39.615083)
LONGITUDE = 108°04'40.38" (108.077883)	LONGITUDE = 108°04'44.58" (108.079050)
NAD 27 (TARGET BOTTOM HOLE)	NAD 27 (SURFACE LOCATION)
LATITUDE = 39°36'35.36" (39.609822)	LATITUDE = 39°36'54.39" (39.615108)
LONGITUDE = 108°04'38.10" (108.077250)	LONGITUDE = 108°04'42.30" (108.078417)