

Company Petroleum Management, LLC

Well Ole 11-24

Field Wattenberg

County Weld State Colorado

Location 300 FNL & 430' FWL  
NW NW  
Sec. 24, Twp. 6N, Rge. 65W

Other Services None

Permanent Datum  
Log Measured From KB  
Drilling Measured From KB

Elevation 4697  
K.B. 4713  
D.F. 4712  
G.L. 4697

Date April 12, 2006

Run Number 1

Depth Driller 3760

Depth Logger 3783

Bottom Logged Interval 3783

Top Log Interval Casing

Casing Driller 454

Casing Logger 454

Bit Size 7-7/8"

Type Fluid in Hole Chem Gel

Density / Viscosity 9.4 / 80

pH / Fluid Loss 8.5 / 5.6

Source of Sample Flowline

Rm @ Meas. Temp 3.32 @ 76° F

Rmt @ Meas. Temp 2.66 @ 76° F

Rmc @ Meas. Temp 3.97 @ 76° F

Source of Rmt / Rmc Measure / Calc

Rm @ BHT 1.45 @ 145° F

Time Circulation Stopped 1400

Time Logger on Bottom 2245

Maximum Recorded Temperature 145° F

Equipment Number 4078

Location Brighton, CO

Recorded By Ian Harris

Witnessed By Ed Holloway

Mark Scamilleo

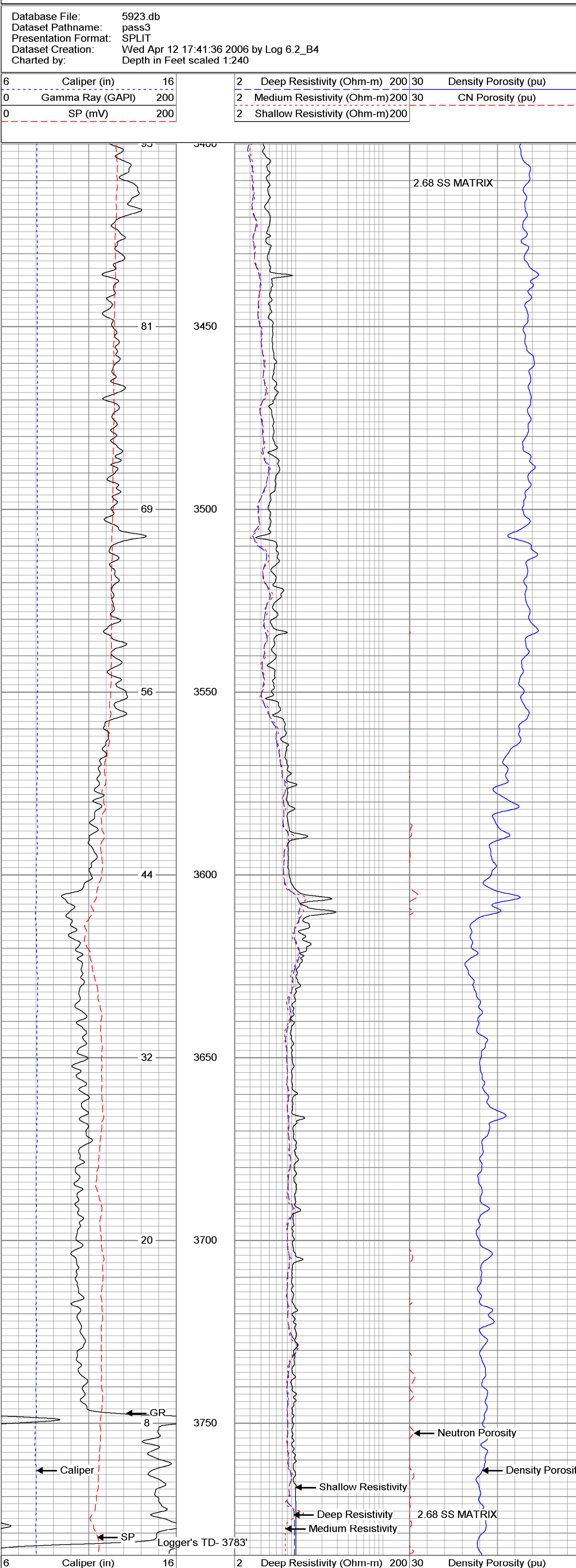
<<< Fold Here >>>

All interpretations are opinions based on inferences from electrical or other measurements and we cannot and do not guarantee the accuracy or correctness of any interpretation, and we shall not, except in the case of gross or willful negligence on our part, be liable or responsible for any loss, costs, damages, or expenses incurred or sustained by anyone resulting from any interpretation made by any of our officers, agents or employees. These interpretations are also subject to our general terms and conditions set out in our current Price Schedule.

Comments

Annular volume calculated for 4.5" casing  
Ensign Drilling Rig 16  
Thank you for using Phoenix Surveys!!  
API #: 05-123-23640-00

Database File: 5923.db  
Dataset Pathname: pass3  
Presentation Format: SPLIT  
Dataset Creation: Wed Apr 12 17:41:36 2006 by Log 6.2\_B4  
Charted by: Depth in Feet scaled 1:240



Database File: 5923.db  
Dataset Pathname: pass3  
Presentation Format: PORO40  
Dataset Creation: Wed Apr 12 17:41:36 2006 by Log 6.2\_B4  
Charted by: Depth in Feet scaled 1:240

