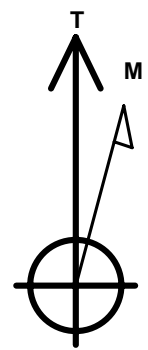
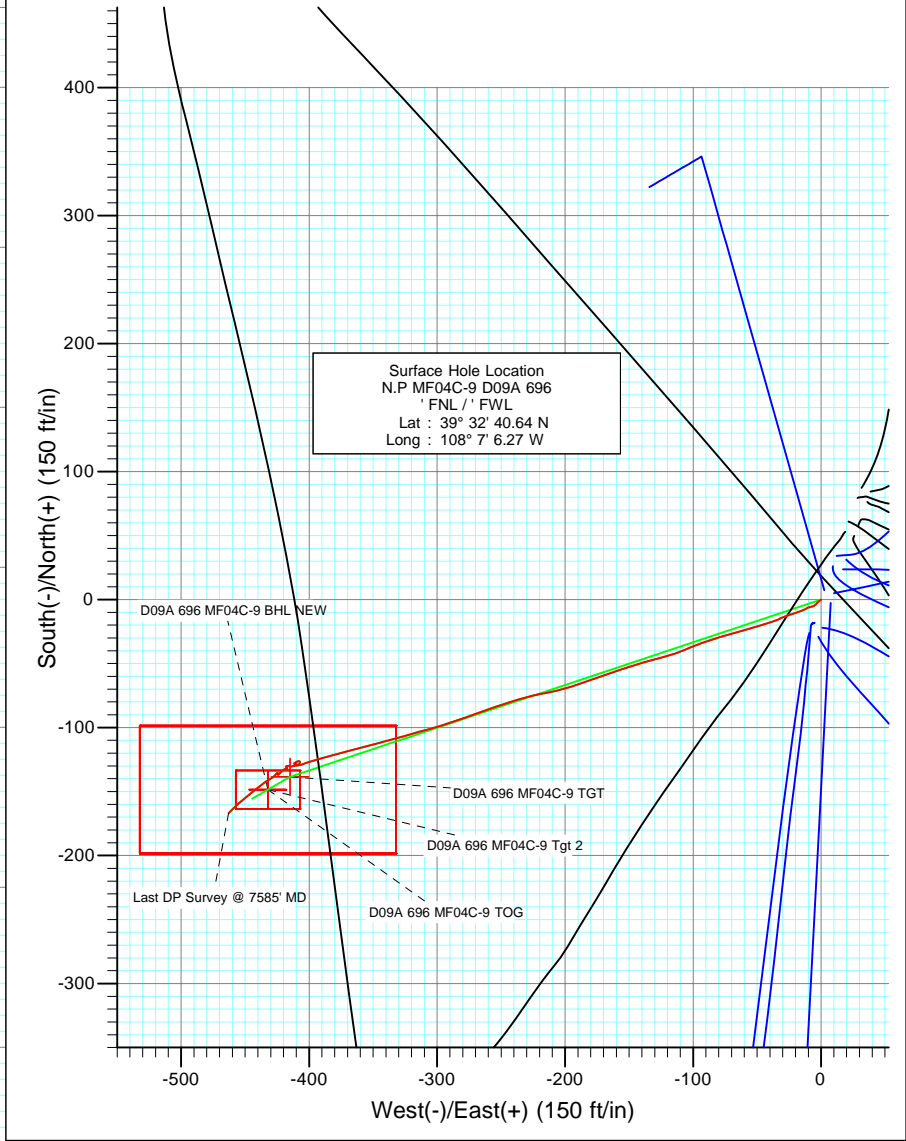
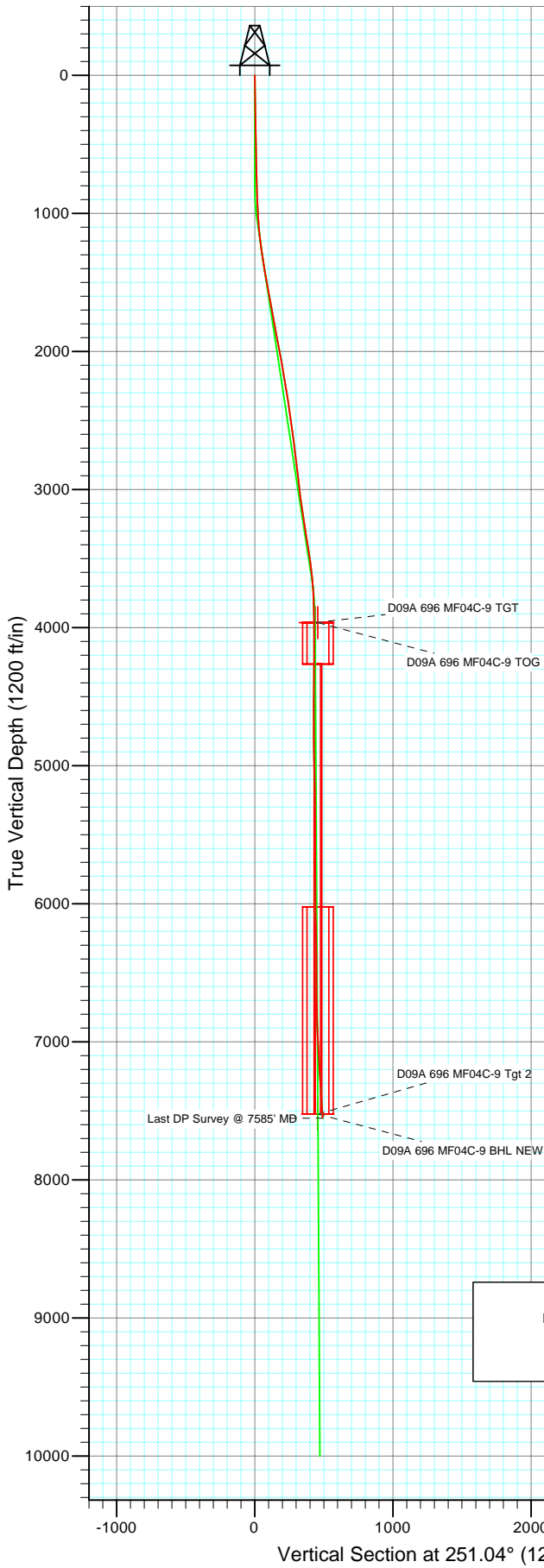




Project: North Piceance
 Site: D09A 696 Pad (NWNW S9-T6S-R96W)
 Well: N.P MF04C-9 D09A 696
 Wellbore: DD
 Design: Final



Azimuths to True North
 Magnetic North: 10.71°
 Magnetic Field
 Strength: 52533.5snT
 Dip Angle: 65.83°
 Date: 1/7/2009
 Model: IGRF200510

DESIGN DETAILS: DD

85606, 95010; LR
 KBE @ 5673.0ft (Patterson 182)

Target	Azimuth	Origin	N/S	E/W	From TVD
No Target (Freehand)	251.04	Slot	0.0	0.0	0.0

Cathedral Energy Services

Survey Report

Company: EnCana Oil & Gas (USA) Inc	Local Co-ordinate Reference: Well N.P MF04C-9 D09A 696
Project: North Piceance	TVD Reference: KBE @ 5673.0ft (Patterson 182)
Site: D09A 696 Pad (NWNW S9-T6S-R96W)	MD Reference: KBE @ 5673.0ft (Patterson 182)
Well: N.P MF04C-9 D09A 696	North Reference: True
Wellbore: DD	Survey Calculation Method: Minimum Curvature
Design: DD	Database: EDM 2003.21 US Multi Users DB

Project North Piceance		
Map System: US State Plane 1983	System Datum: Mean Sea Level	
Geo Datum: North American Datum 1983		
Map Zone: Colorado Central Zone		

Site D09A 696 Pad (NWNW S9-T6S-R96W)					
Site Position:		Northing: 1,633,961.07 ft	Latitude: 39° 32' 41.24 N		
From: Lat/Long		Easting: 2,261,724.13 ft	Longitude: 108° 7' 6.00 W		
Position Uncertainty: 0.0 ft		Slot Radius: in	Grid Convergence: -1.65 °		

Well N.P MF04C-9 D09A 696					
Well Position	+N/-S 0.0 ft	Northing: 1,633,900.72 ft	Latitude: 39° 32' 40.64 N		
	+E/-W 0.0 ft	Easting: 2,261,700.92 ft	Longitude: 108° 7' 6.27 W		
Position Uncertainty	0.0 ft	Wellhead Elevation: ft	Ground Level: 5,649.0 ft		

Wellbore DD					
Magnetics	Model Name	Sample Date	Declination (°)	Dip Angle (°)	Field Strength (nT)
	IGRF200510	1/7/2009	10.71	65.83	52,533

Design DD					
Audit Notes:					
Version: 1.0	Phase: ACTUAL	Tie On Depth: 0.0			
Vertical Section:	Depth From (TVD) (ft)	+N/-S (ft)	+E/-W (ft)	Direction (°)	
	0.0	0.0	0.0	251.04	

Survey Program Date 1/13/2009					
From (ft)	To (ft)	Survey (Wellbore)	Tool Name	Description	
202.0	7,585.0	Survey #1 (DD)	MWD	Geolink MWD	

Survey									
Measured Depth (ft)	Inclination (°)	Azimuth (°)	Vertical Depth (ft)	+N/-S (ft)	+E/-W (ft)	Vertical Section (ft)	Dogleg Rate (°/100ft)	Build Rate (°/100ft)	Formations / Comments
0.0	0.00	0.00	0.0	0.0	0.0	0.0	0.00	0.00	
202.0	1.80	228.60	202.0	-2.1	-2.4	2.9	0.89	0.89	
233.0	1.60	220.40	233.0	-2.7	-3.0	3.8	1.01	-0.65	
262.0	1.50	224.50	261.9	-3.3	-3.6	4.4	0.51	-0.34	
293.0	1.40	225.20	292.9	-3.9	-4.1	5.1	0.33	-0.32	
324.0	1.10	239.20	323.9	-4.3	-4.6	5.8	1.37	-0.97	
355.0	0.80	231.80	354.9	-4.6	-5.1	6.3	1.04	-0.97	
385.0	0.90	238.60	384.9	-4.8	-5.4	6.7	0.47	0.33	
416.0	0.90	253.00	415.9	-5.0	-5.9	7.2	0.73	0.00	
447.0	1.00	246.60	446.9	-5.2	-6.3	7.7	0.47	0.32	
477.0	0.70	251.00	476.9	-5.4	-6.8	8.1	1.02	-1.00	
509.0	1.00	250.90	508.9	-5.5	-7.2	8.6	0.94	0.94	
541.0	1.10	251.80	540.9	-5.7	-7.8	9.2	0.32	0.31	

Cathedral Energy Services

Survey Report

Company:	EnCana Oil & Gas (USA) Inc	Local Co-ordinate Reference:	Well N.P MF04C-9 D09A 696
Project:	North Piceance	TVD Reference:	KBE @ 5673.0ft (Patterson 182)
Site:	D09A 696 Pad (NWNW S9-T6S-R96W)	MVD Reference:	KBE @ 5673.0ft (Patterson 182)
Well:	N.P MF04C-9 D09A 696	North Reference:	True
Wellbore:	DD	Survey Calculation Method:	Minimum Curvature
Design:	DD	Database:	EDM 2003.21 US Multi Users DB

Survey									
Measured Depth (ft)	Inclination (°)	Azimuth (°)	Vertical Depth (ft)	+N/-S (ft)	+E/-W (ft)	Vertical Section (ft)	Dogleg Rate (°/100ft)	Build Rate (°/100ft)	Formations / Comments
573.0	1.00	260.40	572.9	-5.9	-8.3	9.8	0.58	-0.31	
604.0	1.10	264.00	603.9	-5.9	-8.9	10.3	0.39	0.32	
636.0	1.40	257.40	635.9	-6.1	-9.6	11.0	1.04	0.94	
668.0	1.20	241.10	667.9	-6.3	-10.3	11.7	1.31	-0.62	
699.0	1.10	236.90	698.9	-6.6	-10.8	12.4	0.42	-0.32	
731.0	1.10	245.20	730.9	-6.9	-11.3	13.0	0.50	0.00	
763.0	1.00	233.40	762.9	-7.2	-11.8	13.5	0.74	-0.31	
794.0	1.40	240.80	793.8	-7.6	-12.4	14.2	1.38	1.29	
858.0	2.00	247.90	857.8	-8.4	-14.1	16.0	0.99	0.94	
921.0	2.50	252.20	920.8	-9.2	-16.4	18.5	0.84	0.79	
985.0	3.30	250.90	984.7	-10.2	-19.5	21.8	1.25	1.25	
1,048.0	4.00	252.30	1,047.6	-11.5	-23.3	25.8	1.12	1.11	
1,112.0	5.40	246.50	1,111.3	-13.4	-28.2	31.0	2.31	2.19	
1,175.0	5.90	247.80	1,174.0	-15.8	-33.9	37.2	0.82	0.79	
1,239.0	7.20	252.30	1,237.6	-18.2	-40.8	44.5	2.18	2.03	
1,302.0	9.20	254.70	1,300.0	-20.8	-49.4	53.5	3.22	3.17	
1,429.0	9.90	253.50	1,425.2	-26.5	-69.6	74.5	0.57	0.55	
1,500.0	9.60	253.70	1,495.2	-29.9	-81.2	86.5	0.43	-0.42	
1,559.0	10.00	249.20	1,553.3	-33.1	-90.7	96.5	1.46	0.68	
1,654.0	10.00	247.90	1,646.9	-39.2	-106.0	113.0	0.24	0.00	
1,749.0	10.80	254.60	1,740.3	-44.6	-122.3	130.1	1.53	0.84	
1,844.0	10.50	254.00	1,833.7	-49.4	-139.2	147.7	0.34	-0.32	
1,939.0	10.80	251.20	1,927.1	-54.6	-155.9	165.2	0.63	0.32	
2,035.0	10.40	251.40	2,021.4	-60.3	-172.6	182.9	0.42	-0.42	
2,130.0	10.20	250.10	2,114.9	-65.9	-188.7	199.9	0.32	-0.21	
2,225.0	9.60	257.90	2,208.5	-70.4	-204.3	216.1	1.54	-0.63	
2,320.0	9.10	256.60	2,302.2	-73.8	-219.4	231.5	0.57	-0.53	
2,416.0	9.10	255.70	2,397.0	-77.5	-234.1	246.6	0.15	0.00	
2,511.0	7.90	251.30	2,491.0	-81.4	-247.6	260.6	1.44	-1.26	
2,606.0	7.30	248.70	2,585.1	-85.7	-259.4	273.2	0.73	-0.63	
2,701.0	7.40	251.90	2,679.3	-89.8	-270.8	285.3	0.44	0.11	
2,796.0	6.40	251.30	2,773.7	-93.4	-281.7	296.7	1.06	-1.05	
2,892.0	6.40	251.40	2,869.1	-96.8	-291.8	307.4	0.01	0.00	
2,987.0	6.80	254.50	2,963.4	-100.0	-302.3	318.3	0.56	0.42	
3,082.0	8.00	254.40	3,057.6	-103.3	-314.0	330.6	1.26	1.26	
3,177.0	8.30	253.00	3,151.7	-107.1	-327.0	344.0	0.38	0.32	
3,273.0	9.60	256.20	3,246.5	-111.0	-341.4	358.9	1.45	1.35	
3,368.0	8.90	255.60	3,340.3	-114.7	-356.2	374.1	0.74	-0.74	
3,463.0	8.30	253.90	3,434.2	-118.5	-369.9	388.3	0.69	-0.63	
3,558.0	8.10	255.00	3,528.2	-122.1	-382.9	401.8	0.27	-0.21	
3,654.0	6.40	254.50	3,623.5	-125.3	-394.6	413.9	1.77	-1.77	
3,749.0	3.90	249.20	3,718.1	-127.8	-402.7	422.4	2.68	-2.63	
3,844.0	1.60	254.30	3,813.0	-129.3	-407.0	427.0	2.43	-2.42	
3,939.0	0.80	313.40	3,907.9	-129.2	-408.8	428.6	1.45	-0.84	
4,035.0	0.60	280.70	4,003.9	-128.7	-409.8	429.4	0.46	-0.21	
4,130.0	1.10	275.60	4,098.9	-128.5	-411.2	430.6	0.53	0.53	
4,225.0	1.20	51.10	4,193.9	-127.8	-411.3	430.5	2.24	0.11	
4,320.0	1.00	63.70	4,288.9	-126.8	-409.8	428.8	0.33	-0.21	
4,415.0	0.80	79.90	4,383.9	-126.3	-408.4	427.3	0.34	-0.21	
4,511.0	0.30	115.80	4,479.9	-126.3	-407.5	426.4	0.61	-0.52	
4,606.0	0.40	150.90	4,574.9	-126.7	-407.1	426.2	0.24	0.11	
4,701.0	0.80	200.60	4,669.9	-127.6	-407.2	426.6	0.65	0.42	
4,796.0	1.20	219.60	4,764.9	-129.0	-408.1	427.8	0.54	0.42	

Cathedral Energy Services

Survey Report

Company:	EnCana Oil & Gas (USA) Inc	Local Co-ordinate Reference:	Well N.P MF04C-9 D09A 696
Project:	North Piceance	TVD Reference:	KBE @ 5673.0ft (Patterson 182)
Site:	D09A 696 Pad (NWNW S9-T6S-R96W)	MD Reference:	KBE @ 5673.0ft (Patterson 182)
Well:	N.P MF04C-9 D09A 696	North Reference:	True
Wellbore:	DD	Survey Calculation Method:	Minimum Curvature
Design:	DD	Database:	EDM 2003.21 US Multi Users DB

Survey									
Measured Depth (ft)	Inclination (°)	Azimuth (°)	Vertical Depth (ft)	+N/-S (ft)	+E/-W (ft)	Vertical Section (ft)	Dogleg Rate (°/100ft)	Build Rate (°/100ft)	Formations / Comments
4,892.0	0.60	273.30	4,860.8	-129.7	-409.2	429.2	1.01	-0.62	
4,987.0	1.20	268.40	4,955.8	-129.7	-410.7	430.6	0.64	0.63	
5,082.0	1.80	250.10	5,050.8	-130.3	-413.1	433.0	0.80	0.63	
5,177.0	0.80	313.20	5,145.8	-130.3	-415.0	434.8	1.69	-1.05	
5,272.0	0.70	271.70	5,240.8	-129.9	-416.0	435.7	0.57	-0.11	
5,368.0	1.10	244.60	5,336.8	-130.2	-417.5	437.1	0.60	0.42	
5,463.0	0.40	94.00	5,431.8	-130.7	-418.0	437.7	1.54	-0.74	
5,495.0	0.70	125.10	5,463.8	-130.8	-417.7	437.5	1.29	0.94	
5,558.0	0.70	150.90	5,526.8	-131.3	-417.2	437.2	0.50	0.00	
5,653.0	1.10	183.60	5,621.7	-132.8	-417.0	437.5	0.67	0.42	
5,748.0	0.90	2.40	5,716.7	-132.9	-417.0	437.6	2.11	-0.21	
5,843.0	0.40	295.10	5,811.7	-132.0	-417.3	437.5	0.88	-0.53	
5,939.0	0.40	267.90	5,907.7	-131.9	-417.9	438.1	0.20	0.00	
6,034.0	1.00	237.60	6,002.7	-132.4	-418.9	439.2	0.72	0.63	
6,129.0	1.30	233.30	6,097.7	-133.4	-420.5	441.0	0.33	0.32	
6,224.0	1.80	224.60	6,192.7	-135.2	-422.4	443.4	0.58	0.53	
6,319.0	0.90	213.00	6,287.6	-136.8	-423.9	445.3	0.99	-0.95	
6,414.0	1.00	359.50	6,382.6	-136.6	-424.3	445.6	1.92	0.11	
6,510.0	0.30	344.30	6,478.6	-135.6	-424.3	445.4	0.74	-0.73	
6,605.0	0.70	237.30	6,573.6	-135.6	-424.9	445.9	0.88	0.42	
6,795.0	1.60	220.60	6,763.6	-138.3	-427.6	449.3	0.50	0.47	
6,890.0	2.10	244.40	6,858.5	-140.0	-430.0	452.2	0.95	0.53	
6,985.0	2.50	236.30	6,953.5	-141.9	-433.3	455.9	0.54	0.42	
7,080.0	3.10	231.30	7,048.3	-144.7	-437.1	460.4	0.68	0.63	
7,175.0	3.60	230.30	7,143.2	-148.2	-441.4	465.6	0.53	0.53	
7,270.0	3.50	233.80	7,238.0	-151.8	-446.0	471.1	0.25	-0.11	
7,366.0	4.00	229.80	7,333.8	-155.7	-450.9	477.0	0.59	0.52	
7,460.0	4.10	225.20	7,427.6	-160.2	-455.8	483.1	0.36	0.11	
7,555.0	4.70	228.10	7,522.3	-165.2	-461.1	489.8	0.67	0.63	
7,585.0	4.60	224.00	7,552.2	-166.9	-462.9	492.0	1.16	-0.33	Last DP Survey @ 7585' MD

Cathedral Energy Services

Survey Report

Company: EnCana Oil & Gas (USA) Inc	Local Co-ordinate Reference: Well N.P MF04C-9 D09A 696
Project: North Piceance	TVD Reference: KBE @ 5673.0ft (Patterson 182)
Site: D09A 696 Pad (NWNW S9-T6S-R96W)	MD Reference: KBE @ 5673.0ft (Patterson 182)
Well: N.P MF04C-9 D09A 696	North Reference: True
Wellbore: DD	Survey Calculation Method: Minimum Curvature
Design: DD	Database: EDM 2003.21 US Multi Users DB

Targets									
Target Name	Dip Angle	Dip Dir.	TVD	+N/-S	+E/-W	Northing	Easting	Latitude	Longitude
- hit/miss target	(°)	(°)	(ft)	(ft)	(ft)	(ft)	(ft)		
- Shape									
D09A 696 MF04C-9 TG` - survey misses target center by 11.1ft at 3994.1ft MD (3963.0 TVD, -128.8 N, -409.4 E) - Point	0.00	0.00	3,963.0	-138.5	-414.9	1,633,774.23	2,261,282.20	39° 32' 39.27 N	108° 7' 11.57 W
D09A 696 MF04C-9 BHI - survey misses target center by 33.3ft at 7553.2ft MD (7520.5 TVD, -165.1 N, -461.0 E) - Rectangle (sides W30.0 H50.0 D0.0)	0.00	0.00	7,523.0	-148.5	-432.2	1,633,764.75	2,261,264.62	39° 32' 39.17 N	108° 7' 11.79 W
D09A 696 MF04C-9 Tgt - survey misses target center by 33.3ft at 7553.2ft MD (7520.5 TVD, -165.1 N, -461.0 E) - Rectangle (sides W100.0 H200.0 D0.0)	0.00	0.00	7,523.0	-148.5	-432.2	1,633,764.75	2,261,264.62	39° 32' 39.17 N	108° 7' 11.79 W
D09A 696 MF04C-9 TO` - survey misses target center by 30.1ft at 3994.2ft MD (3963.1 TVD, -128.8 N, -409.4 E) - Rectangle (sides W100.0 H200.0 D300.0)	0.00	0.00	3,963.0	-148.5	-432.2	1,633,764.75	2,261,264.62	39° 32' 39.17 N	108° 7' 11.79 W

Survey Annotations				
Measured Depth	Vertical Depth	Local Coordinates		Comment
(ft)	(ft)	+N/-S (ft)	+E/-W (ft)	
7,585.0	7,552.2	-166.9	-462.9	Last DP Survey @ 7585' MD

Checked By: _____	Approved By: _____	Date: _____
-------------------	--------------------	-------------