

T5S, R95W, 6th P.M.

Encana OIL & GAS (USA) INC.

Well location, N. PARACHUTE EMF01C-20 F17 595 (SURFACE LOCATION), located as shown in the SE 1/4 NW 1/4 of Section 17, T5S, R95W, 6th P.M., Garfield County, Colorado.

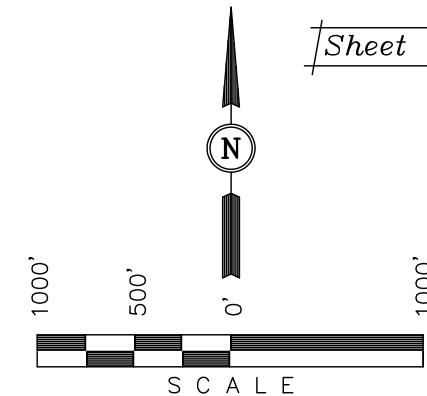
BASIS OF ELEVATION

SPOT ELEVATION AT THE NORTHWEST CORNER OF SECTION 30, T5S, R95W, 6th P.M. TAKEN FROM THE FORKED GULCH QUADRANGLE, COLORADO, GARFIELD COUNTY, 7.5 MINUTE SERIES (TOPOGRAPHICAL MAP) PUBLISHED BY THE UNITED STATES DEPARTMENT OF THE INTERIOR, GEOLOGICAL SURVEY. SAID ELEVATION IS MARKED AS BEING 5966 FEET.

BASIS OF BEARINGS

BASIS OF BEARINGS IS A G.P.S. OBSERVATION.

Sheet 1i of 11



CERTIFICATE

THIS IS TO CERTIFY THAT THE ABOVE PLAT WAS PREPARED FROM FIELD NOTES OF ACTUAL SURVEYS MADE BY ME OR UNDER MY SUPERVISION AND THAT THE SAME ARE TRUE AND CORRECT TO THE BEST OF MY KNOWLEDGE AND BELIEF.

REGISTERED LAND SURVEYOR
REGISTRATION NO. 17492
STATE OF COLORADO

Revised: 02-14-11 D.R.B.
Revised: 11-17-10 D.R.B.
Revised: 10-14-10 D.R.B.

UINTAH ENGINEERING & LAND SURVEYING
85 SOUTH 200 EAST - VERNAL, UTAH 84078
(435) 789-1017

SCALE 1" = 1000'	DATE SURVEYED: 09-21-10	DATE DRAWN: 10-10-10
PARTY G.O. B.J. D.R.B.	REFERENCES G.L.O. PLAT	
WEATHER WARM	FILE Encana OIL & GAS (USA) INC.	

S89°58'22"W - 2646.50' (Meas.)

N89°56'12"W - 2635.72' (Meas.)

1916 Brass Cap
0.6' High, Steel Post
Lat: 39.621086°
Long: 108.087433°

1916 Brass Cap
1.0' High, Steel
Post
Lat: 39.621086°
Long: 108.078042°

1916 Brass Cap
1.2' High, Stones
Lat: 39.621075°
Long: 108.068686°

NOTE:
THE APPROXIMATE PROPERTY LINE BEARS
S37°E 1636' FROM THE PROPOSED WELL HEAD.
PROPERTY LINE INFORMATION WAS RECEIVED
FROM THE GARFIELD COUNTY GIS DEPARTMENT
AND HAS NOT BEEN SURVEYED.

N. PARACHUTE
EMF01C-20 F17 595

Elev. Ungraded Ground = 6328.2'
Elev. Graded Ground = 6318.7'

1916 Brass Cap
1.5' High, Steel Post
Lat: 39.613775°
Long: 108.087408°

NOTE:
THE PROPOSED BOTTOM HOLE FOR THIS WELL
IS LOCATED IN THE NE 1/4 NE 1/4 OF SECTION
20, T5S, R95W, 6th P.M. AT A DISTANCE OF
648' FNL 224' FEL. IT BEARS S35°23'38"E
4612.04' FROM THE PROPOSED WELL HEAD.

Approx. Property Line

1916 Brass Cap
2.5' High, Pile of
Stones, Steel Post
Lat: 39.612131°
Long: 108.068708°

LINE TABLE

LINE	BEARING	LENGTH
L1	N00°09'01"W	633.60'
L2	N00°08'30"W	759.00'

1916 Brass Cap
1.2' High
Lat: 39.606567°
Long: 108.078072°

1916 Brass Cap
0.3' High, Steel
Post
Lat: 39.606567°
Long: 108.068692°

True Position

N89°59'31"W - 2641.18' (Meas.)

S89°58'35"W - 2643.38' (Meas.)

NOTE:
SEE SHEET 7A FOR EXISTING
IMPROVEMENTS WITHIN 400' OF THE
PROPOSED WELL DISTURBANCE.

PDOP = 3.7

NAD 83 (SURFACE LOCATION)

LATITUDE = 39°36'54.40" (39.615111)
LONGITUDE = 108°04'44.24" (108.078956)

NAD 27 (SURFACE LOCATION)

LATITUDE = 39°36'54.48" (39.615133)
LONGITUDE = 108°04'41.96" (108.078322)

LEGEND:

└─ = 90° SYMBOL

● = PROPOSED WELL HEAD.

▲ = SECTION CORNERS LOCATED.

△ = SECTION CORNERS RE-ESTAB.
(Not Set on Ground)

W.C. 1916 Brass
Cap, 1.5' High
Steel Post
Lat: 39.604486°
Long: 108.087436°

W 1/4 Cor Sec 20
1916 Brass Cap
1.2' High
Lat: 39.599314°
Long: 108.087422°

T5S, R95W, 6th P.M.

Well location, N. PARACHUTE EMF01C-20 F17 595 (TARGET BOTTOM HOLE), located as shown in the NE 1/4 NE 1/4 of Section 20, T5S, R95W, 6th P.M., Garfield County, Colorado.

BASIS OF ELEVATION

SPOT ELEVATION AT THE NORTHWEST CORNER OF SECTION 30, T5S, R95W, 6th P.M. TAKEN FROM THE FORKED GULCH QUADRANGLE, COLORADO, GARFIELD COUNTY, 7.5 MINUTE SERIES (TOPOGRAPHICAL MAP) PUBLISHED BY THE UNITED STATES DEPARTMENT OF THE INTERIOR, GEOLOGICAL SURVEY. SAID ELEVATION IS MARKED AS BEING 5966 FEET.

BASIS OF BEARINGS

BASIS OF BEARINGS IS A G.P.S. OBSERVATION.

Sheet 1j of 11



CERTIFICATE

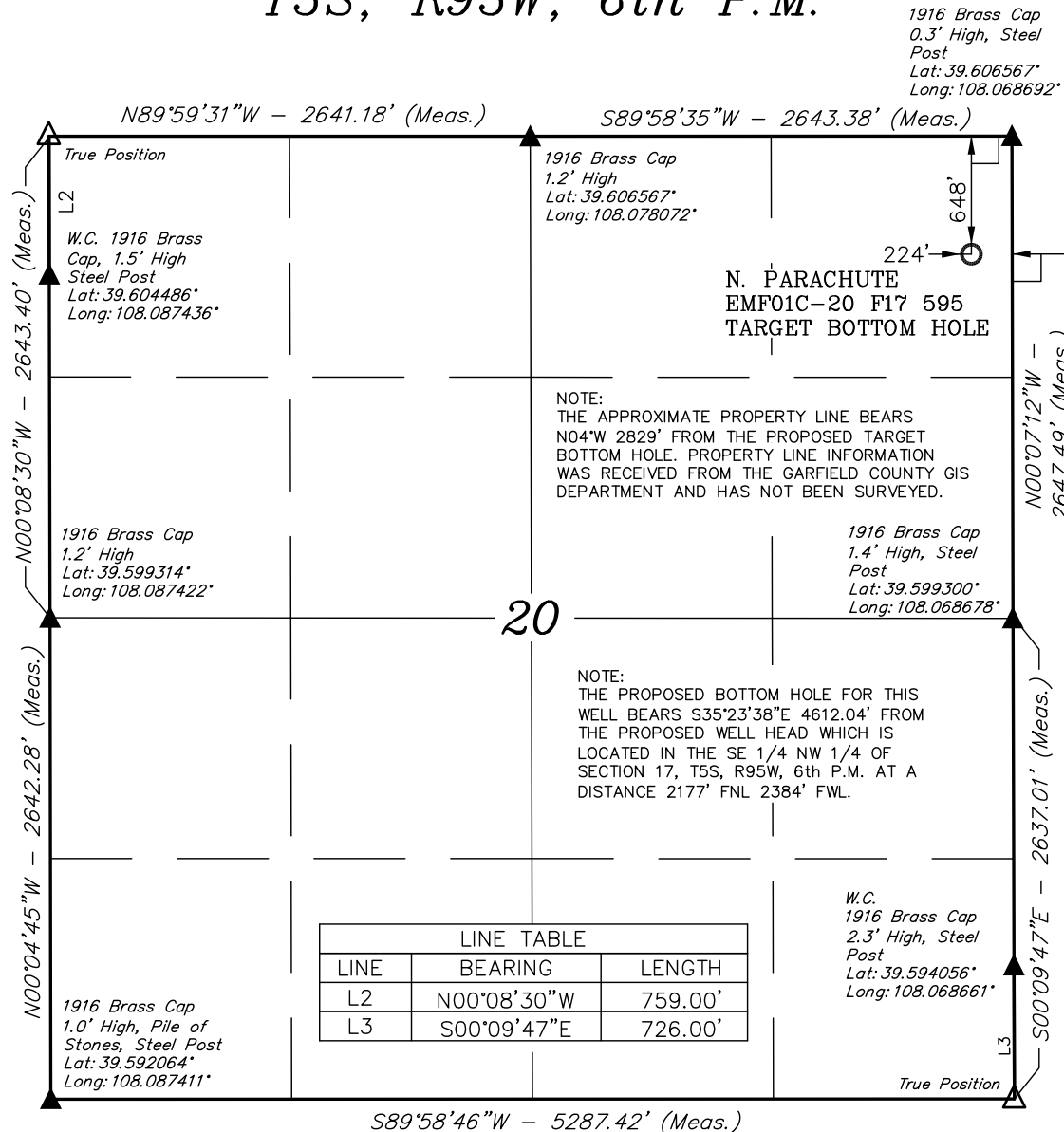
THIS IS TO CERTIFY THAT THE ABOVE PLAT WAS PREPARED FROM FIELD NOTES OF ACTUAL SURVEYS MADE BY ME OR UNDER MY SUPERVISION AND THAT THE SAME ARE TRUE AND CORRECT TO THE BEST OF MY KNOWLEDGE AND BELIEF.

REGISTERED LAND SURVEYOR
REGISTRATION NO. 17499
STATE OF COLORADO

Revised: 02-14-11 D.R.B.
Revised: 11-17-10 D.R.B.
Revised: 10-14-10 D.R.B.

UINTAH ENGINEERING & LAND SURVEYING
85 SOUTH 200 EAST - VERNAL, UTAH 84078
(435) 789-1017

SCALE 1" = 1000'	DATE SURVEYED: 09-21-10	DATE DRAWN: 10-10-10
PARTY G.O. B.J. D.R.B.	REFERENCES G.L.O. PLAT	
WEATHER WARM	FILE Encana OIL & GAS (USA) INC.	



LEGEND:

- = 90° SYMBOL
 = PROPOSED WELL HEAD.
 = SECTION CORNERS LOCATED.
 = SECTION CORNERS RE-ESTAB.
 (Not Set on Ground)

NAD 83 (TARGET BOTTOM HOLE)		
LATITUDE	=	39°36'17.24" (39.604789)
LONGITUDE	=	108°04'10.14" (108.069483)
NAD 27 (TARGET BOTTOM HOLE)		
LATITUDE	=	39°36'17.32" (39.604811)
LONGITUDE	=	108°04'07.86" (108.068850)