

T5S, R95W, 6th P.M.

Encana OIL & GAS (USA) INC.

Well location, N. PARACHUTE EMF01A-20 F17 595 (SURFACE LOCATION), located as shown in the SE 1/4 NW 1/4 of Section 17, T5S, R95W, 6th P.M., Garfield County, Colorado.

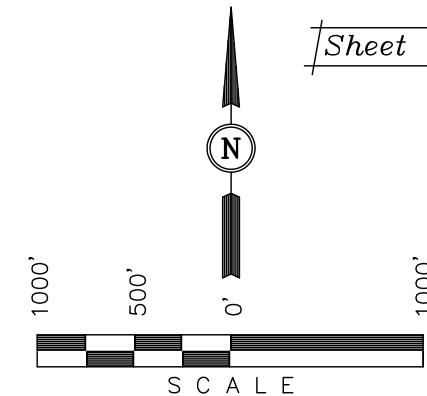
BASIS OF ELEVATION

SPOT ELEVATION AT THE NORTHWEST CORNER OF SECTION 30, T5S, R95W, 6th P.M. TAKEN FROM THE FORKED GULCH QUADRANGLE, COLORADO, GARFIELD COUNTY, 7.5 MINUTE SERIES (TOPOGRAPHICAL MAP) PUBLISHED BY THE UNITED STATES DEPARTMENT OF THE INTERIOR, GEOLOGICAL SURVEY. SAID ELEVATION IS MARKED AS BEING 5966 FEET.

BASIS OF BEARINGS

BASIS OF BEARINGS IS A G.P.S. OBSERVATION.

Sheet 1g of 11



CERTIFICATE

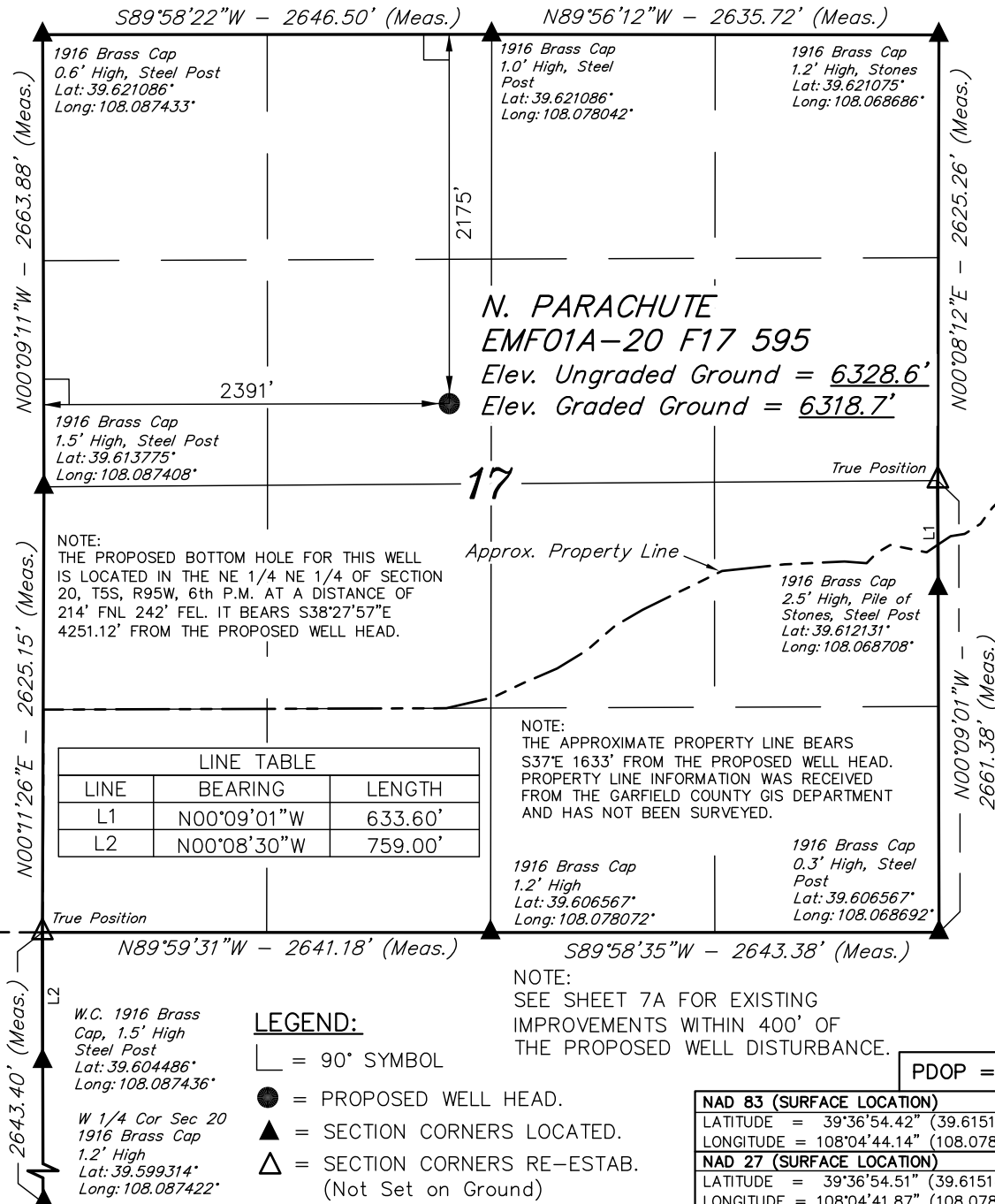
THIS IS TO CERTIFY THAT THE ABOVE PLAT WAS PREPARED FROM FIELD NOTES OF ACTUAL SURVEYS MADE BY ME OR UNDER MY SUPERVISION AND THAT THE SAME ARE TRUE AND CORRECT TO THE BEST OF MY KNOWLEDGE AND BELIEF.

REGISTERED LAND SURVEYOR
REGISTRATION NO. 417492
STATE OF COLORADO

Revised: 02-14-11 D.R.B.
Revised: 02-10-11 D.R.B.
Revised: 11-17-10 D.R.B.
Revised: 10-14-10 D.R.B.

UINTAH ENGINEERING & LAND SURVEYING
85 SOUTH 200 EAST - VERNAL, UTAH 84078
(435) 789-1017

SCALE 1" = 1000'	DATE SURVEYED: 09-21-10	DATE DRAWN: 10-10-10
PARTY G.O. B.J. D.R.B.	REFERENCES G.L.O. PLAT	
WEATHER WARM	FILE Encana OIL & GAS (USA) INC.	



LEGEND:

- └─ = 90° SYMBOL
- = PROPOSED WELL HEAD.
- ▲ = SECTION CORNERS LOCATED.
- △ = SECTION CORNERS RE-ESTAB.
(Not Set on Ground)

NOTE:
SEE SHEET 7A FOR EXISTING
IMPROVEMENTS WITHIN 400' OF
THE PROPOSED WELL DISTURBANCE.

PDOP = 3.7

NAD 83 (SURFACE LOCATION)	
LATITUDE	= 39°36'54.42" (39.615117)
LONGITUDE	= 108°04'44.14" (108.078928)
NAD 27 (SURFACE LOCATION)	
LATITUDE	= 39°36'54.51" (39.615142)
LONGITUDE	= 108°04'41.87" (108.078297)

T5S, R95W, 6th P.M.

Well location, N. PARACHUTE EMF01A-20 F17 595 (TARGET BOTTOM HOLE), located as shown in the NE 1/4 NE 1/4 of Section 20, T5S, R95W, 6th P.M., Garfield County, Colorado.

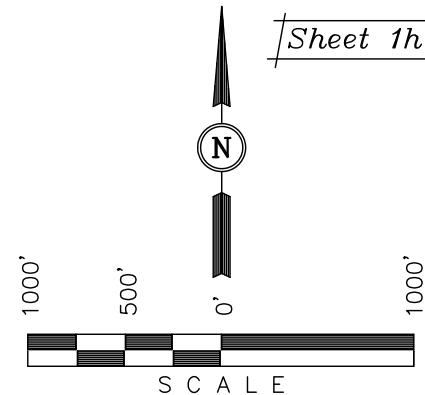
BASIS OF ELEVATION

SPOT ELEVATION AT THE NORTHWEST CORNER OF SECTION 30, T5S, R95W, 6th P.M. TAKEN FROM THE FORKED GULCH QUADRANGLE, COLORADO, GARFIELD COUNTY, 7.5 MINUTE SERIES (TOPOGRAPHICAL MAP) PUBLISHED BY THE UNITED STATES DEPARTMENT OF THE INTERIOR, GEOLOGICAL SURVEY. SAID ELEVATION IS MARKED AS BEING 5966 FEET.

BASIS OF BEARINGS

BASIS OF BEARINGS IS A G.P.S. OBSERVATION.

Sheet 1h of 11



CERTIFICATE

THIS IS TO CERTIFY THAT THE ABOVE PLAT WAS PREPARED FROM FIELD NOTES OF ACTUAL SURVEYS MADE BY ME OR UNDER MY SUPERVISION AND THAT THE SAME ARE TRUE AND CORRECT TO THE BEST OF MY KNOWLEDGE AND BELIEF.

REGISTERED LAND SURVEYOR
REGISTRATION NO. 17492
STATE OF COLORADO

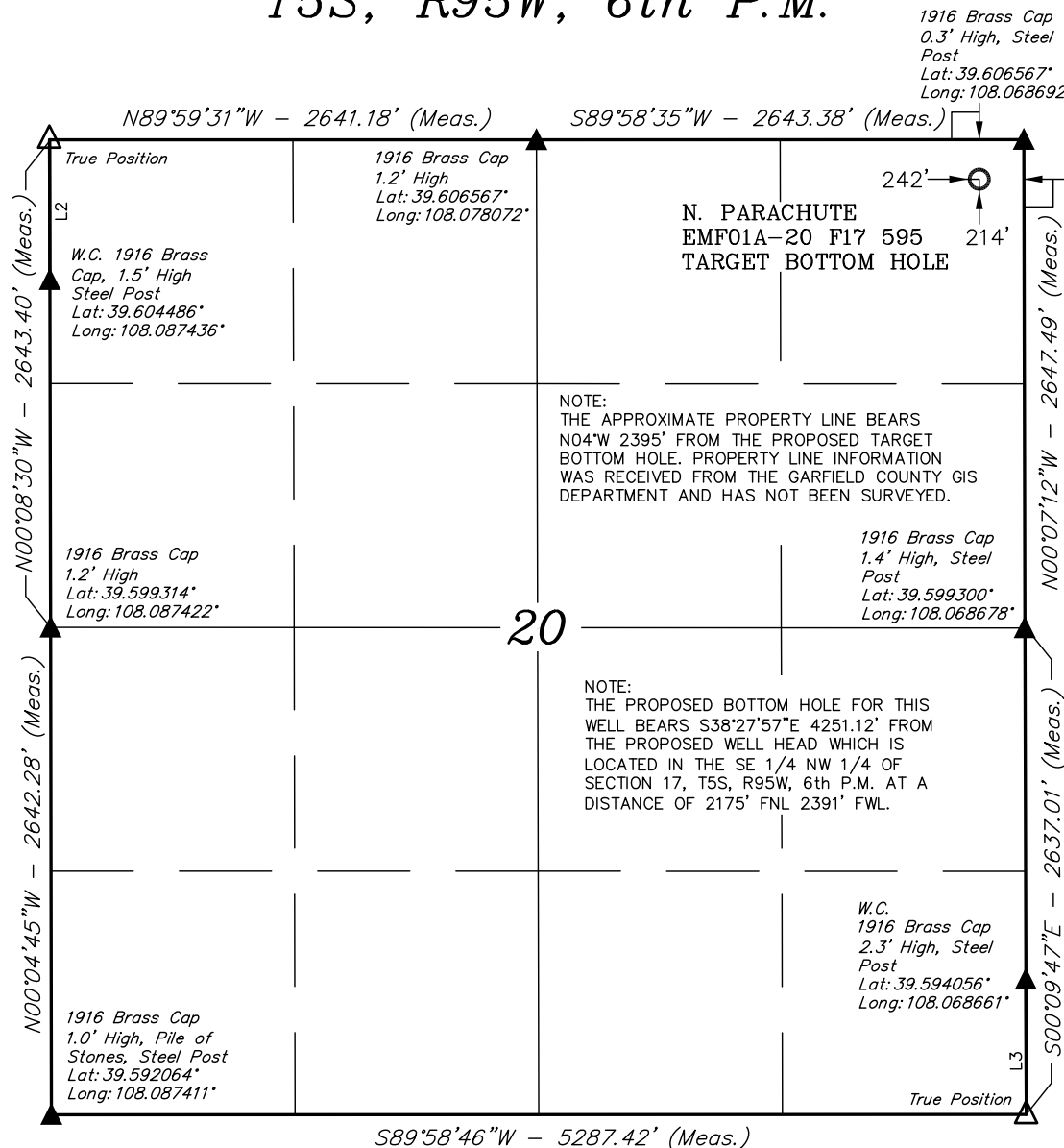
Revised: 02-14-11 D.R.B.

Revised: 11-17-10 D.R.B.

Revised: 10-14-10 D.R.B.

UINTAH ENGINEERING & LAND SURVEYING
85 SOUTH 200 EAST - VERNAL, UTAH 84078
(435) 789-1017

SCALE 1" = 1000'	DATE SURVEYED: 09-21-10	DATE DRAWN: 10-10-10
PARTY G.O. B.J. D.R.B.	REFERENCES G.L.O. PLAT	
WEATHER WARM	FILE Encana OIL & GAS (USA) INC.	



LEGEND:

— = 90° SYMBOL

● = PROPOSED WELL HEAD.

▲ = SECTION CORNERS LOCATED.

△ = SECTION CORNERS RE-ESTAB.
(Not Set on Ground)

LINE TABLE		
LINE	BEARING	LENGTH
L2	N00°08'30"W	759.00'
L3	S00°09'47"E	726.00'

NAD 83 (TARGET BOTTOM HOLE)

LATITUDE = 39°36'21.53" (39.605981)

LONGITUDE = 108°04'10.38" (108.069550)

NAD 27 (TARGET BOTTOM HOLE)

LATITUDE = 39°36'21.61" (39.606003)

LONGITUDE = 108°04'08.10" (108.068917)