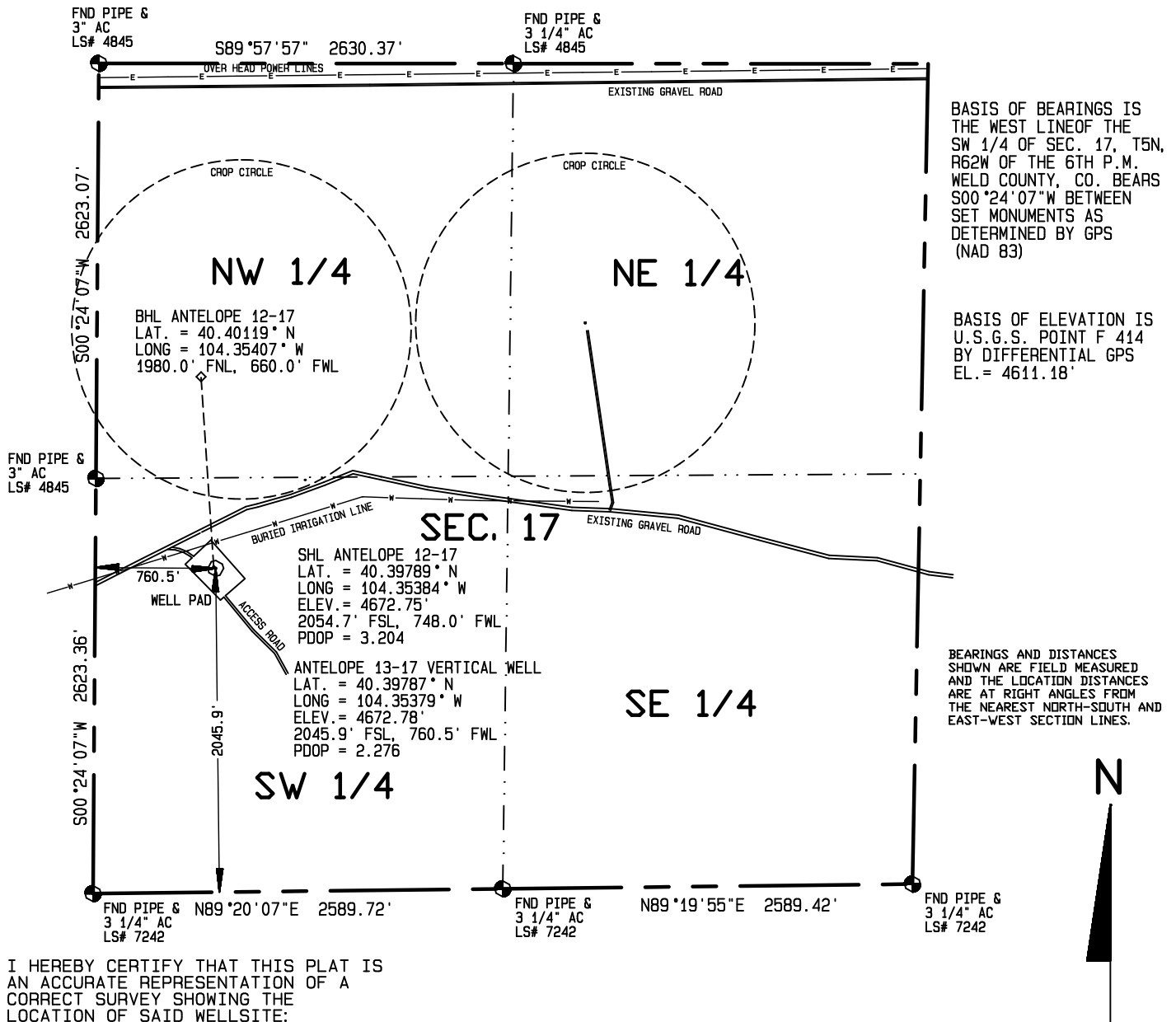


Improvements within 400 feet of the location include: A buried irrigation line passes 160' north and a 2 track gravel road passes 244' northwest. An oil lease road passes 50' west.



I HEREBY CERTIFY THAT THIS PLAT IS AN ACCURATE REPRESENTATION OF A CORRECT SURVEY SHOWING THE LOCATION OF SAID WELLSITE:

1000 500 0 1000

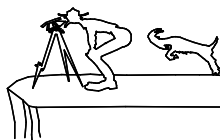


Scale 1" = 1000'

Dan Griggs PLS# 38018

CONTRACT SURVEYORS, LTD.
COMPLETE SURVEYING AND GLOBAL POSITIONING

2133 SOUTH BELLAIRE STREET #14
DENVER COLORADO 80222
(303) 756-3695



DATE OF FIELD WORK:

3 MARCH, 2011

DATE OF DRAWING:

8 MARCH, 2011

ANTELOPE 13-17 PAD SITE

NW 1/4, SW 1/4 SEC. 17, T5N, R62W

BONANZA CREEK ENERGY OPERATING COMPANY, LLC

CSL# 10104-38 ORIGINAL
CSL# 11104-13 REVISED

WELD COUNTY, COLORADO