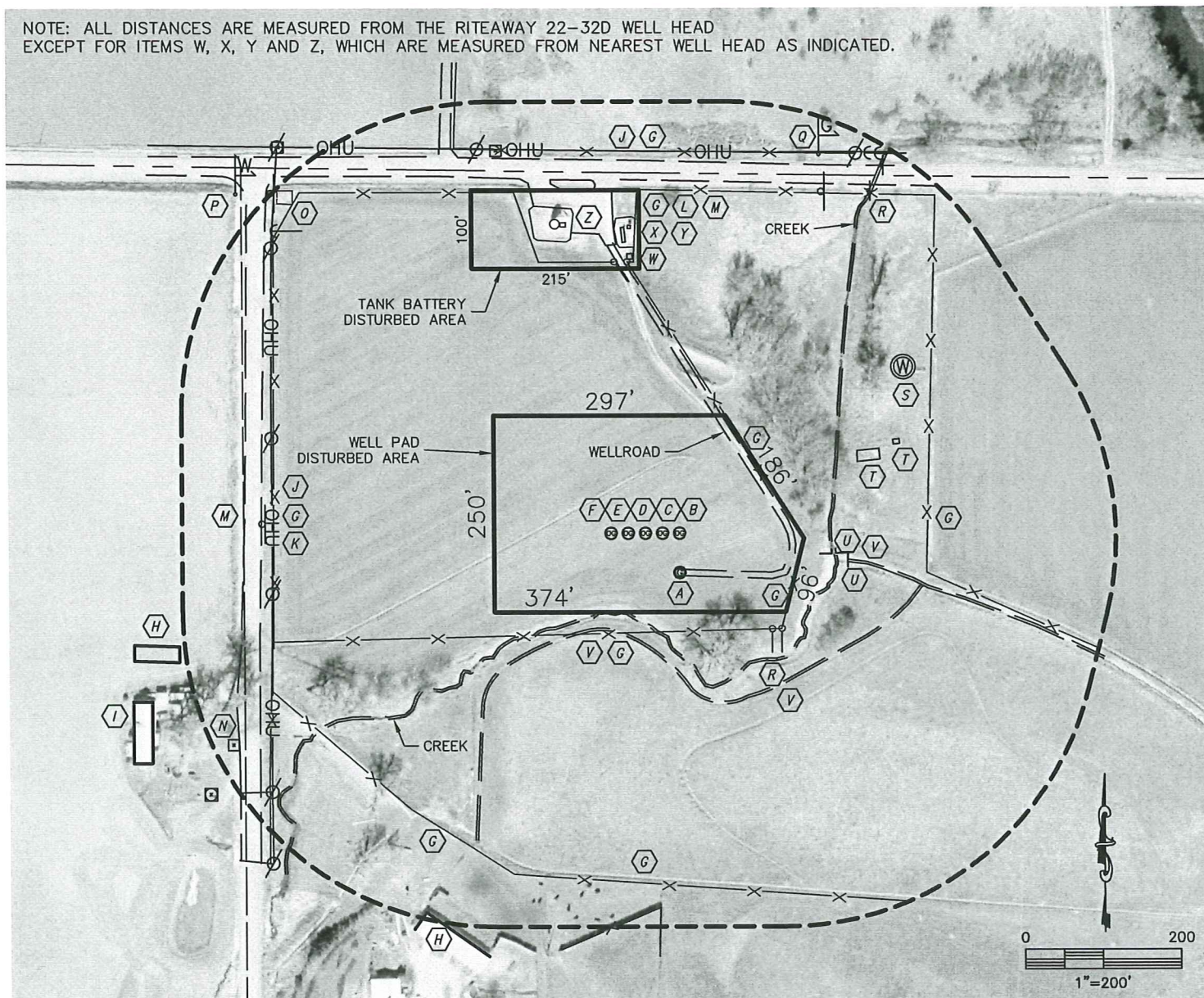


# LOCATION DRAWING

## RITEAWAY NW-32 MULTI-WELL PAD

SECTION: 32  
TOWNSHIP: 5N  
RANGE: 67W

NOTE: ALL DISTANCES ARE MEASURED FROM THE RITEAWAY 22-32D WELL HEAD  
EXCEPT FOR ITEMS W, X, Y AND Z, WHICH ARE MEASURED FROM NEAREST WELL HEAD AS INDICATED.



- IMPROVEMENTS:**
- |                                                                            |                                                   |
|----------------------------------------------------------------------------|---------------------------------------------------|
| (A) EXISTING WELL-MILLER 32-1                                              | (N) TELEPHONE PEDESTAL 593' SW                    |
| (B) RITEAWAY 32ND                                                          | (O) VALVE SET 627' NW                             |
| (C) RITEAWAY 32JD                                                          | (P) WATER MARKER 678' NW                          |
| (D) RITEAWAY 22-32D                                                        | (Q) GAS MARKER 532' NE                            |
| (E) RITEAWAY 32AD                                                          | (R) CMP CULVERT 519'NE, 223'SE                    |
| (F) RITEAWAY 11-32D                                                        | (S) OLD BRICK WELL 393' NE                        |
| (G) FENCE 126'S, 199'SE, 168'NE, 362'E, 438'N, 487'N, 476'W, 457'SW, 444'S | (T) OLD CONCRETE FOUNDATION 287'NE, 338'NE        |
| (H) METAL SHED 559'SW, 615'WSW                                             | (U) CONCRETE IRRIGATION STRUCTURE 225', 262' ESE  |
| (I) HOUSE 668' SW                                                          | (V) DIRT IRRIGATION DITCH 263'ESE, 287'SE, 130'S  |
| (J) OVER-HEAD UTILITY 478'W, 487'N                                         | (W) BURNER 349' N (FROM RITEAWAY 32AD)            |
| (K) EAST EDGE WCR 15½ 492' W                                               | (X) SEPARATOR 371' N (FROM RITEAWAY 32AD)         |
| (L) SOUTH EDGE WCR 52 450' N                                               | (Y) METER HOUSE 388' N (FROM RITEAWAY 32AD)       |
| (M) PROPERTY LINE 459'N, 515'W                                             | (Z) OIL TANK 394' N (FROM RITEAWAY 11-32D)        |
|                                                                            | PRODUCED WATER TANK 394' N (FROM RITEAWAY 11-32D) |