

**EXXONMOBIL CORPORATION**

**HOUSTON, Texas**

PCU 296-5A8

H&P-321

## **Post Job Summary**

### **Cement Intermediate Casing**

Date Prepared: 02/17/2011  
Version: 1

Service Supervisor: BIRCHELL, DEVIN

Submitted by: M.C. Dube

**HALLIBURTON**

# HALLIBURTON

## Wellbore Geometry

| Job Tubulars      |                               |         |        |           | MD     |           | TVD    |           | Excess % | Shoe Joint Length ft |
|-------------------|-------------------------------|---------|--------|-----------|--------|-----------|--------|-----------|----------|----------------------|
| Type              | Description                   | Size in | ID in  | Wt lbm/ft | Top ft | Bottom ft | Top ft | Bottom ft |          |                      |
| Casing            | 10 3/4" Surface Casing        | 10.75   | 9.950  | 45.50     | 0      | 4,862     | 0      | 4,580     | 0        | 86.00                |
| Open Hole Section | 9 7/8" Intermediate Open Hole |         | 9.8750 |           | 4,862  | 10,007    | 4,862  | 9,677     | 100      | 0.00                 |
| Casing            | 7" Intermediate Casing        | 7.00    | 6.276  | 26.00     | 0      | 10,003    | 0      | 9,673     | 0        | 98.50                |

## Pumping Schedule

| Fluid # | Fluid Type    | Fluid Name             | Density lbm/gal | Avg Rate bbl/min | Volume    |
|---------|---------------|------------------------|-----------------|------------------|-----------|
| 1       | Spacer        | TUNED SPACER III       | 10.00           | 6.00             | 80.0 bbl  |
| 2       | Cement Slurry | New Vernal Tuned Light | 11.00           | 6.00             | 1405 sks  |
| 3       | Spacer        | Treated Water          | 8.40            | 5.00             | 382.7 bbl |

## Fluids Pumped

**Stage/Plug # 1    Fluid 1:**    TUNED SPACER III  
TUNED SPACER III - SBM (483826)  
59.8 lbm/bbl    Barite

Fluid Density:    10.00 lbm/gal  
Fluid Volume:    80.00 bbl

**Stage/Plug # 1    Fluid 2:**    New Vernal Tuned Light  
TUNED LIGHT (TM) SYSTEM  
0.2 lbm    WG-17  
0.5 lbm    D-AIR 3000  
0.5 lbm    HR-601

Fluid Weight:    11.00 lbm/gal  
Slurry Yield:    2.21 ft<sup>3</sup>/sack  
Total Mixing Fluid:    9.70 Gal  
Calculated Fill:    6,085.00 ft  
Calculated Top of Fluid:    4,345.00 ft

**Stage/Plug # 1    Fluid 3:**    Treated Water  
Displacement Fluid

Fluid Density:    8.40 lbm/gal

# HALLIBURTON

## Job Summary

### Job Information

|                                                |                          |
|------------------------------------------------|--------------------------|
| Job Start Date                                 | 2/13/2011                |
| Job MD                                         | 10,003.0 ft              |
| Job TVD                                        | 9,673.0 ft               |
| Height of Plug Container/Swage Above Rig Floor | 5.0 ft                   |
| Surface Temperature at Time of Job             | 70 degF                  |
| Mud Type                                       | Water Based Mud          |
| Name of Mud Company                            | BAROID                   |
| Actual Mud Density                             | 9 lbm/gal                |
| Mud loss while running Casing                  | 3,600.00 bbl             |
| Time Circulated before job                     | 1.00 hour(s)             |
| Mud Volume Circulated                          | 480.00 bbl               |
| Rate at Which Well was Circulated              | 8.000 bbl/min            |
| Units of Gas Detected While Circulating        | 10 API Gas Units         |
| Pipe Movement During Hole Circulation          | Rotated and Reciprocated |
| Time From End Mud Circ. to Job Start           | 16.00 minute             |
| Mud loss during Cement Job                     | 300.00 bbl               |
| Pipe Movement During Cementing                 | Reciprocated             |
| Calculated Displacement                        | 379.00 bbl               |
| Job Displaced by (rig/halco)                   | Cement Unit HP Pumps     |
| Annular flow Before Job? (Water/Gas)           | No                       |
| Annular flow After Job? (Water/Gas)            | Unknown                  |
| Length of Rat Hole                             | 3.00 ft                  |

### Cementing Equipment

|                                     |                              |
|-------------------------------------|------------------------------|
| Number of Centralizers Used         | 41                           |
| Pipe Centralization                 | Through Entire Cement Column |
| Brand of Float Equipment Used       | Weatherford                  |
| Did Float Equipment Hold?           | Yes                          |
| Plug set used?                      | Yes                          |
| Brand of Plug set used?             | Weatherford                  |
| Did Plugs Bump?                     | Yes                          |
| Calculated Pressure to Bump Plugs   | 1,100.0 psig                 |
| Brand of Stage Cementing Tools Used | Weatherford                  |

## Service Supervisor Reports

### Job Log

| Date/Time           | Activity Code                                     | Pump Rate | Cum Vol | Pressure (psig) | Comments                                                                                                              |
|---------------------|---------------------------------------------------|-----------|---------|-----------------|-----------------------------------------------------------------------------------------------------------------------|
| 02/12/2011<br>11:03 | Call Out                                          |           |         |                 | Called Crew for Job                                                                                                   |
| 02/12/2011<br>21:00 | Pre-Convoy Safety Meeting                         |           |         |                 | Discussed Possible Hazards in Route to Location                                                                       |
| 02/12/2011<br>21:30 | Depart from Service Center or Other Site          |           |         |                 | Crew Left Yard                                                                                                        |
| 02/13/2011<br>01:30 | Arrive At Loc                                     |           |         |                 |                                                                                                                       |
| 02/13/2011<br>02:00 | Wait on Customer or Customer Sub-Contractor Equip |           |         |                 | Casing Crew Rigging Down, Rig Conditioning Hole                                                                       |
| 02/13/2011<br>11:04 | Pre-Rig Up Safety Meeting                         |           |         |                 | Discussed Possible Hazards of Rigging Up                                                                              |
| 02/15/2011<br>10:30 | Rig-Up Completed                                  |           |         |                 |                                                                                                                       |
| 02/15/2011<br>18:00 | Pre-Job Safety Meeting                            |           |         |                 | Discussed safety hazards and good communication                                                                       |
| 02/15/2011<br>18:24 | Prime Pumps                                       |           |         |                 |                                                                                                                       |
| 02/15/2011<br>18:38 | Pressure Test                                     |           |         |                 | Begin High pressure test                                                                                              |
| 02/15/2011<br>18:45 | Pressure Test                                     |           |         |                 | End High Pressure. Passed pressure test. Lost 215psi~ 4.1%                                                            |
| 02/15/2011<br>18:48 | Other                                             | 5         | 80      |                 | Pump tuned spacer design 80 bbl actual 85.4 actual @10ppg 5.48ft3/sk 37.39 gal/ksk                                    |
| 02/15/2011<br>19:13 | Other                                             | 5         | 553     |                 | Pump 1405 Sk VTL 553BBL 11ppg @ 2.21ft3/sk and 9.69 gal/sk calculated stage water use 324 BBL Design 553 Actual 566.6 |
| 02/15/2011<br>21:09 | Other                                             |           |         |                 | Shut down wash lines                                                                                                  |
| 02/15/2011<br>21:12 | Drop Top Plug                                     |           |         |                 | Dropped plug an                                                                                                       |
| 02/15/2011<br>21:13 | Other                                             | 8         | 379     |                 | Displaced with water treated with Aldacide and Baracore                                                               |
| 02/15/2011<br>21:18 | Slow Rate                                         | 3         | 379     | 971.0           | Slow rate to 3 BPM 335 BBL gone                                                                                       |
| 02/15/2011<br>21:22 | Displ Reached Cmnt                                | 8         | 379     | 408.0           | Caught pressure with 49 bbl gone                                                                                      |
| 02/15/2011<br>21:45 | Slow Rate                                         | 7.5       | 379     | 988.0           | Slow rate to 7.5 BPM 232 BBL gone                                                                                     |

# HALLIBURTON

| Date/Time           | Activity Code | Pump Rate | Cum Vol | Pressure (psig) | Comments                                              |
|---------------------|---------------|-----------|---------|-----------------|-------------------------------------------------------|
| 02/15/2011<br>21:50 | Slow Rate     | 6         | 379     | 991.0           | Slow Rate to 6BPM 266 BBL gone                        |
| 02/15/2011<br>21:55 | Slow Rate     | 4         | 379     | 899.0           | Slow rate to 4 BPM 299 BBL gone                       |
| 02/15/2011<br>22:05 | Slow Rate     | 2         | 379     | 966.0           | Slow rate to 2 BPM 354 BBL gone to bump plug          |
| 02/15/2011<br>22:24 | Bump Plug     | 2         | 379     | 1022.0          | Bumped Plug @ 11922psi                                |
| 02/15/2011<br>22:29 | Check Floats  |           |         | 1400.0          | Check floats for 5 min. Floats held with 1,5 BBL back |
| 02/15/2011<br>22:31 | End Job       |           |         |                 | End Job                                               |
| 02/15/2011<br>22:35 | Other         |           |         |                 | Thank you for using Halliburton!!!!                   |

## The Road to Excellence Starts with Safety

|                                                    |                    |                                      |                           |
|----------------------------------------------------|--------------------|--------------------------------------|---------------------------|
| Sold To #: 331699                                  | Ship To #: 2753404 | Quote #:                             | Sales Order #: 7951938    |
| Customer: EXXONMOBIL CORPORATION                   |                    | Customer Rep: Murawski, Victoria     |                           |
| Well Name: PCU                                     |                    | Well #: 296-5A8                      | API/UWI #: 05103112420000 |
| Field:                                             | City (SAP): MEEKER | County/Parish: Rio Blanco            | State: Colorado           |
| Legal Description: Section 5 Township 2S Range 96W |                    |                                      |                           |
| Contractor: H&P                                    |                    | Rig/Platform Name/Num: 321           |                           |
| Job Purpose: Cement Intermediate Casing            |                    |                                      |                           |
| Well Type: Development Well                        |                    | Job Type: Cement Intermediate Casing |                           |
| Sales Person: MCNARY, GEORGE                       |                    | Srvc Supervisor: BIRCHELL, DEVIN     | MBU ID Emp #: 466993      |

## Job Personnel

| HES Emp Name             | Exp Hrs | Emp #  | HES Emp Name               | Exp Hrs | Emp #  | HES Emp Name      | Exp Hrs | Emp #  |
|--------------------------|---------|--------|----------------------------|---------|--------|-------------------|---------|--------|
| ALLRED, JARED Don        |         | 471751 | BIRCHELL, DEVIN Ray        |         | 466993 | CHANEY, DAVID E   |         | 483674 |
| MCCONKIE, TRAVIS Terry   |         | 471264 | MUTASA, SIMUKAYI Taiziveyi |         | 464970 | WHITE, KAMEREON V |         | 475856 |
| WOLFGRAMM, SHANE Brandon |         | 479670 | CRAIG DUBE                 |         | 476241 |                   |         |        |

## Equipment

| HES Unit # | Distance-1 way | HES Unit # | Distance-1 way | HES Unit # | Distance-1 way | HES Unit # | Distance-1 way |
|------------|----------------|------------|----------------|------------|----------------|------------|----------------|
| 10719778   | 45 mile        | 10804583   | 45 mile        | 10948689   | 45 mile        | 11076824   | 45 mile        |
| 11338213   | 45 mile        | 11410668   | 45 mile        |            |                |            |                |

## Job Hours

| Date  | On Location Hours                          | Operating Hours | Date | On Location Hours | Operating Hours | Date | On Location Hours | Operating Hours |
|-------|--------------------------------------------|-----------------|------|-------------------|-----------------|------|-------------------|-----------------|
|       |                                            |                 |      |                   |                 |      |                   |                 |
| TOTAL | Total is the sum of each column separately |                 |      |                   |                 |      |                   |                 |

## Job

| Formation Name         | Top       | Bottom            | Called Out    | Date            | Time  | Time Zone |
|------------------------|-----------|-------------------|---------------|-----------------|-------|-----------|
| Formation Depth (MD)   |           |                   | On Location   | 12 - Feb - 2011 | 00:00 | MST       |
| Form Type              | BHST      | 232 degF          | On Location   | 13 - Feb - 2011 | 01:30 | MST       |
| Job depth MD           | 10003. ft | Job Depth TVD     | Job Started   | 13 - Feb - 2011 | 00:00 | MST       |
| Water Depth            |           | Wk Ht Above Floor | Job Completed | 13 - Feb - 2011 | 00:00 | MST       |
| Perforation Depth (MD) | From      | To                | Departed Loc  | 13 - Feb - 2011 | 00:00 | MST       |

## Well Data

| Description                   | New / Used | Max pressure psig | Size in | ID in | Weight lbm/ft | Thread | Grade | Top MD ft | Bottom MD ft | Top TVD ft | Bottom TVD ft |
|-------------------------------|------------|-------------------|---------|-------|---------------|--------|-------|-----------|--------------|------------|---------------|
| 9 7/8" Intermediate Open Hole |            |                   |         | 9.875 |               |        |       | 4862.     | 10007.       | 4580.      | 9677.         |
| 10 3/4" Surface Casing        | Unknown    |                   | 10.75   | 9.95  | 45.5          |        | J-55  | .         | 4862.        | .          | 4580.         |
| 7" Intermediate Casing        | Unknown    |                   | 7.      | 6.276 | 26.           |        | P-110 | .         | 10003.       | .          | 9673.         |

## Tools and Accessories

| Type         | Size | Qty | Make | Depth | Type        | Size | Qty | Make | Depth | Type           | Size | Qty | Make |
|--------------|------|-----|------|-------|-------------|------|-----|------|-------|----------------|------|-----|------|
| Guide Shoe   |      |     |      |       | Packer      |      |     |      |       | Top Plug       |      |     |      |
| Float Shoe   |      |     |      |       | Bridge Plug |      |     |      |       | Bottom Plug    |      |     |      |
| Float Collar |      |     |      |       | Retainer    |      |     |      |       | SSR plug set   |      |     |      |
| Insert Float |      |     |      |       |             |      |     |      |       | Plug Container |      |     |      |
| Stage Tool   |      |     |      |       |             |      |     |      |       | Centralizers   |      |     |      |

| Miscellaneous Materials                  |                        |                                  |         |                 |                                   |                 |                        |                           |                  |              |                        |        |
|------------------------------------------|------------------------|----------------------------------|---------|-----------------|-----------------------------------|-----------------|------------------------|---------------------------|------------------|--------------|------------------------|--------|
| Gelling Agt                              |                        | Conc                             |         | Surfactant      |                                   | Conc            |                        | Acid Type                 |                  | Qty          |                        | Conc % |
| Treatment Fld                            |                        | Conc                             |         | Inhibitor       |                                   | Conc            |                        | Sand Type                 |                  | Size         |                        | Qty    |
| Fluid Data                               |                        |                                  |         |                 |                                   |                 |                        |                           |                  |              |                        |        |
| Stage/Plug #: 1                          |                        |                                  |         |                 |                                   |                 |                        |                           |                  |              |                        |        |
| Fluid #                                  | Stage Type             | Fluid Name                       |         |                 | Qty                               | Qty uom         | Mixing Density lbm/gal | Yield ft <sup>3</sup> /sk | Mix Fluid Gal/sk | Rate bbl/min | Total Mix Fluid Gal/sk |        |
| 1                                        | TUNED SPACER III       | TUNED SPACER III - SBM (483826)  |         |                 | 80.00                             | bbl             | 10.                    | 5.48                      | 37.39            | 6.0          |                        |        |
|                                          | 38.32 gal/bbl          | FRESH WATER                      |         |                 |                                   |                 |                        |                           |                  |              |                        |        |
|                                          | 59.8 lbm/bbl           | BARITE, 100 LB SK (100003680)    |         |                 |                                   |                 |                        |                           |                  |              |                        |        |
| 2                                        | New Vernal Tuned Light | TUNED LIGHT (TM) SYSTEM (452984) |         |                 | 1405                              | sacks           | 11.                    | 2.21                      | 9.7              | 6.0          | 9.7                    |        |
|                                          | 0.2 lbm                | WG-17, 50 LB SK (100003623)      |         |                 |                                   |                 |                        |                           |                  |              |                        |        |
|                                          | 0.5 lbm                | D-AIR 3000 (101007446)           |         |                 |                                   |                 |                        |                           |                  |              |                        |        |
|                                          | 0.5 lbm                | HR-601, 50 LB BAG (101328348)    |         |                 |                                   |                 |                        |                           |                  |              |                        |        |
|                                          | 9.7 Gal                | FRESH WATER                      |         |                 |                                   |                 |                        |                           |                  |              |                        |        |
| 3                                        | Treated Water          |                                  |         |                 |                                   | bbl             | 8.4                    | .0                        | .0               | .0           |                        |        |
| Calculated Values                        |                        | Pressures                        |         |                 | Volumes                           |                 |                        |                           |                  |              |                        |        |
| Displacement                             |                        | Shut In: Instant                 |         |                 | Lost Returns                      |                 | Cement Slurry          |                           | Pad              |              |                        |        |
| Top Of Cement                            |                        | 5 Min                            |         |                 | Cement Returns                    |                 | Actual Displacement    |                           | Treatment        |              |                        |        |
| Frac Gradient                            |                        | 15 Min                           |         |                 | Spacers                           |                 | Load and Breakdown     |                           | Total Job        |              |                        |        |
| Rates                                    |                        |                                  |         |                 |                                   |                 |                        |                           |                  |              |                        |        |
| Circulating                              |                        | Mixing                           |         | Displacement    |                                   | Avg. Job        |                        |                           |                  |              |                        |        |
| Cement Left In Pipe                      |                        | Amount                           | 98.5 ft | Reason          | Shoe Joint                        |                 |                        |                           |                  |              |                        |        |
| Frac Ring # 1 @                          | ID                     | Frac ring # 2 @                  | ID      | Frac Ring # 3 @ | ID                                | Frac Ring # 4 @ | ID                     |                           |                  |              |                        |        |
| The Information Stated Herein Is Correct |                        |                                  |         |                 | Customer Representative Signature |                 |                        |                           |                  |              |                        |        |

# HALLIBURTON

## Lab Data

### Job Information

|                |                 |          |                     |            |             |
|----------------|-----------------|----------|---------------------|------------|-------------|
| Request/Slurry | 126556/3        | Rig Name | H&P 321             | Date       | 02/FEB/2011 |
| Submitted By   | Simukayi Mutasa | Job Type | Intermediate Casing | Bulk Plant | Vernal      |
| Customer       | ExxonMobil      | Location | Rio Blanco          | Well       | PCU 296-5A8 |

### Well Information

|                   |        |           |          |      |       |
|-------------------|--------|-----------|----------|------|-------|
| Casing/Liner Size | 7"     | Depth MD  | 10415 ft | BHST | 231 F |
| Hole Size         | 9 7/8" | Depth TVD | 10084 ft | BHCT | 173 F |

### Cement Information - Primary Design

| Conc   | UOM      | Cement/Additive          | Sample Type | Sample Date  | Lot No.        | Cement Properties |                     |        |
|--------|----------|--------------------------|-------------|--------------|----------------|-------------------|---------------------|--------|
|        |          | Tuned Light              |             |              |                | Slurry Density    | 11.00               | PPG    |
|        |          |                          |             |              |                | Slurry Yield      | 2.21                | ft3/sk |
| 36.88  | %        | > Boral Craig Pozmix     | Bulk        | Feb 07, 2011 |                | Water Requirement | 9.69                | GPS    |
| 11     | %        | > HGS 6000 (PB)          | Bulk        | Feb 07, 2011 |                | Water Source      | Field (Fresh) Water |        |
| 53.19  | %        | > Holcim Type V          | Bulk        | Feb 07, 2011 |                |                   |                     |        |
| 13     | %        | > Silicalite - Compacted | Bulk        | Feb 07, 2011 |                |                   |                     |        |
| 100.00 | % BWOC   | Cement Blend             |             |              |                |                   |                     |        |
| 0.500  | lb/sk    | HR-601                   | Bulk        | Feb 07, 2011 | 23HR07X-08S3JP |                   |                     |        |
| 0.500  | lb/sk    | D-Air 3000               | Bulk        | Feb 07, 2011 | 20103A1AG      |                   |                     |        |
| 0.200  | lb/sk    | FWCA                     | Bulk        | Feb 07, 2011 | 37967          |                   |                     |        |
| 9.69   | gal/sack | Field (Fresh) Water      | Lab         | Jan 13, 2011 | 1-13-2011      |                   |                     |        |

### Operation Test Results Request ID 126556/3

#### Thickening Time, Request Test ID:1292795

| Temp (°F) | Pressure (psi) | Batch Mix (min) | Reached in (min) | Start BC | 30 Bc (hh:mm) | 50 Bc (hh:mm) | 70 Bc (hh:mm) | 100 Bc (hh:mm) |
|-----------|----------------|-----------------|------------------|----------|---------------|---------------|---------------|----------------|
| 173       | 4,924          | 0               | 60               | 13       | 04:10         | 04:25         | 04:35         | 04:40          |

### Operation Test Results Request ID 126556/1

#### UCA Comp. Strength, Request Test ID:1285438

| End Temp (°F) | Pressure (psi) | 50 psi (hh:mm) | 500 psi (hh:mm) | 12 hr CS (psi) | 24 hr CS (psi) | 48 hr CS (psi) | End CS (psi) | End Time (hrs) |
|---------------|----------------|----------------|-----------------|----------------|----------------|----------------|--------------|----------------|
| 209           | 3,000          | 07:21          | 08:04           | 1,410          | 1,373          | 1,615          | 1,699        | 72             |

#### Free Water, Request Test ID:1285440

| Test Temp (°F) | % FW 45 Inc | Conditioning time |
|----------------|-------------|-------------------|
| 174            | 0           | 30                |

#### API Rheology, Request Test ID:1285439

| Temp (°F) | 600 | 300 | 200 | 100 | 60 | 30 | 6  | 3  | PV/YP       |
|-----------|-----|-----|-----|-----|----|----|----|----|-------------|
| 80        | 210 | 131 | 104 | 76  | 68 | 60 | 52 | 43 | 82.6 / 51.8 |

#### API Fluid Loss, Request Test ID:1285441

| Test Temp (°F) | Test Pressure (psi) | Test Time (min) | Meas. Vol (< 30 min, cc) | Extr. ISO FL (cc/30 min) | Conditioning time (min) |
|----------------|---------------------|-----------------|--------------------------|--------------------------|-------------------------|
| 174            | 1,000               | 1.25            | 20                       | 196                      | 30                      |

20 mL in 75 seconds.



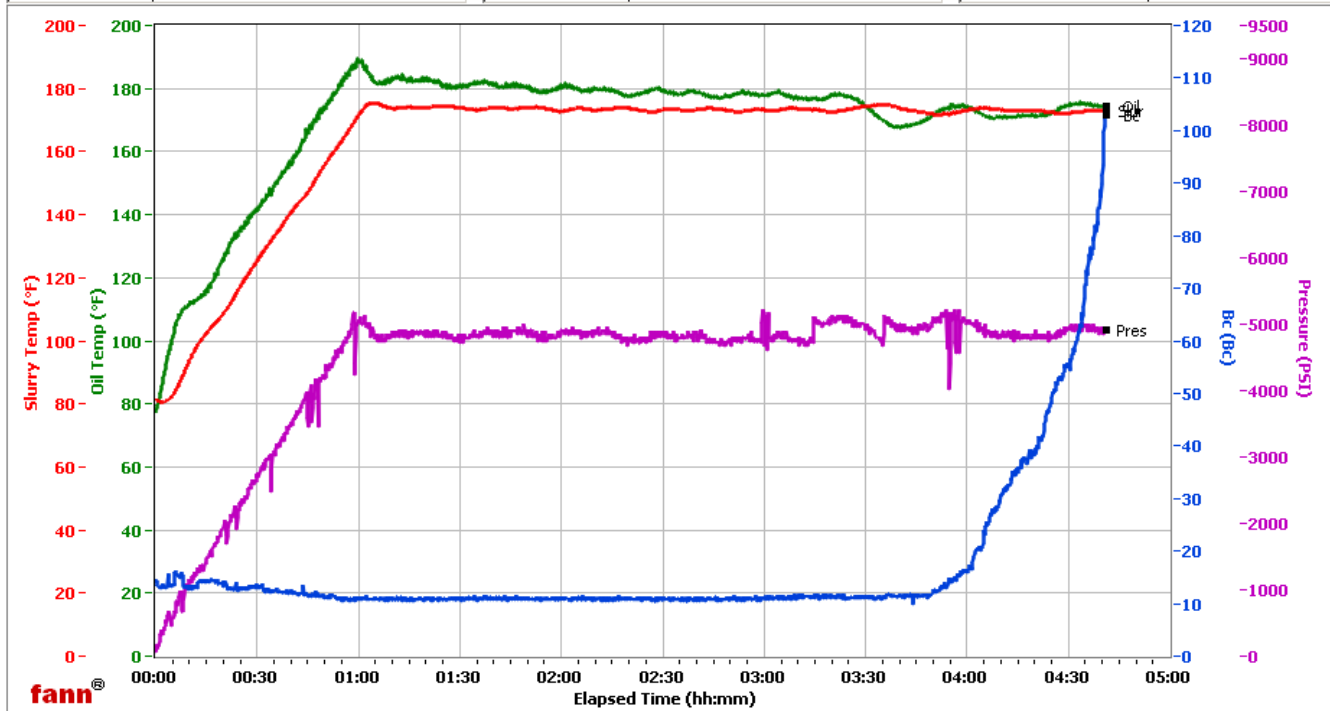
# HALLIBURTON

## Vernal

| Fields            | Values              |
|-------------------|---------------------|
| Project Name      | ExxonMobil 126556-3 |
| Test ID           | 126556-3            |
| Request ID        |                     |
| Tested by         | ADF                 |
| Customer          | ExxonMobil          |
| Well No           | PCU 296-5A8         |
| Rig               | 321                 |
| Casing/Liner Size | 7                   |

| Fields         | Values       |
|----------------|--------------|
| Job Type       | Inter Prim   |
| Cement Type    | V            |
| Cement Weight  | Light Weight |
| Test Date      | 02/07/11     |
| Test Time      | 04:59 PM     |
| Temp. Units    | degF         |
| Pressure Units | PSI          |

| Events    | Results |
|-----------|---------|
| 30.00 Bc  | 04h:10m |
| 50.00 Bc  | 04h:25m |
| 60.00 Bc  | 04h:32m |
| 70.00 Bc  | 04h:35m |
| 100.00 Bc | 04h:40m |
| 200.00 Bc | NaN     |
| 03h:00m   | 11.09   |
| 06h:00m   | NaN     |



Data File Z:\HPHT Data Files\Vernal Consistometer #4\ExxonMobil 126556-3a.tdms

Comments 11 D, 2.21 Y

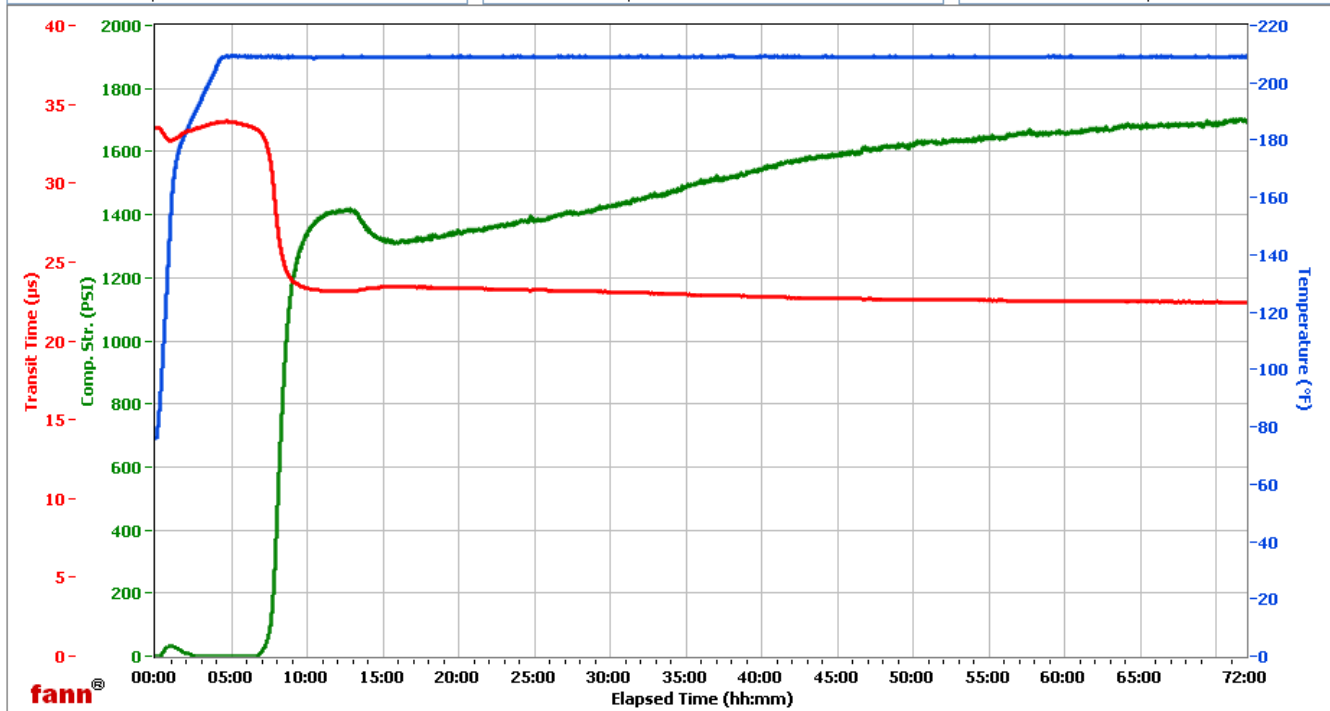
# HALLIBURTON

## Vernal

| Fields            | Values              |
|-------------------|---------------------|
| Project Name      | ExxonMobil 126556-1 |
| Test ID           | 126556-1            |
| Request ID        | UCA#12              |
| Tested by         | SMR                 |
| Customer          | ExxonMobil          |
| Well No           | PCU 296-5A8         |
| Rig               | H&P321              |
| Casing/Liner Size | 7                   |

| Fields         | Values               |
|----------------|----------------------|
| Job Type       | Intermediate Primary |
| Cement Type    | V                    |
| Cement Weight  | Light Weight         |
| Test Date      | 2/5/2011             |
| Test Time      | 9:01 AM              |
| Temp. Units    | degF                 |
| Pressure Units | PSI                  |

| Events      | Results |
|-------------|---------|
| 50.00 PSI   | 07h:21m |
| 100.00 PSI  | 07h:35m |
| 500.00 PSI  | 08h:04m |
| 1000.00 PSI | 08h:37m |
| 12h:00m     | 1410.49 |
| 24h:00m     | 1372.91 |
| 48h:00m     | 1614.63 |
| 72h:00m     | 1698.86 |

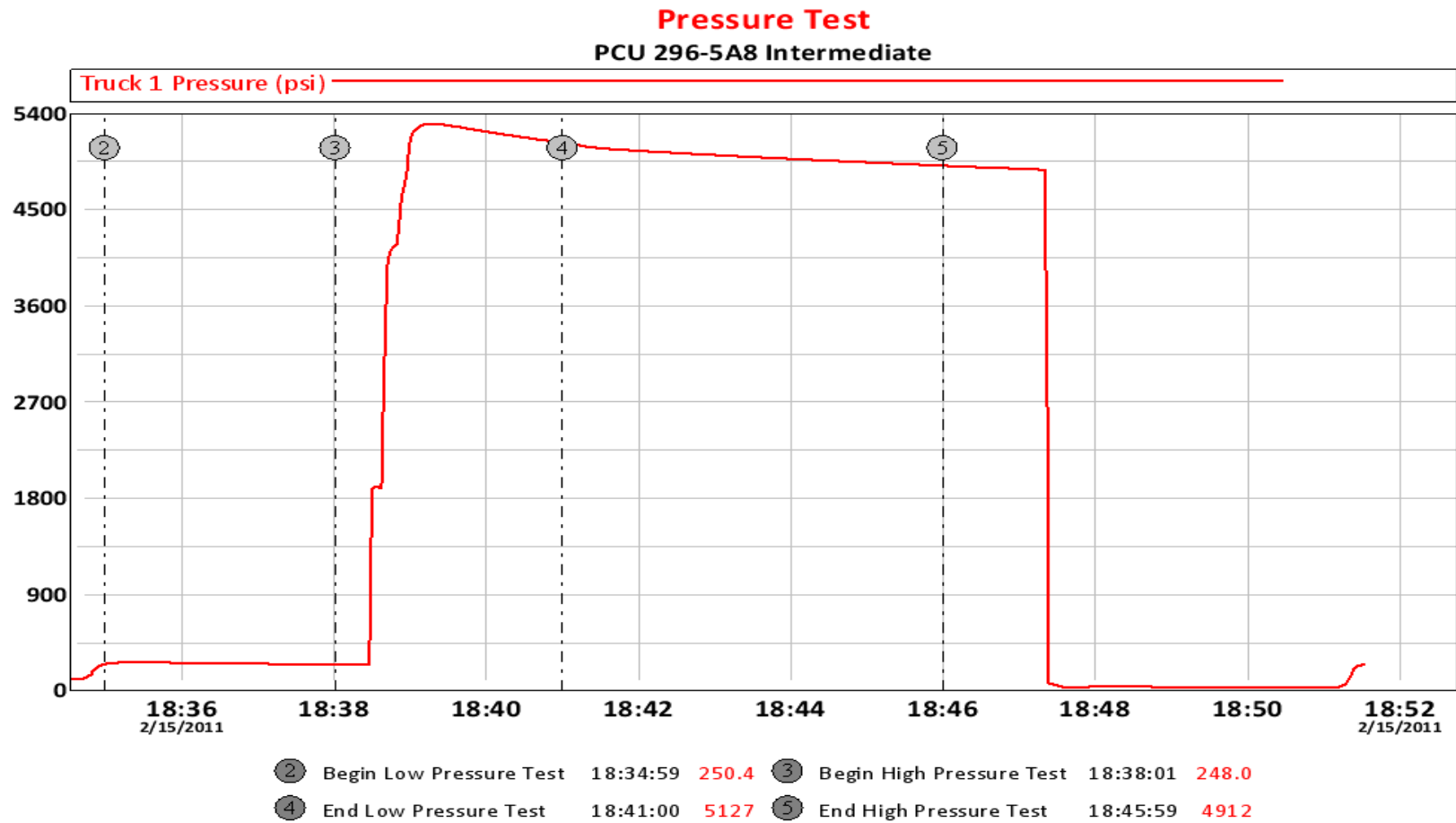


Data File C:\Documents and Settings\UCA\Desktop\TESTS\126556-1.tdms

Comments Tuned Light, 0.45 #/sk HR-601, 11.0 Density, 2.21 Yield

# HALLIBURTON

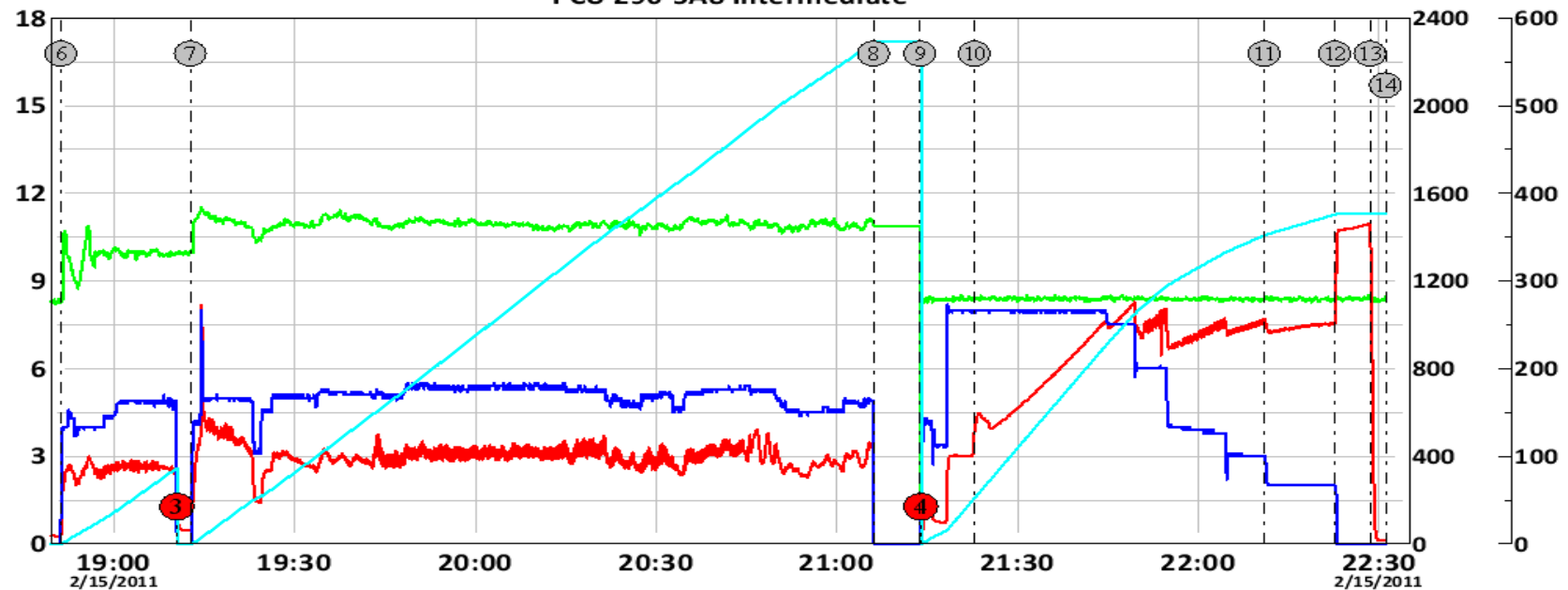
## Data Acquisition



|                   |                     |           |               |                |         |
|-------------------|---------------------|-----------|---------------|----------------|---------|
| Customer:         | EXXONMOBIL          | Job Date: | 15-Feb-2011   | Sales Order #: | 7951936 |
| Well Description: | PCU 296-5A8 296-5A8 | UWI:      | 051-031-12420 | Rig:           | 321     |

OptiCem v6.4.9  
15-Feb-11 18:51

## ExxonMobil Intermediate PCU 296-5A8 Intermediate



|                        |          |       |                              |          |       |
|------------------------|----------|-------|------------------------------|----------|-------|
| 6 Pump Tuned Spaced    | 18:51:16 | 60.42 | 7 Pump 1405 Sk VTL           | 19:12:43 | 65.00 |
| 8 Shut Down Wash Lines | 21:06:09 | 0.000 | 9 Treated Water Displacement | 21:13:48 | 21.00 |
| 10 Caught Pressure     | 21:22:53 | 523.0 | 11 Drop Rate to Bump Plug    | 22:10:59 | 1025  |
| 12 Bump Plug           | 22:22:41 | 1022  | 13 Check Floats              | 22:28:33 | 1400  |
| 14 Ending Job          | 22:31:06 | 16.00 |                              |          |       |

**Customer:** EXXONMOBIL  
**Well Description:** PCU 296-5A8 296-5A8

**Job Date:** 15-Feb-2011  
**UWI:** 05103112420000

**Sales Order #:** 7951936  
**Rig:**

OptiCem v6.4.9  
15-Feb-11 22:33