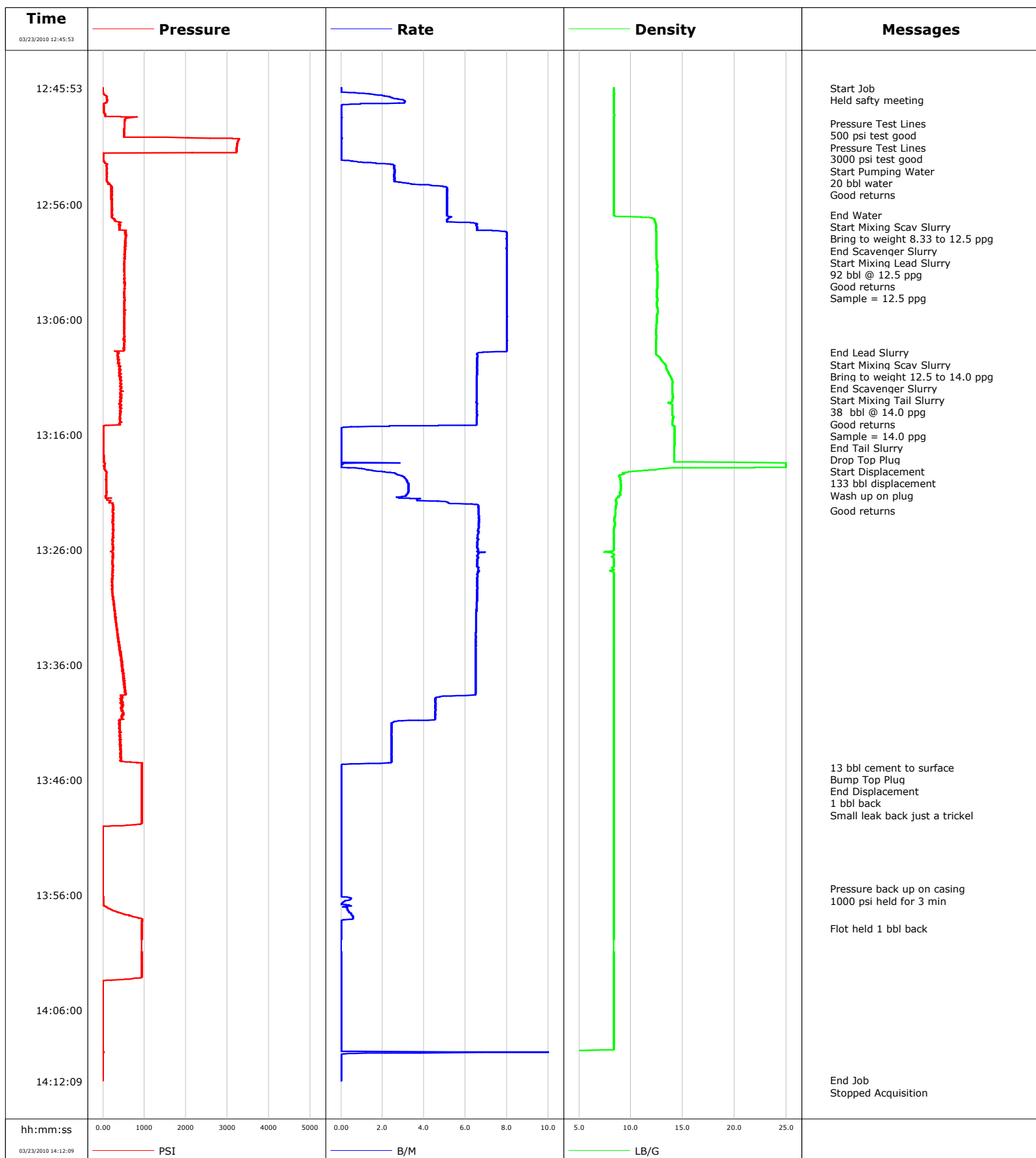


Well EF10C-28 C28 595
Field N Parachute
Engineer Terry Borg
Country United States

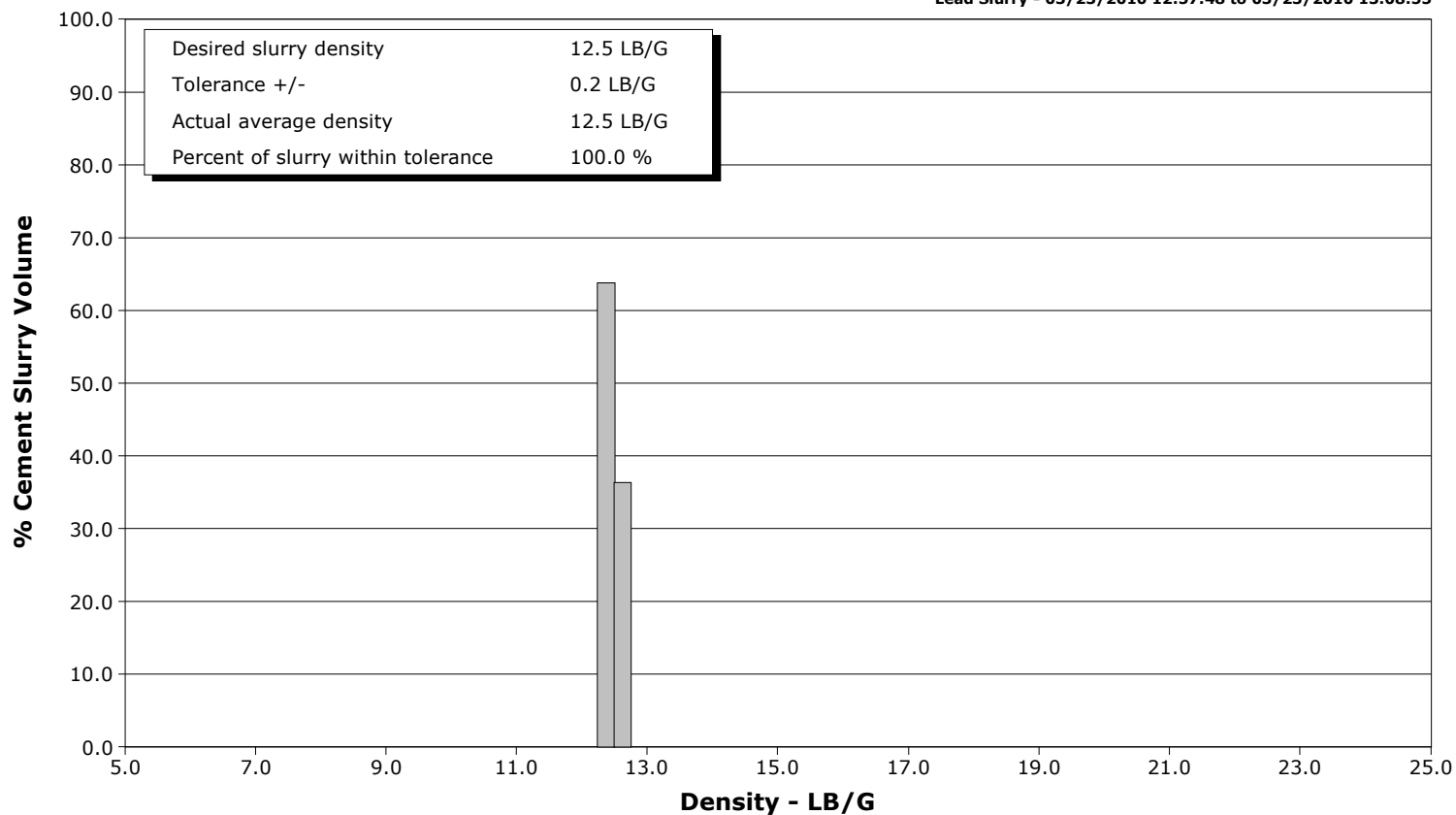
Client Encana
SIR No. B2K7-00029
Job Type 9 5/8 SURFACE
Job Date 03-23-2010



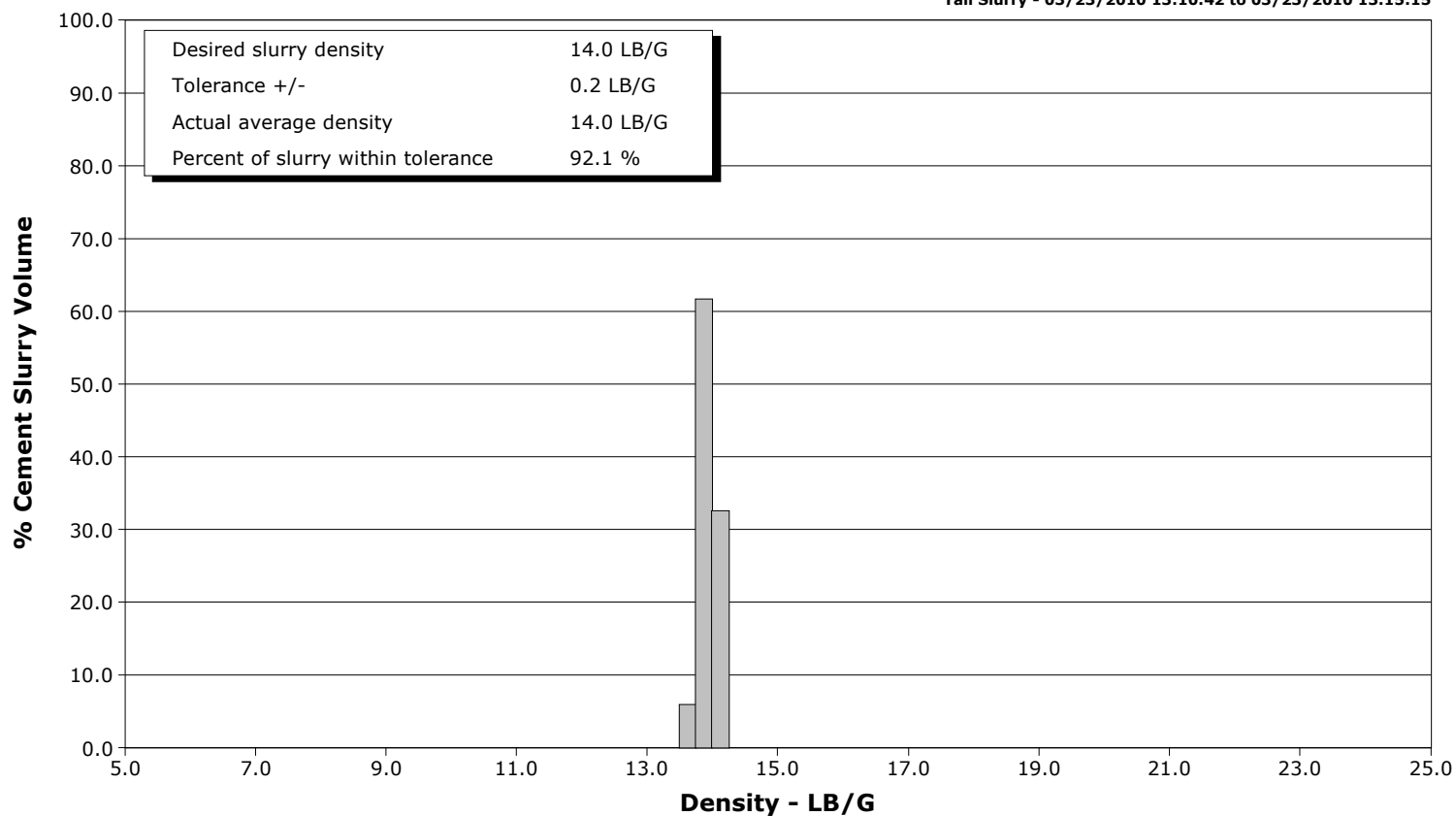
Well EF10C-28 C28 595
Field N Parachute
Engineer Terry Borg
Country United States

Client Encana
SIR No. B2K7-00029
Job Type 9 5/8 SURFACE
Job Date 03-23-2010

Lead Slurry - 03/23/2010 12:57:48 to 03/23/2010 13:08:55



Tail Slurry - 03/23/2010 13:10:42 to 03/23/2010 13:15:15





Cementing Service Report

				Customer Encana		Job Number B2K7-00029		
Well EF10C-28 C28 595 C 28 595			Location (legal) C 28		Schlumberger Location GCO		Job Start Mar/23/2010	
Field N Parachute		Formation Name/Type Shale		Deviation	Bit Size 12.3 in	Well MD 1752.0 ft		Well TVD 1752.0 ft
County Garfield		State/Province Colorado		BHP	BHST 87 degF	BHCT 100 degF	Pore Press. Gradient	
Well Master 0631163132		API/UWI						
Rig Name Nabors M-13	Drilled For Gas	Service Via Land	Casing/Liner					
			Depth, ft	Size, in	Weight, lb/ft	Grade	Thread	
Offshore Zone	Well Class New	Well Type Development	1752.0	9.630	36.0	K55	8RD	
			0.0	0.000	0.0			
Drilling Fluid Type Bentonite		Max. Density	Plastic Viscosity	Tubing/Drill Pipe				
				Depth,	Size,	Weight,	Grade	Thread
Service Line Cementing	Job Type 9 5/8 SURFACE							
Max. Allowed Tub. Press	Max. Allowed Ann. Press	WH Connection 9 5/8	Perforations/Open Hole					
			Top,	Bottom,		No. of Shots	Total Interval	
Service Instructions Cement 9 5/8 Surface Casing @ 1752ft 25% Annular Xs 20bbl Water 244 sks 12.5ppg G Lead 139 sks 14.0ppg G Tail Displace with water							Diameter	
			Treat Down Casing	Displacement 132.0 bbl	Packer Type	Packer Depth		
			Tubing Vol.	Casing Vol. 135.0 bbl	Annular Vol. 107.0 bbl	Openhole Vol. 252.0 bbl		
Casing/Tubing Secured <input checked="" type="checkbox"/>		1 Hole Vol. Circulated prior to Cement <input checked="" type="checkbox"/>		Casing Tools			Squeeze Job	
Lift Pressure			Shoe Type Other			Squeeze Type		
Pipe Rotated <input type="checkbox"/>		Pipe Reciprocated <input type="checkbox"/>		Shoe Depth 1752.0 ft			Tool Type	
No. Centralizers 22		Top Plugs 1	Bottom Plugs	Stage Tool Type			Tool Depth	
Cement Head Type Single			Stage Tool Depth			Tail Pipe Size		
Job Scheduled For Mar/23/2010 08:00		Arrived on Location Mar/23/2010 11:30	Leave Location Mar/23/2010 15:00	Collar Type Diff-Fill			Tail Pipe Depth	
				Collar Depth 1712.0 ft			Sqz. Total Vol.	
Date	Time 24-hr clock	Treating Pressure PSI	Flow Rate B/M	Density LB/G	Volume BBL	Message		
03/23/2010	12:06:55					Started Acquisition		
03/23/2010	12:45:53					Start Job		
03/23/2010	12:45:53	-4	0.0	8.36	0.0			
03/23/2010	12:45:54					Held safty meeting		
03/23/2010	12:45:54	-4	0.0	8.36	0.0			
03/23/2010	12:46:55	99	2.9	8.35	1.2			
03/23/2010	12:48:35	542	0.0	8.36	2.3			
03/23/2010	12:48:59					Pressure Test Lines		
03/23/2010	12:48:59	518	0.0	8.36	2.3			
03/23/2010	12:49:01					500 psi test good		
03/23/2010	12:49:01	518	0.0	8.36	2.3			
03/23/2010	12:50:15	2036	0.0	8.36	2.3			
03/23/2010	12:50:32					Pressure Test Lines		
03/23/2010	12:50:32	3255	0.0	8.36	2.3			
03/23/2010	12:50:34					3000 psi test good		
03/23/2010	12:50:34	3250	0.0	8.36	2.3			
03/23/2010	12:51:02					Start Pumping Water		
03/23/2010	12:51:02	3227	0.0	8.36	2.3			
03/23/2010	12:51:04					20 bbl water		
03/23/2010	12:51:04					Good returns		
03/23/2010	12:51:04	3226	0.0	8.36	2.3			

Well			Field		Job Start		Customer		Job Number	
EF10C-28 C28 595 C 28 595			N Parachute		Mar/23/2010		Encana		B2K7-00029	
Date	Time 24-hr clock	Treating Pressure PSI	Flow Rate B/M	Density LB/G	Volume BBL	Message				
03/23/2010	12:55:15	216	5.1	8.36	12.1					
03/23/2010	12:56:55	211	5.1	8.36	20.6					
03/23/2010	12:56:57					End Water				
03/23/2010	12:56:57	238	5.1	8.36	20.8					
03/23/2010	12:56:59					Start Mixing Scav Slurry				
03/23/2010	12:56:59	215	5.1	8.36	21.0					
03/23/2010	12:57:08					Bring to weight 8.33 to 12.5 ppg				
03/23/2010	12:57:08	203	5.3	11.02	21.7					
03/23/2010	12:57:47					End Scavenger Slurry				
03/23/2010	12:57:47	406	6.5	12.41	25.4					
03/23/2010	12:57:48					Start Mixing Lead Slurry				
03/23/2010	12:57:48	391	6.5	12.41	25.5					
03/23/2010	12:57:53					92 bbl @ 12.5 ppg				
03/23/2010	12:57:53	405	6.5	12.42	26.0					
03/23/2010	12:57:56					Good returns				
03/23/2010	12:57:56	403	6.5	12.43	26.3					
03/23/2010	12:58:01					Sample = 12.5 ppg				
03/23/2010	12:58:01	401	6.6	12.43	26.9					
03/23/2010	12:58:35	553	8.0	12.46	31.0					
03/23/2010	13:00:15	525	8.0	12.46	44.3					
03/23/2010	13:01:55	524	8.0	12.53	57.6					
03/23/2010	13:03:35	523	8.0	12.51	70.9					
03/23/2010	13:05:15	530	8.0	12.60	84.2					
03/23/2010	13:06:55	511	8.0	12.42	97.5					
03/23/2010	13:08:35	512	8.0	12.43	110.9					
03/23/2010	13:08:55					End Lead Slurry				
03/23/2010	13:08:55	347	6.7	12.42	113.4					
03/23/2010	13:08:59					Start Mixing Scav Slurry				
03/23/2010	13:08:59	360	6.6	12.43	113.9					
03/23/2010	13:09:01					Bring to weight 12.5 to 14.0 ppg				
03/23/2010	13:09:01	358	6.6	12.42	114.1					
03/23/2010	13:10:15	397	6.5	13.41	122.2					
03/23/2010	13:10:39					End Scavenger Slurry				
03/23/2010	13:10:39	427	6.5	13.62	124.8					
03/23/2010	13:10:42					Start Mixing Tail Slurry				
03/23/2010	13:10:42	392	6.5	13.65	125.1					
03/23/2010	13:10:59					38 bbl @ 14.0 ppg				
03/23/2010	13:10:59	410	6.5	13.82	127.0					
03/23/2010	13:11:01					Good returns				
03/23/2010	13:11:01	424	6.5	13.84	127.2					
03/23/2010	13:11:05					Sample = 14.0 ppg				
03/23/2010	13:11:05	442	6.5	13.88	127.6					
03/23/2010	13:11:55	423	6.5	13.99	133.1					
03/23/2010	13:13:35	426	6.5	14.00	144.0					
03/23/2010	13:15:15					End Tail Slurry				
03/23/2010	13:15:15	48	4.7	14.09	154.8					
03/23/2010	13:15:16					Drop Top Plug				
03/23/2010	13:15:16	10	3.5	14.16	154.9					
03/23/2010	13:15:17					Start Displacement				
03/23/2010	13:15:17	10	2.3	14.16	154.9					
03/23/2010	13:15:21					133 bbl displacement				
03/23/2010	13:15:21	12	0.5	14.22	155.0					
03/23/2010	13:15:25					Wash up on plug				
03/23/2010	13:15:25	11	0.1	14.23	155.0					

Well EF10C-28 C28 595 C 28 595			Field N Parachute		Job Start Mar/23/2010	Customer Encana		Job Number B2K7-00029
Date	Time 24-hr clock	Treating Pressure PSI		Flow Rate B/M	Density LB/G	Volume BBL		Message
03/23/2010	13:18:35	49		0.1	25.00	155.1		
03/23/2010	13:20:15	72		3.3	9.01	158.5		
03/23/2010	13:21:55	172		5.2	8.60	164.2		
03/23/2010	13:22:38							Good returns
03/23/2010	13:22:38	234		6.6	8.52	168.8		
03/23/2010	13:23:35	236		6.7	8.41	175.1		
03/23/2010	13:25:15	229		6.6	8.37	186.1		
03/23/2010	13:26:55	231		6.6	8.36	197.1		
03/23/2010	13:28:35	229		6.6	8.36	208.1		
03/23/2010	13:30:15	243		6.5	8.36	219.0		
03/23/2010	13:31:55	318		6.5	8.36	229.9		
03/23/2010	13:33:35	350		6.5	8.36	240.7		
03/23/2010	13:35:15	426		6.5	8.36	251.6		
03/23/2010	13:36:55	477		6.5	8.36	262.4		
03/23/2010	13:38:35	537		6.5	8.36	273.2		
03/23/2010	13:40:15	491		4.5	8.36	281.0		
03/23/2010	13:41:55	414		2.4	8.36	286.4		
03/23/2010	13:43:35	425		2.4	8.36	290.4		
03/23/2010	13:44:54							13 bbl cement to surface
03/23/2010	13:44:54	935		0.0	8.36	292.9		
03/23/2010	13:44:59							Bump Top Plug
03/23/2010	13:44:59	935		0.0	8.36	292.9		
03/23/2010	13:45:00							End Displacement
03/23/2010	13:45:00	935		0.0	8.36	292.9		
03/23/2010	13:45:05							1 bbl back
03/23/2010	13:45:05	936		0.0	8.36	292.9		
03/23/2010	13:45:15	935		0.0	8.36	292.9		
03/23/2010	13:46:00							Small leak back just a trickel
03/23/2010	13:46:00	933		0.0	8.36	292.9		
03/23/2010	13:46:55	933		0.0	8.36	292.9		
03/23/2010	13:48:35	933		0.0	8.36	292.9		
03/23/2010	13:50:15	-2		0.0	8.36	292.9		
03/23/2010	13:51:55	-1		0.0	8.36	292.9		
03/23/2010	13:53:35	-1		0.0	8.36	292.9		
03/23/2010	13:55:15	-1		0.0	8.36	292.9		
03/23/2010	13:55:28							Pressure back up on casing
03/23/2010	13:55:28	-1		0.0	8.36	292.9		
03/23/2010	13:56:04							1000 psi held for 3 min
03/23/2010	13:56:04	-1		0.0	8.36	292.9		
03/23/2010	13:56:55	23		0.3	8.36	293.1		
03/23/2010	13:58:35	939		0.0	8.36	293.6		
03/23/2010	13:58:54							Flot held 1 bbl back
03/23/2010	13:58:54	938		0.0	8.36	293.6		
03/23/2010	14:01:55	931		0.0	8.36	293.6		
03/23/2010	14:03:35	-2		0.0	8.36	293.6		
03/23/2010	14:05:15	-1		0.0	8.36	293.6		
03/23/2010	14:06:55	-1		0.0	8.36	293.6		
03/23/2010	14:08:35	-1		0.0	8.36	293.6		
03/23/2010	14:10:15	-4		0.0	0.00	294.4		
03/23/2010	14:11:55	-4		0.0	0.00	294.4		
03/23/2010	14:12:04							End Job
03/23/2010	14:12:04	-4		0.0	0.00	294.4		

Well EF10C-28 C28 595 C 28 595	Field N Parachute	Job Start Mar/23/2010	Customer Encana	Job Number B2K7-00029
--	-----------------------------	---------------------------------	---------------------------	---------------------------------

Post Job Summary

Average Pump Rates, bbl/min					Volume of Fluid Injected, bbl			
Slurry 5.5	N2	Mud 0.0	Maximum Rate 10.1	Total Slurry 130.0	Mud 0.0	Spacer 20.0	N2	
Treating Pressure Summary, psi					Breakdown Fluid			
Maximum 3286	Final 1000	Average 460	Bump Plug to	Breakdown	Type	Volume	Density	
Avg. N2 Percent	Designed Slurry Volume 130.0 bbl		Displacement 133.0 bbl	Mix Water Temp 60 degF	Cement Circulated to Surface? <input checked="" type="checkbox"/>	Volume 13.0 bbl		
Customer or Authorized Representative Floyd Roberts			Schlumberger Supervisor Terry Borg		Washed Thru Perfs <input type="checkbox"/>	To		
					Circulation Lost <input type="checkbox"/>	Job Completed <input checked="" type="checkbox"/>		
					-		-	