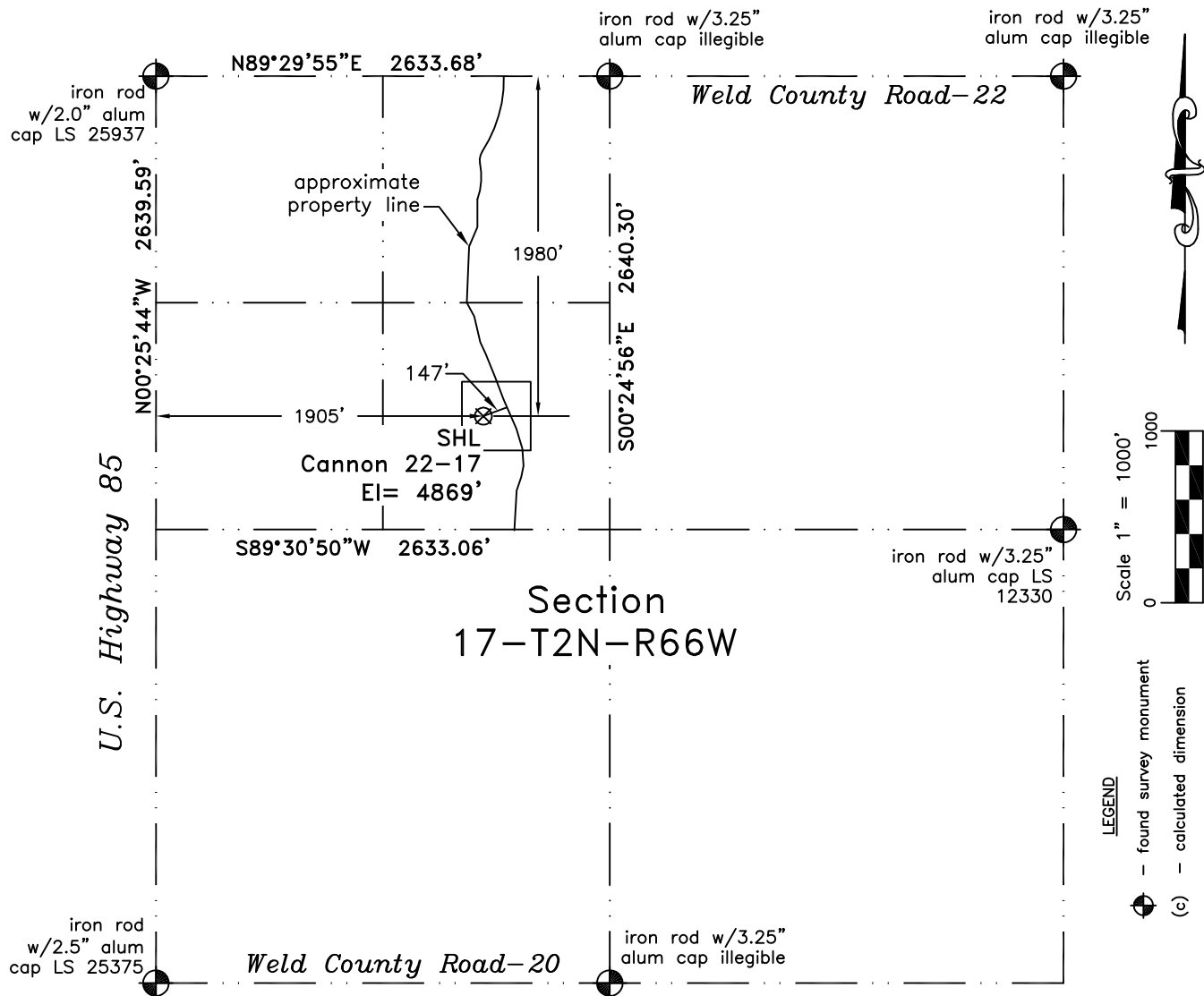


PLS Group, LLC
109 Coronado Ct. - Bldg. 7
Fort Collins, Colorado 80525

WELL LOCATION CERTIFICATE

*THIS MAP DOES NOT
REPRESENT A BOUNDARY SURVEY*



In accordance with a request from Dan Nelson of EnCana Oil & Gas (USA) Inc., PLS Group, LLC has determined the location of the **Cannon 22-17** well site to be SHL: 1980' FNL and 1905' FWL, as measured at ninety (90) degrees from the section lines of Section 17, Township 2 North, Range 66 West, 6th Principal Meridian, Town of Erie, County of Weld, CO.

Proposed Surface Hole Data:

Latitude: N 40.13992°

Longitude: W 104.80375°

PDOP: 1.5

Nearest: Building 1165' northeast

Above Ground Utility 178' northeast

Public Road 1905' west

Railroad 1430' southwest

Property Line 147' northeast

Well Window: SHL is 130' inside

Existing Well: HSR Cannon Federal #5-17A 1105' southwest

Notes:

- 1) Bearings and distances based on NAD 83 Colorado North State Plane Coordinates using RTK GPS observations taken 11/03/10 by operator Craig Burke.
- 2) Conversion factor to ground (1.0002718253).
- 3) Elevations based on NAVD 88 GPS heights and Geoid 2003 corrections.
- 4) See improvement map for visible improvements within 400' of pad site.
- 5) The surface use is agricultural field.

NOTICE: According to Colorado law you MUST commence any legal action based upon any defect in this W.L.C. within three years after you first discover such defect. In no event may any action based upon any defect in this W.L.C. be commenced more than ten years from this said date of the certification shown hereon.

I hereby certify that this Well Location Certificate was prepared by me or under my direct supervision on 3/7/2011 for and on behalf of EnCana Oil & Gas (USA) Inc. That it is not a Land Survey Plat or an Improvement Survey Plat and that it is not to be relied upon for establishment of fences, buildings, or other future improvement lines.

John Robert McGehee LS#38219
Well: Cannon 22-17 WLC