

Well Name: SRC Pratt 32-29D

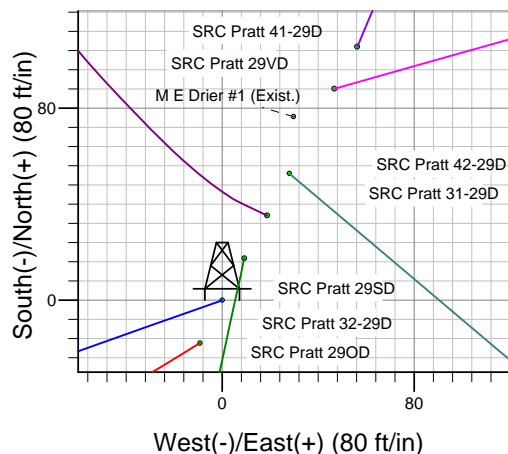
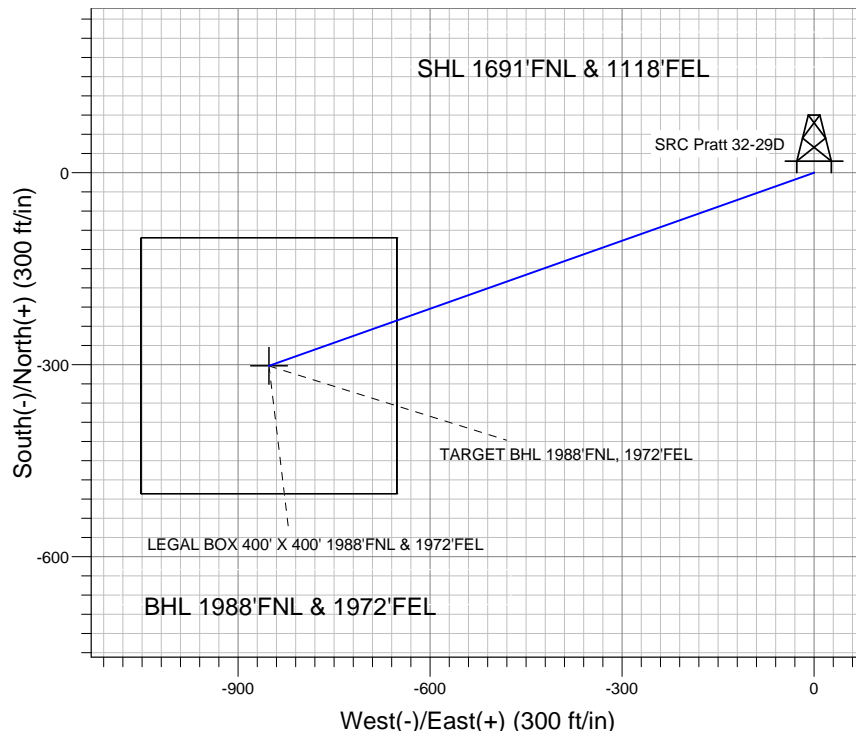
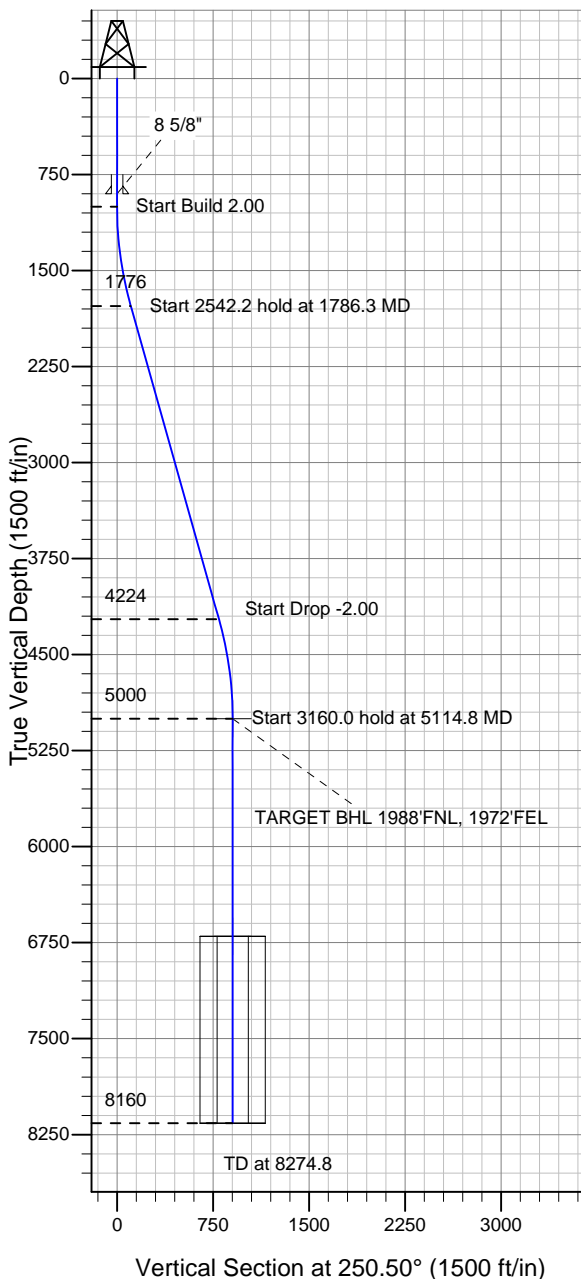
Surface Location: SRC Pratt 41-29D Pad Sec.29-T1N-R68W
North American Datum 1983 , US State Plane 1983 , Colorado Northern Zone

Ground Elevation: 5209.0

+N/-S	+E/-W	Northing	Easting	Latitude	Longitude	Slot
0.0	0.0	1252193.92	3133801.04	40.024670	-105.022226	

Original Well Elev WELL @ 5222.0ft (Original Well Elev)

Synergy Resources



SRC Pratt 41-29D Pad Sec.29-T1N-R68W
SRC Pratt 32-29D
Plan #1 (3-01-11)
16:32, March 01 2011



Azimuths to True North
Magnetic North: 9.01°

Magnetic Field
Strength: 52932.6snT
Dip Angle: 66.71°
Date: 3/1/2011
Model: IGRF2010

WELLBORE TARGET DETAILS (LAT/LONG)

Name	TVD	+N/-S	+E/-W	Latitude	Longitude	Shape
TARGET BHL 1988'FNL, 1972'FEL	5000.0	-301.6	-851.7	40.023842	-105.025267	Point
LEGAL BOX 400' X 400' 1988'FNL & 1972'FEL	6700.0	-301.6	-851.7	40.023842	-105.025267	Rectangle (Sides: L400.0 W400.0)

SECTION DETAILS

Sec	MD	Inc	Azi	TVD	+N/-S	+E/-W	DLeg	TFace	VSec	Target
1	0.0	0.00	0.00	0.0	0.0	0.0	0.00	0.00	0.0	
2	1000.0	0.00	0.00	1000.0	0.0	0.0	0.00	0.00	0.0	
3	1786.3	15.73	250.50	1776.5	-35.8	-101.1	2.00	250.50	107.2	
4	4328.5	15.73	250.50	4223.5	-265.8	-750.6	0.00	0.00	796.3	
5	5114.8	0.00	0.00	5000.0	-301.6	-851.7	2.00	180.00	903.5	TARGET BHL 1988'FNL, 1972'FEL
6	8274.8	0.00	0.00	8160.0	-301.6	-851.7	0.00	0.00	903.5	



Synergy Resources

SEC.29-T1N-R68W

SRC Pratt 41-29D Pad Sec.29-T1N-R68W

SRC Pratt 32-29D

Wellbore #1

Plan: Plan #1 (3-01-11)

Standard Planning Report

01 March, 2011

Plan Sections										
Measured Depth (ft)	Inclination (°)	Azimuth (°)	Vertical Depth (ft)	+N/-S (ft)	+E/-W (ft)	Dogleg Rate (°/100ft)	Build Rate (°/100ft)	Turn Rate (°/100ft)	TFO (°)	Target
0.0	0.00	0.00	0.0	0.0	0.0	0.00	0.00	0.00	0.00	
1,000.0	0.00	0.00	1,000.0	0.0	0.0	0.00	0.00	0.00	0.00	
1,786.3	15.73	250.50	1,776.5	-35.8	-101.1	2.00	2.00	0.00	250.50	
4,328.5	15.73	250.50	4,223.5	-265.8	-750.6	0.00	0.00	0.00	0.00	
5,114.8	0.00	0.00	5,000.0	-301.6	-851.7	2.00	-2.00	0.00	180.00	TARGET BHL 1988
8,274.8	0.00	0.00	8,160.0	-301.6	-851.7	0.00	0.00	0.00	0.00	

Database:	Landmark	Local Co-ordinate Reference:	Well SRC Pratt 32-29D
Company:	Synergy Resources	TVD Reference:	WELL @ 5222.0ft (Original Well Elev)
Project:	SEC.29-T1N-R68W	MD Reference:	WELL @ 5222.0ft (Original Well Elev)
Site:	SRC Pratt 41-29D Pad Sec.29-T1N-R68W	North Reference:	True
Well:	SRC Pratt 32-29D	Survey Calculation Method:	Minimum Curvature
Wellbore:	Wellbore #1		
Design:	Plan #1 (3-01-11)		

Planned Survey									
Measured Depth (ft)	Inclination (°)	Azimuth (°)	Vertical Depth (ft)	+N/-S (ft)	+E/-W (ft)	Vertical Section (ft)	Dogleg Rate (°/100ft)	Build Rate (°/100ft)	Turn Rate (°/100ft)
0.0	0.00	0.00	0.0	0.0	0.0	0.0	0.00	0.00	0.00
40.0	0.00	0.00	40.0	0.0	0.0	0.0	0.00	0.00	0.00
80.0	0.00	0.00	80.0	0.0	0.0	0.0	0.00	0.00	0.00
120.0	0.00	0.00	120.0	0.0	0.0	0.0	0.00	0.00	0.00
160.0	0.00	0.00	160.0	0.0	0.0	0.0	0.00	0.00	0.00
200.0	0.00	0.00	200.0	0.0	0.0	0.0	0.00	0.00	0.00
240.0	0.00	0.00	240.0	0.0	0.0	0.0	0.00	0.00	0.00
280.0	0.00	0.00	280.0	0.0	0.0	0.0	0.00	0.00	0.00
320.0	0.00	0.00	320.0	0.0	0.0	0.0	0.00	0.00	0.00
360.0	0.00	0.00	360.0	0.0	0.0	0.0	0.00	0.00	0.00
400.0	0.00	0.00	400.0	0.0	0.0	0.0	0.00	0.00	0.00
440.0	0.00	0.00	440.0	0.0	0.0	0.0	0.00	0.00	0.00
480.0	0.00	0.00	480.0	0.0	0.0	0.0	0.00	0.00	0.00
520.0	0.00	0.00	520.0	0.0	0.0	0.0	0.00	0.00	0.00
560.0	0.00	0.00	560.0	0.0	0.0	0.0	0.00	0.00	0.00
600.0	0.00	0.00	600.0	0.0	0.0	0.0	0.00	0.00	0.00
640.0	0.00	0.00	640.0	0.0	0.0	0.0	0.00	0.00	0.00
680.0	0.00	0.00	680.0	0.0	0.0	0.0	0.00	0.00	0.00
720.0	0.00	0.00	720.0	0.0	0.0	0.0	0.00	0.00	0.00
760.0	0.00	0.00	760.0	0.0	0.0	0.0	0.00	0.00	0.00
800.0	0.00	0.00	800.0	0.0	0.0	0.0	0.00	0.00	0.00
840.0	0.00	0.00	840.0	0.0	0.0	0.0	0.00	0.00	0.00
880.0	0.00	0.00	880.0	0.0	0.0	0.0	0.00	0.00	0.00
900.0	0.00	0.00	900.0	0.0	0.0	0.0	0.00	0.00	0.00
8 5/8"									
920.0	0.00	0.00	920.0	0.0	0.0	0.0	0.00	0.00	0.00
960.0	0.00	0.00	960.0	0.0	0.0	0.0	0.00	0.00	0.00
1,000.0	0.00	0.00	1,000.0	0.0	0.0	0.0	0.00	0.00	0.00
1,040.0	0.80	250.50	1,040.0	-0.1	-0.3	0.3	2.00	2.00	0.00
1,080.0	1.60	250.50	1,080.0	-0.4	-1.1	1.1	2.00	2.00	0.00
1,120.0	2.40	250.50	1,120.0	-0.8	-2.4	2.5	2.00	2.00	0.00
1,160.0	3.20	250.50	1,159.9	-1.5	-4.2	4.5	2.00	2.00	0.00
1,200.0	4.00	250.50	1,199.8	-2.3	-6.6	7.0	2.00	2.00	0.00
1,240.0	4.80	250.50	1,239.7	-3.4	-9.5	10.0	2.00	2.00	0.00
1,280.0	5.60	250.50	1,279.6	-4.6	-12.9	13.7	2.00	2.00	0.00
1,320.0	6.40	250.50	1,319.3	-6.0	-16.8	17.9	2.00	2.00	0.00
1,360.0	7.20	250.50	1,359.1	-7.5	-21.3	22.6	2.00	2.00	0.00
1,400.0	8.00	250.50	1,398.7	-9.3	-26.3	27.9	2.00	2.00	0.00
1,440.0	8.80	250.50	1,438.3	-11.3	-31.8	33.7	2.00	2.00	0.00
1,480.0	9.60	250.50	1,477.8	-13.4	-37.8	40.1	2.00	2.00	0.00
1,520.0	10.40	250.50	1,517.1	-15.7	-44.4	47.1	2.00	2.00	0.00
1,560.0	11.20	250.50	1,556.4	-18.2	-51.4	54.6	2.00	2.00	0.00
1,600.0	12.00	250.50	1,595.6	-20.9	-59.0	62.6	2.00	2.00	0.00
1,640.0	12.80	250.50	1,634.7	-23.8	-67.1	71.2	2.00	2.00	0.00
1,680.0	13.60	250.50	1,673.6	-26.8	-75.7	80.3	2.00	2.00	0.00
1,720.0	14.40	250.50	1,712.4	-30.0	-84.8	90.0	2.00	2.00	0.00
1,760.0	15.20	250.50	1,751.1	-33.5	-94.5	100.2	2.00	2.00	0.00
1,786.3	15.73	250.50	1,776.5	-35.8	-101.1	107.2	2.00	2.00	0.00
1,800.0	15.73	250.50	1,789.7	-37.0	-104.6	110.9	0.00	0.00	0.00
1,840.0	15.73	250.50	1,828.2	-40.7	-114.8	121.8	0.00	0.00	0.00
1,880.0	15.73	250.50	1,866.7	-44.3	-125.0	132.6	0.00	0.00	0.00
1,920.0	15.73	250.50	1,905.2	-47.9	-135.2	143.5	0.00	0.00	0.00
1,960.0	15.73	250.50	1,943.7	-51.5	-145.5	154.3	0.00	0.00	0.00
2,000.0	15.73	250.50	1,982.2	-55.1	-155.7	165.2	0.00	0.00	0.00

Database:	Landmark	Local Co-ordinate Reference:	Well SRC Pratt 32-29D
Company:	Synergy Resources	TVD Reference:	WELL @ 5222.0ft (Original Well Elev)
Project:	SEC.29-T1N-R68W	MD Reference:	WELL @ 5222.0ft (Original Well Elev)
Site:	SRC Pratt 41-29D Pad Sec.29-T1N-R68W	North Reference:	True
Well:	SRC Pratt 32-29D	Survey Calculation Method:	Minimum Curvature
Wellbore:	Wellbore #1		
Design:	Plan #1 (3-01-11)		

Planned Survey									
Measured Depth (ft)	Inclination (°)	Azimuth (°)	Vertical Depth (ft)	+N/-S (ft)	+E/-W (ft)	Vertical Section (ft)	Dogleg Rate (°/100ft)	Build Rate (°/100ft)	Turn Rate (°/100ft)
2,040.0	15.73	250.50	2,020.7	-58.7	-165.9	176.0	0.00	0.00	0.00
2,080.0	15.73	250.50	2,059.2	-62.4	-176.1	186.8	0.00	0.00	0.00
2,120.0	15.73	250.50	2,097.7	-66.0	-186.3	197.7	0.00	0.00	0.00
2,160.0	15.73	250.50	2,136.2	-69.6	-196.6	208.5	0.00	0.00	0.00
2,200.0	15.73	250.50	2,174.7	-73.2	-206.8	219.4	0.00	0.00	0.00
2,240.0	15.73	250.50	2,213.2	-76.8	-217.0	230.2	0.00	0.00	0.00
2,280.0	15.73	250.50	2,251.7	-80.5	-227.2	241.0	0.00	0.00	0.00
2,320.0	15.73	250.50	2,290.2	-84.1	-237.4	251.9	0.00	0.00	0.00
2,360.0	15.73	250.50	2,328.7	-87.7	-247.7	262.7	0.00	0.00	0.00
2,400.0	15.73	250.50	2,367.2	-91.3	-257.9	273.6	0.00	0.00	0.00
2,440.0	15.73	250.50	2,405.7	-94.9	-268.1	284.4	0.00	0.00	0.00
2,480.0	15.73	250.50	2,444.2	-98.6	-278.3	295.3	0.00	0.00	0.00
2,520.0	15.73	250.50	2,482.7	-102.2	-288.5	306.1	0.00	0.00	0.00
2,560.0	15.73	250.50	2,521.2	-105.8	-298.8	316.9	0.00	0.00	0.00
2,600.0	15.73	250.50	2,559.7	-109.4	-309.0	327.8	0.00	0.00	0.00
2,640.0	15.73	250.50	2,598.2	-113.0	-319.2	338.6	0.00	0.00	0.00
2,680.0	15.73	250.50	2,636.7	-116.7	-329.4	349.5	0.00	0.00	0.00
2,720.0	15.73	250.50	2,675.2	-120.3	-339.6	360.3	0.00	0.00	0.00
2,760.0	15.73	250.50	2,713.7	-123.9	-349.9	371.1	0.00	0.00	0.00
2,800.0	15.73	250.50	2,752.2	-127.5	-360.1	382.0	0.00	0.00	0.00
2,840.0	15.73	250.50	2,790.7	-131.1	-370.3	392.8	0.00	0.00	0.00
2,880.0	15.73	250.50	2,829.2	-134.7	-380.5	403.7	0.00	0.00	0.00
2,920.0	15.73	250.50	2,867.7	-138.4	-390.7	414.5	0.00	0.00	0.00
2,960.0	15.73	250.50	2,906.2	-142.0	-401.0	425.4	0.00	0.00	0.00
3,000.0	15.73	250.50	2,944.7	-145.6	-411.2	436.2	0.00	0.00	0.00
3,040.0	15.73	250.50	2,983.2	-149.2	-421.4	447.0	0.00	0.00	0.00
3,080.0	15.73	250.50	3,021.7	-152.8	-431.6	457.9	0.00	0.00	0.00
3,120.0	15.73	250.50	3,060.2	-156.5	-441.8	468.7	0.00	0.00	0.00
3,160.0	15.73	250.50	3,098.7	-160.1	-452.1	479.6	0.00	0.00	0.00
3,200.0	15.73	250.50	3,137.2	-163.7	-462.3	490.4	0.00	0.00	0.00
3,240.0	15.73	250.50	3,175.8	-167.3	-472.5	501.2	0.00	0.00	0.00
3,280.0	15.73	250.50	3,214.3	-170.9	-482.7	512.1	0.00	0.00	0.00
3,320.0	15.73	250.50	3,252.8	-174.6	-492.9	522.9	0.00	0.00	0.00
3,360.0	15.73	250.50	3,291.3	-178.2	-503.1	533.8	0.00	0.00	0.00
3,400.0	15.73	250.50	3,329.8	-181.8	-513.4	544.6	0.00	0.00	0.00
3,440.0	15.73	250.50	3,368.3	-185.4	-523.6	555.4	0.00	0.00	0.00
3,480.0	15.73	250.50	3,406.8	-189.0	-533.8	566.3	0.00	0.00	0.00
3,520.0	15.73	250.50	3,445.3	-192.7	-544.0	577.1	0.00	0.00	0.00
3,560.0	15.73	250.50	3,483.8	-196.3	-554.2	588.0	0.00	0.00	0.00
3,600.0	15.73	250.50	3,522.3	-199.9	-564.5	598.8	0.00	0.00	0.00
3,640.0	15.73	250.50	3,560.8	-203.5	-574.7	609.7	0.00	0.00	0.00
3,680.0	15.73	250.50	3,599.3	-207.1	-584.9	620.5	0.00	0.00	0.00
3,720.0	15.73	250.50	3,637.8	-210.8	-595.1	631.3	0.00	0.00	0.00
3,760.0	15.73	250.50	3,676.3	-214.4	-605.3	642.2	0.00	0.00	0.00
3,800.0	15.73	250.50	3,714.8	-218.0	-615.6	653.0	0.00	0.00	0.00
3,840.0	15.73	250.50	3,753.3	-221.6	-625.8	663.9	0.00	0.00	0.00
3,880.0	15.73	250.50	3,791.8	-225.2	-636.0	674.7	0.00	0.00	0.00
3,920.0	15.73	250.50	3,830.3	-228.8	-646.2	685.5	0.00	0.00	0.00
3,960.0	15.73	250.50	3,868.8	-232.5	-656.4	696.4	0.00	0.00	0.00
4,000.0	15.73	250.50	3,907.3	-236.1	-666.7	707.2	0.00	0.00	0.00
4,040.0	15.73	250.50	3,945.8	-239.7	-676.9	718.1	0.00	0.00	0.00
4,080.0	15.73	250.50	3,984.3	-243.3	-687.1	728.9	0.00	0.00	0.00
4,120.0	15.73	250.50	4,022.8	-246.9	-697.3	739.8	0.00	0.00	0.00
4,160.0	15.73	250.50	4,061.3	-250.6	-707.5	750.6	0.00	0.00	0.00

Planned Survey		Survey Data								
Measured Depth (ft)	Inclination (°)	Azimuth (°)	Vertical Depth (ft)	+N-S (ft)	+E-W (ft)	Vertical Section (ft)	Dogleg Rate (°/100ft)	Build Rate (°/100ft)	Turn Rate (°/100ft)	
4,200.0	15.73	250.50	4,099.8	-254.2	-717.8	761.4	0.00	0.00	0.00	
4,240.0	15.73	250.50	4,138.3	-257.8	-728.0	772.3	0.00	0.00	0.00	
4,280.0	15.73	250.50	4,176.8	-261.4	-738.2	783.1	0.00	0.00	0.00	
4,320.0	15.73	250.50	4,215.3	-265.0	-748.4	794.0	0.00	0.00	0.00	
4,328.5	15.73	250.50	4,223.5	-265.8	-750.6	796.3	0.00	0.00	0.00	
4,360.0	15.10	250.50	4,253.9	-268.6	-758.5	804.6	2.00	-2.00	0.00	
4,400.0	14.30	250.50	4,292.6	-272.0	-768.0	814.8	2.00	-2.00	0.00	
4,440.0	13.50	250.50	4,331.4	-275.2	-777.1	824.4	2.00	-2.00	0.00	
4,480.0	12.70	250.50	4,370.4	-278.2	-785.6	833.5	2.00	-2.00	0.00	
4,520.0	11.90	250.50	4,409.4	-281.1	-793.7	842.0	2.00	-2.00	0.00	
4,560.0	11.10	250.50	4,448.6	-283.7	-801.2	849.9	2.00	-2.00	0.00	
4,600.0	10.30	250.50	4,487.9	-286.2	-808.2	857.4	2.00	-2.00	0.00	
4,640.0	9.50	250.50	4,527.3	-288.5	-814.7	864.2	2.00	-2.00	0.00	
4,680.0	8.70	250.50	4,566.8	-290.6	-820.6	870.6	2.00	-2.00	0.00	
4,720.0	7.90	250.50	4,606.4	-292.5	-826.1	876.3	2.00	-2.00	0.00	
4,760.0	7.10	250.50	4,646.1	-294.3	-831.0	881.6	2.00	-2.00	0.00	
4,800.0	6.30	250.50	4,685.8	-295.8	-835.4	886.2	2.00	-2.00	0.00	
4,840.0	5.50	250.50	4,725.6	-297.2	-839.3	890.3	2.00	-2.00	0.00	
4,880.0	4.70	250.50	4,765.4	-298.4	-842.6	893.9	2.00	-2.00	0.00	
4,920.0	3.90	250.50	4,805.3	-299.4	-845.4	896.9	2.00	-2.00	0.00	
4,960.0	3.10	250.50	4,845.2	-300.2	-847.7	899.3	2.00	-2.00	0.00	
5,000.0	2.30	250.50	4,885.2	-300.8	-849.5	901.2	2.00	-2.00	0.00	
5,040.0	1.50	250.50	4,925.2	-301.3	-850.8	902.5	2.00	-2.00	0.00	
5,080.0	0.70	250.50	4,965.2	-301.5	-851.5	903.3	2.00	-2.00	0.00	
5,114.8	0.00	0.00	5,000.0	-301.6	-851.7	903.5	2.00	-2.00	314.38	
TARGET BHL 1988°FNL, 1972°FEL										
5,120.0	0.00	0.00	5,005.2	-301.6	-851.7	903.5	0.00	0.00	0.00	
5,160.0	0.00	0.00	5,045.2	-301.6	-851.7	903.5	0.00	0.00	0.00	
5,200.0	0.00	0.00	5,085.2	-301.6	-851.7	903.5	0.00	0.00	0.00	
5,240.0	0.00	0.00	5,125.2	-301.6	-851.7	903.5	0.00	0.00	0.00	
5,280.0	0.00	0.00	5,165.2	-301.6	-851.7	903.5	0.00	0.00	0.00	
5,320.0	0.00	0.00	5,205.2	-301.6	-851.7	903.5	0.00	0.00	0.00	
5,360.0	0.00	0.00	5,245.2	-301.6	-851.7	903.5	0.00	0.00	0.00	
5,400.0	0.00	0.00	5,285.2	-301.6	-851.7	903.5	0.00	0.00	0.00	
5,440.0	0.00	0.00	5,325.2	-301.6	-851.7	903.5	0.00	0.00	0.00	
5,480.0	0.00	0.00	5,365.2	-301.6	-851.7	903.5	0.00	0.00	0.00	
5,520.0	0.00	0.00	5,405.2	-301.6	-851.7	903.5	0.00	0.00	0.00	
5,560.0	0.00	0.00	5,445.2	-301.6	-851.7	903.5	0.00	0.00	0.00	
5,600.0	0.00	0.00	5,485.2	-301.6	-851.7	903.5	0.00	0.00	0.00	
5,640.0	0.00	0.00	5,525.2	-301.6	-851.7	903.5	0.00	0.00	0.00	
5,680.0	0.00	0.00	5,565.2	-301.6	-851.7	903.5	0.00	0.00	0.00	
5,720.0	0.00	0.00	5,605.2	-301.6	-851.7	903.5	0.00	0.00	0.00	
5,760.0	0.00	0.00	5,645.2	-301.6	-851.7	903.5	0.00	0.00	0.00	
5,800.0	0.00	0.00	5,685.2	-301.6	-851.7	903.5	0.00	0.00	0.00	
5,840.0	0.00	0.00	5,725.2	-301.6	-851.7	903.5	0.00	0.00	0.00	
5,880.0	0.00	0.00	5,765.2	-301.6	-851.7	903.5	0.00	0.00	0.00	
5,920.0	0.00	0.00	5,805.2	-301.6	-851.7	903.5	0.00	0.00	0.00	
5,960.0	0.00	0.00	5,845.2	-301.6	-851.7	903.5	0.00	0.00	0.00	
6,000.0	0.00	0.00	5,885.2	-301.6	-851.7	903.5	0.00	0.00	0.00	
6,040.0	0.00	0.00	5,925.2	-301.6	-851.7	903.5	0.00	0.00	0.00	
6,080.0	0.00	0.00	5,965.2	-301.6	-851.7	903.5	0.00	0.00	0.00	
6,120.0	0.00	0.00	6,005.2	-301.6	-851.7	903.5	0.00	0.00	0.00	
6,160.0	0.00	0.00	6,045.2	-301.6	-851.7	903.5	0.00	0.00	0.00	
6,200.0	0.00	0.00	6,085.2	-301.6	-851.7	903.5	0.00	0.00	0.00	

Database:	Landmark	Local Co-ordinate Reference:	Well SRC Pratt 32-29D
Company:	Synergy Resources	TVD Reference:	WELL @ 5222.0ft (Original Well Elev)
Project:	SEC.29-T1N-R68W	MD Reference:	WELL @ 5222.0ft (Original Well Elev)
Site:	SRC Pratt 41-29D Pad Sec.29-T1N-R68W	North Reference:	True
Well:	SRC Pratt 32-29D	Survey Calculation Method:	Minimum Curvature
Wellbore:	Wellbore #1		
Design:	Plan #1 (3-01-11)		

Planned Survey									
Measured Depth (ft)	Inclination (°)	Azimuth (°)	Vertical Depth (ft)	+N/-S (ft)	+E/-W (ft)	Vertical Section (ft)	Dogleg Rate (°/100ft)	Build Rate (°/100ft)	Turn Rate (°/100ft)
6,240.0	0.00	0.00	6,125.2	-301.6	-851.7	903.5	0.00	0.00	0.00
6,280.0	0.00	0.00	6,165.2	-301.6	-851.7	903.5	0.00	0.00	0.00
6,320.0	0.00	0.00	6,205.2	-301.6	-851.7	903.5	0.00	0.00	0.00
6,360.0	0.00	0.00	6,245.2	-301.6	-851.7	903.5	0.00	0.00	0.00
6,400.0	0.00	0.00	6,285.2	-301.6	-851.7	903.5	0.00	0.00	0.00
6,440.0	0.00	0.00	6,325.2	-301.6	-851.7	903.5	0.00	0.00	0.00
6,480.0	0.00	0.00	6,365.2	-301.6	-851.7	903.5	0.00	0.00	0.00
6,520.0	0.00	0.00	6,405.2	-301.6	-851.7	903.5	0.00	0.00	0.00
6,560.0	0.00	0.00	6,445.2	-301.6	-851.7	903.5	0.00	0.00	0.00
6,600.0	0.00	0.00	6,485.2	-301.6	-851.7	903.5	0.00	0.00	0.00
6,640.0	0.00	0.00	6,525.2	-301.6	-851.7	903.5	0.00	0.00	0.00
6,680.0	0.00	0.00	6,565.2	-301.6	-851.7	903.5	0.00	0.00	0.00
6,720.0	0.00	0.00	6,605.2	-301.6	-851.7	903.5	0.00	0.00	0.00
6,760.0	0.00	0.00	6,645.2	-301.6	-851.7	903.5	0.00	0.00	0.00
6,800.0	0.00	0.00	6,685.2	-301.6	-851.7	903.5	0.00	0.00	0.00
6,814.8	0.00	0.00	6,700.0	-301.6	-851.7	903.5	0.00	0.00	0.00
LEGAL BOX 400' X 400' 1988'FNL & 1972'FEL									
6,840.0	0.00	0.00	6,725.2	-301.6	-851.7	903.5	0.00	0.00	0.00
6,880.0	0.00	0.00	6,765.2	-301.6	-851.7	903.5	0.00	0.00	0.00
6,920.0	0.00	0.00	6,805.2	-301.6	-851.7	903.5	0.00	0.00	0.00
6,960.0	0.00	0.00	6,845.2	-301.6	-851.7	903.5	0.00	0.00	0.00
7,000.0	0.00	0.00	6,885.2	-301.6	-851.7	903.5	0.00	0.00	0.00
7,040.0	0.00	0.00	6,925.2	-301.6	-851.7	903.5	0.00	0.00	0.00
7,080.0	0.00	0.00	6,965.2	-301.6	-851.7	903.5	0.00	0.00	0.00
7,120.0	0.00	0.00	7,005.2	-301.6	-851.7	903.5	0.00	0.00	0.00
7,160.0	0.00	0.00	7,045.2	-301.6	-851.7	903.5	0.00	0.00	0.00
7,200.0	0.00	0.00	7,085.2	-301.6	-851.7	903.5	0.00	0.00	0.00
7,240.0	0.00	0.00	7,125.2	-301.6	-851.7	903.5	0.00	0.00	0.00
7,280.0	0.00	0.00	7,165.2	-301.6	-851.7	903.5	0.00	0.00	0.00
7,320.0	0.00	0.00	7,205.2	-301.6	-851.7	903.5	0.00	0.00	0.00
7,360.0	0.00	0.00	7,245.2	-301.6	-851.7	903.5	0.00	0.00	0.00
7,400.0	0.00	0.00	7,285.2	-301.6	-851.7	903.5	0.00	0.00	0.00
7,440.0	0.00	0.00	7,325.2	-301.6	-851.7	903.5	0.00	0.00	0.00
7,480.0	0.00	0.00	7,365.2	-301.6	-851.7	903.5	0.00	0.00	0.00
7,520.0	0.00	0.00	7,405.2	-301.6	-851.7	903.5	0.00	0.00	0.00
7,560.0	0.00	0.00	7,445.2	-301.6	-851.7	903.5	0.00	0.00	0.00
7,600.0	0.00	0.00	7,485.2	-301.6	-851.7	903.5	0.00	0.00	0.00
7,640.0	0.00	0.00	7,525.2	-301.6	-851.7	903.5	0.00	0.00	0.00
7,680.0	0.00	0.00	7,565.2	-301.6	-851.7	903.5	0.00	0.00	0.00
7,720.0	0.00	0.00	7,605.2	-301.6	-851.7	903.5	0.00	0.00	0.00
7,760.0	0.00	0.00	7,645.2	-301.6	-851.7	903.5	0.00	0.00	0.00
7,800.0	0.00	0.00	7,685.2	-301.6	-851.7	903.5	0.00	0.00	0.00
7,840.0	0.00	0.00	7,725.2	-301.6	-851.7	903.5	0.00	0.00	0.00
7,880.0	0.00	0.00	7,765.2	-301.6	-851.7	903.5	0.00	0.00	0.00
7,920.0	0.00	0.00	7,805.2	-301.6	-851.7	903.5	0.00	0.00	0.00
7,960.0	0.00	0.00	7,845.2	-301.6	-851.7	903.5	0.00	0.00	0.00
8,000.0	0.00	0.00	7,885.2	-301.6	-851.7	903.5	0.00	0.00	0.00
8,040.0	0.00	0.00	7,925.2	-301.6	-851.7	903.5	0.00	0.00	0.00
8,080.0	0.00	0.00	7,965.2	-301.6	-851.7	903.5	0.00	0.00	0.00
8,120.0	0.00	0.00	8,005.2	-301.6	-851.7	903.5	0.00	0.00	0.00
8,160.0	0.00	0.00	8,045.2	-301.6	-851.7	903.5	0.00	0.00	0.00
8,200.0	0.00	0.00	8,085.2	-301.6	-851.7	903.5	0.00	0.00	0.00
8,240.0	0.00	0.00	8,125.2	-301.6	-851.7	903.5	0.00	0.00	0.00

Database:	Landmark	Local Co-ordinate Reference:	Well SRC Pratt 32-29D
Company:	Synergy Resources	TVD Reference:	WELL @ 5222.0ft (Original Well Elev)
Project:	SEC.29-T1N-R68W	MD Reference:	WELL @ 5222.0ft (Original Well Elev)
Site:	SRC Pratt 41-29D Pad Sec.29-T1N-R68W	North Reference:	True
Well:	SRC Pratt 32-29D	Survey Calculation Method:	Minimum Curvature
Wellbore:	Wellbore #1		
Design:	Plan #1 (3-01-11)		

Planned Survey										
Measured Depth (ft)	Inclination (°)	Azimuth (°)	Vertical Depth (ft)	+N/-S (ft)	+E/-W (ft)	Vertical Section (ft)	Dogleg Rate (°/100ft)	Build Rate (°/100ft)	Turn Rate (°/100ft)	
8,274.8	0.00	0.00	8,160.0	-301.6	-851.7	903.5	0.00	0.00	0.00	

Targets										
Target Name	Dip Angle (°)	Dip Dir. (°)	TVD (ft)	+N/-S (ft)	+E/-W (ft)	Northing (ft)	Easting (ft)	Latitude	Longitude	
- hit/miss target										
- Shape										
LEGAL BOX 400' X 400'	0.00	0.00	6,700.0	-301.6	-851.7	1,251,887.75	3,132,951.00	40.023842	-105.025267	
- plan hits target center										
- Rectangle (sides W400.0 H400.0 D1,460.0)										
TARGET BHL 1988'F	0.00	0.00	5,000.0	-301.6	-851.7	1,251,887.75	3,132,951.02	40.023842	-105.025267	
- plan hits target center										
- Point										

Casing Points									
Measured Depth (ft)	Vertical Depth (ft)	Name			Casing Diameter (")	Hole Diameter (")			
900.0	900.0	8 5/8"			8-5/8	12-1/4			



Directional

Synergy Resources

SEC.29-T1N-R68W

SRC Pratt 41-29D Pad Sec.29-T1N-R68W

SRC Pratt 32-29D

Wellbore #1

Plan #1 (3-01-11)

Anticollision Report

01 March, 2011

Company:	Synergy Resources	Local Co-ordinate Reference:	Well SRC Pratt 32-29D
Project:	SEC.29-T1N-R68W	TVD Reference:	WELL @ 5222.0ft (Original Well Elev)
Reference Site:	SRC Pratt 41-29D Pad Sec.29-T1N-R68W	MD Reference:	WELL @ 5222.0ft (Original Well Elev)
Site Error:	0.0ft	North Reference:	True
Reference Well:	SRC Pratt 32-29D	Survey Calculation Method:	Minimum Curvature
Well Error:	0.0ft	Output errors are at	2.00 sigma
Reference Wellbore	Wellbore #1	Database:	Landmark
Reference Design:	Plan #1 (3-01-11)	Offset TVD Reference:	Offset Datum

Reference	Plan #1 (3-01-11)		
Filter type:	NO GLOBAL FILTER: Using user defined selection & filtering criteria		
Interpolation Method:	Stations	Error Model:	ISCWSA
Depth Range:	Unlimited	Scan Method:	Closest Approach 3D
Results Limited by:	Maximum center-center distance of 10,000.0ft	Error Surface:	Elliptical Conic
Warning Levels Evaluated at:	2.00 Sigma		

Survey Tool Program	Date 3/1/2011			
From (ft)	To (ft)	Survey (Wellbore)	Tool Name	Description
0.0	8,274.8	Plan #1 (3-01-11) (Wellbore #1)	MWD	MWD - Standard

Summary						
Site Name	Reference Measured Depth (ft)	Offset Measured Depth (ft)	Distance Between Centres (ft)	Distance Between Ellipses (ft)	Separation Factor	Warning
Offset Well - Wellbore - Design						
SRC Pratt 41-29D Pad Sec.29-T1N-R68W						
SRC Pratt 29OD - Wellbore #1 - Plan #1 (3-01-11)	200.0	200.0	20.1	19.5	31.160	CC, ES
SRC Pratt 29OD - Wellbore #1 - Plan #1 (3-01-11)	500.0	497.1	34.4	32.4	17.317	SF
SRC Pratt 29SD - Wellbore #1 - Plan #1 (3-01-11)	1,000.0	1,002.0	19.8	15.5	4.658	CC, ES
SRC Pratt 29SD - Wellbore #1 - Plan #1 (3-01-11)	1,100.0	1,102.0	21.1	16.4	4.510	SF

Offset Design		SRC Pratt 41-29D Pad Sec.29-T1N-R68W - SRC Pratt 29OD - Wellbore #1 - Plan #1 (3-01-11)										Offset Site Error:		0.0 ft	
Survey Program:		0-MWD										Offset Well Error:		0.0 ft	
Reference		Offset		Semi Major Axis			Distance								
Measured Depth	Vertical Depth	Measured Depth	Vertical Depth	Reference	Offset	Highside Toolface	Offset Wellbore Centre		Between Centres	Between Ellipses	Minimum Separation	Separation Factor	Warning		
(ft)	(ft)	(ft)	(ft)	(ft)	(ft)	(°)	+N/-S (ft)	+E/-W (ft)	(ft)	(ft)	(ft)				
0.0	0.0	0.0	0.0	0.0	0.0	-152.63	-17.9	-9.2	20.1						
100.0	100.0	100.0	100.0	0.1	0.1	-152.63	-17.9	-9.2	20.1	19.9	0.20	102.793			
200.0	200.0	200.0	200.0	0.3	0.3	-152.63	-17.9	-9.2	20.1	19.5	0.65	31.160	CC, ES		
300.0	300.0	299.4	299.3	0.5	0.5	-150.27	-18.8	-10.7	21.6	20.5	1.08	20.072			
400.0	400.0	398.5	398.3	0.8	0.7	-144.87	-21.5	-15.1	26.3	24.8	1.52	17.344			
500.0	500.0	497.1	496.6	1.0	1.0	-139.23	-25.9	-22.4	34.4	32.4	1.99	17.317	SF		
600.0	600.0	595.1	593.8	1.2	1.3	-134.74	-32.1	-32.4	46.0	43.5	2.49	18.463			
700.0	700.0	692.1	689.7	1.4	1.6	-131.51	-40.0	-45.1	61.2	58.1	3.04	20.119			
800.0	800.0	788.0	783.9	1.7	2.0	-129.25	-49.4	-60.4	79.7	76.1	3.63	21.962			
900.0	900.0	882.6	876.2	1.9	2.4	-127.64	-60.3	-78.2	101.5	97.3	4.26	23.831			
1,000.0	1,000.0	975.7	966.2	2.1	2.9	-126.49	-72.6	-98.1	126.6	121.7	4.94	25.649			
1,100.0	1,100.0	1,067.6	1,054.4	2.3	3.4	-16.16	-86.2	-120.3	153.2	148.5	4.76	32.160			
1,200.0	1,199.8	1,158.7	1,140.9	2.5	3.9	-15.77	-101.2	-144.6	179.7	174.5	5.21	34.471			
1,300.0	1,299.5	1,254.7	1,231.5	2.7	4.6	-15.68	-117.9	-171.7	204.8	199.1	5.69	36.012			
1,400.0	1,398.7	1,352.3	1,323.5	3.0	5.2	-15.85	-134.9	-199.4	226.7	220.5	6.16	36.784			
1,500.0	1,497.5	1,450.5	1,416.1	3.2	5.9	-16.21	-152.0	-227.2	245.3	238.6	6.67	36.803			
1,600.0	1,595.6	1,549.3	1,509.3	3.6	6.6	-16.74	-169.3	-255.2	260.6	253.5	7.19	36.275			
1,700.0	1,693.1	1,648.5	1,602.9	3.9	7.3	-17.45	-186.6	-283.2	272.7	265.0	7.73	35.297			
1,786.3	1,776.5	1,734.4	1,683.8	4.3	7.9	-18.19	-201.5	-307.6	280.5	272.3	8.21	34.152			
1,800.0	1,789.7	1,748.0	1,696.7	4.3	8.0	-18.32	-203.9	-311.4	281.5	273.3	8.30	33.936			
1,900.0	1,885.9	1,847.6	1,790.6	4.8	8.6	-19.28	-221.3	-339.6	289.2	280.3	8.92	32.442			
2,000.0	1,982.2	1,947.2	1,884.5	5.3	9.3	-20.18	-238.6	-367.8	297.0	287.4	9.56	31.082			
2,100.0	2,078.4	2,046.8	1,978.5	5.8	10.0	-21.04	-256.0	-396.0	304.8	294.6	10.21	29.843			

CC - Min centre to center distance or convergent point, SF - min separation factor, ES - min ellipse separation

Company:	Synergy Resources	Local Co-ordinate Reference:	Well SRC Pratt 32-29D
Project:	SEC.29-T1N-R68W	TVD Reference:	WELL @ 5222.0ft (Original Well Elev)
Reference Site:	SRC Pratt 41-29D Pad Sec.29-T1N-R68W	MD Reference:	WELL @ 5222.0ft (Original Well Elev)
Site Error:	0.0ft	North Reference:	True
Reference Well:	SRC Pratt 32-29D	Survey Calculation Method:	Minimum Curvature
Well Error:	0.0ft	Output errors are at	2.00 sigma
Reference Wellbore	Wellbore #1	Database:	Landmark
Reference Design:	Plan #1 (3-01-11)	Offset TVD Reference:	Offset Datum

Offset Design												Offset Site Error:	0.0ft
Survey Program: 0-MWD												Offset Well Error:	0.0ft
Reference		Offset		Semi Major Axis			Distance						
Measured Depth (ft)	Vertical Depth (ft)	Measured Depth (ft)	Vertical Depth (ft)	Reference (ft)	Offset (ft)	Highside Toolface (°)	Offset Wellbore Centre +N/-S (ft)	+E/-W (ft)	Between Centres (ft)	Between Ellipses (ft)	Minimum Separation (ft)	Separation Factor	Warning
2,200.0	2,174.7	2,146.4	2,072.4	6.3	10.7	-21.86	-273.4	-424.2	312.7	301.8	10.89	28.712	
2,300.0	2,270.9	2,246.0	2,166.3	6.9	11.4	-22.64	-290.7	-452.4	320.7	309.1	11.59	27.677	
2,400.0	2,367.2	2,345.6	2,260.2	7.4	12.1	-23.37	-308.1	-480.6	328.7	316.4	12.30	26.730	
2,500.0	2,463.4	2,445.2	2,354.2	7.9	12.8	-24.08	-325.5	-508.8	336.8	323.7	13.02	25.860	
2,600.0	2,559.7	2,544.7	2,448.1	8.5	13.5	-24.75	-342.8	-537.0	344.9	331.1	13.76	25.060	
2,700.0	2,656.0	2,644.3	2,542.0	9.0	14.2	-25.39	-360.2	-565.2	353.0	338.5	14.51	24.323	
2,800.0	2,752.2	2,743.9	2,635.9	9.6	14.9	-26.00	-377.5	-593.4	361.2	346.0	15.28	23.643	
2,900.0	2,848.5	2,843.5	2,729.9	10.2	15.6	-26.58	-394.9	-621.6	369.5	353.4	16.06	23.013	
3,000.0	2,944.7	2,943.1	2,823.8	10.7	16.3	-27.14	-412.3	-649.8	377.8	360.9	16.84	22.430	
3,100.0	3,041.0	3,042.7	2,917.7	11.3	17.0	-27.67	-429.6	-678.0	386.1	368.4	17.64	21.888	
3,200.0	3,137.2	3,142.3	3,011.6	11.9	17.7	-28.18	-447.0	-706.2	394.4	376.0	18.44	21.383	
3,300.0	3,233.5	3,241.9	3,105.6	12.4	18.4	-28.67	-464.4	-734.4	402.8	383.5	19.26	20.914	
3,400.0	3,329.8	3,341.5	3,199.5	13.0	19.1	-29.14	-481.7	-762.6	411.2	391.1	20.08	20.475	
3,500.0	3,426.0	3,441.1	3,293.4	13.6	19.8	-29.59	-499.1	-790.8	419.6	398.7	20.91	20.065	
3,600.0	3,522.3	3,540.7	3,387.3	14.1	20.5	-30.03	-516.5	-819.0	428.0	406.3	21.75	19.680	
3,700.0	3,618.5	3,640.3	3,481.2	14.7	21.2	-30.44	-533.8	-847.2	436.5	413.9	22.59	19.320	
3,800.0	3,714.8	3,739.8	3,575.2	15.3	21.9	-30.85	-551.2	-875.4	445.0	421.6	23.45	18.981	
3,900.0	3,811.0	3,839.4	3,669.1	15.9	22.6	-31.23	-568.6	-903.6	453.5	429.2	24.30	18.663	
4,000.0	3,907.3	3,939.0	3,763.0	16.4	23.3	-31.60	-585.9	-931.8	462.1	436.9	25.16	18.362	
4,100.0	4,003.6	4,038.6	3,856.9	17.0	24.0	-31.96	-603.3	-960.0	470.6	444.6	26.03	18.079	
4,200.0	4,099.8	4,138.2	3,950.9	17.6	24.7	-32.31	-620.6	-988.2	479.2	452.3	26.90	17.811	
4,300.0	4,196.1	4,237.8	4,044.8	18.2	25.4	-32.64	-638.0	-1,016.4	487.8	460.0	27.78	17.558	
4,328.5	4,223.5	4,266.2	4,071.6	18.3	25.6	-32.73	-643.0	-1,024.5	490.2	462.2	28.03	17.488	
4,400.0	4,292.6	4,337.3	4,138.7	18.7	26.1	-32.98	-655.4	-1,044.6	497.1	468.5	28.62	17.370	
4,500.0	4,389.9	4,436.6	4,232.3	19.1	26.8	-33.16	-672.7	-1,072.7	509.3	480.0	29.33	17.367	
4,600.0	4,487.9	4,535.4	4,325.5	19.4	27.5	-33.16	-689.9	-1,100.7	524.3	494.4	29.93	17.518	
4,700.0	4,586.6	4,633.7	4,418.2	19.7	28.1	-33.00	-707.0	-1,128.5	542.3	511.8	30.44	17.817	
4,800.0	4,685.8	4,731.4	4,510.3	19.9	28.8	-32.70	-724.1	-1,156.2	563.1	532.3	30.84	18.256	
4,900.0	4,785.4	4,828.3	4,601.7	20.2	29.5	-32.29	-741.0	-1,183.6	586.9	555.7	31.16	18.833	
5,000.0	4,885.2	4,924.3	4,692.3	20.3	30.2	-31.78	-757.7	-1,210.8	613.6	582.2	31.40	19.543	
5,100.0	4,985.2	5,019.4	4,781.9	20.4	30.8	-31.21	-774.3	-1,237.7	643.3	611.7	31.56	20.386	
5,114.8	5,000.0	5,033.4	4,795.1	20.5	30.9	-140.62	-776.7	-1,241.7	647.9	616.4	31.57	20.522	
5,200.0	5,085.2	5,113.7	4,870.8	20.5	31.5	-139.84	-790.7	-1,264.4	674.9	643.2	31.70	21.290	
5,300.0	5,185.2	5,212.1	4,963.6	20.7	32.2	-138.97	-807.8	-1,292.3	706.7	674.8	31.88	22.167	
5,400.0	5,285.2	5,337.7	5,083.2	20.8	32.8	-138.04	-828.0	-1,325.0	736.1	704.1	32.07	22.953	
5,500.0	5,385.2	5,466.6	5,207.6	20.9	33.3	-137.30	-845.8	-1,353.9	761.5	729.2	32.32	23.565	
5,600.0	5,485.2	5,598.5	5,336.3	21.0	33.8	-136.71	-861.0	-1,378.5	782.7	750.1	32.60	24.010	
5,700.0	5,585.2	5,732.9	5,468.6	21.1	34.2	-136.27	-873.2	-1,398.4	799.5	766.6	32.91	24.297	
5,800.0	5,685.2	5,869.3	5,603.8	21.2	34.5	-135.96	-882.3	-1,413.2	811.8	778.6	33.23	24.430	
5,900.0	5,785.2	6,007.0	5,741.1	21.4	34.8	-135.77	-888.0	-1,422.5	819.5	786.0	33.57	24.415	
6,000.0	5,885.2	6,145.4	5,879.4	21.5	34.9	-135.70	-890.3	-1,426.2	822.6	788.7	33.91	24.259	
6,100.0	5,985.2	6,251.1	5,985.2	21.6	35.0	-135.70	-890.3	-1,426.2	822.6	788.4	34.22	24.041	
6,200.0	6,085.2	6,351.1	6,085.2	21.7	35.1	-135.70	-890.3	-1,426.2	822.6	788.1	34.52	23.829	
6,300.0	6,185.2	6,451.1	6,185.2	21.9	35.1	-135.70	-890.3	-1,426.2	822.6	787.8	34.83	23.619	
6,400.0	6,285.2	6,551.1	6,285.2	22.0	35.2	-135.70	-890.3	-1,426.2	822.6	787.5	35.14	23.411	
6,500.0	6,385.2	6,651.1	6,385.2	22.1	35.3	-135.70	-890.3	-1,426.2	822.6	787.2	35.45	23.204	
6,600.0	6,485.2	6,751.1	6,485.2	22.3	35.4	-135.70	-890.3	-1,426.2	822.6	786.9	35.77	22.999	
6,700.0	6,585.2	6,851.1	6,585.2	22.4	35.4	-135.70	-890.3	-1,426.2	822.6	786.6	36.09	22.796	
6,800.0	6,685.2	6,951.1	6,685.2	22.5	35.5	-135.70	-890.3	-1,426.2	822.6	786.2	36.41	22.595	
6,900.0	6,785.2	7,051.1	6,785.2	22.7	35.6	-135.70	-890.3	-1,426.2	822.6	785.9	36.73	22.396	
7,000.0	6,885.2	7,151.1	6,885.2	22.8	35.7	-135.70	-890.3	-1,426.2	822.6	785.6	37.06	22.199	
7,100.0	6,985.2	7,251.1	6,985.2	23.0	35.8	-135.70	-890.3	-1,426.2	822.6	785.3	37.39	22.004	

CC - Min centre to center distance or convergent point, SF - min separation factor, ES - min ellipse separation

Offset Design SRC Pratt 41-29D Pad Sec.29-T1N-R68W - SRC Pratt 29OD - Wellbore #1 - Plan #1 (3-01-11)													Offset Site Error: 0.0 ft	
Survey Program: 0-MWD													Offset Well Error: 0.0 ft	
Reference		Offset		Semi Major Axis			Distance							
Measured Depth	Vertical Depth	Measured Depth	Vertical Depth	Reference	Offset	Highside Toolface	Offset Wellbore Centre		Between Centres	Between Ellipses	Minimum Separation	Separation Factor	Warning	
Depth (ft)	Depth (ft)	Depth (ft)	Depth (ft)	(ft)	(ft)	(°)	+N/-S (ft)	+E/-W (ft)	(ft)	(ft)	(ft)			
7,200.0	7,085.2	7,351.1	7,085.2	23.1	35.9	-135.70	-890.3	-1,426.2	822.6	784.9	37.72	21.810		
7,300.0	7,185.2	7,451.1	7,185.2	23.2	35.9	-135.70	-890.3	-1,426.2	822.6	784.6	38.05	21.619		
7,400.0	7,285.2	7,551.1	7,285.2	23.4	36.0	-135.70	-890.3	-1,426.2	822.6	784.3	38.39	21.430		
7,500.0	7,385.2	7,651.1	7,385.2	23.5	36.1	-135.70	-890.3	-1,426.2	822.6	783.9	38.73	21.243		
7,600.0	7,485.2	7,751.1	7,485.2	23.7	36.2	-135.70	-890.3	-1,426.2	822.6	783.6	39.07	21.058		
7,700.0	7,585.2	7,851.1	7,585.2	23.8	36.3	-135.70	-890.3	-1,426.2	822.6	783.2	39.41	20.875		
7,800.0	7,685.2	7,951.1	7,685.2	24.0	36.4	-135.70	-890.3	-1,426.2	822.6	782.9	39.75	20.694		
7,900.0	7,785.2	8,051.1	7,785.2	24.1	36.5	-135.70	-890.3	-1,426.2	822.6	782.5	40.10	20.515		
8,000.0	7,885.2	8,151.1	7,885.2	24.3	36.6	-135.70	-890.3	-1,426.2	822.6	782.2	40.45	20.338		
8,100.0	7,985.2	8,251.1	7,985.2	24.4	36.7	-135.70	-890.3	-1,426.2	822.6	781.8	40.80	20.163		
8,200.0	8,085.2	8,351.1	8,085.2	24.6	36.8	-135.70	-890.3	-1,426.2	822.6	781.5	41.15	19.991		
8,274.8	8,160.0	8,426.0	8,160.0	24.7	36.9	-135.70	-890.3	-1,426.2	822.6	781.2	41.42	19.863		

Company:	Synergy Resources	Local Co-ordinate Reference:	Well SRC Pratt 32-29D
Project:	SEC.29-T1N-R68W	TVD Reference:	WELL @ 5222.0ft (Original Well Elev)
Reference Site:	SRC Pratt 41-29D Pad Sec.29-T1N-R68W	MD Reference:	WELL @ 5222.0ft (Original Well Elev)
Site Error:	0.0ft	North Reference:	True
Reference Well:	SRC Pratt 32-29D	Survey Calculation Method:	Minimum Curvature
Well Error:	0.0ft	Output errors are at	2.00 sigma
Reference Wellbore	Wellbore #1	Database:	Landmark
Reference Design:	Plan #1 (3-01-11)	Offset TVD Reference:	Offset Datum

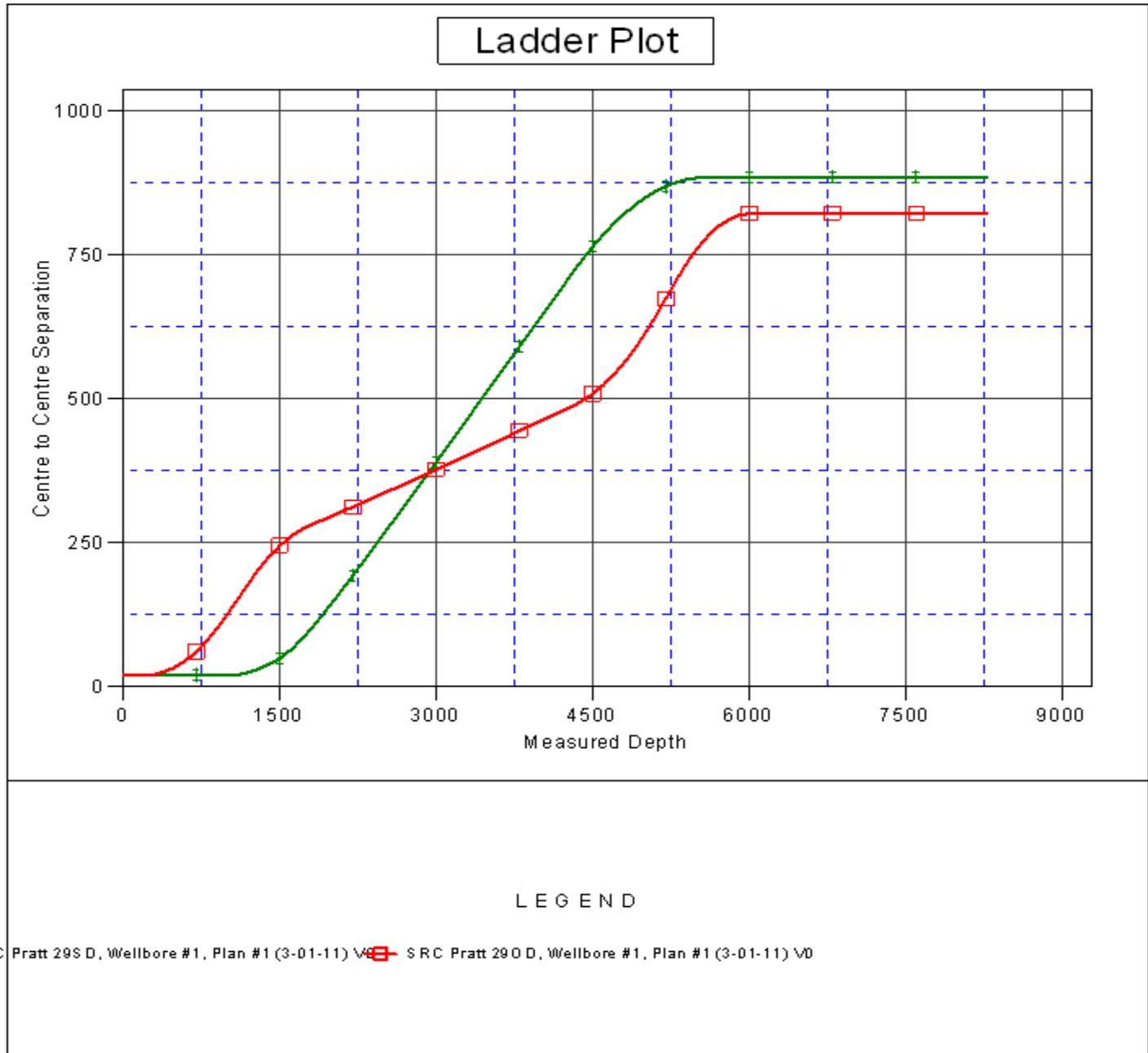
Offset Design												Offset Site Error:	0.0ft
Survey Program: 0-MWD												Offset Well Error:	0.0ft
Reference		Offset		Semi Major Axis			Distance						
Measured Depth (ft)	Vertical Depth (ft)	Measured Depth (ft)	Vertical Depth (ft)	Reference (ft)	Offset (ft)	Highside Tooface (")	Offset Wellbore Centre +N/-S (ft)	+E/-W (ft)	Between Centres (ft)	Between Ellipses (ft)	Minimum Separation (ft)	Separation Factor	Warning
0.0	0.0	2.0	2.0	0.0	0.0	27.86	17.5	9.2	19.8				
100.0	100.0	102.0	102.0	0.1	0.1	27.86	17.5	9.2	19.8	19.6	0.20	98.869	
200.0	200.0	202.0	202.0	0.3	0.3	27.86	17.5	9.2	19.8	19.1	0.65	30.448	
300.0	300.0	302.0	302.0	0.5	0.6	27.86	17.5	9.2	19.8	18.7	1.10	17.995	
400.0	400.0	402.0	402.0	0.8	0.8	27.86	17.5	9.2	19.8	18.2	1.55	12.771	
500.0	500.0	502.0	502.0	1.0	1.0	27.86	17.5	9.2	19.8	17.8	2.00	9.898	
600.0	600.0	602.0	602.0	1.2	1.2	27.86	17.5	9.2	19.8	17.3	2.45	8.080	
700.0	700.0	702.0	702.0	1.4	1.5	27.86	17.5	9.2	19.8	16.9	2.90	6.827	
800.0	800.0	802.0	802.0	1.7	1.7	27.86	17.5	9.2	19.8	16.4	3.35	5.910	
900.0	900.0	902.0	902.0	1.9	1.9	27.86	17.5	9.2	19.8	16.0	3.80	5.210	
1,000.0	1,000.0	1,002.0	1,002.0	2.1	2.1	27.86	17.5	9.2	19.8	15.5	4.25	4.658 CC, ES	
1,100.0	1,100.0	1,102.0	1,102.0	2.3	2.3	140.55	17.5	9.2	21.1	16.4	4.68	4.510 SF	
1,200.0	1,199.8	1,201.9	1,201.9	2.5	2.6	148.04	17.5	9.2	25.4	20.3	5.09	4.979	
1,300.0	1,299.5	1,302.4	1,302.4	2.7	2.8	157.94	15.7	8.9	31.6	26.1	5.48	5.768	
1,400.0	1,398.7	1,402.8	1,402.6	3.0	2.9	169.28	10.5	7.7	39.4	33.5	5.84	6.749	
1,500.0	1,497.5	1,502.8	1,502.2	3.2	3.1	-179.77	1.9	5.9	49.7	43.5	6.20	8.017	
1,600.0	1,595.6	1,602.3	1,601.0	3.6	3.3	-170.26	-10.1	3.3	63.3	56.7	6.61	9.583	
1,700.0	1,693.1	1,701.2	1,698.6	3.9	3.6	-162.45	-25.2	0.0	80.3	73.3	7.07	11.368	
1,786.3	1,776.5	1,785.8	1,781.7	4.3	3.8	-156.97	-40.8	-3.4	97.8	90.3	7.53	12.996	
1,800.0	1,789.7	1,799.2	1,794.8	4.3	3.9	-156.21	-43.5	-4.0	100.8	93.2	7.61	13.249	
1,900.0	1,885.9	1,896.6	1,889.7	4.8	4.2	-150.90	-64.9	-8.6	123.0	114.7	8.28	14.844	
2,000.0	1,982.2	1,993.4	1,983.5	5.3	4.5	-146.23	-88.5	-13.8	145.8	136.7	9.04	16.122	
2,100.0	2,078.4	2,090.2	2,077.2	5.8	4.9	-142.76	-112.3	-18.9	169.3	159.5	9.85	17.189	
2,200.0	2,174.7	2,186.9	2,170.8	6.3	5.3	-140.15	-136.0	-24.1	193.3	182.6	10.69	18.079	
2,300.0	2,270.9	2,283.7	2,264.4	6.9	5.8	-138.11	-159.8	-29.2	217.5	206.0	11.55	18.828	
2,400.0	2,367.2	2,380.4	2,358.1	7.4	6.2	-136.48	-183.6	-34.4	242.0	229.6	12.44	19.460	
2,500.0	2,463.4	2,477.2	2,451.7	7.9	6.6	-135.15	-207.3	-39.6	266.6	253.3	13.34	19.996	
2,600.0	2,559.7	2,573.9	2,545.4	8.5	7.1	-134.04	-231.1	-44.7	291.4	277.1	14.25	20.455	
2,700.0	2,656.0	2,670.7	2,639.0	9.0	7.6	-133.11	-254.9	-49.9	316.2	301.0	15.17	20.851	
2,800.0	2,752.2	2,767.4	2,732.7	9.6	8.0	-132.31	-278.7	-55.0	341.1	325.0	16.09	21.196	
2,900.0	2,848.5	2,864.2	2,826.3	10.2	8.5	-131.62	-302.4	-60.2	366.1	349.0	17.03	21.497	
3,000.0	2,944.7	2,960.9	2,919.9	10.7	9.0	-131.02	-326.2	-65.4	391.0	373.1	17.97	21.763	
3,100.0	3,041.0	3,057.7	3,013.6	11.3	9.5	-130.49	-350.0	-70.5	416.1	397.2	18.91	21.999	
3,200.0	3,137.2	3,154.4	3,107.2	11.9	10.0	-130.02	-373.7	-75.7	441.1	421.3	19.86	22.209	
3,300.0	3,233.5	3,251.2	3,200.9	12.4	10.4	-129.60	-397.5	-80.8	466.2	445.4	20.82	22.397	
3,400.0	3,329.8	3,347.9	3,294.5	13.0	10.9	-129.22	-421.3	-86.0	491.3	469.5	21.77	22.566	
3,500.0	3,426.0	3,444.7	3,388.2	13.6	11.4	-128.89	-445.0	-91.2	516.4	493.7	22.73	22.719	
3,600.0	3,522.3	3,541.4	3,481.8	14.1	11.9	-128.58	-468.8	-96.3	541.6	517.9	23.69	22.859	
3,700.0	3,618.5	3,638.2	3,575.4	14.7	12.4	-128.30	-492.6	-101.5	566.7	542.1	24.66	22.985	
3,800.0	3,714.8	3,734.9	3,669.1	15.3	12.9	-128.04	-516.4	-106.6	591.9	566.2	25.62	23.102	
3,900.0	3,811.0	3,831.7	3,762.7	15.9	13.4	-127.80	-540.1	-111.8	617.0	590.4	26.59	23.208	
4,000.0	3,907.3	3,928.4	3,856.4	16.4	13.9	-127.59	-563.9	-117.0	642.2	614.7	27.56	23.306	
4,100.0	4,003.6	4,025.2	3,950.0	17.0	14.4	-127.39	-587.7	-122.1	667.4	638.9	28.52	23.397	
4,200.0	4,099.8	4,121.9	4,043.7	17.6	14.9	-127.20	-611.4	-127.3	692.6	663.1	29.50	23.481	
4,300.0	4,196.1	4,218.7	4,137.3	18.2	15.4	-127.03	-635.2	-132.4	717.8	687.3	30.47	23.559	
4,328.5	4,223.5	4,246.3	4,164.0	18.3	15.6	-126.98	-642.0	-133.9	725.0	694.2	30.75	23.580	
4,400.0	4,292.6	4,315.6	4,231.1	18.7	15.9	-127.10	-659.0	-137.6	742.5	711.1	31.42	23.627	
4,500.0	4,389.9	4,412.8	4,325.2	19.1	16.4	-127.06	-682.9	-142.8	765.2	732.9	32.30	23.695	
4,600.0	4,487.9	4,510.3	4,419.5	19.4	16.9	-126.80	-706.9	-148.0	786.0	752.8	33.14	23.717	
4,700.0	4,586.6	4,607.9	4,514.1	19.7	17.4	-126.35	-730.8	-153.2	804.8	770.8	33.95	23.704	
4,800.0	4,685.8	4,705.6	4,608.6	19.9	18.0	-125.70	-754.8	-158.4	821.7	787.0	34.73	23.662	
4,900.0	4,785.4	4,803.2	4,703.0	20.2	18.5	-124.87	-778.8	-163.6	836.9	801.5	35.46	23.600	

CC - Min centre to center distance or convergent point, SF - min separation factor, ES - min ellipse separation

Offset Design SRC Pratt 41-29D Pad Sec.29-T1N-R68W - SRC Pratt 29SD - Wellbore #1 - Plan #1 (3-01-11)													Offset Site Error: 0.0 ft	
Survey Program: 0-MWD													Offset Well Error: 0.0 ft	
Reference		Offset		Semi Major Axis			Distance							
Measured Depth (ft)	Vertical Depth (ft)	Measured Depth (ft)	Vertical Depth (ft)	Reference (ft)	Offset (ft)	Highside Toolface (°)	Offset Wellbore Centre +N/-S (ft)	+E/-W (ft)	Between Centres (ft)	Between Ellipses (ft)	Minimum Separation (ft)	Separation Factor	Warning	
5,000.0	4,885.2	4,903.2	4,799.8	20.3	19.0	-123.84	-803.3	-168.9	850.5	814.3	36.15	23.527		
5,100.0	4,985.2	5,015.2	4,909.0	20.4	19.4	-122.62	-828.0	-174.3	861.4	824.7	36.69	23.480		
5,114.8	5,000.0	5,032.0	4,925.4	20.5	19.4	128.05	-831.3	-175.0	862.8	826.0	36.76	23.471		
5,200.0	5,085.2	5,128.9	5,020.6	20.5	19.7	129.12	-848.7	-178.8	869.8	832.6	37.17	23.402		
5,300.0	5,185.2	5,244.1	5,134.6	20.7	20.0	130.11	-865.3	-182.4	876.6	839.0	37.60	23.314		
5,400.0	5,285.2	5,360.5	5,250.3	20.8	20.3	130.83	-877.6	-185.0	881.8	843.8	37.98	23.213		
5,500.0	5,385.2	5,477.7	5,367.3	20.9	20.5	131.27	-885.2	-186.7	885.0	846.7	38.32	23.093		
5,600.0	5,485.2	5,595.4	5,484.9	21.0	20.7	131.44	-888.2	-187.3	886.2	847.6	38.61	22.952		
5,700.0	5,585.2	5,697.7	5,587.2	21.1	20.8	131.44	-888.2	-187.4	886.2	847.4	38.87	22.803		
5,800.0	5,685.2	5,797.7	5,687.2	21.2	20.9	131.44	-888.2	-187.4	886.2	847.1	39.11	22.660		
5,900.0	5,785.2	5,897.7	5,787.2	21.4	21.0	131.44	-888.2	-187.4	886.2	846.9	39.36	22.518		
6,000.0	5,885.2	5,997.7	5,887.2	21.5	21.1	131.44	-888.2	-187.4	886.2	846.6	39.61	22.375		
6,100.0	5,985.2	6,097.7	5,987.2	21.6	21.2	131.44	-888.2	-187.4	886.2	846.4	39.86	22.231		
6,200.0	6,085.2	6,197.7	6,087.2	21.7	21.3	131.44	-888.2	-187.4	886.2	846.1	40.12	22.088		
6,300.0	6,185.2	6,297.7	6,187.2	21.9	21.4	131.44	-888.2	-187.4	886.2	845.9	40.38	21.945		
6,400.0	6,285.2	6,397.7	6,287.2	22.0	21.6	131.44	-888.2	-187.4	886.2	845.6	40.65	21.802		
6,500.0	6,385.2	6,497.7	6,387.2	22.1	21.7	131.44	-888.2	-187.4	886.2	845.3	40.92	21.659		
6,600.0	6,485.2	6,597.7	6,487.2	22.3	21.8	131.44	-888.2	-187.4	886.2	845.1	41.19	21.516		
6,700.0	6,585.2	6,697.7	6,587.2	22.4	21.9	131.44	-888.2	-187.4	886.2	844.8	41.46	21.374		
6,800.0	6,685.2	6,797.7	6,687.2	22.5	22.1	131.44	-888.2	-187.4	886.2	844.5	41.74	21.232		
6,900.0	6,785.2	6,897.7	6,787.2	22.7	22.2	131.44	-888.2	-187.4	886.2	844.2	42.02	21.090		
7,000.0	6,885.2	6,997.7	6,887.2	22.8	22.3	131.44	-888.2	-187.4	886.2	843.9	42.31	20.949		
7,100.0	6,985.2	7,097.7	6,987.2	23.0	22.4	131.44	-888.2	-187.4	886.2	843.7	42.59	20.808		
7,200.0	7,085.2	7,197.7	7,087.2	23.1	22.6	131.44	-888.2	-187.4	886.2	843.4	42.88	20.668		
7,300.0	7,185.2	7,297.7	7,187.2	23.2	22.7	131.44	-888.2	-187.4	886.2	843.1	43.17	20.528		
7,400.0	7,285.2	7,397.7	7,287.2	23.4	22.8	131.44	-888.2	-187.4	886.2	842.8	43.47	20.389		
7,500.0	7,385.2	7,497.7	7,387.2	23.5	23.0	131.44	-888.2	-187.4	886.2	842.5	43.76	20.250		
7,600.0	7,485.2	7,597.7	7,487.2	23.7	23.1	131.44	-888.2	-187.4	886.2	842.2	44.06	20.113		
7,700.0	7,585.2	7,697.7	7,587.2	23.8	23.2	131.44	-888.2	-187.4	886.2	841.9	44.37	19.976		
7,800.0	7,685.2	7,797.7	7,687.2	24.0	23.4	131.44	-888.2	-187.4	886.2	841.6	44.67	19.839		
7,900.0	7,785.2	7,897.7	7,787.2	24.1	23.5	131.44	-888.2	-187.4	886.2	841.3	44.98	19.704		
8,000.0	7,885.2	7,997.7	7,887.2	24.3	23.7	131.44	-888.2	-187.4	886.2	841.0	45.29	19.569		
8,100.0	7,985.2	8,097.7	7,987.2	24.4	23.8	131.44	-888.2	-187.4	886.2	840.6	45.60	19.435		
8,200.0	8,085.2	8,197.7	8,087.2	24.6	24.0	131.44	-888.2	-187.4	886.2	840.3	45.91	19.302		
8,274.8	8,160.0	8,272.5	8,162.0	24.7	24.1	131.44	-888.2	-187.4	886.2	840.1	46.15	19.203		

Company:	Synergy Resources	Local Co-ordinate Reference:	Well SRC Pratt 32-29D
Project:	SEC.29-T1N-R68W	TVD Reference:	WELL @ 5222.0ft (Original Well Elev)
Reference Site:	SRC Pratt 41-29D Pad Sec.29-T1N-R68W	MD Reference:	WELL @ 5222.0ft (Original Well Elev)
Site Error:	0.0ft	North Reference:	True
Reference Well:	SRC Pratt 32-29D	Survey Calculation Method:	Minimum Curvature
Well Error:	0.0ft	Output errors are at	2.00 sigma
Reference Wellbore	Wellbore #1	Database:	Landmark
Reference Design:	Plan #1 (3-01-11)	Offset TVD Reference:	Offset Datum

Reference Depths are relative to WELL @ 5222.0ft (Original Well Elev) Coordinates are relative to: SRC Pratt 32-29D
 Offset Depths are relative to Offset Datum Coordinate System is US State Plane 1983, Colorado Northern Zone
 Central Meridian is -105.500000 ° Grid Convergence at Surface is: 0.31°



Company: Synergy Resources
Project: SEC.29-T1N-R68W
Reference Site: SRC Pratt 41-29D Pad Sec.29-T1N-R68W
Site Error: 0.0ft
Reference Well: SRC Pratt 32-29D
Well Error: 0.0ft
Reference Wellbore: Wellbore #1
Reference Design: Plan #1 (3-01-11)

Local Co-ordinate Reference: Well SRC Pratt 32-29D
TVD Reference: WELL @ 5222.0ft (Original Well Elev)
MD Reference: WELL @ 5222.0ft (Original Well Elev)
North Reference: True
Survey Calculation Method: Minimum Curvature
Output errors are at 2.00 sigma
Database: Landmark
Offset TVD Reference: Offset Datum

Reference Depths are relative to WELL @ 5222.0ft (Original Well Elev) Coordinates are relative to: SRC Pratt 32-29D
Offset Depths are relative to Offset Datum Coordinate System is US State Plane 1983, Colorado Northern Zone
Central Meridian is -105.500000 ° Grid Convergence at Surface is: 0.31°

