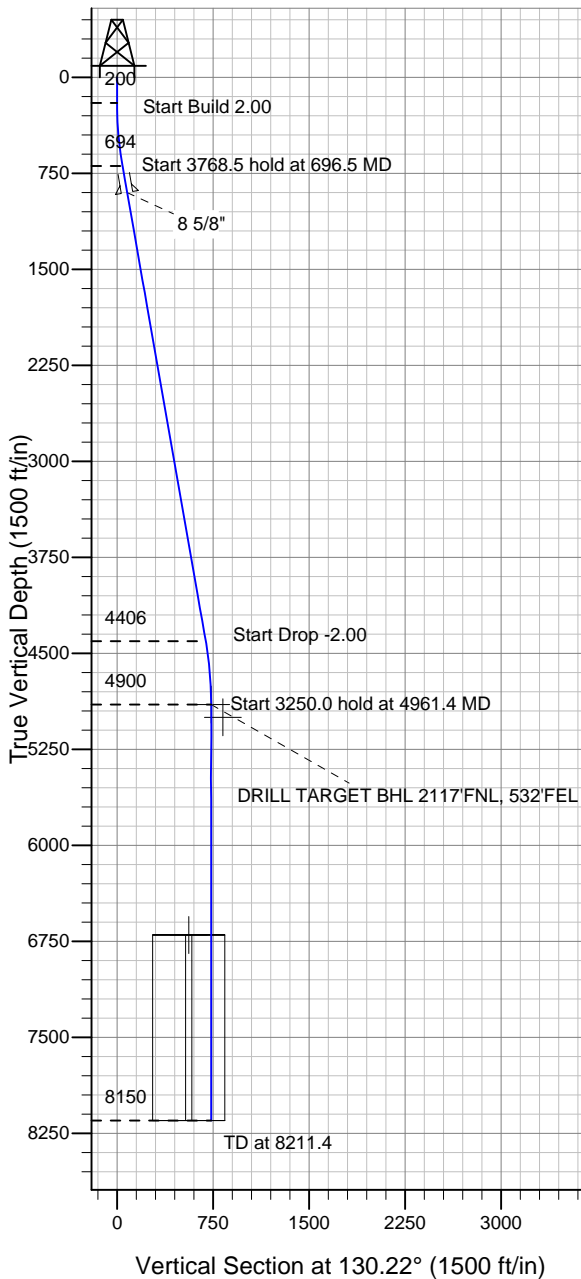


### Well Name: SRC Pratt 42-29D

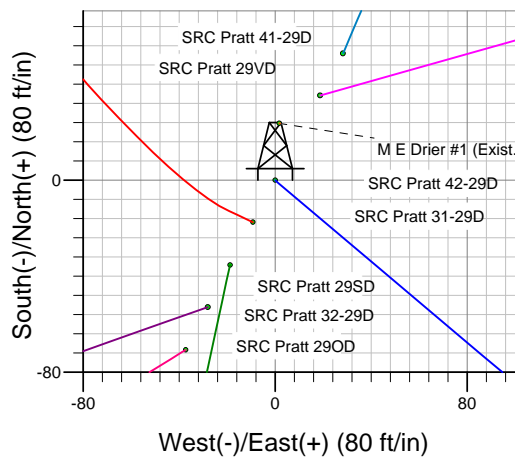
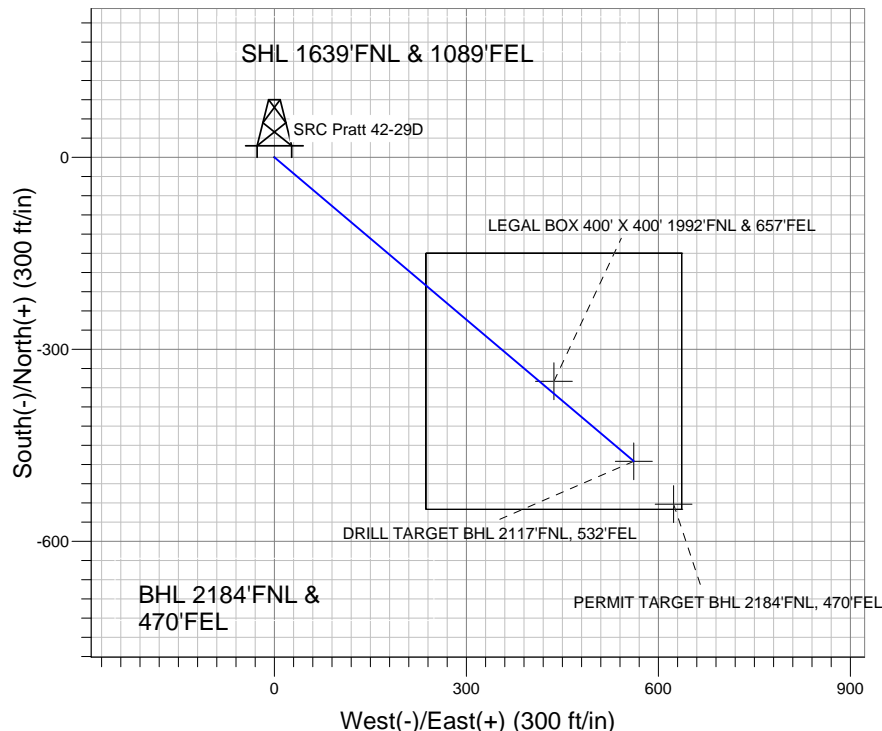
Surface Location: SRC Pratt 41-29D Pad Sec.29-T1N-R68W  
North American Datum 1983 , US State Plane 1983 , Colorado Northern Zone

Ground Elevation: 5215.0

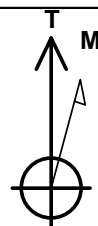
+N/-S	+E/-W	Northing	Easting	Latitude	Longitude	Slot
0.0	0.0	1252246.89	3133828.76	40.024815	-105.022126	
Original Well Elev WELL @ 5228.0ft (Original Well Elev)						



### Synergy Resources



SRC Pratt 41-29D Pad Sec.29-T1N-R68W  
SRC Pratt 42-29D  
Plan #1 (2-28-11)  
17:32, March 01 2011



Azimuths to True North  
Magnetic North: 9.01°

Magnetic Field  
Strength: 52932.9snT  
Dip Angle: 66.71°  
Date: 2/28/2011  
Model: IGRF2010

### WELLBORE TARGET DETAILS (LAT/LONG)

Name	TVD	+N/-S	+E/-W	Latitude	Longitude	Shape
DRILL TARGET BHL 2117'FNL, 532'FEL	4900.0	-475.0	561.7	40.023511	-105.020120	Point
PERMIT TARGET BHL 2184'FNL, 470'FEL	5000.0	-542.0	623.7	40.023327	-105.019899	Point
LEGAL BOX 400' X 400' 1992'FNL & 657'FEL	6700.0	-350.0	436.7	40.023854	-105.020567	Rectangle (Sides: L400.0 W400.0)

### SECTION DETAILS

Sec	MD	Inc	Azi	TVD	+N/-S	+E/-W	DLeg	TFace	VSec	Target
1	0.0	0.00	0.00	0.0	0.0	0.0	0.00	0.00	0.0	
2	200.0	0.00	0.00	200.0	0.0	0.0	0.00	0.00	0.0	
3	696.5	9.93	130.22	694.0	-27.7	32.8	2.00	130.22	42.9	
4	4465.0	9.93	130.22	4406.0	-447.3	528.9	0.00	0.00	692.7	
5	4961.4	0.00	0.00	4900.0	-475.0	561.7	2.00	180.00	735.6	DRILL TARGET BHL 2117'FNL, 532'FEL
6	8211.4	0.00	0.00	8150.0	-475.0	561.7	0.00	0.00	735.6	



## **Directional**

### **Synergy Resources**

**SEC.29-T1N-R68W**

**SRC Pratt 41-29D Pad Sec.29-T1N-R68W**

**SRC Pratt 42-29D**

**Wellbore #1**

**Plan: Plan #1 (2-28-11)**

### **Standard Planning Report**

**01 March, 2011**

Plan Sections										
Measured Depth (ft)	Inclination (°)	Azimuth (°)	Vertical Depth (ft)	+N/-S (ft)	+E/-W (ft)	Dogleg Rate (°/100ft)	Build Rate (°/100ft)	Turn Rate (°/100ft)	TFO (°)	Target
0.0	0.00	0.00	0.0	0.0	0.0	0.00	0.00	0.00	0.00	
200.0	0.00	0.00	200.0	0.0	0.0	0.00	0.00	0.00	0.00	
696.5	9.93	130.22	694.0	-27.7	32.8	2.00	2.00	0.00	130.22	
4,465.0	9.93	130.22	4,406.0	-447.3	528.9	0.00	0.00	0.00	0.00	
4,961.4	0.00	0.00	4,900.0	-475.0	561.7	2.00	-2.00	0.00	180.00	DRILL TARGET BHT
8,211.4	0.00	0.00	8,150.0	-475.0	561.7	0.00	0.00	0.00	0.00	

<b>Database:</b>	Landmark	<b>Local Co-ordinate Reference:</b>	Well SRC Pratt 42-29D
<b>Company:</b>	Synergy Resources	<b>TVD Reference:</b>	WELL @ 5228.0ft (Original Well Elev)
<b>Project:</b>	SEC.29-T1N-R68W	<b>MD Reference:</b>	WELL @ 5228.0ft (Original Well Elev)
<b>Site:</b>	SRC Pratt 41-29D Pad Sec.29-T1N-R68W	<b>North Reference:</b>	True
<b>Well:</b>	SRC Pratt 42-29D	<b>Survey Calculation Method:</b>	Minimum Curvature
<b>Wellbore:</b>	Wellbore #1		
<b>Design:</b>	Plan #1 (2-28-11)		

Planned Survey									
Measured Depth (ft)	Inclination (°)	Azimuth (°)	Vertical Depth (ft)	+N/-S (ft)	+E/-W (ft)	Vertical Section (ft)	Dogleg Rate (°/100ft)	Build Rate (°/100ft)	Turn Rate (°/100ft)
0.0	0.00	0.00	0.0	0.0	0.0	0.0	0.00	0.00	0.00
40.0	0.00	0.00	40.0	0.0	0.0	0.0	0.00	0.00	0.00
80.0	0.00	0.00	80.0	0.0	0.0	0.0	0.00	0.00	0.00
120.0	0.00	0.00	120.0	0.0	0.0	0.0	0.00	0.00	0.00
160.0	0.00	0.00	160.0	0.0	0.0	0.0	0.00	0.00	0.00
200.0	0.00	0.00	200.0	0.0	0.0	0.0	0.00	0.00	0.00
240.0	0.80	130.22	240.0	-0.2	0.2	0.3	2.00	2.00	0.00
280.0	1.60	130.22	280.0	-0.7	0.9	1.1	2.00	2.00	0.00
320.0	2.40	130.22	320.0	-1.6	1.9	2.5	2.00	2.00	0.00
360.0	3.20	130.22	359.9	-2.9	3.4	4.5	2.00	2.00	0.00
400.0	4.00	130.22	399.8	-4.5	5.3	7.0	2.00	2.00	0.00
440.0	4.80	130.22	439.7	-6.5	7.7	10.0	2.00	2.00	0.00
480.0	5.60	130.22	479.6	-8.8	10.4	13.7	2.00	2.00	0.00
520.0	6.40	130.22	519.3	-11.5	13.6	17.9	2.00	2.00	0.00
560.0	7.20	130.22	559.1	-14.6	17.2	22.6	2.00	2.00	0.00
600.0	8.00	130.22	598.7	-18.0	21.3	27.9	2.00	2.00	0.00
640.0	8.80	130.22	638.3	-21.8	25.8	33.7	2.00	2.00	0.00
680.0	9.60	130.22	677.8	-25.9	30.6	40.1	2.00	2.00	0.00
696.5	9.93	130.22	694.0	-27.7	32.8	42.9	2.00	2.00	0.00
720.0	9.93	130.22	717.2	-30.3	35.9	47.0	0.00	0.00	0.00
760.0	9.93	130.22	756.6	-34.8	41.1	53.9	0.00	0.00	0.00
800.0	9.93	130.22	796.0	-39.2	46.4	60.8	0.00	0.00	0.00
840.0	9.93	130.22	835.4	-43.7	51.7	67.7	0.00	0.00	0.00
880.0	9.93	130.22	874.8	-48.1	56.9	74.6	0.00	0.00	0.00
905.6	9.93	130.22	900.0	-51.0	60.3	79.0	0.00	0.00	0.00
8 5/8"									
920.0	9.93	130.22	914.2	-52.6	62.2	81.5	0.00	0.00	0.00
960.0	9.93	130.22	953.6	-57.0	67.5	88.4	0.00	0.00	0.00
1,000.0	9.93	130.22	993.0	-61.5	72.7	95.2	0.00	0.00	0.00
1,040.0	9.93	130.22	1,032.4	-66.0	78.0	102.1	0.00	0.00	0.00
1,080.0	9.93	130.22	1,071.8	-70.4	83.3	109.0	0.00	0.00	0.00
1,120.0	9.93	130.22	1,111.2	-74.9	88.5	115.9	0.00	0.00	0.00
1,160.0	9.93	130.22	1,150.6	-79.3	93.8	122.8	0.00	0.00	0.00
1,200.0	9.93	130.22	1,190.0	-83.8	99.1	129.7	0.00	0.00	0.00
1,240.0	9.93	130.22	1,229.4	-88.2	104.3	136.6	0.00	0.00	0.00
1,280.0	9.93	130.22	1,268.8	-92.7	109.6	143.5	0.00	0.00	0.00
1,320.0	9.93	130.22	1,308.2	-97.1	114.9	150.4	0.00	0.00	0.00
1,360.0	9.93	130.22	1,347.6	-101.6	120.1	157.3	0.00	0.00	0.00
1,400.0	9.93	130.22	1,387.0	-106.0	125.4	164.2	0.00	0.00	0.00
1,440.0	9.93	130.22	1,426.4	-110.5	130.7	171.1	0.00	0.00	0.00
1,480.0	9.93	130.22	1,465.8	-114.9	135.9	178.0	0.00	0.00	0.00
1,520.0	9.93	130.22	1,505.2	-119.4	141.2	184.9	0.00	0.00	0.00
1,560.0	9.93	130.22	1,544.6	-123.9	146.5	191.8	0.00	0.00	0.00
1,600.0	9.93	130.22	1,584.0	-128.3	151.7	198.7	0.00	0.00	0.00
1,640.0	9.93	130.22	1,623.4	-132.8	157.0	205.6	0.00	0.00	0.00
1,680.0	9.93	130.22	1,662.8	-137.2	162.3	212.5	0.00	0.00	0.00
1,720.0	9.93	130.22	1,702.2	-141.7	167.5	219.4	0.00	0.00	0.00
1,760.0	9.93	130.22	1,741.6	-146.1	172.8	226.3	0.00	0.00	0.00
1,800.0	9.93	130.22	1,781.0	-150.6	178.1	233.2	0.00	0.00	0.00
1,840.0	9.93	130.22	1,820.4	-155.0	183.3	240.1	0.00	0.00	0.00
1,880.0	9.93	130.22	1,859.8	-159.5	188.6	247.0	0.00	0.00	0.00
1,920.0	9.93	130.22	1,899.2	-163.9	193.9	253.9	0.00	0.00	0.00
1,960.0	9.93	130.22	1,938.6	-168.4	199.1	260.8	0.00	0.00	0.00
2,000.0	9.93	130.22	1,978.0	-172.8	204.4	267.7	0.00	0.00	0.00

<b>Database:</b>	Landmark	<b>Local Co-ordinate Reference:</b>	Well SRC Pratt 42-29D
<b>Company:</b>	Synergy Resources	<b>TVD Reference:</b>	WELL @ 5228.0ft (Original Well Elev)
<b>Project:</b>	SEC.29-T1N-R68W	<b>MD Reference:</b>	WELL @ 5228.0ft (Original Well Elev)
<b>Site:</b>	SRC Pratt 41-29D Pad Sec.29-T1N-R68W	<b>North Reference:</b>	True
<b>Well:</b>	SRC Pratt 42-29D	<b>Survey Calculation Method:</b>	Minimum Curvature
<b>Wellbore:</b>	Wellbore #1		
<b>Design:</b>	Plan #1 (2-28-11)		

Planned Survey									
Measured Depth (ft)	Inclination (°)	Azimuth (°)	Vertical Depth (ft)	+N/-S (ft)	+E/-W (ft)	Vertical Section (ft)	Dogleg Rate (°/100ft)	Build Rate (°/100ft)	Turn Rate (°/100ft)
2,040.0	9.93	130.22	2,017.4	-177.3	209.7	274.6	0.00	0.00	0.00
2,080.0	9.93	130.22	2,056.8	-181.7	214.9	281.5	0.00	0.00	0.00
2,120.0	9.93	130.22	2,096.2	-186.2	220.2	288.4	0.00	0.00	0.00
2,160.0	9.93	130.22	2,135.6	-190.7	225.5	295.3	0.00	0.00	0.00
2,200.0	9.93	130.22	2,175.0	-195.1	230.7	302.2	0.00	0.00	0.00
2,240.0	9.93	130.22	2,214.4	-199.6	236.0	309.1	0.00	0.00	0.00
2,280.0	9.93	130.22	2,253.8	-204.0	241.3	316.0	0.00	0.00	0.00
2,320.0	9.93	130.22	2,293.2	-208.5	246.5	322.9	0.00	0.00	0.00
2,360.0	9.93	130.22	2,332.6	-212.9	251.8	329.8	0.00	0.00	0.00
2,400.0	9.93	130.22	2,372.0	-217.4	257.1	336.6	0.00	0.00	0.00
2,440.0	9.93	130.22	2,411.4	-221.8	262.3	343.5	0.00	0.00	0.00
2,480.0	9.93	130.22	2,450.8	-226.3	267.6	350.4	0.00	0.00	0.00
2,520.0	9.93	130.22	2,490.2	-230.7	272.9	357.3	0.00	0.00	0.00
2,560.0	9.93	130.22	2,529.6	-235.2	278.1	364.2	0.00	0.00	0.00
2,600.0	9.93	130.22	2,569.0	-239.6	283.4	371.1	0.00	0.00	0.00
2,640.0	9.93	130.22	2,608.4	-244.1	288.7	378.0	0.00	0.00	0.00
2,680.0	9.93	130.22	2,647.8	-248.6	293.9	384.9	0.00	0.00	0.00
2,720.0	9.93	130.22	2,687.2	-253.0	299.2	391.8	0.00	0.00	0.00
2,760.0	9.93	130.22	2,726.6	-257.5	304.5	398.7	0.00	0.00	0.00
2,800.0	9.93	130.22	2,766.0	-261.9	309.7	405.6	0.00	0.00	0.00
2,840.0	9.93	130.22	2,805.4	-266.4	315.0	412.5	0.00	0.00	0.00
2,880.0	9.93	130.22	2,844.8	-270.8	320.3	419.4	0.00	0.00	0.00
2,920.0	9.93	130.22	2,884.2	-275.3	325.5	426.3	0.00	0.00	0.00
2,960.0	9.93	130.22	2,923.6	-279.7	330.8	433.2	0.00	0.00	0.00
3,000.0	9.93	130.22	2,963.0	-284.2	336.1	440.1	0.00	0.00	0.00
3,040.0	9.93	130.22	3,002.4	-288.6	341.3	447.0	0.00	0.00	0.00
3,080.0	9.93	130.22	3,041.8	-293.1	346.6	453.9	0.00	0.00	0.00
3,120.0	9.93	130.22	3,081.2	-297.5	351.9	460.8	0.00	0.00	0.00
3,160.0	9.93	130.22	3,120.6	-302.0	357.1	467.7	0.00	0.00	0.00
3,200.0	9.93	130.22	3,160.0	-306.4	362.4	474.6	0.00	0.00	0.00
3,240.0	9.93	130.22	3,199.4	-310.9	367.7	481.5	0.00	0.00	0.00
3,280.0	9.93	130.22	3,238.8	-315.4	372.9	488.4	0.00	0.00	0.00
3,320.0	9.93	130.22	3,278.2	-319.8	378.2	495.3	0.00	0.00	0.00
3,360.0	9.93	130.22	3,317.6	-324.3	383.5	502.2	0.00	0.00	0.00
3,400.0	9.93	130.22	3,357.0	-328.7	388.7	509.1	0.00	0.00	0.00
3,440.0	9.93	130.22	3,396.4	-333.2	394.0	516.0	0.00	0.00	0.00
3,480.0	9.93	130.22	3,435.8	-337.6	399.3	522.9	0.00	0.00	0.00
3,520.0	9.93	130.22	3,475.2	-342.1	404.5	529.8	0.00	0.00	0.00
3,560.0	9.93	130.22	3,514.6	-346.5	409.8	536.7	0.00	0.00	0.00
3,600.0	9.93	130.22	3,554.0	-351.0	415.1	543.6	0.00	0.00	0.00
3,640.0	9.93	130.22	3,593.4	-355.4	420.3	550.5	0.00	0.00	0.00
3,680.0	9.93	130.22	3,632.8	-359.9	425.6	557.4	0.00	0.00	0.00
3,720.0	9.93	130.22	3,672.2	-364.3	430.9	564.3	0.00	0.00	0.00
3,760.0	9.93	130.22	3,711.6	-368.8	436.1	571.2	0.00	0.00	0.00
3,800.0	9.93	130.22	3,751.0	-373.3	441.4	578.0	0.00	0.00	0.00
3,840.0	9.93	130.22	3,790.4	-377.7	446.7	584.9	0.00	0.00	0.00
3,880.0	9.93	130.22	3,829.8	-382.2	451.9	591.8	0.00	0.00	0.00
3,920.0	9.93	130.22	3,869.2	-386.6	457.2	598.7	0.00	0.00	0.00
3,960.0	9.93	130.22	3,908.6	-391.1	462.5	605.6	0.00	0.00	0.00
4,000.0	9.93	130.22	3,948.0	-395.5	467.7	612.5	0.00	0.00	0.00
4,040.0	9.93	130.22	3,987.4	-400.0	473.0	619.4	0.00	0.00	0.00
4,080.0	9.93	130.22	4,026.8	-404.4	478.3	626.3	0.00	0.00	0.00
4,120.0	9.93	130.22	4,066.2	-408.9	483.5	633.2	0.00	0.00	0.00
4,160.0	9.93	130.22	4,105.6	-413.3	488.8	640.1	0.00	0.00	0.00

Planned Survey									
Measured Depth (ft)	Inclination (°)	Azimuth (°)	Vertical Depth (ft)	+N-S (ft)	+E-W (ft)	Vertical Section (ft)	Dogleg Rate (°/100ft)	Build Rate (°/100ft)	Turn Rate (°/100ft)
4,200.0	9.93	130.22	4,145.0	-417.8	494.1	647.0	0.00	0.00	0.00
4,240.0	9.93	130.22	4,184.4	-422.2	499.3	653.9	0.00	0.00	0.00
4,280.0	9.93	130.22	4,223.8	-426.7	504.6	660.8	0.00	0.00	0.00
4,320.0	9.93	130.22	4,263.2	-431.2	509.9	667.7	0.00	0.00	0.00
4,360.0	9.93	130.22	4,302.6	-435.6	515.1	674.6	0.00	0.00	0.00
4,400.0	9.93	130.22	4,342.0	-440.1	520.4	681.5	0.00	0.00	0.00
4,440.0	9.93	130.22	4,381.4	-444.5	525.7	688.4	0.00	0.00	0.00
4,465.0	9.93	130.22	4,406.0	-447.3	528.9	692.7	0.00	0.00	0.00
4,480.0	9.63	130.22	4,420.9	-448.9	530.9	695.3	2.00	-2.00	0.00
4,520.0	8.83	130.22	4,460.3	-453.1	535.8	701.7	2.00	-2.00	0.00
4,560.0	8.03	130.22	4,499.9	-456.9	540.3	707.5	2.00	-2.00	0.00
4,600.0	7.23	130.22	4,539.6	-460.3	544.3	712.8	2.00	-2.00	0.00
4,640.0	6.43	130.22	4,579.3	-463.4	547.9	717.6	2.00	-2.00	0.00
4,680.0	5.63	130.22	4,619.0	-466.1	551.2	721.8	2.00	-2.00	0.00
4,720.0	4.83	130.22	4,658.9	-468.4	553.9	725.4	2.00	-2.00	0.00
4,760.0	4.03	130.22	4,698.8	-470.4	556.3	728.5	2.00	-2.00	0.00
4,800.0	3.23	130.22	4,738.7	-472.1	558.2	731.1	2.00	-2.00	0.00
4,840.0	2.43	130.22	4,778.6	-473.3	559.7	733.0	2.00	-2.00	0.00
4,880.0	1.63	130.22	4,818.6	-474.2	560.8	734.5	2.00	-2.00	0.00
4,920.0	0.83	130.22	4,858.6	-474.8	561.5	735.3	2.00	-2.00	0.00
4,960.0	0.03	130.22	4,898.6	-475.0	561.7	735.6	2.00	-2.00	0.00
4,961.4	0.00	0.00	4,900.0	-475.0	561.7	735.6	2.00	-2.00	0.00
DRILL TARGET BHL 2117'FNL, 532'FEL									
5,000.0	0.00	0.00	4,938.6	-475.0	561.7	735.6	0.00	0.00	0.00
5,040.0	0.00	0.00	4,978.6	-475.0	561.7	735.6	0.00	0.00	0.00
5,061.4	0.00	0.00	5,000.0	-475.0	561.7	735.6	0.00	0.00	0.00
PERMIT TARGET BHL 2184'FNL, 470'FEL									
5,080.0	0.00	0.00	5,018.6	-475.0	561.7	735.6	0.00	0.00	0.00
5,120.0	0.00	0.00	5,058.6	-475.0	561.7	735.6	0.00	0.00	0.00
5,160.0	0.00	0.00	5,098.6	-475.0	561.7	735.6	0.00	0.00	0.00
5,200.0	0.00	0.00	5,138.6	-475.0	561.7	735.6	0.00	0.00	0.00
5,240.0	0.00	0.00	5,178.6	-475.0	561.7	735.6	0.00	0.00	0.00
5,280.0	0.00	0.00	5,218.6	-475.0	561.7	735.6	0.00	0.00	0.00
5,320.0	0.00	0.00	5,258.6	-475.0	561.7	735.6	0.00	0.00	0.00
5,360.0	0.00	0.00	5,298.6	-475.0	561.7	735.6	0.00	0.00	0.00
5,400.0	0.00	0.00	5,338.6	-475.0	561.7	735.6	0.00	0.00	0.00
5,440.0	0.00	0.00	5,378.6	-475.0	561.7	735.6	0.00	0.00	0.00
5,480.0	0.00	0.00	5,418.6	-475.0	561.7	735.6	0.00	0.00	0.00
5,520.0	0.00	0.00	5,458.6	-475.0	561.7	735.6	0.00	0.00	0.00
5,560.0	0.00	0.00	5,498.6	-475.0	561.7	735.6	0.00	0.00	0.00
5,600.0	0.00	0.00	5,538.6	-475.0	561.7	735.6	0.00	0.00	0.00
5,640.0	0.00	0.00	5,578.6	-475.0	561.7	735.6	0.00	0.00	0.00
5,680.0	0.00	0.00	5,618.6	-475.0	561.7	735.6	0.00	0.00	0.00
5,720.0	0.00	0.00	5,658.6	-475.0	561.7	735.6	0.00	0.00	0.00
5,760.0	0.00	0.00	5,698.6	-475.0	561.7	735.6	0.00	0.00	0.00
5,800.0	0.00	0.00	5,738.6	-475.0	561.7	735.6	0.00	0.00	0.00
5,840.0	0.00	0.00	5,778.6	-475.0	561.7	735.6	0.00	0.00	0.00
5,880.0	0.00	0.00	5,818.6	-475.0	561.7	735.6	0.00	0.00	0.00
5,920.0	0.00	0.00	5,858.6	-475.0	561.7	735.6	0.00	0.00	0.00
5,960.0	0.00	0.00	5,898.6	-475.0	561.7	735.6	0.00	0.00	0.00
6,000.0	0.00	0.00	5,938.6	-475.0	561.7	735.6	0.00	0.00	0.00
6,040.0	0.00	0.00	5,978.6	-475.0	561.7	735.6	0.00	0.00	0.00
6,080.0	0.00	0.00	6,018.6	-475.0	561.7	735.6	0.00	0.00	0.00
6,120.0	0.00	0.00	6,058.6	-475.0	561.7	735.6	0.00	0.00	0.00

<b>Database:</b>	Landmark	<b>Local Co-ordinate Reference:</b>	Well SRC Pratt 42-29D
<b>Company:</b>	Synergy Resources	<b>TVD Reference:</b>	WELL @ 5228.0ft (Original Well Elev)
<b>Project:</b>	SEC.29-T1N-R68W	<b>MD Reference:</b>	WELL @ 5228.0ft (Original Well Elev)
<b>Site:</b>	SRC Pratt 41-29D Pad Sec.29-T1N-R68W	<b>North Reference:</b>	True
<b>Well:</b>	SRC Pratt 42-29D	<b>Survey Calculation Method:</b>	Minimum Curvature
<b>Wellbore:</b>	Wellbore #1		
<b>Design:</b>	Plan #1 (2-28-11)		

Planned Survey									
Measured Depth (ft)	Inclination (°)	Azimuth (°)	Vertical Depth (ft)	+N/-S (ft)	+E/-W (ft)	Vertical Section (ft)	Dogleg Rate (°/100ft)	Build Rate (°/100ft)	Turn Rate (°/100ft)
6,160.0	0.00	0.00	6,098.6	-475.0	561.7	735.6	0.00	0.00	0.00
6,200.0	0.00	0.00	6,138.6	-475.0	561.7	735.6	0.00	0.00	0.00
6,240.0	0.00	0.00	6,178.6	-475.0	561.7	735.6	0.00	0.00	0.00
6,280.0	0.00	0.00	6,218.6	-475.0	561.7	735.6	0.00	0.00	0.00
6,320.0	0.00	0.00	6,258.6	-475.0	561.7	735.6	0.00	0.00	0.00
6,360.0	0.00	0.00	6,298.6	-475.0	561.7	735.6	0.00	0.00	0.00
6,400.0	0.00	0.00	6,338.6	-475.0	561.7	735.6	0.00	0.00	0.00
6,440.0	0.00	0.00	6,378.6	-475.0	561.7	735.6	0.00	0.00	0.00
6,480.0	0.00	0.00	6,418.6	-475.0	561.7	735.6	0.00	0.00	0.00
6,520.0	0.00	0.00	6,458.6	-475.0	561.7	735.6	0.00	0.00	0.00
6,560.0	0.00	0.00	6,498.6	-475.0	561.7	735.6	0.00	0.00	0.00
6,600.0	0.00	0.00	6,538.6	-475.0	561.7	735.6	0.00	0.00	0.00
6,640.0	0.00	0.00	6,578.6	-475.0	561.7	735.6	0.00	0.00	0.00
6,680.0	0.00	0.00	6,618.6	-475.0	561.7	735.6	0.00	0.00	0.00
6,720.0	0.00	0.00	6,658.6	-475.0	561.7	735.6	0.00	0.00	0.00
6,760.0	0.00	0.00	6,698.6	-475.0	561.7	735.6	0.00	0.00	0.00
6,761.4	0.00	0.00	6,700.0	-475.0	561.7	735.6	0.00	0.00	0.00
<b>LEGAL BOX 400' X 400' 1992'FNL &amp; 657'FEL</b>									
6,800.0	0.00	0.00	6,738.6	-475.0	561.7	735.6	0.00	0.00	0.00
6,840.0	0.00	0.00	6,778.6	-475.0	561.7	735.6	0.00	0.00	0.00
6,880.0	0.00	0.00	6,818.6	-475.0	561.7	735.6	0.00	0.00	0.00
6,920.0	0.00	0.00	6,858.6	-475.0	561.7	735.6	0.00	0.00	0.00
6,960.0	0.00	0.00	6,898.6	-475.0	561.7	735.6	0.00	0.00	0.00
7,000.0	0.00	0.00	6,938.6	-475.0	561.7	735.6	0.00	0.00	0.00
7,040.0	0.00	0.00	6,978.6	-475.0	561.7	735.6	0.00	0.00	0.00
7,080.0	0.00	0.00	7,018.6	-475.0	561.7	735.6	0.00	0.00	0.00
7,120.0	0.00	0.00	7,058.6	-475.0	561.7	735.6	0.00	0.00	0.00
7,160.0	0.00	0.00	7,098.6	-475.0	561.7	735.6	0.00	0.00	0.00
7,200.0	0.00	0.00	7,138.6	-475.0	561.7	735.6	0.00	0.00	0.00
7,240.0	0.00	0.00	7,178.6	-475.0	561.7	735.6	0.00	0.00	0.00
7,280.0	0.00	0.00	7,218.6	-475.0	561.7	735.6	0.00	0.00	0.00
7,320.0	0.00	0.00	7,258.6	-475.0	561.7	735.6	0.00	0.00	0.00
7,360.0	0.00	0.00	7,298.6	-475.0	561.7	735.6	0.00	0.00	0.00
7,400.0	0.00	0.00	7,338.6	-475.0	561.7	735.6	0.00	0.00	0.00
7,440.0	0.00	0.00	7,378.6	-475.0	561.7	735.6	0.00	0.00	0.00
7,480.0	0.00	0.00	7,418.6	-475.0	561.7	735.6	0.00	0.00	0.00
7,520.0	0.00	0.00	7,458.6	-475.0	561.7	735.6	0.00	0.00	0.00
7,560.0	0.00	0.00	7,498.6	-475.0	561.7	735.6	0.00	0.00	0.00
7,600.0	0.00	0.00	7,538.6	-475.0	561.7	735.6	0.00	0.00	0.00
7,640.0	0.00	0.00	7,578.6	-475.0	561.7	735.6	0.00	0.00	0.00
7,680.0	0.00	0.00	7,618.6	-475.0	561.7	735.6	0.00	0.00	0.00
7,720.0	0.00	0.00	7,658.6	-475.0	561.7	735.6	0.00	0.00	0.00
7,760.0	0.00	0.00	7,698.6	-475.0	561.7	735.6	0.00	0.00	0.00
7,800.0	0.00	0.00	7,738.6	-475.0	561.7	735.6	0.00	0.00	0.00
7,840.0	0.00	0.00	7,778.6	-475.0	561.7	735.6	0.00	0.00	0.00
7,880.0	0.00	0.00	7,818.6	-475.0	561.7	735.6	0.00	0.00	0.00
7,920.0	0.00	0.00	7,858.6	-475.0	561.7	735.6	0.00	0.00	0.00
7,960.0	0.00	0.00	7,898.6	-475.0	561.7	735.6	0.00	0.00	0.00
8,000.0	0.00	0.00	7,938.6	-475.0	561.7	735.6	0.00	0.00	0.00
8,040.0	0.00	0.00	7,978.6	-475.0	561.7	735.6	0.00	0.00	0.00
8,080.0	0.00	0.00	8,018.6	-475.0	561.7	735.6	0.00	0.00	0.00
8,120.0	0.00	0.00	8,058.6	-475.0	561.7	735.6	0.00	0.00	0.00
8,160.0	0.00	0.00	8,098.6	-475.0	561.7	735.6	0.00	0.00	0.00

Casing Points						
Measured Depth (ft)	Vertical Depth (ft)		Name	Casing Diameter (")	Hole Diameter (")	
905.6	900.0	8 5/8"		8-5/8	12-1/4	





## **Directional**

### **Synergy Resources**

**SEC.29-T1N-R68W**

**SRC Pratt 41-29D Pad Sec.29-T1N-R68W**

**SRC Pratt 42-29D**

**Wellbore #1**

**Plan #1 (2-28-11)**

### **Anticollision Report**

**01 March, 2011**

<b>Company:</b>	Synergy Resources	<b>Local Co-ordinate Reference:</b>	Well SRC Pratt 42-29D
<b>Project:</b>	SEC.29-T1N-R68W	<b>TVD Reference:</b>	WELL @ 5228.0ft (Original Well Elev)
<b>Reference Site:</b>	SRC Pratt 41-29D Pad Sec.29-T1N-R68W	<b>MD Reference:</b>	WELL @ 5228.0ft (Original Well Elev)
<b>Site Error:</b>	0.0ft	<b>North Reference:</b>	True
<b>Reference Well:</b>	SRC Pratt 42-29D	<b>Survey Calculation Method:</b>	Minimum Curvature
<b>Well Error:</b>	0.0ft	<b>Output errors are at</b>	2.00 sigma
<b>Reference Wellbore</b>	Wellbore #1	<b>Database:</b>	Landmark
<b>Reference Design:</b>	Plan #1 (2-28-11)	<b>Offset TVD Reference:</b>	Offset Datum

<b>Reference</b>	Plan #1 (2-28-11)		
<b>Filter type:</b>	NO GLOBAL FILTER: Using user defined selection & filtering criteria		
<b>Interpolation Method:</b>	Stations	<b>Error Model:</b>	ISCWSA
<b>Depth Range:</b>	Unlimited	<b>Scan Method:</b>	Closest Approach 3D
<b>Results Limited by:</b>	Maximum center-center distance of 10,000.0ft	<b>Error Surface:</b>	Elliptical Conic
<b>Warning Levels Evaluated at:</b>	2.00 Sigma		

<b>Survey Tool Program</b>	<b>Date</b> 3/1/2011			
<b>From (ft)</b>	<b>To (ft)</b>	<b>Survey (Wellbore)</b>	<b>Tool Name</b>	<b>Description</b>
0.0	8,211.4	Plan #1 (2-28-11) (Wellbore #1)	MWD	MWD - Standard

<b>Summary</b>						
<b>Site Name</b>	<b>Reference Measured Depth (ft)</b>	<b>Offset Measured Depth (ft)</b>	<b>Distance Between Centres (ft)</b>	<b>Distance Between Ellipses (ft)</b>	<b>Separation Factor</b>	<b>Warning</b>
<b>Offset Well - Wellbore - Design</b>						
SRC Pratt 41-29D Pad Sec.29-T1N-R68W						
M E Drier #1 (Exist.) - Wellbore #1 - Design #1	200.0	265.0	23.7	23.0	30.009	CC, ES
M E Drier #1 (Exist.) - Wellbore #1 - Design #1	500.0	564.5	35.4	33.2	16.673	SF
SRC Pratt 31-29D - Wellbore #1 - Plan #1 (3-01-11)	271.5	268.5	19.7	18.8	20.883	CC
SRC Pratt 31-29D - Wellbore #1 - Plan #1 (3-01-11)	300.0	296.9	19.8	18.7	18.580	ES
SRC Pratt 31-29D - Wellbore #1 - Plan #1 (3-01-11)	400.0	396.0	23.0	21.5	15.243	SF

<b>Offset Design</b>	SRC Pratt 41-29D Pad Sec.29-T1N-R68W - M E Drier #1 (Exist.) - Wellbore #1 - Design #1												<b>Offset Site Error:</b>	0.0 ft
<b>Survey Program:</b>	0-MWD												<b>Offset Well Error:</b>	0.0 ft
<b>Reference</b>	<b>Offset</b>	<b>Semi Major Axis</b>			<b>Distance</b>									
<b>Measured Depth (ft)</b>	<b>Vertical Depth (ft)</b>	<b>Measured Depth (ft)</b>	<b>Vertical Depth (ft)</b>	<b>Reference (ft)</b>	<b>Offset (ft)</b>	<b>Highside Toolface (°)</b>	<b>Offset Wellbore Centre +N/-S (ft)</b>	<b>+E/-W (ft)</b>	<b>Between Centres (ft)</b>	<b>Between Ellipses (ft)</b>	<b>Minimum Separation (ft)</b>	<b>Separation Factor</b>	<b>Warning</b>	
0.0	0.0	65.0	65.0	0.0	0.1	4.06	23.7	1.7	23.7					
100.0	100.0	165.0	165.0	0.1	0.2	4.06	23.7	1.7	23.7	23.4	0.34	69.495		
200.0	200.0	265.0	265.0	0.3	0.5	4.06	23.7	1.7	23.7	23.0	0.79	30.009	CC, ES	
300.0	300.0	365.0	365.0	0.5	0.7	-129.40	23.7	1.7	24.8	23.6	1.23	20.255		
400.0	399.8	464.8	464.8	0.7	0.9	-137.52	23.7	1.7	28.4	26.8	1.66	17.078		
500.0	499.5	564.5	564.5	1.0	1.1	-147.02	23.7	1.7	35.4	33.2	2.12	16.673	SF	
600.0	598.7	663.7	663.7	1.3	1.4	-155.20	23.7	1.7	46.1	43.5	2.58	17.847		
696.5	694.0	759.0	759.0	1.6	1.6	-161.12	23.7	1.7	60.1	57.0	3.03	19.846		
700.0	697.5	762.5	762.5	1.6	1.6	-161.31	23.7	1.7	60.6	57.6	3.04	19.931		
800.0	796.0	861.0	861.0	2.0	1.8	-165.41	23.7	1.7	77.2	73.7	3.50	22.069		
900.0	894.5	959.5	959.5	2.4	2.0	-168.06	23.7	1.7	94.0	90.0	3.96	23.759		
1,000.0	993.0	1,058.0	1,058.0	2.8	2.3	-169.90	23.7	1.7	110.9	106.5	4.42	25.114		
1,100.0	1,091.5	1,156.5	1,156.5	3.2	2.5	-171.25	23.7	1.7	127.9	123.1	4.88	26.218		
1,200.0	1,190.0	1,255.0	1,255.0	3.5	2.7	-172.29	23.7	1.7	145.0	139.7	5.35	27.131		
1,300.0	1,288.5	1,353.5	1,353.5	3.9	2.9	-173.11	23.7	1.7	162.1	156.3	5.81	27.897		
1,400.0	1,387.0	1,452.0	1,452.0	4.3	3.1	-173.77	23.7	1.7	179.3	173.0	6.28	28.548		
1,500.0	1,485.5	1,550.5	1,550.5	4.7	3.4	-174.31	23.7	1.7	196.4	189.7	6.75	29.108		
1,600.0	1,584.0	1,649.0	1,649.0	5.1	3.6	-174.77	23.7	1.7	213.6	206.4	7.22	29.594		
1,700.0	1,682.5	1,747.5	1,747.5	5.5	3.8	-175.16	23.7	1.7	230.8	223.1	7.69	30.020		
1,800.0	1,781.0	1,846.0	1,846.0	5.9	4.0	-175.50	23.7	1.7	247.9	239.8	8.16	30.396		
1,900.0	1,879.5	1,944.5	1,944.5	6.3	4.2	-175.79	23.7	1.7	265.1	256.5	8.63	30.730		
2,000.0	1,978.0	2,043.0	2,043.0	6.7	4.5	-176.05	23.7	1.7	282.3	273.2	9.10	31.029		

CC - Min centre to center distance or convergent point, SF - min separation factor, ES - min ellipse separation

<b>Company:</b>	Synergy Resources	<b>Local Co-ordinate Reference:</b>	Well SRC Pratt 42-29D
<b>Project:</b>	SEC.29-T1N-R68W	<b>TVD Reference:</b>	WELL @ 5228.0ft (Original Well Elev)
<b>Reference Site:</b>	SRC Pratt 41-29D Pad Sec.29-T1N-R68W	<b>MD Reference:</b>	WELL @ 5228.0ft (Original Well Elev)
<b>Site Error:</b>	0.0ft	<b>North Reference:</b>	True
<b>Reference Well:</b>	SRC Pratt 42-29D	<b>Survey Calculation Method:</b>	Minimum Curvature
<b>Well Error:</b>	0.0ft	<b>Output errors are at</b>	2.00 sigma
<b>Reference Wellbore</b>	Wellbore #1	<b>Database:</b>	Landmark
<b>Reference Design:</b>	Plan #1 (2-28-11)	<b>Offset TVD Reference:</b>	Offset Datum

<b>Offset Design</b> SRC Pratt 41-29D Pad Sec.29-T1N-R68W - M E Drier #1 (Exist.) - Wellbore #1 - Design #1												<b>Offset Site Error:</b>	0.0ft
Survey Program: 0-MWD												<b>Offset Well Error:</b>	0.0ft
Reference		Offset		Semi Major Axis			Distance						
Measured Depth (ft)	Vertical Depth (ft)	Measured Depth (ft)	Vertical Depth (ft)	Reference (ft)	Offset (ft)	Highside Toolface (°)	Offset Wellbore Centre +N/-S (ft)	+E/-W (ft)	Between Centres (ft)	Between Ellipses (ft)	Minimum Separation (ft)	Separation Factor	Warning
2,100.0	2,076.5	2,141.5	2,141.5	7.1	4.7	-176.28	23.7	1.7	299.5	290.0	9.57	31.298	
2,200.0	2,175.0	2,240.0	2,240.0	7.6	4.9	-176.48	23.7	1.7	316.8	306.7	10.04	31.541	
2,300.0	2,273.5	2,338.5	2,338.5	8.0	5.1	-176.66	23.7	1.7	334.0	323.5	10.51	31.762	
2,400.0	2,372.0	2,437.0	2,437.0	8.4	5.4	-176.82	23.7	1.7	351.2	340.2	10.99	31.963	
2,500.0	2,470.5	2,535.5	2,535.5	8.8	5.6	-176.97	23.7	1.7	368.4	356.9	11.46	32.148	
2,600.0	2,569.0	2,634.0	2,634.0	9.2	5.8	-177.11	23.7	1.7	385.6	373.7	11.93	32.317	
2,700.0	2,667.5	2,732.5	2,732.5	9.6	6.0	-177.23	23.7	1.7	402.8	390.4	12.41	32.474	
2,800.0	2,766.0	2,831.0	2,831.0	10.0	6.2	-177.34	23.7	1.7	420.1	407.2	12.88	32.618	
2,900.0	2,864.5	2,929.5	2,929.5	10.4	6.5	-177.45	23.7	1.7	437.3	423.9	13.35	32.753	
3,000.0	2,963.0	3,028.0	3,028.0	10.8	6.7	-177.55	23.7	1.7	454.5	440.7	13.82	32.878	
3,100.0	3,061.5	3,126.5	3,126.5	11.2	6.9	-177.64	23.7	1.7	471.7	457.4	14.30	32.994	
3,200.0	3,160.0	3,225.0	3,225.0	11.6	7.1	-177.72	23.7	1.7	489.0	474.2	14.77	33.103	
3,300.0	3,258.5	3,323.5	3,323.5	12.0	7.3	-177.80	23.7	1.7	506.2	491.0	15.25	33.205	
3,400.0	3,357.0	3,422.0	3,422.0	12.4	7.6	-177.87	23.7	1.7	523.4	507.7	15.72	33.300	
3,500.0	3,455.5	3,520.5	3,520.5	12.8	7.8	-177.94	23.7	1.7	540.7	524.5	16.19	33.390	
3,600.0	3,554.0	3,619.0	3,619.0	13.2	8.0	-178.00	23.7	1.7	557.9	541.2	16.67	33.475	
3,700.0	3,652.5	3,717.5	3,717.5	13.6	8.2	-178.06	23.7	1.7	575.1	558.0	17.14	33.555	
3,800.0	3,751.0	3,816.0	3,816.0	14.0	8.5	-178.12	23.7	1.7	592.4	574.8	17.61	33.630	
3,900.0	3,849.5	3,914.5	3,914.5	14.4	8.7	-178.17	23.7	1.7	609.6	591.5	18.09	33.701	
4,000.0	3,948.0	4,013.0	4,013.0	14.8	8.9	-178.22	23.7	1.7	626.8	608.3	18.56	33.769	
4,100.0	4,046.5	4,111.5	4,111.5	15.2	9.1	-178.27	23.7	1.7	644.1	625.0	19.04	33.833	
4,200.0	4,145.0	4,210.0	4,210.0	15.6	9.3	-178.31	23.7	1.7	661.3	641.8	19.51	33.894	
4,300.0	4,243.5	4,308.5	4,308.5	16.0	9.6	-178.36	23.7	1.7	678.5	658.6	19.99	33.952	
4,400.0	4,342.0	4,407.0	4,407.0	16.4	9.8	-178.40	23.7	1.7	695.8	675.3	20.46	34.007	
4,465.0	4,406.0	4,471.0	4,471.0	16.7	9.9	-178.42	23.7	1.7	707.0	686.2	20.77	34.042	
4,500.0	4,440.6	4,505.6	4,505.6	16.8	10.0	-178.44	23.7	1.7	712.8	691.9	20.94	34.036	
4,600.0	4,539.6	4,604.6	4,604.6	17.1	10.2	-178.48	23.7	1.7	727.1	705.7	21.40	33.979	
4,700.0	4,639.0	4,704.0	4,704.0	17.3	10.4	-178.51	23.7	1.7	738.0	716.1	21.83	33.812	
4,800.0	4,738.7	4,803.7	4,803.7	17.5	10.7	-178.52	23.7	1.7	745.3	723.1	22.22	33.541	
4,900.0	4,838.6	4,903.6	4,903.6	17.6	10.9	-178.53	23.7	1.7	749.2	726.6	22.58	33.174	
4,961.4	4,900.0	4,965.0	4,965.0	17.7	11.0	-48.32	23.7	1.7	749.9	727.1	22.80	32.887	
5,000.0	4,938.6	5,003.6	5,003.6	17.7	11.1	-48.32	23.7	1.7	749.9	726.9	22.96	32.664	
5,100.0	5,038.6	5,103.6	5,103.6	17.9	11.3	-48.32	23.7	1.7	749.9	726.5	23.35	32.116	
5,200.0	5,138.6	5,203.6	5,203.6	18.0	11.6	-48.32	23.7	1.7	749.9	726.1	23.74	31.583	
5,300.0	5,238.6	5,303.6	5,303.6	18.1	11.8	-48.32	23.7	1.7	749.9	725.7	24.14	31.065	
5,400.0	5,338.6	5,403.6	5,403.6	18.2	12.0	-48.32	23.7	1.7	749.9	725.3	24.54	30.562	
5,500.0	5,438.6	5,503.6	5,503.6	18.3	12.2	-48.32	23.7	1.7	749.9	724.9	24.94	30.072	
5,600.0	5,538.6	5,603.6	5,603.6	18.5	12.5	-48.32	23.7	1.7	749.9	724.5	25.34	29.597	
5,700.0	5,638.6	5,703.6	5,703.6	18.6	12.7	-48.32	23.7	1.7	749.9	724.1	25.74	29.134	
5,800.0	5,738.6	5,803.6	5,803.6	18.7	12.9	-48.32	23.7	1.7	749.9	723.7	26.14	28.684	
5,900.0	5,838.6	5,903.6	5,903.6	18.8	13.1	-48.32	23.7	1.7	749.9	723.3	26.55	28.247	
6,000.0	5,938.6	6,003.6	6,003.6	19.0	13.4	-48.32	23.7	1.7	749.9	722.9	26.95	27.821	
6,100.0	6,038.6	6,103.6	6,103.6	19.1	13.6	-48.32	23.7	1.7	749.9	722.5	27.36	27.407	
6,200.0	6,138.6	6,203.6	6,203.6	19.2	13.8	-48.32	23.7	1.7	749.9	722.1	27.77	27.003	
6,300.0	6,238.6	6,303.6	6,303.6	19.4	14.0	-48.32	23.7	1.7	749.9	721.7	28.18	26.610	
6,400.0	6,338.6	6,403.6	6,403.6	19.5	14.3	-48.32	23.7	1.7	749.9	721.3	28.59	26.227	
6,500.0	6,438.6	6,503.6	6,503.6	19.7	14.5	-48.32	23.7	1.7	749.9	720.9	29.00	25.855	
6,600.0	6,538.6	6,603.6	6,603.6	19.8	14.7	-48.32	23.7	1.7	749.9	720.5	29.42	25.491	
6,700.0	6,638.6	6,703.6	6,703.6	19.9	14.9	-48.32	23.7	1.7	749.9	720.0	29.83	25.137	
6,800.0	6,738.6	6,803.6	6,803.6	20.1	15.2	-48.32	23.7	1.7	749.9	719.6	30.25	24.792	
6,900.0	6,838.6	6,903.6	6,903.6	20.2	15.4	-48.32	23.7	1.7	749.9	719.2	30.66	24.456	
7,000.0	6,938.6	7,003.6	7,003.6	20.4	15.6	-48.32	23.7	1.7	749.9	718.8	31.08	24.128	

CC - Min centre to center distance or convergent point, SF - min separation factor, ES - min ellipse separation

<b>Company:</b>	Synergy Resources	<b>Local Co-ordinate Reference:</b>	Well SRC Pratt 42-29D
<b>Project:</b>	SEC.29-T1N-R68W	<b>TVD Reference:</b>	WELL @ 5228.0ft (Original Well Elev)
<b>Reference Site:</b>	SRC Pratt 41-29D Pad Sec.29-T1N-R68W	<b>MD Reference:</b>	WELL @ 5228.0ft (Original Well Elev)
<b>Site Error:</b>	0.0ft	<b>North Reference:</b>	True
<b>Reference Well:</b>	SRC Pratt 42-29D	<b>Survey Calculation Method:</b>	Minimum Curvature
<b>Well Error:</b>	0.0ft	<b>Output errors are at</b>	2.00 sigma
<b>Reference Wellbore</b>	Wellbore #1	<b>Database:</b>	Landmark
<b>Reference Design:</b>	Plan #1 (2-28-11)	<b>Offset TVD Reference:</b>	Offset Datum

<b>Offset Design</b>												<b>Offset Site Error:</b>	0.0 ft
SRC Pratt 41-29D Pad Sec.29-T1N-R68W - M E Drier #1 (Exist.) - Wellbore #1 - Design #1												<b>Offset Well Error:</b>	0.0 ft
Survey Program: 0-MWD													
Reference		Offset		Semi Major Axis			Distance						
Measured Depth (ft)	Vertical Depth (ft)	Measured Depth (ft)	Vertical Depth (ft)	Reference (ft)	Offset (ft)	Highside Toolface (°)	Offset Wellbore Centre +N/-S (ft)	+E/-W (ft)	Between Centres (ft)	Between Ellipses (ft)	Minimum Separation (ft)	Separation Factor	Warning
7,100.0	7,038.6	7,103.6	7,103.6	20.5	15.8	-48.32	23.7	1.7	749.9	718.4	31.50	23.807	
7,200.0	7,138.6	7,203.6	7,203.6	20.7	16.1	-48.32	23.7	1.7	749.9	718.0	31.92	23.495	
7,300.0	7,238.6	7,303.6	7,303.6	20.8	16.3	-48.32	23.7	1.7	749.9	717.5	32.34	23.190	
7,400.0	7,338.6	7,403.6	7,403.6	21.0	16.5	-48.32	23.7	1.7	749.9	717.1	32.76	22.893	
7,500.0	7,438.6	7,503.6	7,503.6	21.1	16.7	-48.32	23.7	1.7	749.9	716.7	33.18	22.602	
7,600.0	7,538.6	7,603.6	7,603.6	21.3	17.0	-48.32	23.7	1.7	749.9	716.3	33.60	22.318	
7,700.0	7,638.6	7,703.6	7,703.6	21.5	17.2	-48.32	23.7	1.7	749.9	715.8	34.02	22.041	
7,800.0	7,738.6	7,803.6	7,803.6	21.6	17.4	-48.32	23.7	1.7	749.9	715.4	34.44	21.770	
7,900.0	7,838.6	7,903.6	7,903.6	21.8	17.6	-48.32	23.7	1.7	749.9	715.0	34.87	21.506	
8,000.0	7,938.6	8,003.6	8,003.6	21.9	17.9	-48.32	23.7	1.7	749.9	714.6	35.29	21.247	
8,100.0	8,038.6	8,103.6	8,103.6	22.1	18.1	-48.32	23.7	1.7	749.9	714.2	35.72	20.994	
8,200.0	8,138.6	8,203.6	8,203.6	22.3	18.3	-48.32	23.7	1.7	749.9	713.7	36.14	20.747	
8,211.4	8,150.0	8,215.0	8,215.0	22.3	18.3	-48.32	23.7	1.7	749.9	713.7	36.19	20.719	

<b>Company:</b>	Synergy Resources	<b>Local Co-ordinate Reference:</b>	Well SRC Pratt 42-29D
<b>Project:</b>	SEC.29-T1N-R68W	<b>TVD Reference:</b>	WELL @ 5228.0ft (Original Well Elev)
<b>Reference Site:</b>	SRC Pratt 41-29D Pad Sec.29-T1N-R68W	<b>MD Reference:</b>	WELL @ 5228.0ft (Original Well Elev)
<b>Site Error:</b>	0.0ft	<b>North Reference:</b>	True
<b>Reference Well:</b>	SRC Pratt 42-29D	<b>Survey Calculation Method:</b>	Minimum Curvature
<b>Well Error:</b>	0.0ft	<b>Output errors are at</b>	2.00 sigma
<b>Reference Wellbore</b>	Wellbore #1	<b>Database:</b>	Landmark
<b>Reference Design:</b>	Plan #1 (2-28-11)	<b>Offset TVD Reference:</b>	Offset Datum

Offset Design													Offset Site Error:	0.0ft
Survey Program: 0-MWD													Offset Well Error:	0.0ft
Reference		Offset		Semi Major Axis			Distance							Warning
Measured Depth (ft)	Vertical Depth (ft)	Measured Depth (ft)	Vertical Depth (ft)	Reference (ft)	Offset (ft)	Highside Toolface (°)	Offset Wellbore Centre +N/-S (ft)	+E/-W (ft)	Between Centres (ft)	Between Ellipses (ft)	Minimum Separation (ft)	Separation Factor		
0.0	0.0	0.0	0.0	0.0	0.0	-152.14	-17.5	-9.2	20.0					
100.0	100.0	97.0	97.0	0.1	0.1	-152.14	-17.5	-9.2	19.8	19.6	0.19	102.682		
200.0	200.0	197.0	197.0	0.3	0.3	-152.14	-17.5	-9.2	19.8	19.1	0.64	30.984		
271.5	271.5	268.5	268.5	0.5	0.5	82.56	-17.1	-10.0	19.7	18.8	0.94	20.883 CC		
300.0	300.0	296.9	296.8	0.5	0.5	87.35	-16.8	-10.7	19.8	18.7	1.06	18.580 ES		
400.0	399.8	396.0	395.8	0.7	0.8	113.40	-14.7	-15.3	23.0	21.5	1.51	15.243 SF		
500.0	499.5	494.0	493.5	1.0	1.0	137.90	-11.0	-22.8	34.9	32.9	2.01	17.350		
600.0	598.7	590.2	589.1	1.3	1.3	153.07	-4.8	-31.9	55.3	52.8	2.50	22.096		
696.5	694.0	680.7	678.5	1.6	1.6	161.72	3.6	-42.1	82.0	79.1	2.97	27.632		
700.0	697.5	683.9	681.8	1.6	1.6	161.97	3.9	-42.5	83.2	80.2	2.99	27.853		
800.0	796.0	775.2	771.6	2.0	1.9	167.47	14.9	-54.2	116.2	112.7	3.45	33.707		
900.0	894.5	864.4	858.9	2.4	2.3	171.05	28.0	-67.0	152.4	148.5	3.91	38.992		
1,000.0	993.0	951.4	943.5	2.8	2.7	173.63	43.0	-80.9	191.5	187.2	4.37	43.823		
1,100.0	1,091.5	1,038.8	1,027.8	3.2	3.1	175.63	60.1	-96.0	233.2	228.4	4.83	48.250		
1,200.0	1,190.0	1,129.2	1,114.9	3.5	3.6	177.12	78.2	-111.9	275.5	270.2	5.30	51.991		
1,300.0	1,288.5	1,219.6	1,202.1	3.9	4.0	178.21	96.3	-127.8	318.0	312.2	5.76	55.191		
1,400.0	1,387.0	1,310.0	1,289.2	4.3	4.5	179.05	114.4	-143.6	360.5	354.2	6.23	57.818		
1,500.0	1,485.5	1,400.4	1,376.4	4.7	5.0	179.71	132.5	-159.5	403.0	396.3	6.71	60.087		
1,600.0	1,584.0	1,490.8	1,463.5	5.1	5.5	-179.75	150.6	-175.4	445.6	438.4	7.18	62.022		
1,700.0	1,682.5	1,581.2	1,550.7	5.5	6.0	-179.31	168.7	-191.2	488.2	480.5	7.66	63.699		
1,800.0	1,781.0	1,671.6	1,637.8	5.9	6.5	-178.94	186.8	-207.1	530.8	522.7	8.15	65.163		
1,900.0	1,879.5	1,762.0	1,725.0	6.3	7.0	-178.62	204.9	-223.0	573.5	564.9	8.63	66.452		
2,000.0	1,978.0	1,852.4	1,812.1	6.7	7.5	-178.35	223.0	-238.8	616.1	607.0	9.12	67.592		
2,100.0	2,076.5	1,942.8	1,899.2	7.1	8.0	-178.11	241.1	-254.7	658.8	649.2	9.60	68.609		
2,200.0	2,175.0	2,033.2	1,986.4	7.6	8.5	-177.91	259.2	-270.6	701.5	691.4	10.09	69.520		
2,300.0	2,273.5	2,123.7	2,073.5	8.0	9.0	-177.72	277.3	-286.4	744.2	733.6	10.58	70.340		
2,400.0	2,372.0	2,214.1	2,160.7	8.4	9.5	-177.56	295.4	-302.3	786.9	775.8	11.07	71.083		
2,500.0	2,470.5	2,304.5	2,247.8	8.8	10.0	-177.41	313.5	-318.2	829.6	818.0	11.56	71.757		
2,600.0	2,569.0	2,394.9	2,335.0	9.2	10.5	-177.28	331.5	-334.0	872.3	860.2	12.05	72.373		
2,700.0	2,667.5	2,485.3	2,422.1	9.6	11.0	-177.16	349.6	-349.9	915.0	902.4	12.54	72.936		
2,800.0	2,766.0	2,575.7	2,509.3	10.0	11.5	-177.05	367.7	-365.8	957.7	944.6	13.04	73.454		
2,900.0	2,864.5	2,666.1	2,596.4	10.4	12.0	-176.95	385.8	-381.6	1,000.4	986.8	13.53	73.931		
3,000.0	2,963.0	2,756.5	2,683.6	10.8	12.5	-176.85	403.9	-397.5	1,043.1	1,029.1	14.03	74.372		
3,100.0	3,061.5	2,846.9	2,770.7	11.2	13.0	-176.77	422.0	-413.4	1,085.8	1,071.3	14.52	74.782		
3,200.0	3,160.0	2,937.3	2,857.8	11.6	13.5	-176.69	440.1	-429.2	1,128.5	1,113.5	15.01	75.162		
3,300.0	3,258.5	3,027.7	2,945.0	12.0	14.0	-176.62	458.2	-445.1	1,171.2	1,155.7	15.51	75.516		
3,400.0	3,357.0	3,118.1	3,032.1	12.4	14.5	-176.55	476.3	-461.0	1,213.9	1,197.9	16.01	75.847		
3,500.0	3,455.5	3,208.6	3,119.3	12.8	15.0	-176.49	494.4	-476.8	1,256.7	1,240.2	16.50	76.156		
3,600.0	3,554.0	3,299.0	3,206.4	13.2	15.5	-176.43	512.5	-492.7	1,299.4	1,282.4	17.00	76.446		
3,700.0	3,652.5	3,389.4	3,293.6	13.6	16.0	-176.37	530.6	-508.6	1,342.1	1,324.6	17.49	76.718		
3,800.0	3,751.0	3,479.8	3,380.7	14.0	16.5	-176.32	548.7	-524.4	1,384.8	1,366.8	17.99	76.974		
3,900.0	3,849.5	3,570.2	3,467.9	14.4	17.0	-176.27	566.8	-540.3	1,427.6	1,409.1	18.49	77.215		
4,000.0	3,948.0	3,660.6	3,555.0	14.8	17.5	-176.23	584.9	-556.2	1,470.3	1,451.3	18.99	77.442		
4,100.0	4,046.5	3,751.0	3,642.2	15.2	18.0	-176.18	603.0	-572.0	1,513.0	1,493.5	19.48	77.657		
4,200.0	4,145.0	3,841.4	3,729.3	15.6	18.5	-176.14	621.1	-587.9	1,555.7	1,535.7	19.98	77.860		
4,300.0	4,243.5	3,931.8	3,816.4	16.0	19.0	-176.10	639.2	-603.8	1,598.4	1,578.0	20.48	78.052		
4,400.0	4,342.0	4,022.2	3,903.6	16.4	19.5	-176.07	657.3	-619.6	1,641.2	1,620.2	20.98	78.234		
4,465.0	4,406.0	4,080.9	3,960.2	16.7	19.9	-176.04	669.1	-629.9	1,668.9	1,647.6	21.30	78.348		
4,500.0	4,440.6	4,112.7	3,990.8	16.8	20.0	-176.05	675.4	-635.5	1,683.7	1,662.2	21.52	78.252		
4,600.0	4,539.6	4,204.3	4,079.1	17.1	20.5	-176.07	693.8	-651.6	1,723.7	1,701.6	22.09	78.026		
4,700.0	4,639.0	4,297.3	4,168.8	17.3	21.1	-176.08	712.4	-667.9	1,760.6	1,737.9	22.64	77.750		
4,800.0	4,738.7	4,391.5	4,259.5	17.5	21.6	-176.07	731.2	-684.4	1,794.1	1,770.9	23.17	77.430		

CC - Min centre to center distance or convergent point, SF - min separation factor, ES - min ellipse separation

SRC Pratt 41-29D Pad Sec.29-T1N-R68W - SRC Pratt 31-29D - Wellbore #1 - Plan #1 (3-01-11)												Offset Site Error: 0.0 ft	
Survey Program: 0-MWD												Offset Well Error: 0.0 ft	
Reference		Offset		Semi Major Axis			Distance					Warning	
Measured Depth	Vertical Depth	Measured Depth	Vertical Depth	Reference	Offset	Highside Toolface	Offset Wellbore Centre		Between Centres	Between Ellipses	Minimum Separation		Separation Factor
(ft)	(ft)	(ft)	(ft)	(ft)	(ft)	(°)	+N/-S (ft)	+E/-W (ft)	(ft)	(ft)	(ft)		
4,900.0	4,838.6	4,486.8	4,351.4	17.6	22.1	-176.06	750.3	-701.2	1,824.4	1,800.7	23.67	77.071	
4,961.4	4,900.0	4,545.8	4,408.3	17.7	22.4	-45.82	762.1	-711.5	1,841.3	1,817.3	23.97	76.802	
5,000.0	4,938.6	4,583.0	4,444.1	17.7	22.7	-45.80	769.6	-718.0	1,851.5	1,827.4	24.15	76.671	
5,100.0	5,038.6	4,679.4	4,537.0	17.9	23.2	-45.73	788.9	-735.0	1,878.1	1,853.5	24.59	76.373	
5,200.0	5,138.6	4,775.8	4,630.0	18.0	23.7	-45.67	808.2	-751.9	1,904.6	1,879.6	25.03	76.080	
5,300.0	5,238.6	4,872.2	4,722.9	18.1	24.3	-45.61	827.4	-768.8	1,931.2	1,905.7	25.48	75.792	
5,400.0	5,338.6	4,968.6	4,815.8	18.2	24.8	-45.55	846.7	-785.7	1,957.7	1,931.8	25.93	75.508	
5,500.0	5,438.6	5,065.0	4,908.7	18.3	25.3	-45.49	866.0	-802.6	1,984.3	1,957.9	26.38	75.230	
5,600.0	5,538.6	5,161.3	5,001.6	18.5	25.9	-45.44	885.3	-819.5	2,010.8	1,984.0	26.83	74.956	
5,700.0	5,638.6	5,402.2	5,235.6	18.6	26.9	-45.32	928.3	-857.2	2,035.3	2,007.7	27.58	73.793	
5,800.0	5,738.6	5,745.3	5,575.2	18.7	27.8	-45.22	963.8	-888.4	2,049.1	2,020.7	28.43	72.070	
5,900.0	5,838.6	6,006.0	5,835.6	18.8	28.1	-45.21	970.5	-894.2	2,051.6	2,022.6	29.03	70.683	
6,000.0	5,938.6	6,106.0	5,935.6	19.0	28.2	-45.21	970.5	-894.2	2,051.6	2,022.2	29.38	69.834	
6,100.0	6,038.6	6,206.0	6,035.6	19.1	28.3	-45.21	970.5	-894.2	2,051.6	2,021.9	29.73	68.999	
6,200.0	6,138.6	6,306.0	6,135.6	19.2	28.4	-45.21	970.5	-894.2	2,051.6	2,021.5	30.09	68.178	
6,300.0	6,238.6	6,406.0	6,235.6	19.4	28.5	-45.21	970.5	-894.2	2,051.6	2,021.2	30.45	67.371	
6,400.0	6,338.6	6,506.0	6,335.6	19.5	28.6	-45.21	970.5	-894.2	2,051.6	2,020.8	30.82	66.578	
6,500.0	6,438.6	6,606.0	6,435.6	19.7	28.7	-45.21	970.5	-894.2	2,051.6	2,020.4	31.18	65.799	
6,600.0	6,538.6	6,706.0	6,535.6	19.8	28.8	-45.21	970.5	-894.2	2,051.6	2,020.1	31.55	65.033	
6,700.0	6,638.6	6,806.0	6,635.6	19.9	28.9	-45.21	970.5	-894.2	2,051.6	2,019.7	31.92	64.281	
6,800.0	6,738.6	6,906.0	6,735.6	20.1	29.1	-45.21	970.5	-894.2	2,051.6	2,019.3	32.29	63.541	
6,900.0	6,838.6	7,006.0	6,835.6	20.2	29.2	-45.21	970.5	-894.2	2,051.6	2,018.9	32.66	62.815	
7,000.0	6,938.6	7,106.0	6,935.6	20.4	29.3	-45.21	970.5	-894.2	2,051.6	2,018.6	33.04	62.102	
7,100.0	7,038.6	7,206.0	7,035.6	20.5	29.4	-45.21	970.5	-894.2	2,051.6	2,018.2	33.41	61.401	
7,200.0	7,138.6	7,306.0	7,135.6	20.7	29.5	-45.21	970.5	-894.2	2,051.6	2,017.8	33.79	60.713	
7,300.0	7,238.6	7,406.0	7,235.6	20.8	29.6	-45.21	970.5	-894.2	2,051.6	2,017.4	34.17	60.037	
7,400.0	7,338.6	7,506.0	7,335.6	21.0	29.7	-45.21	970.5	-894.2	2,051.6	2,017.1	34.55	59.373	
7,500.0	7,438.6	7,606.0	7,435.6	21.1	29.9	-45.21	970.5	-894.2	2,051.6	2,016.7	34.94	58.721	
7,600.0	7,538.6	7,706.0	7,535.6	21.3	30.0	-45.21	970.5	-894.2	2,051.6	2,016.3	35.32	58.081	
7,700.0	7,638.6	7,806.0	7,635.6	21.5	30.1	-45.21	970.5	-894.2	2,051.6	2,015.9	35.71	57.452	
7,800.0	7,738.6	7,906.0	7,735.6	21.6	30.2	-45.21	970.5	-894.2	2,051.6	2,015.5	36.10	56.834	
7,900.0	7,838.6	8,006.0	7,835.6	21.8	30.3	-45.21	970.5	-894.2	2,051.6	2,015.1	36.49	56.227	
8,000.0	7,938.6	8,106.0	7,935.6	21.9	30.5	-45.21	970.5	-894.2	2,051.6	2,014.7	36.88	55.631	
8,100.0	8,038.6	8,206.0	8,035.6	22.1	30.6	-45.21	970.5	-894.2	2,051.6	2,014.3	37.27	55.046	
8,200.0	8,138.6	8,306.0	8,135.6	22.3	30.7	-45.21	970.5	-894.2	2,051.6	2,013.9	37.66	54.471	
8,211.4	8,150.0	8,317.4	8,147.0	22.3	30.7	-45.21	970.5	-894.2	2,051.6	2,013.9	37.71	54.406	

<b>Company:</b>	Synergy Resources	<b>Local Co-ordinate Reference:</b>	Well SRC Pratt 42-29D
<b>Project:</b>	SEC.29-T1N-R68W	<b>TVD Reference:</b>	WELL @ 5228.0ft (Original Well Elev)
<b>Reference Site:</b>	SRC Pratt 41-29D Pad Sec.29-T1N-R68W	<b>MD Reference:</b>	WELL @ 5228.0ft (Original Well Elev)
<b>Site Error:</b>	0.0ft	<b>North Reference:</b>	True
<b>Reference Well:</b>	SRC Pratt 42-29D	<b>Survey Calculation Method:</b>	Minimum Curvature
<b>Well Error:</b>	0.0ft	<b>Output errors are at</b>	2.00 sigma
<b>Reference Wellbore</b>	Wellbore #1	<b>Database:</b>	Landmark
<b>Reference Design:</b>	Plan #1 (2-28-11)	<b>Offset TVD Reference:</b>	Offset Datum

Reference Depths are relative to WELL @ 5228.0ft (Original Well Elev) Coordinates are relative to: SRC Pratt 42-29D  
Offset Depths are relative to Offset Datum Coordinate System is US State Plane 1983, Colorado Northern Zone  
Central Meridian is -105.500000 ° Grid Convergence at Surface is: 0.31°



<b>Company:</b>	Synergy Resources	<b>Local Co-ordinate Reference:</b>	Well SRC Pratt 42-29D
<b>Project:</b>	SEC.29-T1N-R68W	<b>TVD Reference:</b>	WELL @ 5228.0ft (Original Well Elev)
<b>Reference Site:</b>	SRC Pratt 41-29D Pad Sec.29-T1N-R68W	<b>MD Reference:</b>	WELL @ 5228.0ft (Original Well Elev)
<b>Site Error:</b>	0.0ft	<b>North Reference:</b>	True
<b>Reference Well:</b>	SRC Pratt 42-29D	<b>Survey Calculation Method:</b>	Minimum Curvature
<b>Well Error:</b>	0.0ft	<b>Output errors are at</b>	2.00 sigma
<b>Reference Wellbore</b>	Wellbore #1	<b>Database:</b>	Landmark
<b>Reference Design:</b>	Plan #1 (2-28-11)	<b>Offset TVD Reference:</b>	Offset Datum

Reference Depths are relative to WELL @ 5228.0ft (Original Well Elev) Coordinates are relative to: SRC Pratt 42-29D  
Offset Depths are relative to Offset Datum Coordinate System is US State Plane 1983, Colorado Northern Zone  
Central Meridian is -105.500000 ° Grid Convergence at Surface is: 0.31°

