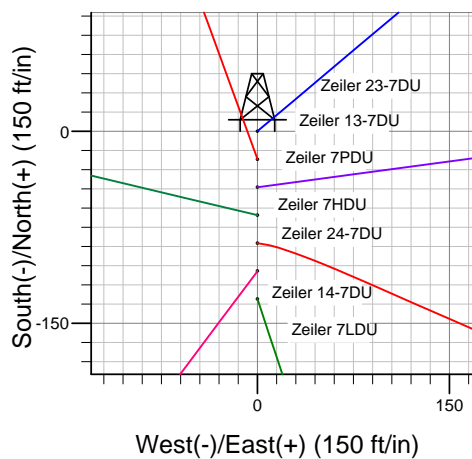
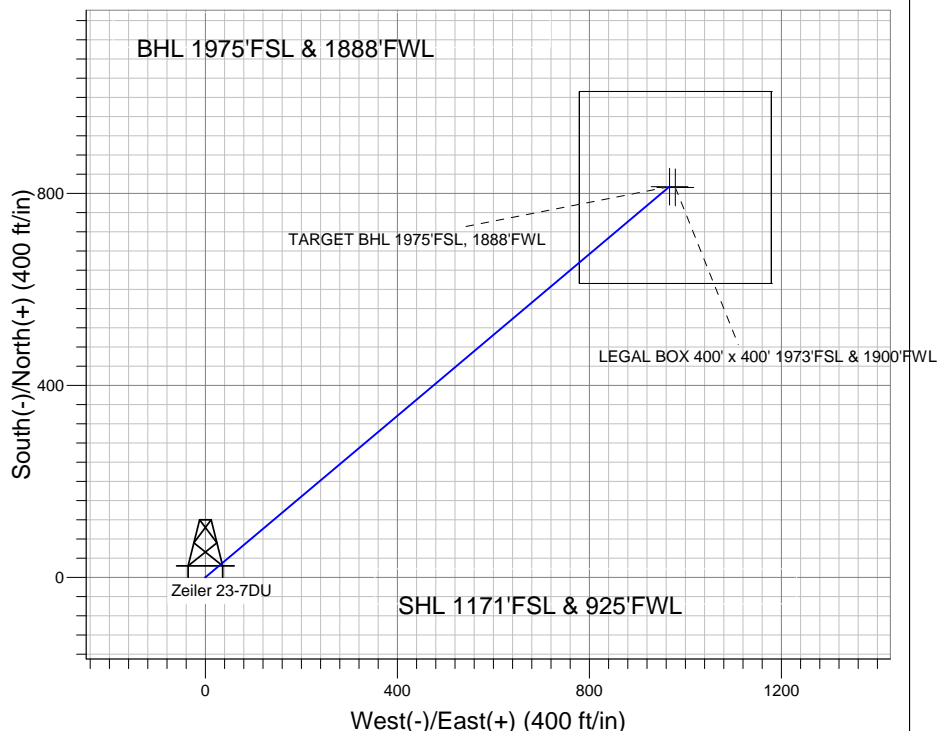
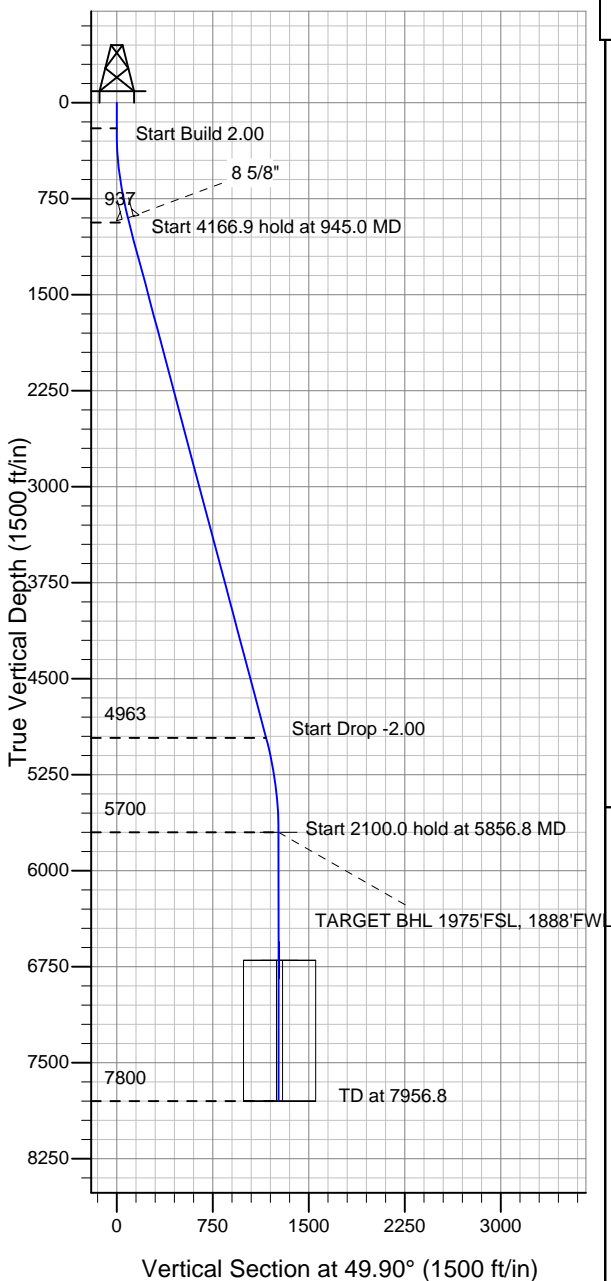


Well Name: Zeiler 23-7DU

Surface Location: Zeiler 23-7DU Pad Sec.7-T5N-R67W
 North American Datum 1983 US State Plane 1983 Colorado Northern Zone
 Ground Elevation: 4960.0
 +N/-S +E/-W Northing Easting Latitude Longitude Slot
 0.0 0.0 1392755.58 3155607.21 40° 24' 36.612 N 104° 56' 28.320 W
 Original Well Elev WELL @ 4973.0ft (Original Well Elev)

PETROLEUM DEVELOPMENT CORP Weld County CO



Zeiler 23-7DU Pad Sec.7-T5N-R67W
 Zeiler 23-7DU
 Plan #1 (2-08-11)
 13:06, February 14 2011



Azimuths to True North
 Magnetic North: 8.97°

Magnetic Field
 Strength: 53175.2snT
 Dip Angle: 67.05°
 Date: 2/8/2011
 Model: IGRF200510

WELLBORE TARGET DETAILS (LAT/LONG)

Name	TVD	+N/-S	+E/-W	Latitude	Longitude	Shape
TARGET BHL 1975'FSL, 1888'FWL	5700.0	814.2	966.9	40° 24' 44.657 N	104° 56' 15.821 W	Point
LEGAL BOX 400' x 400' 1973'FSL & 1900'FWL	6700.0	812.2	978.9	40° 24' 44.638 N	104° 56' 15.665 W	Rectangle (Sides: L400.0 W400.0)

SECTION DETAILS

Sec	MD	Inc	Azi	TVD	+N/-S	+E/-W	DLeg	TFace	VSec	Target
1	0.0	0.00	0.00	0.0	0.0	0.0	0.00	0.00	0.0	
2	200.0	0.00	0.00	200.0	0.0	0.0	0.00	0.00	0.0	
3	945.0	14.90	49.90	936.6	62.0	73.7	2.00	49.90	96.3	
4	5111.9	14.90	49.90	4963.4	752.1	893.2	0.00	0.00	1167.7	
5	5856.8	0.00	0.00	5700.0	814.2	966.9	2.00	180.00	1264.0	TARGET BHL 1975'FSL, 1888'FWL
6	7956.8	0.00	0.00	7800.0	814.2	966.9	0.00	0.00	1264.0	