

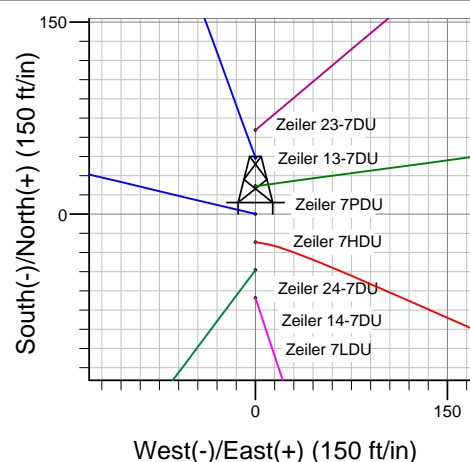
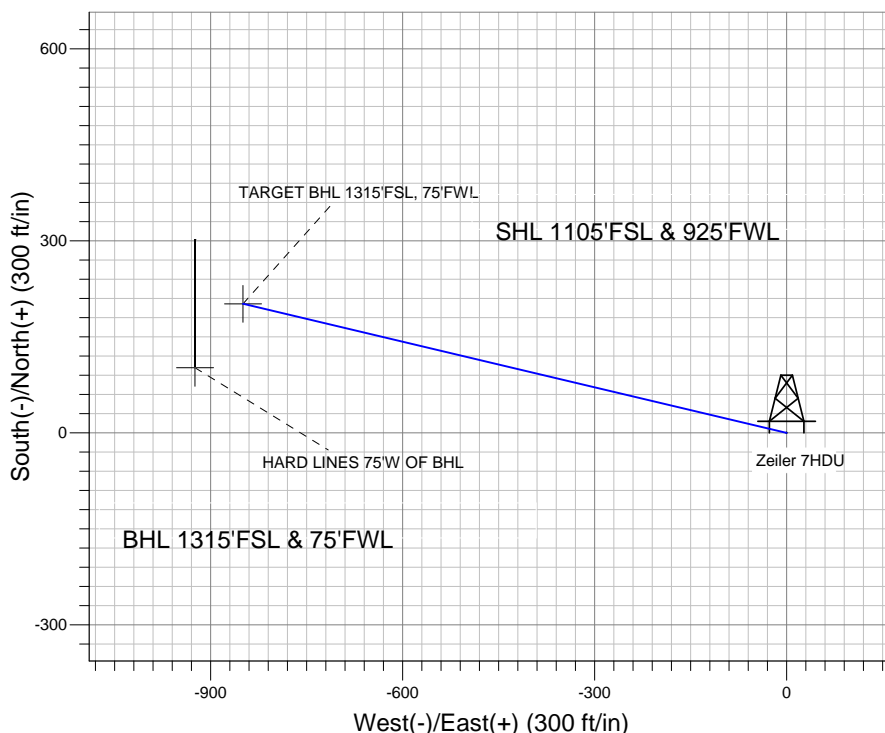
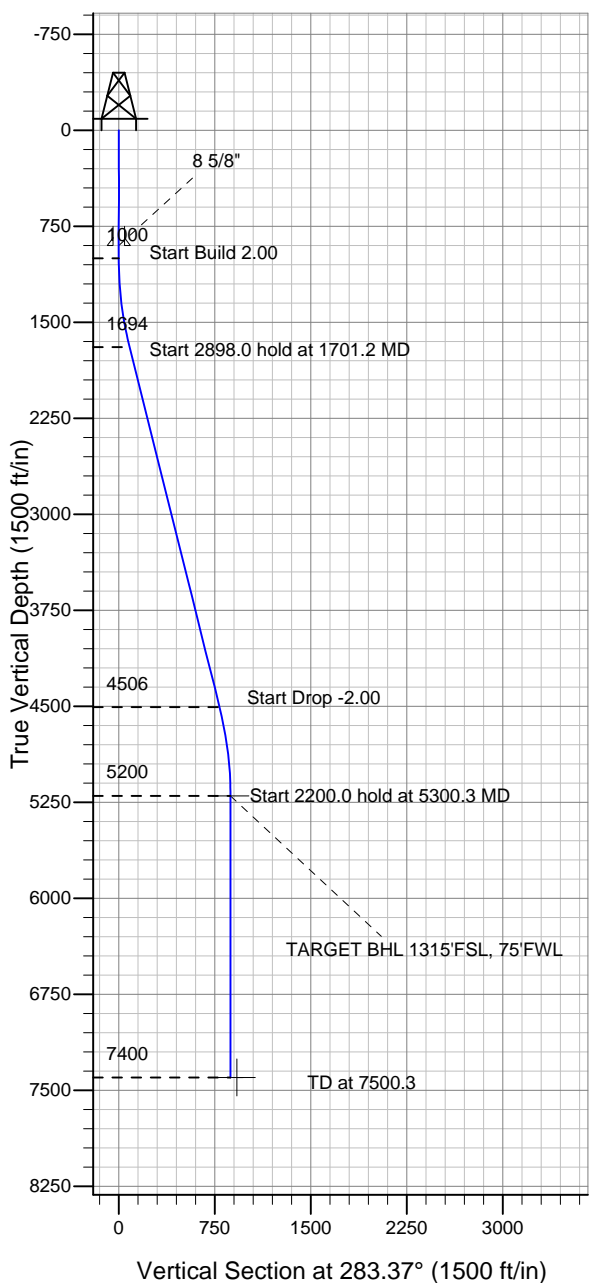
ENSIGN

Directional

Well Name: Zeiler 7HDU

Surface Location: Zeiler 23-7DU Pad Sec.7-T5N-R67W
 North American Datum 1983 US State Plane 1983 Colorado Northern Zone
 Ground Elevation: 4960.0
 +N/-S +E/-W Northing Easting Latitude Longitude Slot
 0.0 0.0 1392690.01 3155607.62 40° 24' 35.964 N 104° 56' 28.320 W
 Original Well Elev WELL @ 4973.0ft (Original Well Elev)

PETROLEUM DEVELOPMENT CORP Weld County CO



Zeiler 23-7DU Pad Sec.7-T5N-R67W
 Zeiler 7HDU
 Plan #1 (2-08-11)
 15:00, February 14 2011



Azimuths to True North
 Magnetic North: 8.96°
 Magnetic Field
 Strength: 53173.4snT
 Dip Angle: 67.05°
 Date: 2/14/2011
 Model: IGRF200510

WELLBORE TARGET DETAILS (LAT/LONG)

Name	TVD	+N/-S	+E/-W	Latitude	Longitude	Shape
TARGET BHL 1315'FSL, 75'FWL	5200.0	201.9	-849.3	40° 24' 37.959 N	104° 56' 39.300 W	Point
HARD LINES 75'W OF BHL	7400.0	101.9	-924.3	40° 24' 36.971 N	104° 56' 40.269 W	Polygon

SECTION DETAILS

Sec	MD	Inc	Azi	TVD	+N/-S	+E/-W	DLeg	TFace	VSec	Target
1	0.0	0.00	0.00	0.0	0.0	0.0	0.00	0.00	0.0	
2	1000.0	0.00	0.00	1000.0	0.0	0.0	0.00	0.00	0.0	
3	1701.2	14.02	283.37	1694.2	19.7	-83.1	2.00	283.37	85.4	
4	4599.2	14.02	283.37	4505.8	182.1	-766.3	0.00	0.00	787.6	
5	5300.3	0.00	0.00	5200.0	201.9	-849.3	2.00	180.00	873.0	TARGET BHL 1315'FSL, 75'FWL
6	7500.3	0.00	0.00	7400.0	201.9	-849.3	0.00	0.00	873.0	