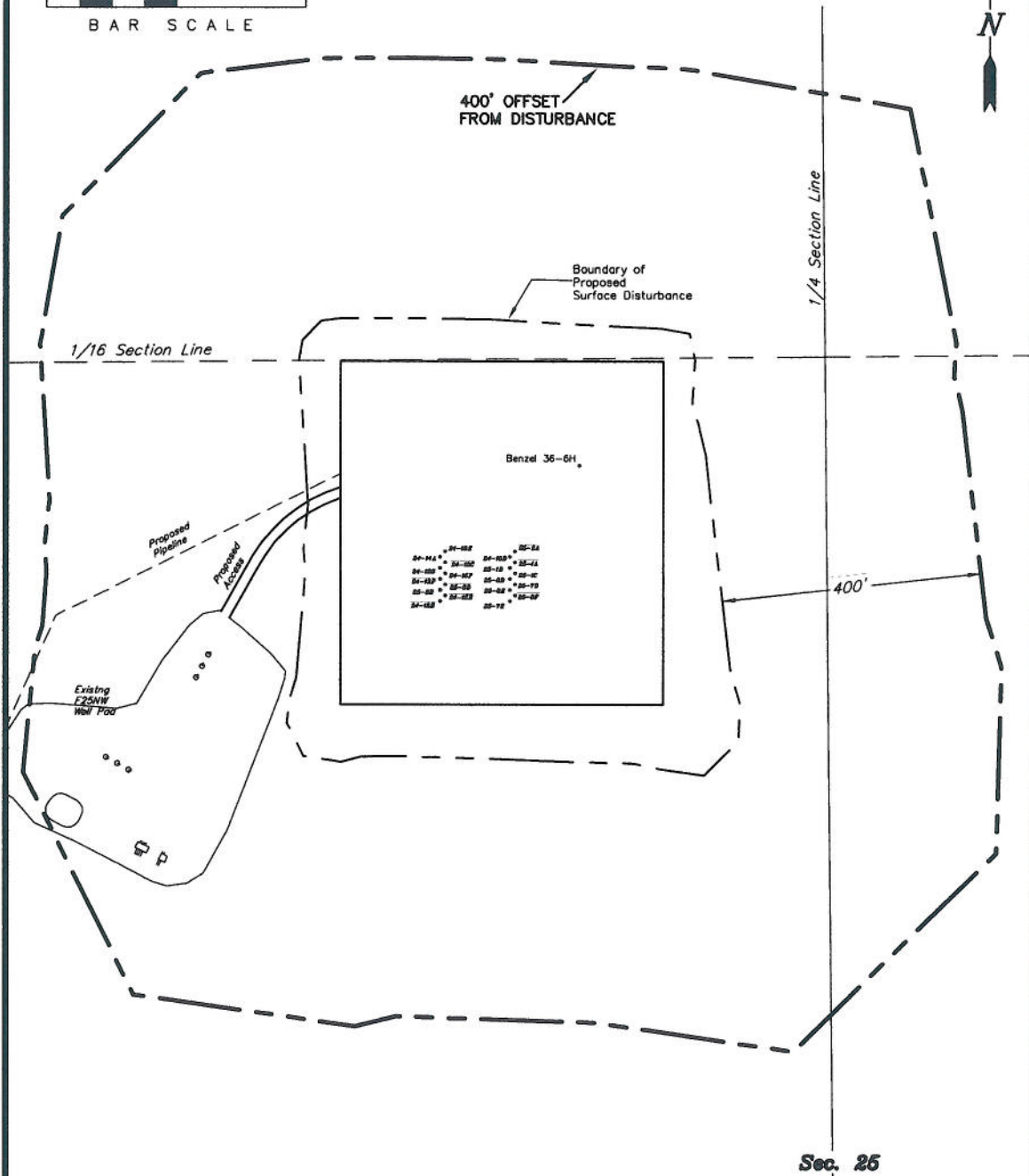
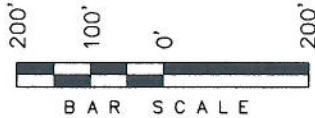


ENCANA OIL & GAS (USA) INC

LOCATION DRAWING ADDENDUM TO LEGAL PLATS FOR WELL PAD (F25NWB) EXPANSION Section 25, T6S, R93W, 6th P.M.



Distances from Well Head

WELL	BUILDING	ABOVE GROUND UTILITY	PUBLIC ROAD	RAILROAD	WELL	BUILDING	ABOVE GROUND UTILITY	PUBLIC ROAD	RAILROAD
36-6H	2,370'	2,370'	1,870'	2.74 MILES	24-10E	2,190'	2,190'	2,011'	2.74 MILES
25-2A	2,295'	2,295'	1,908'	2.74 MILES	24-14A	2,184'	2,184'	2,017'	2.74 MILES
24-16D	2,289'	2,289'	1,913'	2.74 MILES	24-10C	2,194'	2,194'	2,007'	2.74 MILES
25-1A	2,299'	2,299'	1,903'	2.74 MILES	24-13G	2,188'	2,188'	2,012'	2.74 MILES
25-1B	2,293'	2,293'	1,908'	2.74 MILES	24-15F	2,198'	2,198'	2,002'	2.74 MILES
25-1C	2,302'	2,302'	1,898'	2.74 MILES	24-13F	2,192'	2,192'	2,007'	2.74 MILES
25-8D	2,297'	2,297'	1,904'	2.74 MILES	25-3D	2,202'	2,202'	1,997'	2.74 MILES
25-7D	2,307'	2,307'	1,893'	2.74 MILES	25-3E	2,196'	2,196'	2,002'	2.74 MILES
25-8E	2,301'	2,301'	1,899'	2.74 MILES	24-15E	2,206'	2,206'	1,992'	2.74 MILES
25-8F	2,311'	2,311'	1,889'	2.74 MILES	24-13E	2,201'	2,201'	1,998'	2.74 MILES
25-7E	2,305'	2,305'	1,894'	2.74 MILES					

SURVEYED BY: C.D.S. DATE SURVEYED: 11-08-10
 DRAWN BY: L.C.S. DATE DRAWN: 02-08-11
 SCALE: 1" = 200' REVISED: L.C.S. 02-28-11

Tri State
 Land Surveying, Inc.
 180 NORTH VERNAL AVE. VERNAL, UTAH 84078

(435) 781-2501

SHEET
 2v
 OF 11