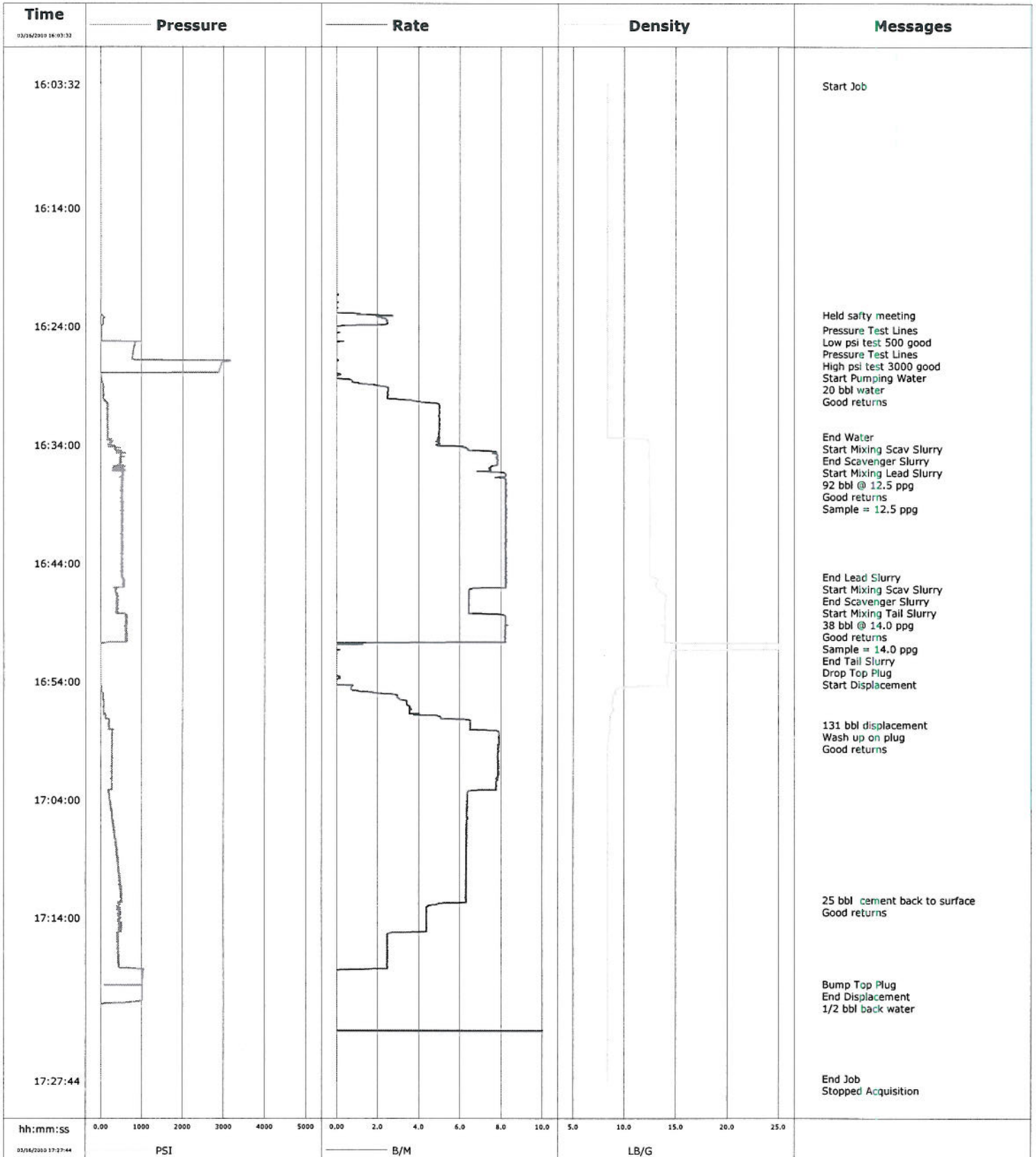
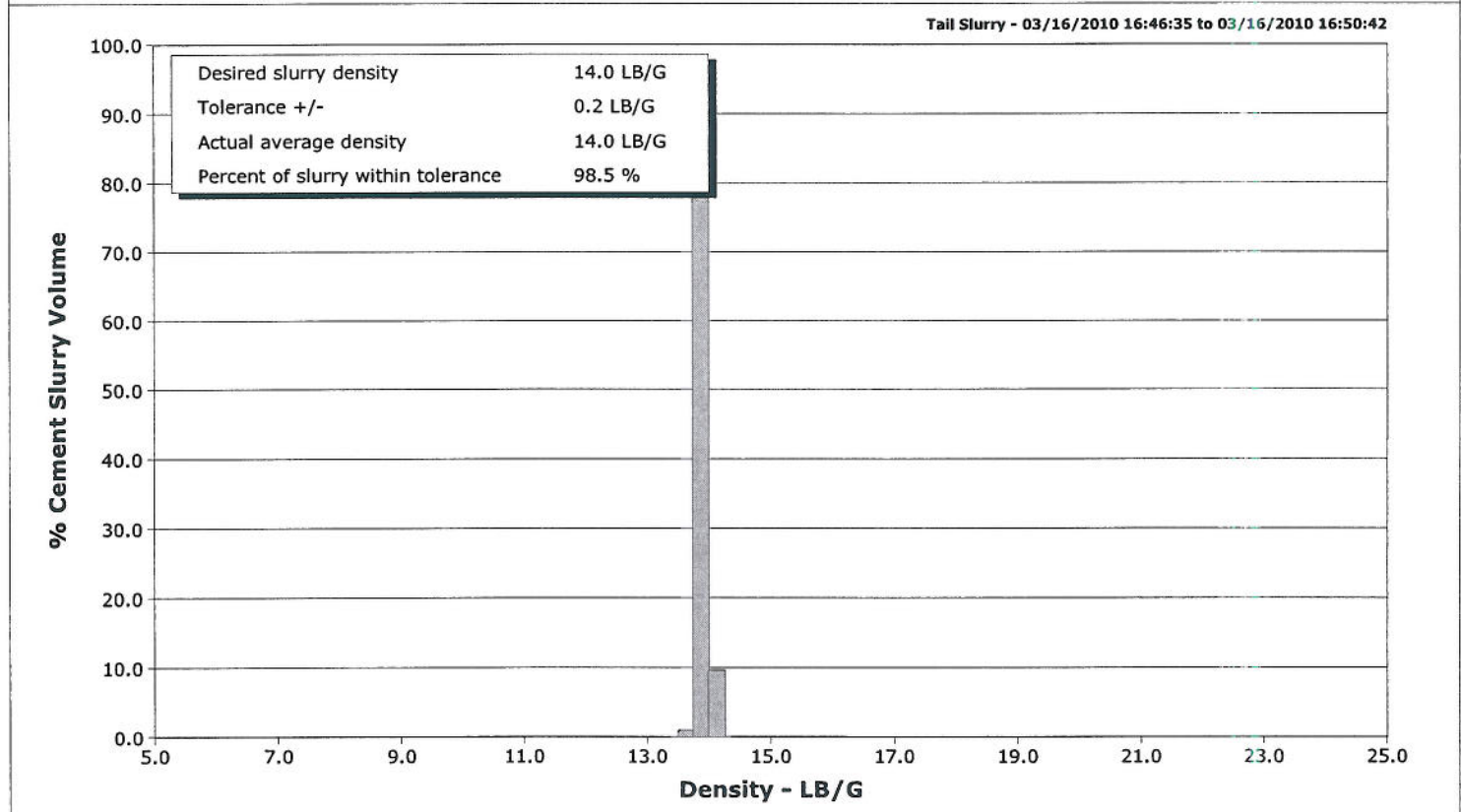
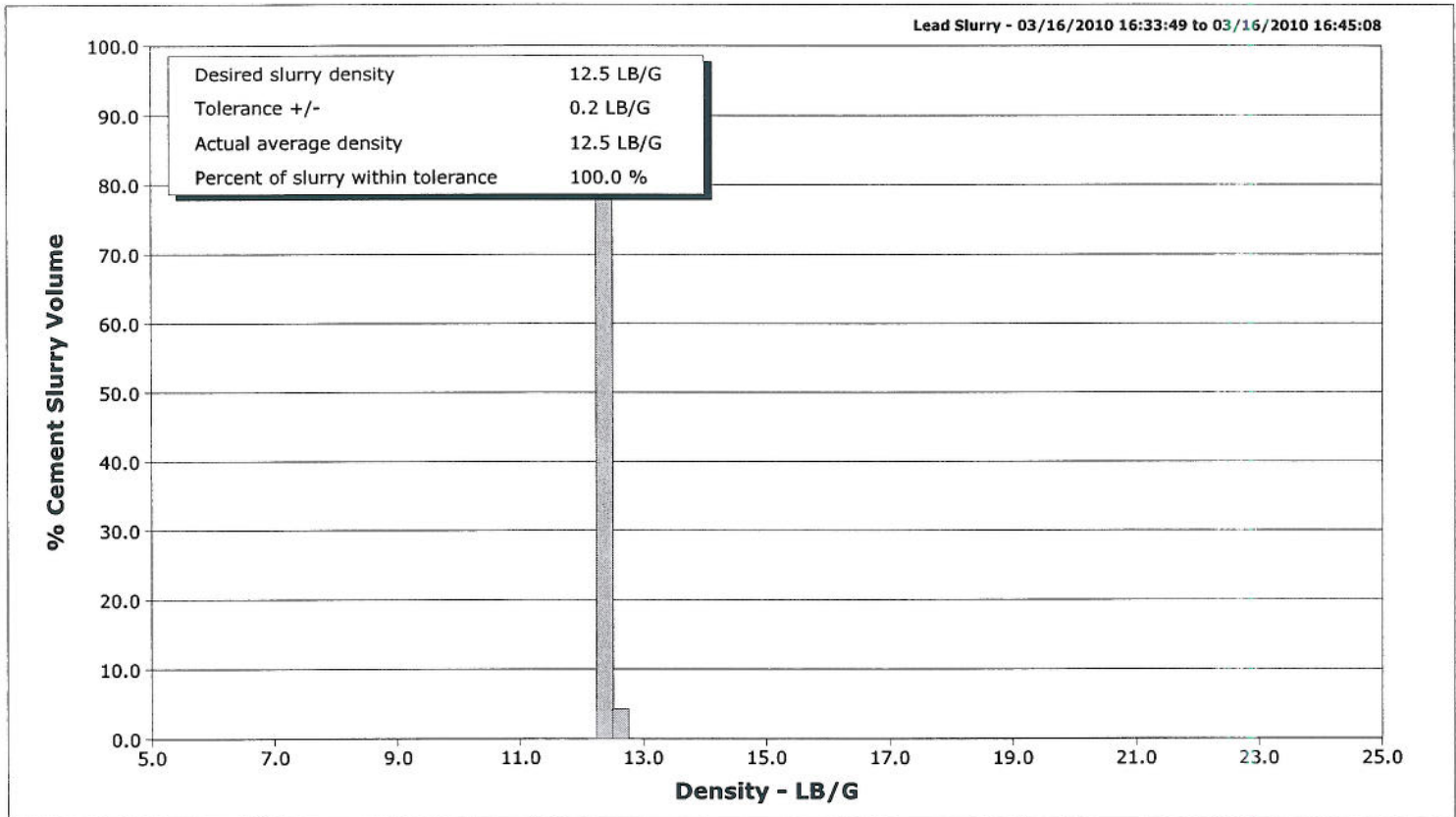


Well	EF10D-28 C28 595	Client	Encana
Field	N Parachute	SIR No.	B21J-00115
Engineer	Terry Borg	Job Type	9 5/8 Surface
Country	United States	Job Date	03-16-2010



Schlumberger Cementing Qa/Qc Density Report

Well	EF10D-28 C28 595	Client	Encana
Field	N Parachute	SIR No.	B21J-00115
Engineer	Terry Borg	Job Type	9 5/8 Surface
Country	United States	Job Date	03-16-2010



Well		Field	Job Start	Customer	Job Number	
EF10D-28 C28 595 C28		N Parachute	Mar/16/2010	Encana	B211-00115	
Date	Time 24-hr clock	Treating Pressure PSI	Flow Rate B/M	Density LB/G	Volume BBL	Message
03/16/2010	16:24:38					Pressure Test Lines
03/16/2010	16:24:38	19	0.0	8.34	2.3	
03/16/2010	16:24:47	19	0.0	8.34	2.3	
03/16/2010	16:26:27	780	0.0	8.34	2.3	
03/16/2010	16:27:05					High psi test 3000 good
03/16/2010	16:27:05	2950	0.0	8.34	2.3	
03/16/2010	16:27:57					Start Pumping Water
03/16/2010	16:27:57	23	0.0	8.34	2.3	
03/16/2010	16:27:59					20 bbl water
03/16/2010	16:27:59	7	0.1	8.34	2.3	
03/16/2010	16:28:07	3	0.1	8.34	2.3	
03/16/2010	16:29:47	65	2.5	8.34	4.8	
03/16/2010	16:30:07					Good returns
03/16/2010	16:30:07	70	2.5	8.34	5.6	
03/16/2010	16:31:27	180	5.0	8.34	11.8	
03/16/2010	16:33:07	167	5.0	8.34	20.1	
03/16/2010	16:33:17					End Water
03/16/2010	16:33:17	175	5.0	8.34	21.0	
03/16/2010	16:33:19					Start Mixing Scav Slurry
03/16/2010	16:33:19	185	5.0	8.34	21.1	
03/16/2010	16:33:48					End Scavenger Slurry
03/16/2010	16:33:48	255	4.9	12.46	23.5	
03/16/2010	16:33:49					Start Mixing Lead Slurry
03/16/2010	16:33:49	285	5.0	12.46	23.6	
03/16/2010	16:34:47	492	7.8	12.41	29.5	
03/16/2010	16:36:27	539	8.2	12.46	42.3	
03/16/2010	16:37:06					92 bbl @ 12.5 ppg
03/16/2010	16:37:06	532	8.2	12.43	47.6	
03/16/2010	16:37:07					Good returns
03/16/2010	16:37:07					Sample = 12.5 ppg
03/16/2010	16:37:07	532	8.2	12.43	47.8	
03/16/2010	16:38:07	507	8.2	12.45	56.0	
03/16/2010	16:39:47	536	8.2	12.49	69.7	
03/16/2010	16:41:27	533	8.2	12.48	83.4	
03/16/2010	16:43:07	506	8.2	12.46	97.1	
03/16/2010	16:44:47	508	8.2	12.47	110.5	
03/16/2010	16:45:08					End Lead Slurry
03/16/2010	16:45:08	508	8.2	12.59	113.4	
03/16/2010	16:45:10					Start Mixing Scav Slurry
03/16/2010	16:45:10	538	8.2	12.71	113.6	
03/16/2010	16:46:27	359	6.4	13.65	123.5	
03/16/2010	16:46:32					End Scavenger Slurry
03/16/2010	16:46:32	375	6.4	13.81	124.0	
03/16/2010	16:46:35					Start Mixing Tail Slurry
03/16/2010	16:46:35	409	6.4	13.86	124.4	
03/16/2010	16:46:47					38 bbl @ 14.0 ppg
03/16/2010	16:46:47					Good returns
03/16/2010	16:46:47	394	6.4	14.04	125.6	
03/16/2010	16:46:48					Sample = 14.0 ppg
03/16/2010	16:46:48	416	6.4	14.05	125.8	
03/16/2010	16:48:07	375	6.4	13.95	134.2	
03/16/2010	16:49:47	637	8.2	13.96	147.6	
03/16/2010	16:50:42					End Tail Slurry
03/16/2010	16:50:42	107	0.1	16.18	155.0	

Well		Field		Job Start		Customer		Job Number	
EF10D-28 C28 595 C28		N Parachute		Mar/16/2010		Encana		B21J-00115	
Date	Time 24-hr clock	Treating Pressure PSI	Flow Rate B/M	Density LB/G	Volume BBL	Message			
03/16/2010	16:50:54	10	0.0	25.00	155.1				
03/16/2010	16:50:56					Start Displacement			
03/16/2010	16:50:56	9	0.0	25.00	155.1				
03/16/2010	16:51:27	8	0.0	14.57	155.1				
03/16/2010	16:53:07	5	0.0	14.27	155.1				
03/16/2010	16:54:47	22	1.0	9.13	155.5				
03/16/2010	16:56:27	74	3.6	8.91	160.6				
03/16/2010	16:57:39					131 bbl displacement			
03/16/2010	16:57:39	201	6.5	8.57	166.9				
03/16/2010	16:57:41					Wash up on plug			
03/16/2010	16:57:41					Good returns			
03/16/2010	16:57:41	205	6.5	8.57	167.1				
03/16/2010	16:58:07	290	7.6	8.58	169.9				
03/16/2010	16:59:47	280	7.9	8.39	183.1				
03/16/2010	17:01:27	264	7.8	8.33	196.1				
03/16/2010	17:03:07	285	7.8	8.34	209.1				
03/16/2010	17:04:47	263	6.3	8.34	219.8				
03/16/2010	17:06:27	312	6.3	8.34	230.3				
03/16/2010	17:08:07	376	6.3	8.34	240.8				
03/16/2010	17:09:47	427	6.3	8.34	251.3				
03/16/2010	17:11:27	480	6.3	8.34	261.8				
03/16/2010	17:12:30					25 bbl cement back to surface			
03/16/2010	17:12:30	519	6.3	8.34	268.4				
03/16/2010	17:12:31					Good returns			
03/16/2010	17:12:31	514	6.3	8.34	268.5				
03/16/2010	17:13:07	424	4.4	8.34	271.7				
03/16/2010	17:14:47	507	4.4	8.34	278.9				
03/16/2010	17:16:27	432	2.5	8.34	283.9				
03/16/2010	17:18:07	461	2.5	8.34	288.0				
03/16/2010	17:19:34					Bump Top Plug			
03/16/2010	17:19:34	1022	0.0	8.34	288.5				
03/16/2010	17:19:36					End Displacement			
03/16/2010	17:19:36	1022	0.0	8.34	288.5				
03/16/2010	17:19:38					1/2 bbl back water			
03/16/2010	17:19:38	1022	0.0	8.34	288.5				
03/16/2010	17:19:47	1022	0.0	8.34	288.5				
03/16/2010	17:21:27	0	0.0	8.34	288.5				
03/16/2010	17:23:07	1	0.0	8.35	288.5				
03/16/2010	17:24:47	1	0.0	8.34	293.3				
03/16/2010	17:26:27	0	0.0	8.35	293.3				
03/16/2010	17:27:33					End Job			
03/16/2010	17:27:33	0	0.0	8.35	293.3				

Well EF10D-28 C28 S95 C28	Field N Parachute	Job Start Mar/16/2010	Customer Encana	Job Number B21J-00115
-------------------------------------	-----------------------------	---------------------------------	---------------------------	---------------------------------

Post Job Summary

Average Pump Rates, bbl/min				Volume of Fluid Injected, bbl			
Slurry 5.9	N2	Mud 0.0	Maximum Rate 289.1	Total Slurry 130.0	Mud 0.0	Spacer 20.0	N2
Treating Pressure Summary, psi				Breakdown Fluid			
Maximum 3161	Final 1000	Average 312	Bump Plug to	Breakdown	Type	Volume	Density
Avg. N2 Percent	Designed Slurry Volume 130.0 bbl	Displacement 131.0 bbl	Mix Water Temp 60 degF	Cement Circulated to Surface? <input checked="" type="checkbox"/>	Volume 25.0 bbl	Washed Thru Perfs <input type="checkbox"/>	To
Customer or Authorized Representative Randy Bruke		Schlumberger Supervisor Terry Borg		Circulation Lost -	Job Completed <input checked="" type="checkbox"/>	-	