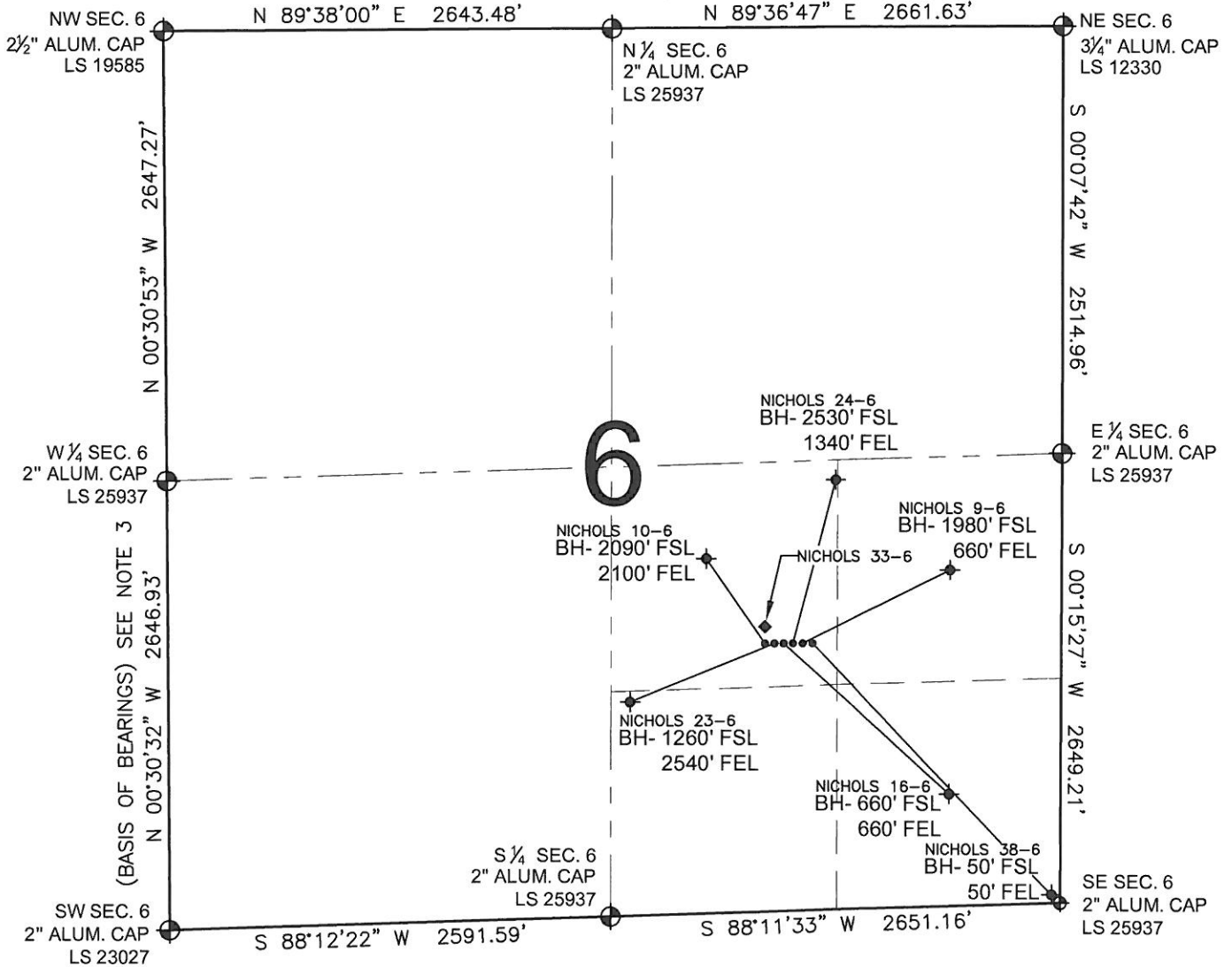


# PAD DRAWING - NICHOLS 6 PAD

SECTION 6, TOWNSHIP 2 NORTH, RANGE 65 WEST, 6TH P.M.



## LEGEND

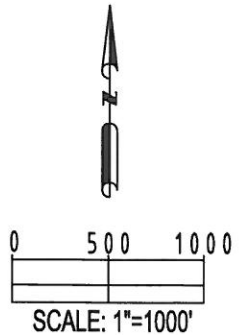
- ⊕ = EXISTING MONUMENT    ⊕ = BOTTOM HOLE    BH= BOTTOM HOLE  
 ● = PROPOSED WELL    ◆ = EXISTING WELL

## NOTES:

- THIS SURVEY WAS DONE BY GPS METHODS AND CONFORMS TO THE MINIMUM STANDARDS SET BY THE C.O.G.C.C., RULE NO. 215
- ELEVATIONS SHOWN AT THE WELL HEAD, AS WELL AS HORIZONTAL CONTROL, ARE BASED ON GPS-RTK VALUES DERIVED FROM DOING 2-HOUR STATIC GPS SESSIONS AND REDUCTIONS USING O.P.U.S. SOLUTIONS. VERTICAL = NAVD88; HORIZONTAL = NAD83/92
- THE BEARINGS SHOWN HEREON ARE BASED ON GPS OBSERVATIONS BETWEEN THE MONUMENTS SHOWN HEREON AS FOUND ON THE FIELD DATE BELOW.
- DISTANCES SHOWN ARE AT GROUND LEVEL, AS MEASURED IN THE FIELD, WITH TIES TO WELLS MEASURED AT A PERPENDICULAR TO SECTION LINES.

## NOTES:

- NICHOLS 38-6 TO BE AT 1574' FSL, 1514' FEL. BOTTOM HOLE AT 50' FSL & 50' FEL.  
 NICHOLS 9-6 TO BE AT 1574' FSL, 1530' FEL. BOTTOM HOLE AT 1980' FSL & 660' FEL.  
 NICHOLS 24-6 TO BE AT 1574' FSL, 1546' FEL. BOTTOM HOLE AT 2530' FSL & 1340' FEL.  
 NICHOLS 16-6 TO BE AT 1574' FSL, 1562' FEL. BOTTOM HOLE AT 660' FSL & 660' FEL.  
 NICHOLS 23-6 TO BE AT 1574' FSL, 1578' FEL. BOTTOM HOLE AT 1260' FSL & 2540' FEL.  
 NICHOLS 10-6 TO BE AT 1574' FSL, 1594' FEL. BOTTOM HOLE AT 2090' FSL & 2100' FEL.  
 NICHOLS 33-6 IS 1624' FSL, 1594' FEL.



REVISIONS		PREPARED BY:
INITIAL	DATE	
SMF	09-01-10	

**PFS**  
 Petroleum Field Services, LLC.  
 1801 W. 13th Ave.  
 Denver, CO 80204

KERR-MCGEE OIL & GAS ONSHORE LP

FIELD DATE: 08-17-10	PAD NAME: NICHOLS 6 PAD
DRAWING DATE: 08-23-10	SURFACE LOCATION: WELD COUNTY, COLORADO NW 1/4 SE 1/4, SEC. 6, T2N, R65W
BY: SMF	