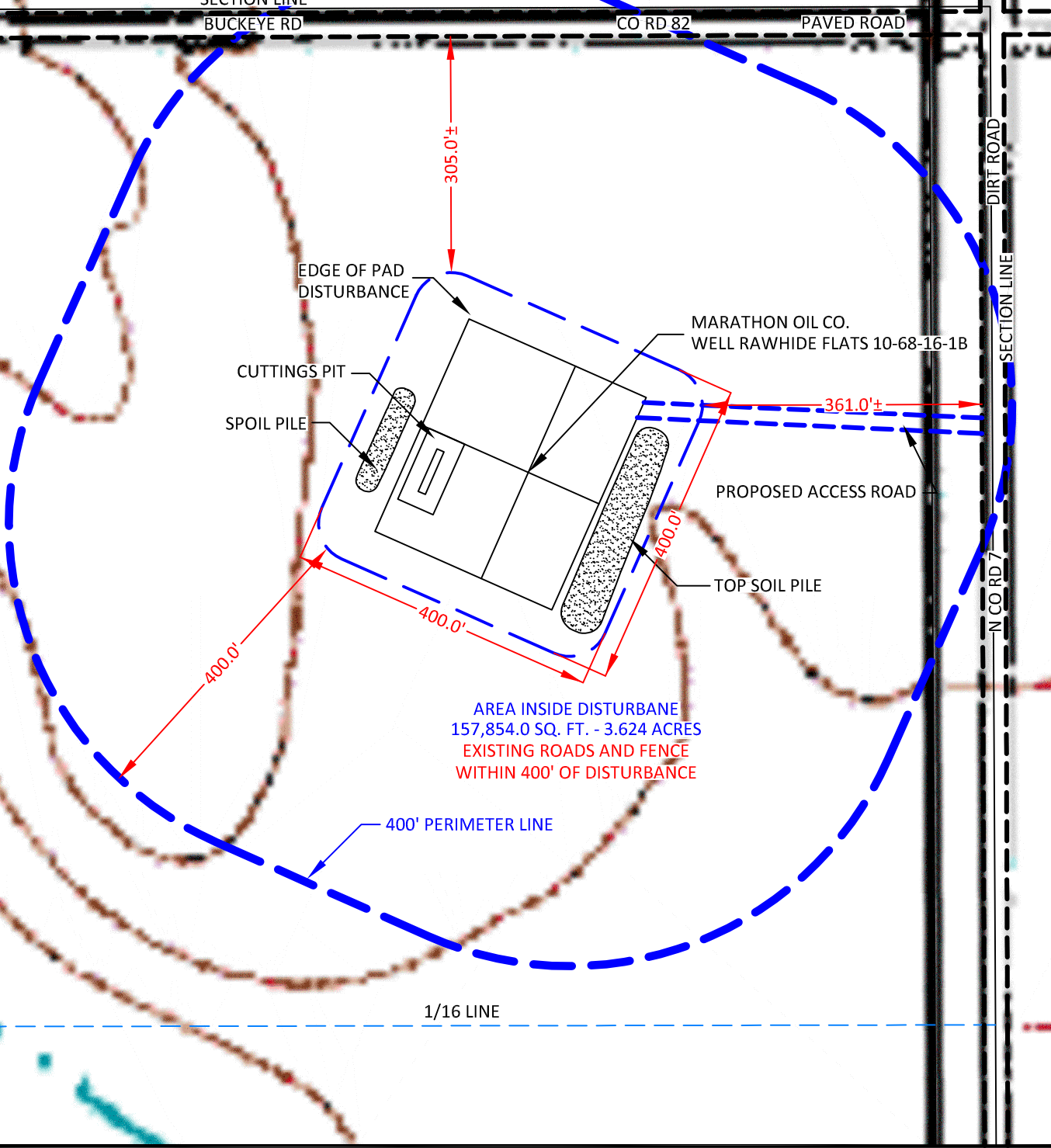


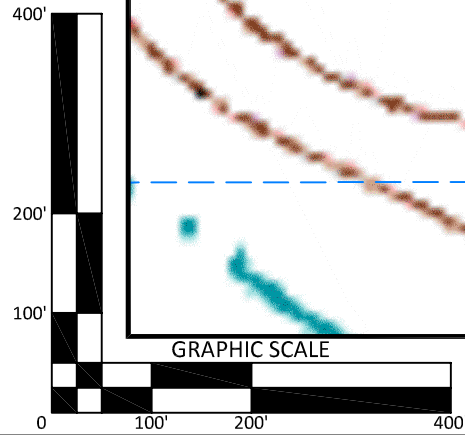
597



AREA INSIDE DISTURBANE
157,854.0 SQ. FT. - 3.624 ACRES
EXISTING ROADS AND FENCE
WITHIN 400' OF DISTURBANCE

400' PERIMETER LINE

1/16 LINE



CONFIDENTIALITY NOTES:
The information contained in this plat is legally privileged and confidential information intended only for the use of the recipients. If you are not the intended recipients, you are hereby notified that any use, dissemination, distribution or copying of this information is strictly prohibited.



WILLIAM H. SMITH & ASSOCIATES P.C.
SURVEYING CONSULTANTS
550 EAST SECOND NORTH PHONE: 307-875-3638
GREEN RIVER, WY 307-875-3639
www.whsmithpc.com

DRAWN BY: CED	CHECKED BY: WHD
PROJECT NO: 1068161B	JOB NO: 2011001
REVISIONS:	

LEGEND	
400' PERIMETER O.H.P.	
PROPOSED ACCESS	
EXISTING ROADS	
SECTION LINE	
1/16 LINE	

LOCATION:
RAWHIDE FLATS
10-68-16-1B
WITHIN THE NE/4
NE/4 SECTION 16,
T 10 N, R 68 W,
6TH PM.
LARIMER COUNTY,
COLORADO

MARATHON OIL COMPANY PO BOX 3128, HOUSTON TX, 77253 5555 SAN FELIPE, HOUSTON TX, 77056	
LOCATION DRAWING	
SCALE: 1"=200'	EXHIBIT "C"
DATE: 02/20/2011	SHEET 2 OF 11