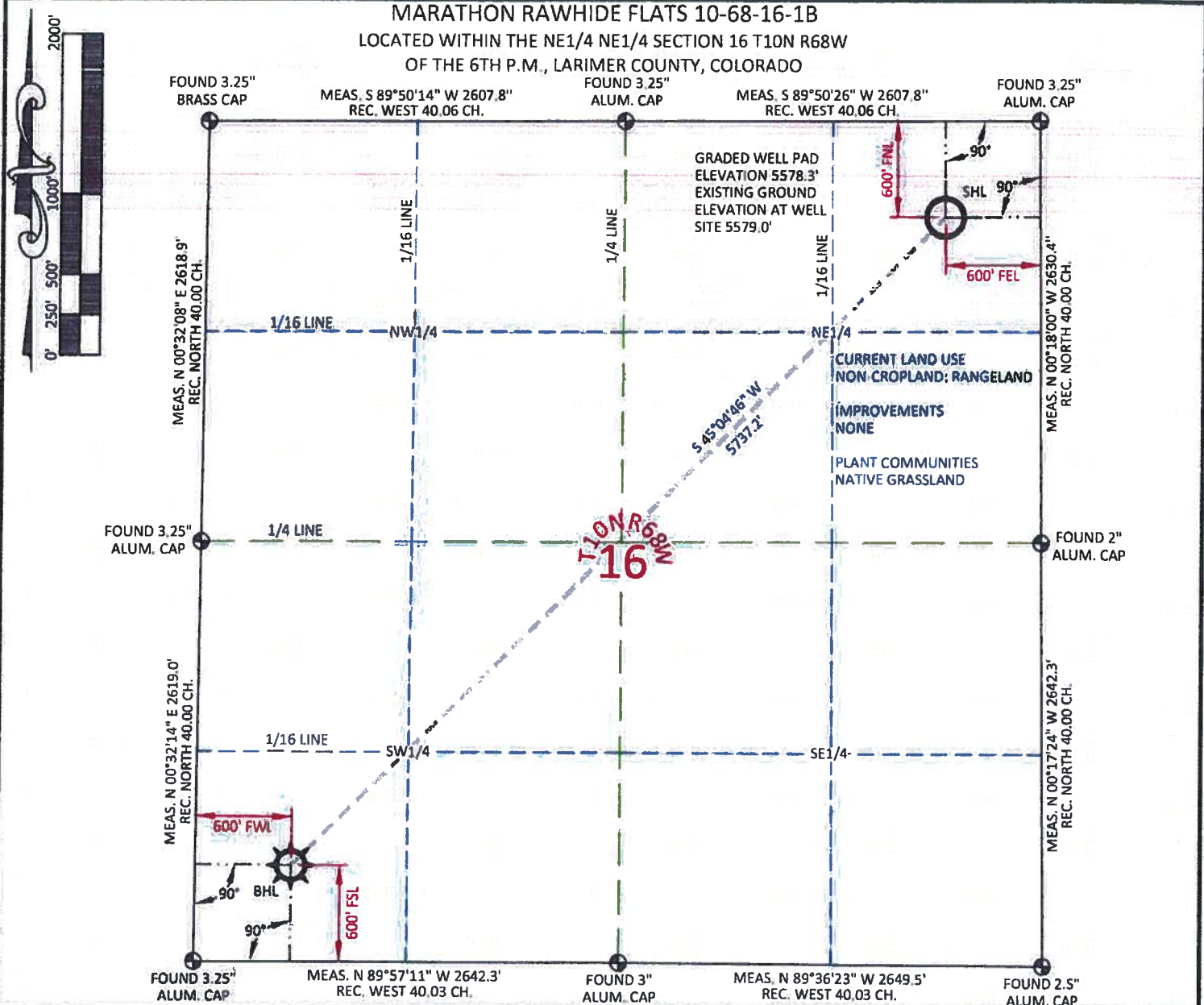


MARATHON RAWHIDE FLATS 10-68-16B
 LOCATED WITHIN THE NE1/4 NE1/4 SECTION 16 T10N R68W
 OF THE 6TH P.M., LARIMER COUNTY, COLORADO

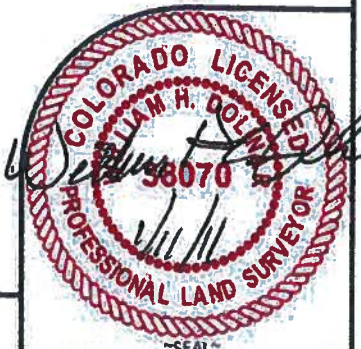


| SURFACE HOLE LOCATION | |
|------------------------------|---------------------|
| LAT. | 40.839661° |
| LONG. | 105.002416° |
| LAT. | 40.839678° |
| LONG. | 105.001888° |
| LAT. | 40°50'22.78" |
| LONG. | 105°00'08.70" |
| LAT. | 40°50'22.84" |
| LONG. | 105°00'06.80" |
| NORTH | 1549123.21 |
| EAST | 3137682.77 |
| NORTH | 549120.49 |
| EAST | 2137832.57 |
| FOOTAGE: 600' FWL - 600' FNL | |
| MEASURE DATE | INSTRUMENT OPERATOR |
| 12/15/2010 | ALEC THOMAS |

| BOTTOM HOLE LOCATION | |
|------------------------------|---------------------|
| LAT. | 40.828604° |
| LONG. | 105.017177° |
| LAT. | 40.828621° |
| LONG. | 105.016648° |
| LAT. | 40°49'42.97" |
| LONG. | 105°01'01.83" |
| LAT. | 40°49'43.03" |
| LONG. | 105°00'59.93" |
| NORTH | 1545072.03 |
| EAST | 3133620.35 |
| NORTH | 454069.38 |
| EAST | 2133770.26 |
| FOOTAGE: 600' FWL - 600' FSL | |
| MEASURE DATE | INSTRUMENT OPERATOR |
| 12/15/2010 | ALEC THOMAS |
| PDOF | SHL GRND ELEV. |
| 1.088 | 5579.0' |

I, William H. Dollnar, Professional Land Surveyor, CO. RLS # 38070 hereby certify that (in accordance with a request from Anna Walls with Marathon Oil Co, 5555 San Felipe, Houston, TX 77056) I and or personnel under my direction made a survey on the 15th day of December 2010, for the Surface Hole Location and Elevation of Marathon Oil Co. RAWHIDE FLATS 10-68-16-1B being located within the NE1/4 NE1/4 Section 16, T10N R68W and the Bottom Hole Location being located in the SW1/4 SW1/4 of Section 16, T10N, R68W, both being of the 6th P.M., Larimer County, State of Colorado.

- All bearings and distances are GRID, based on the Colorado State Plane Coordinate System, North Zone, North American Datum 1983 from GPS observations occupying a WHS control point (5/8" rebar) and having the Location and Elevation derived from an Opus Solution.
- Vertical Datum used is of NAVD 88.
- Record Bearings and Distances as shown are based on the General Land Office Survey plat approved on the 16th day of December 1872.



CONFIDENTIALITY NOTES:
 The information contained in this plat is legally privileged and confidential information intended only for the use of the recipients. If you are not the intended recipients, you are hereby notified that any use, dissemination, distribution or copying of this information is strictly prohibited.

WILLIAM H. SMITH & ASSOCIATES P.C.
 SURVEYING CONSULTANTS
 50 EAST SECOND NORTH GREEN RIVER, WY
 PHONE: 307-875-3638 307-875-3639
 www.wsmithpc.com

DRAWN BY: CED **CHECKED BY:** WHD
PROJECT NO: 1068161B **JOB NO:** 2011001

REVISIONS:

LEGEND

- FOUND CORNER
- ⊗ CALCULATED CORNER
- NOTHING FOUND

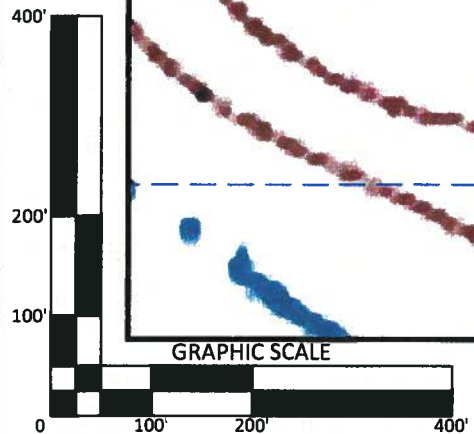
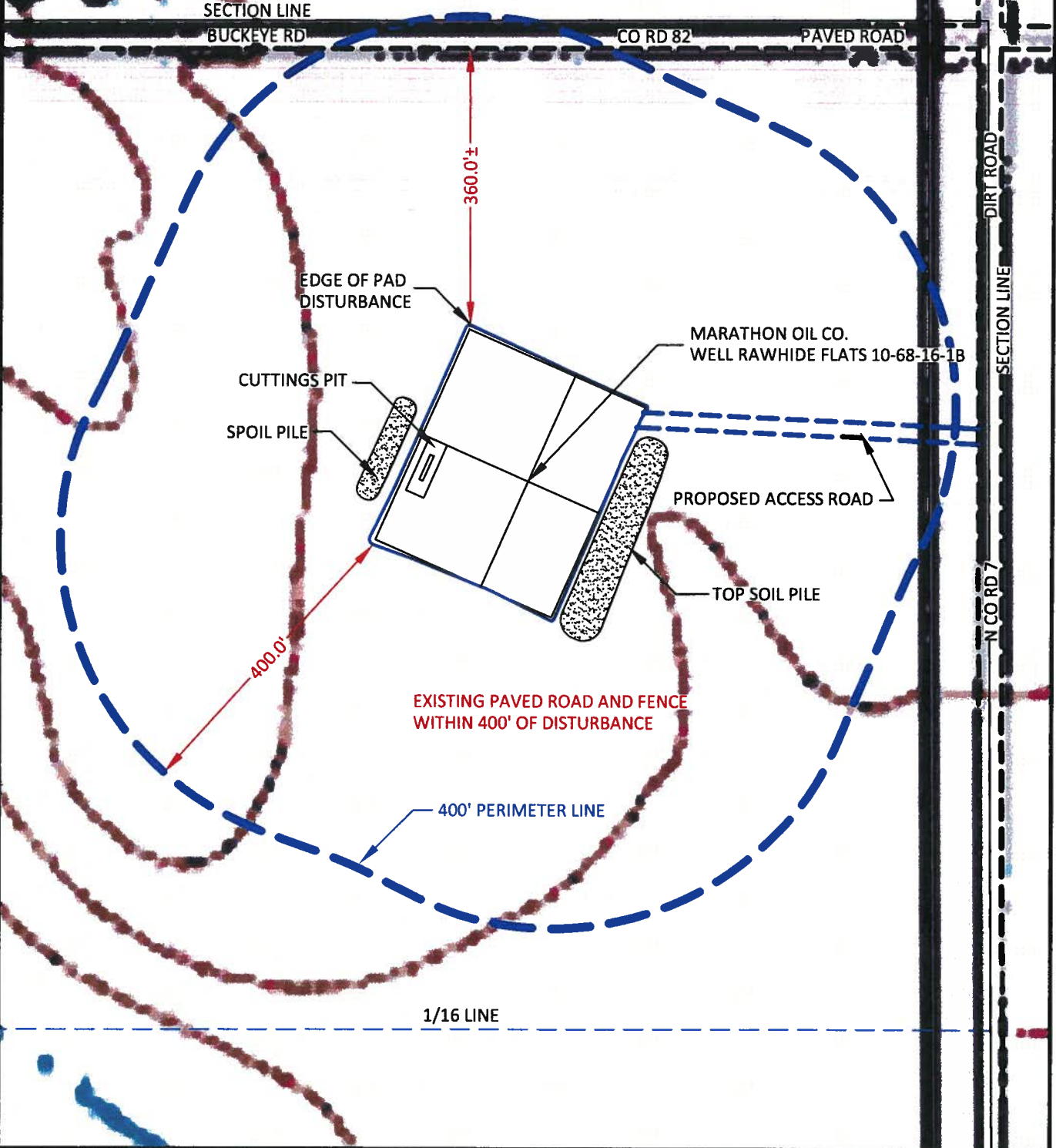
LOCATION:
 RAWHIDE FLATS 10-68-16-1B
 WITHIN THE NE/4
 NE/4 SECTION 16,
 T 10 N, R 68 W,
 6TH PM,
 LARIMER COUNTY,
 COLORADO

MARATHON OIL COMPANY
 PO BOX 3128, HOUSTON TX, 77253
 5555 SAN FELIPE, HOUSTON TX, 77056

WELL LOCATION PLAT

SCALE: 1"=1000' **EXHIBIT "A"**
DATE: 01/01/2011 **SHEET 1 OF 1**

597



CONFIDENTIALITY NOTES:
The information contained in this plat is legally privileged and confidential information intended only for the use of the recipients. If you are not the intended recipients, you are hereby notified that any use, dissemination, distribution or copying of this information is strictly prohibited.

WILLIAM H. SMITH & ASSOCIATES P.C.
SURVEYING CONSULTANTS
50 EAST SECOND NORTH GREEN RIVER, WY
PHONE: 307-875-3638
307-875-3639
www.whsmithpc.com

DRAWN BY: CED
PROJECT NO: 10681618

CHECKED BY: WHD
JOB NO: 2011001

REVISIONS:

LEGEND

400' PERIMETER O.H.P. ————

PROPOSED ACCESS ————

EXISTING ROADS ————

SECTION LINE ————

1/16 LINE ————

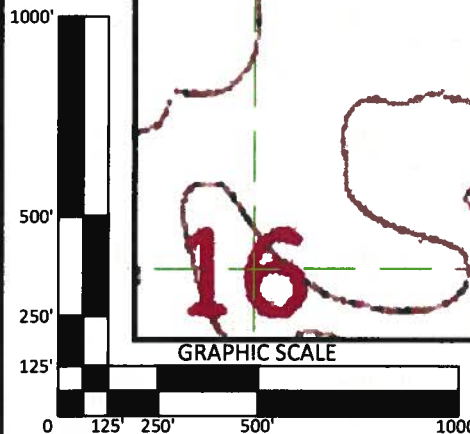
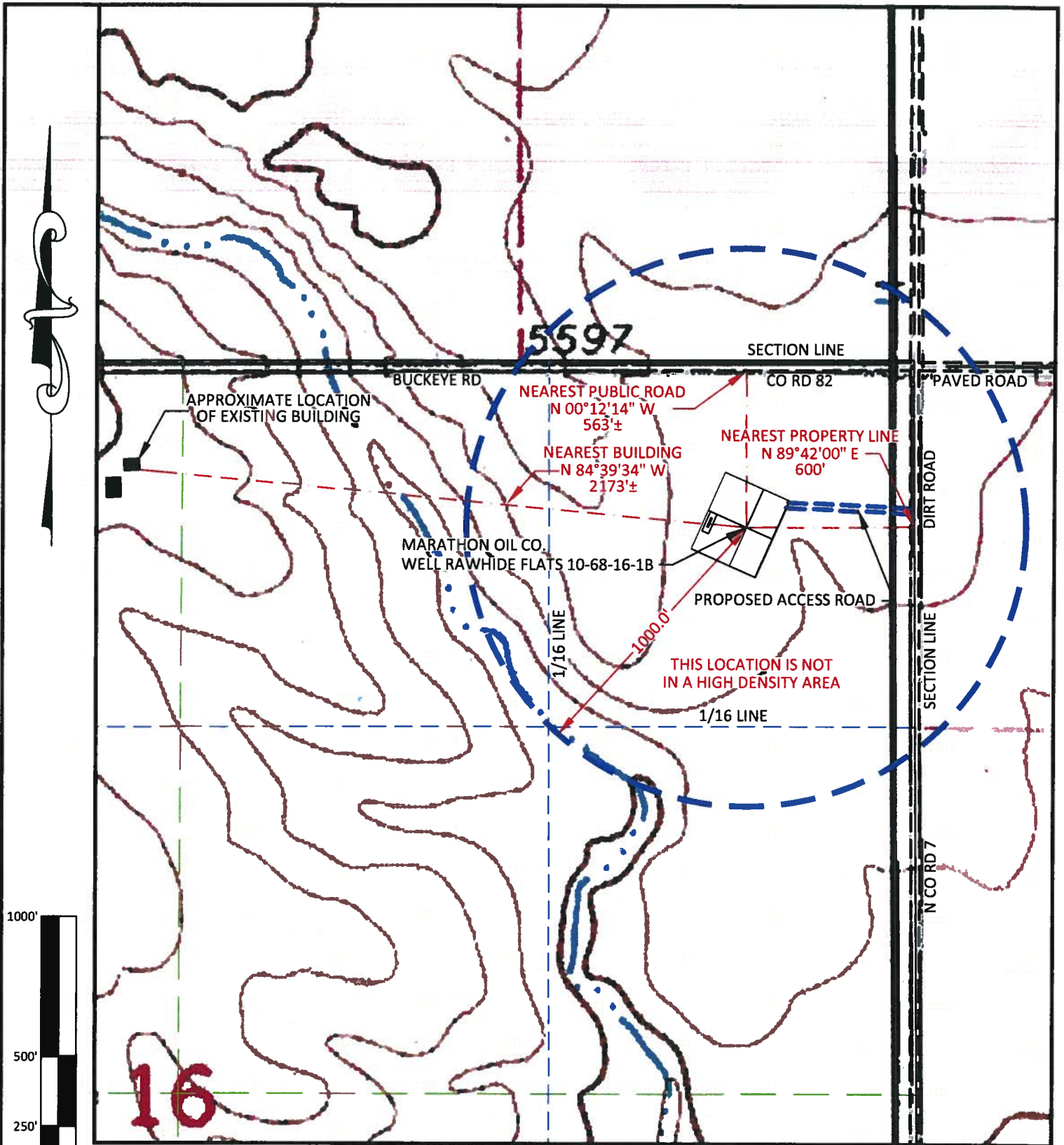
LOCATION:
RAWHIDE FLATS
10-68-16-1B
WITHIN THE NE/4
NE/4 SECTION 16,
T 10 N, R 68 W,
6TH PM.
LARIMER COUNTY,
COLORADO

MARATHON OIL COMPANY
PO BOX 3128, HOUSTON TX, 77253
5555 SAN FELIPE, HOUSTON TX, 77056

LOCATION DRAWING

SCALE: 1"=200'
DATE: 01/01/2011

EXHIBIT "C"
SHEET 2 OF 11



CONFIDENTIALITY NOTES:
 The information contained in this plat is legally privileged and confidential information intended only for the use of the recipients. If you are not the intended recipients, you are hereby notified that any use, dissemination, distribution or copying of this information is strictly prohibited.

WILLIAM H. SMITH & ASSOCIATES P.C.
 SURVEYING CONSULTANTS
 150 EAST SECOND NORTH GREEN RIVER, WY
 PHONE: 307-875-3638 307-875-3639
 www.whsmithpc.com

DRAWN BY: CED **CHECKED BY: WHD**
PROJECT NO: 1068161B **JOB NO: 2011001**

REVISIONS:

LEGEND

| | |
|---------------------|--|
| 1000' RADIUS O.H.P. | |
| PROPOSED ACCESS | |
| EXISTING 2-TRACK | |
| EXISTING ROAD | |
| SECTION LINE | |
| 1/16 LINE | |

LOCATION:
 RAWHIDE FLATS
 10-68-16-1B
 WITHIN THE NE/4
 NE/4 SECTION 16,
 T 10 N, R 68 W,
 6TH PM.
 LARIMER COUNTY,
 COLORADO

MARATHON OIL COMPANY
 PO BOX 3128, HOUSTON TX, 77253
 5555 SAN FELIPE, HOUSTON TX, 77056

CULTURE MAP

SCALE: 1"=500' EXHIBIT "H"
 DATE: 01/01/2011 SHEET 7 OF 11