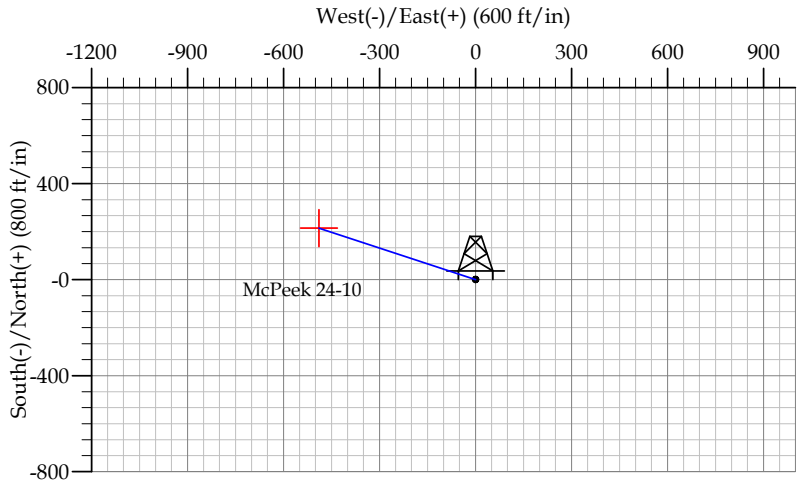


REFERENCE INFORMATION

Co-ordinate (N/E) Reference: Well McPeek 24-10, True North
 Vertical (TVD) Reference: WELL @ 5003.0ft (Original Well Elev)
 Section (VS) Reference: Slot - (0.0N, 0.0E)
 Measured Depth Reference: WELL @ 5003.0ft (Original Well Elev)
 Calculation Method:

WELL DETAILS: McPeek 24-10

		Ground Level: 4990.0									
+N/-S	+E/-W	Northing	Easting	Latitude	Longitude	Slot					
SECTION DETAILS											
Sec	MD	Inc	Azi	TVD	+N/-S	+E/-W	DLeg	TFace	VSec	Target	
1	0.0	0.00	0.00	0.0	0.0	0.0	0.00	0.00	0.0		
2	950.0	0.00	0.00	950.0	0.0	0.0	0.00	0.00	0.0		
3	1215.2	5.30	293.72	1214.8	4.9	-11.2	2.00	293.72	12.3		
4	6730.2	5.30	293.72	6706.2	210.0	-478.0	0.00	0.00	522.1		
5	6995.4	0.00	0.00	6971.0	214.9	-489.2	2.00	180.00	534.3		
6	7695.4	0.00	0.00	7671.0	214.9	-489.2	0.00	0.00	534.3	McPeek 24-10	

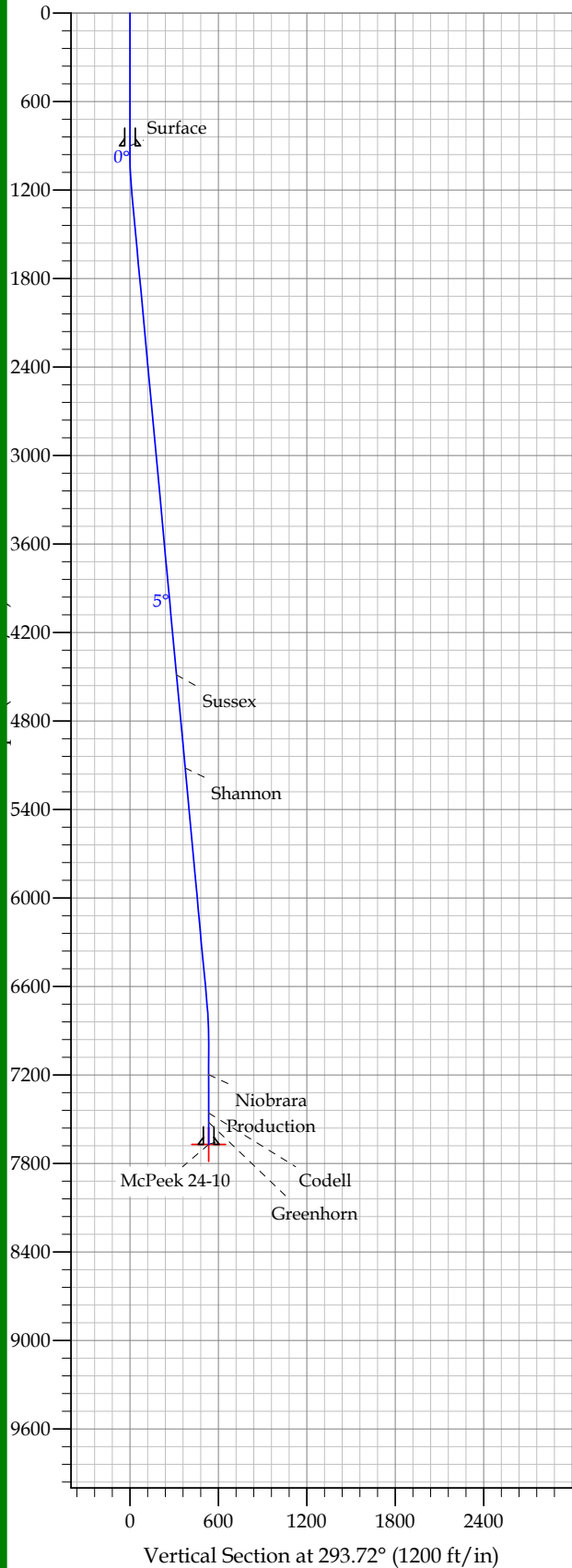


FORMATION TOP DETAILS

TVDPath	MDPath	Formation
4488.0	4502.5	Sussex
5118.0	5135.2	Shannon
7198.0	7222.4	Niobrara
7458.0	7482.4	Codell
7521.0	7545.4	Greenhorn

CASING DETAILS

TVD	MD	Name	Size
900.0	900.0	Surface	8.625
7671.0	7695.4	Production	4.500



EnCana Corporation
 Planning Report - Geographic

Database:	EDM	Local Co-ordinate Reference:	Well McPeek 24-10
Company:	DJ/Paradox/WTX	TVD Reference:	WELL @ 5003.0ft (Original Well Elev)
Project:	Wattenberg	MD Reference:	WELL @ 5003.0ft (Original Well Elev)
Site:	New Drills	North Reference:	True
Well:	McPeek 24-10	Survey Calculation Method:	Minimum Curvature
Wellbore:	Wellbore #1		
Design:	McPeek 24-10		

Project	Wattenberg,		
Map System:	US State Plane 1983	System Datum:	Mean Sea Level
Geo Datum:	North American Datum 1983		
Map Zone:	Colorado Northern Zone		

Site	New Drills				
Site Position:		Northing:	1,252,450.66 ft	Latitude:	40° 1' 32.016 N
From:	Lat/Long	Easting:	3,120,627.66 ft	Longitude:	105° 4' 9.336 W
Position Uncertainty:	ft	Slot Radius:	in	Grid Convergence:	0.28 °

Well	McPeek 24-10					
Well Position	+N/-S	43,952.3 ft	Northing:	1,297,111.16 ft	Latitude:	40° 8' 47.832 N
	+E/-W	85,512.8 ft	Easting:	3,205,772.54 ft	Longitude:	104° 45' 50.076 W
Position Uncertainty		ft	Wellhead Elevation:	ft	Ground Level:	4,990.0 ft

Wellbore	Wellbore #1				
Magnetics	Model Name	Sample Date	Declination (°)	Dip Angle (°)	Field Strength (nT)
	IGRF200510	12/31/2009	9.00	66.90	53,170

Design	McPeek 24-10			
Audit Notes:				
Version:	Phase:	PROTOTYPE	Tie On Depth:	0.0
Vertical Section:	Depth From (TVD) (ft)	+N/-S (ft)	+E/-W (ft)	Direction (°)
	0.0	0.0	0.0	293.72

Plan Sections										
Measured Depth (ft)	Inclination (°)	Azimuth (°)	Vertical Depth (ft)	+N/-S (ft)	+E/-W (ft)	Dogleg Rate (°/100ft)	Build Rate (°/100ft)	Turn Rate (°/100ft)	TFO (°)	Target
0.0	0.00	0.00	0.0	0.0	0.0	0.00	0.00	0.00	0.00	
950.0	0.00	0.00	950.0	0.0	0.0	0.00	0.00	0.00	0.00	
1,215.2	5.30	293.72	1,214.8	4.9	-11.2	2.00	2.00	0.00	293.72	
6,730.2	5.30	293.72	6,706.2	210.0	-478.0	0.00	0.00	0.00	0.00	
6,995.4	0.00	0.00	6,971.0	214.9	-489.2	2.00	-2.00	0.00	180.00	
7,695.4	0.00	0.00	7,671.0	214.9	-489.2	0.00	0.00	0.00	0.00	McPeek 24-10

EnCana Corporation
 Planning Report - Geographic

Database:	EDM	Local Co-ordinate Reference:	Well McPeek 24-10
Company:	DJ/Paradox/WTX	TVD Reference:	WELL @ 5003.0ft (Original Well Elev)
Project:	Wattenberg	MD Reference:	WELL @ 5003.0ft (Original Well Elev)
Site:	New Drills	North Reference:	True
Well:	McPeek 24-10	Survey Calculation Method:	Minimum Curvature
Wellbore:	Wellbore #1		
Design:	McPeek 24-10		

Planned Survey										
Measured Depth (ft)	Inclination (°)	Azimuth (°)	Vertical Depth (ft)	+N/-S (ft)	+E/-W (ft)	Map Northing (ft)	Map Easting (ft)	Latitude	Longitude	
0.0	0.00	0.00	0.0	0.0	0.0	1,297,111.16	3,205,772.54	40° 8' 47.832 N	104° 45' 50.076 W	
900.0	0.00	0.00	900.0	0.0	0.0	1,297,111.16	3,205,772.54	40° 8' 47.832 N	104° 45' 50.076 W	
Surface										
950.0	0.00	0.00	950.0	0.0	0.0	1,297,111.16	3,205,772.54	40° 8' 47.832 N	104° 45' 50.076 W	
1,215.2	5.30	293.72	1,214.8	4.9	-11.2	1,297,116.00	3,205,761.26	40° 8' 47.881 N	104° 45' 50.221 W	
4,502.5	5.30	293.72	4,488.0	127.2	-289.4	1,297,235.92	3,205,482.05	40° 8' 49.089 N	104° 45' 53.803 W	
Sussex										
5,135.2	5.30	293.72	5,118.0	150.7	-343.0	1,297,259.00	3,205,428.31	40° 8' 49.321 N	104° 45' 54.493 W	
Shannon										
6,730.2	5.30	293.72	6,706.2	210.0	-478.0	1,297,317.19	3,205,292.83	40° 8' 49.907 N	104° 45' 56.231 W	
6,995.4	0.00	0.00	6,971.0	214.9	-489.2	1,297,322.03	3,205,281.56	40° 8' 49.956 N	104° 45' 56.376 W	
7,222.4	0.00	0.00	7,198.0	214.9	-489.2	1,297,322.03	3,205,281.56	40° 8' 49.956 N	104° 45' 56.376 W	
Niobrara										
7,482.4	0.00	0.00	7,458.0	214.9	-489.2	1,297,322.03	3,205,281.56	40° 8' 49.956 N	104° 45' 56.376 W	
Codell										
7,545.4	0.00	0.00	7,521.0	214.9	-489.2	1,297,322.03	3,205,281.56	40° 8' 49.956 N	104° 45' 56.376 W	
Greenhorn										
7,695.4	0.00	0.00	7,671.0	214.9	-489.2	1,297,322.03	3,205,281.56	40° 8' 49.956 N	104° 45' 56.376 W	
Production - McPeek 24-10										

Design Targets										
Target Name - hit/miss target - Shape	Dip Angle (°)	Dip Dir. (°)	TVD (ft)	+N/-S (ft)	+E/-W (ft)	Northing (ft)	Easting (ft)	Latitude	Longitude	
McPeek 24-10 - plan hits target - Point	0.00	0.00	7,671.0	214.9	-489.2	1,297,322.03	3,205,281.56	40° 8' 49.956 N	104° 45' 56.376 W	

Casing Points						
Measured Depth (ft)	Vertical Depth (ft)	Name	Casing Diameter (in)	Hole Diameter (in)		
900.0	900.0	Surface	8.625	12.250		
7,695.4	7,671.0	Production	4.500	7.785		

Formations						
Measured Depth (ft)	Vertical Depth (ft)	Name	Lithology	Dip (°)	Dip Direction (°)	
4,502.5	4,488.0	Sussex		0.00		
5,135.2	5,118.0	Shannon		0.00		
7,222.4	7,198.0	Niobrara		0.00		
7,482.4	7,458.0	Codell		0.00		
7,545.4	7,521.0	Greenhorn		0.00		