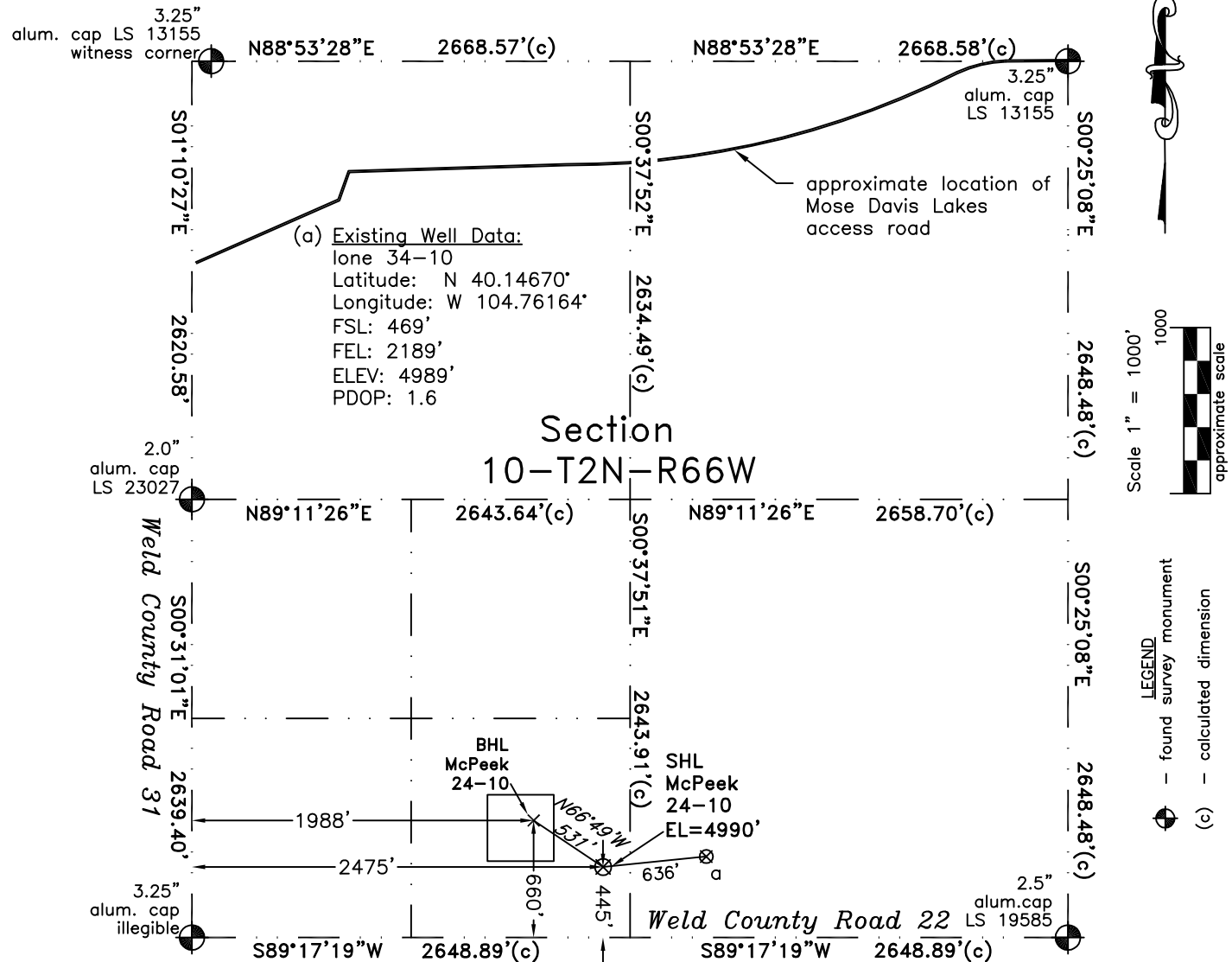


PLS Group, LLC
 109 Coronado Ct. - Bldg. 7
 Fort Collins, Colorado 80525

WELL LOCATION CERTIFICATE

THIS MAP DOES NOT
 REPRESENT A BOUNDARY SURVEY



In accordance with a request from Dan Nelson of EnCana Oil & Gas (USA) Inc., PLS Group, LLC has determined the location of the **McPeek 24-10** well site to be SHL: 445' FSL and 2475' FWL, (BHL 660' FSL and 1988' FWL) as measured at ninety (90) degrees from the section lines of Section 10, Township 2 North, Range 66 West, 6th Principal Meridian, County of Weld, CO.

Proposed Surface Hole Data:

Latitude: N 40.14662° BHL(40.14721°)
 Longitude: W 104.76391° BHL(104.76566°)
 PDOP: 1.2

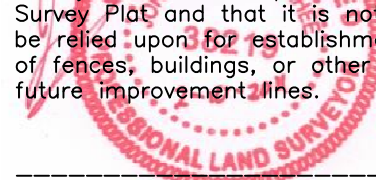
Nearest: Building 2796' southwest Above Ground Utility 2152' southeast
 Public Road 439' south Railroad 12,741' southwest
 Property Line 173' east Well Window: SHL is 291' outside
 Existing Well: lone 34-10 636' northeast

Notes:

- 1) Bearings and distances based on NAD 83 Colorado North State Plane Coordinates using RTK GPS observations taken 2/7/11 by operator Craig Burke.
- 2) Conversion factor to ground (1.000275398).
- 3) Elevations based on NAVD 88 GPS heights and Geoid 2003 corrections.
- 4) See improvement map for visible improvements within 400 feet.
- 5) The surface use is agrucultural field.

NOTICE: According to Colorado law you must commence any legal action based upon any defect in this W.L.C. within three years after you first discover such defect. In no event may any action based upon any defect in this W.L.C. be commenced more than ten years from this said date of the certification shown hereon.

I hereby certify that this Well Location Certificate was prepared by me or under my direct supervision on 2/10/11 for and on behalf of EnCana Oil & Gas (USA) Inc. That it is not a Land Survey Plat or an Improvement Survey Plat and that it is not to be relied upon for establishment of fences, buildings, or other future improvement lines.



John Robert McGenee LS#38219
 Well: McPeek 24-10 WLC