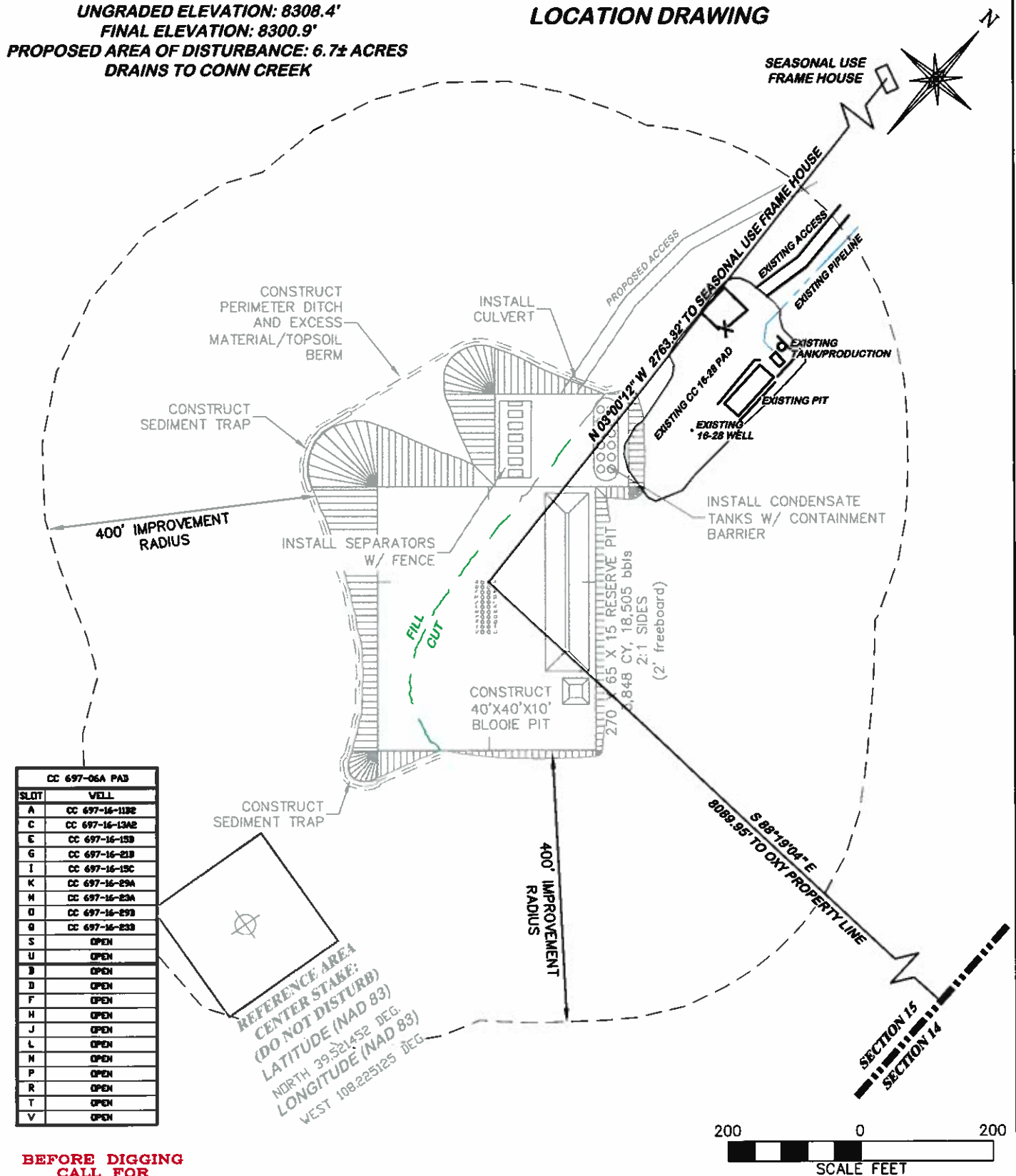


UNGRADED ELEVATION: 8308.4'  
 FINAL ELEVATION: 8300.9'  
 PROPOSED AREA OF DISTURBANCE: 6.7± ACRES  
 DRAINS TO CONN CREEK

## LOCATION DRAWING



CC 697-06A PAD	
SLOT	WELL
A	CC 697-16-11B2
C	CC 697-16-13A2
E	CC 697-16-15B
G	CC 697-16-21B
I	CC 697-16-15C
K	CC 697-16-29A
H	CC 697-16-23A
D	CC 697-16-29B
B	CC 697-16-23B
S	OPEN
U	OPEN
B	OPEN
D	OPEN
F	OPEN
H	OPEN
J	OPEN
L	OPEN
N	OPEN
P	OPEN
R	OPEN
T	OPEN
V	OPEN

BEFORE DIGGING  
 CALL FOR  
 UTILITY LINE LOCATION

CC 697-16-28 ANNEX



**RIFFIN & ASSOCIATES, INC.**  
 1414 ELK ST., ROCK SPRINGS, WY 82901

(307) 362-5028

DRAWN: 2/17/11 - DEH

SCALE: 1" = 200'

REVISED: N/A

DRG JOB No. 11771

EXHIBIT 2D

## LOCATION DRAWING

**OXY USA WTP LP**  
**CASCADE CREEK 697-16-11B2, 13A2, 15B, 15C,**  
**21B, 23A, 23B, 29A, & 29B SENW SECTION 16,**  
**T. 6 S., R. 97 W., 6th P.M.,**  
**GARFIELD COUNTY, COLORADO**