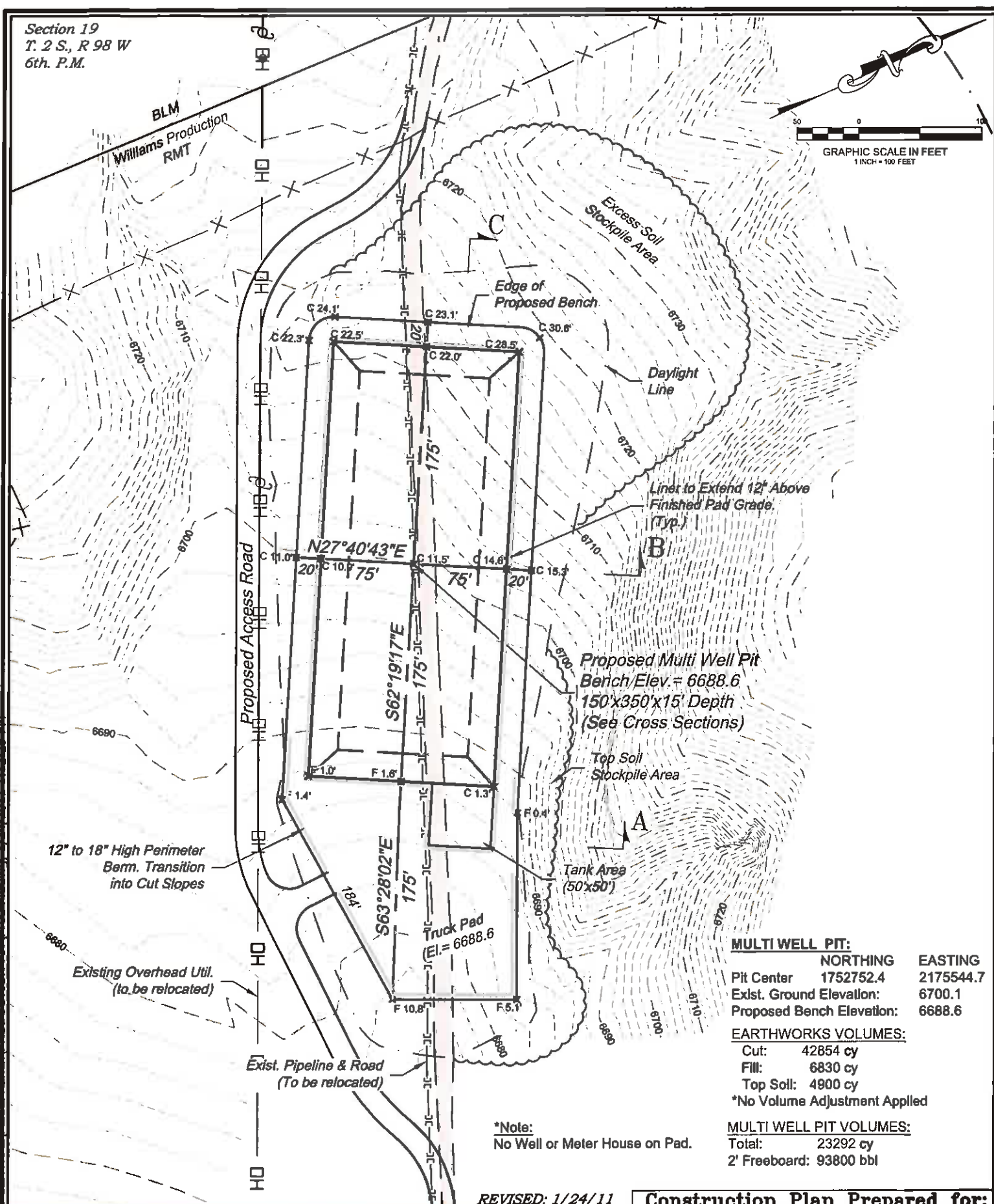
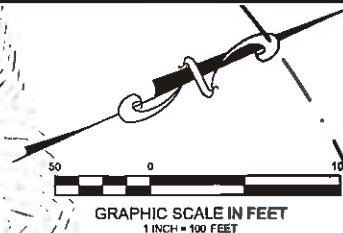


Section 19
T. 2 S., R 98 W
6th. P.M.



MULTI WELL PIT:

	NORTHING	EASTING
Pit Center	1752752.4	2175544.7
Exst. Ground Elevation:		6700.1
Proposed Bench Elevation:		6688.6

EARTHWORKS VOLUMES:

Cut:	42854 cy
Fill:	6830 cy
Top Soil:	4900 cy
*No Volume Adjustment Applied	

MULTI WELL PIT VOLUMES:

Total:	23292 cy
2' Freeboard:	93800 bbl

*Note:
No Well or Meter House on Pad.

REVISED: 1/24/11

Construction Plan Prepared for:

Williams Williams Production, RMT

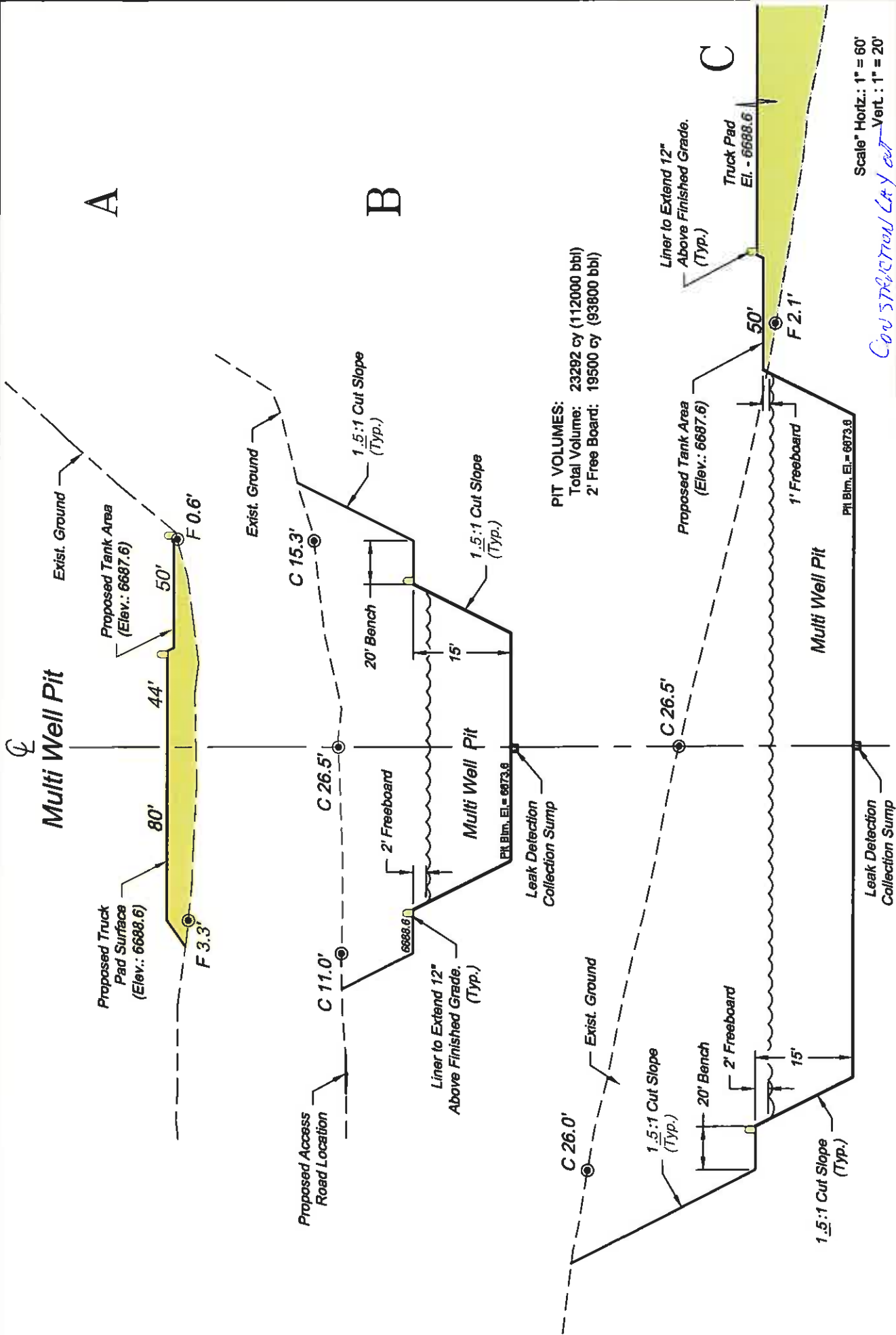
Mautz Ranch - Multi Well Pit
CONSTRUCTION LAYOUT

SCALE: 1" = 100'
DATE: 11/18/10
PLAT: 1 of 4
PROJECT: Williams Highlands
DFT: CWS

130 East Third Street
Nixa, Missouri 64550
Ph: (937) 625-1330
Fax: (937) 625-2773

BOOKCLIFF
Survey Services, Inc.

K:\2010\HIGHLANDS CENTRAL\Mautz Ranch\MULTI WELL PIT.Dwg 1/24/2011 1:42:35 PM



PIT VOLUMES:
Total Volume: 23292 cy (112000 bbl)
2' Free Board: 19500 cy (93800 bbl)

Scale: Horiz.: 1" = 60'
Vert.: 1" = 20'

Construction Plan Prepared for:
Williams
Williams Production, RMT
Mautz Ranch - Multi Well Pit
CROSS SECTIONS

REVISED: 1/21/11
SCALE: As Noted
DATE: 11/18/10
SHEET: 2 of 4
PROJECT: Williams
DFT: cws

