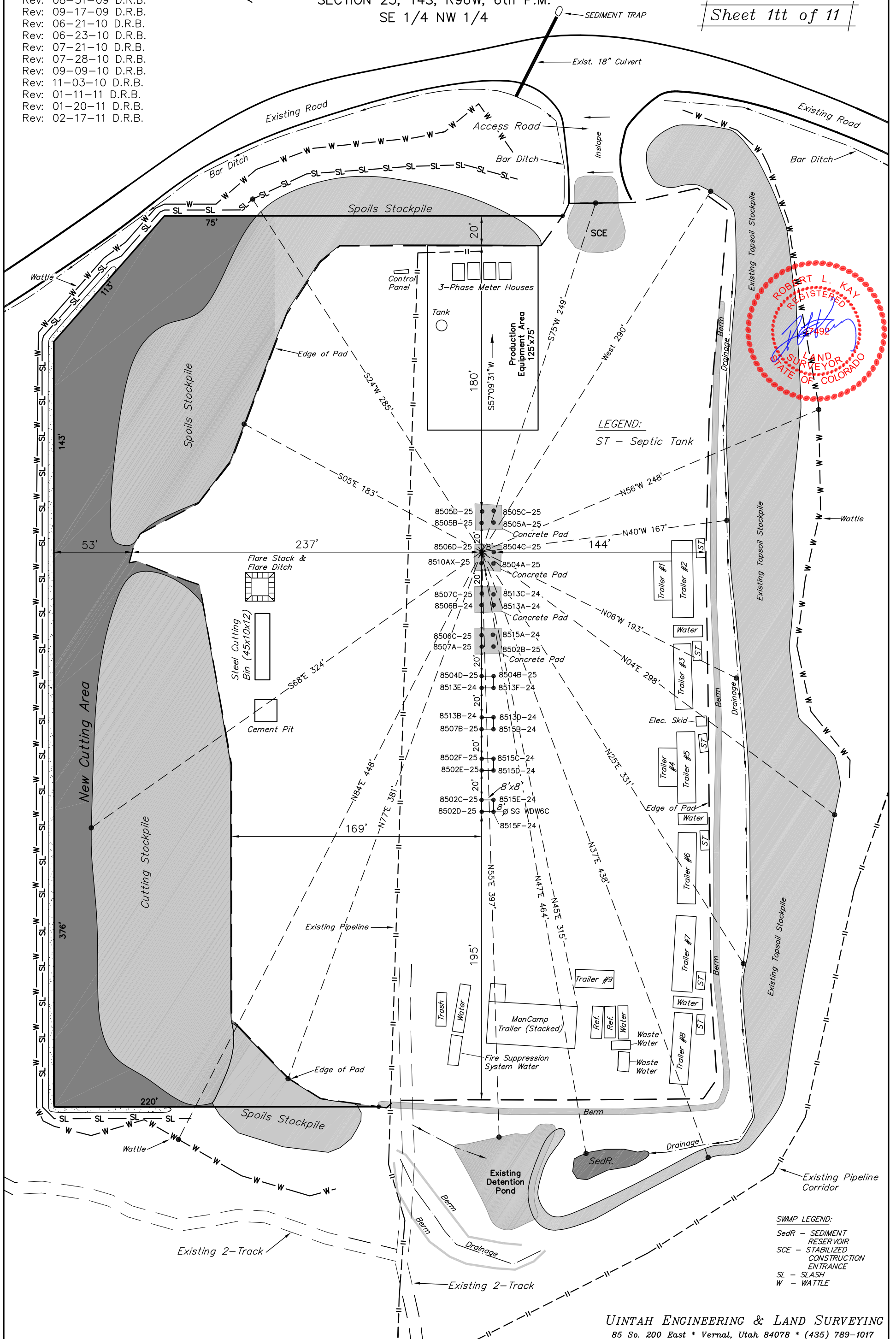
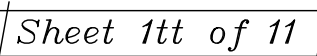


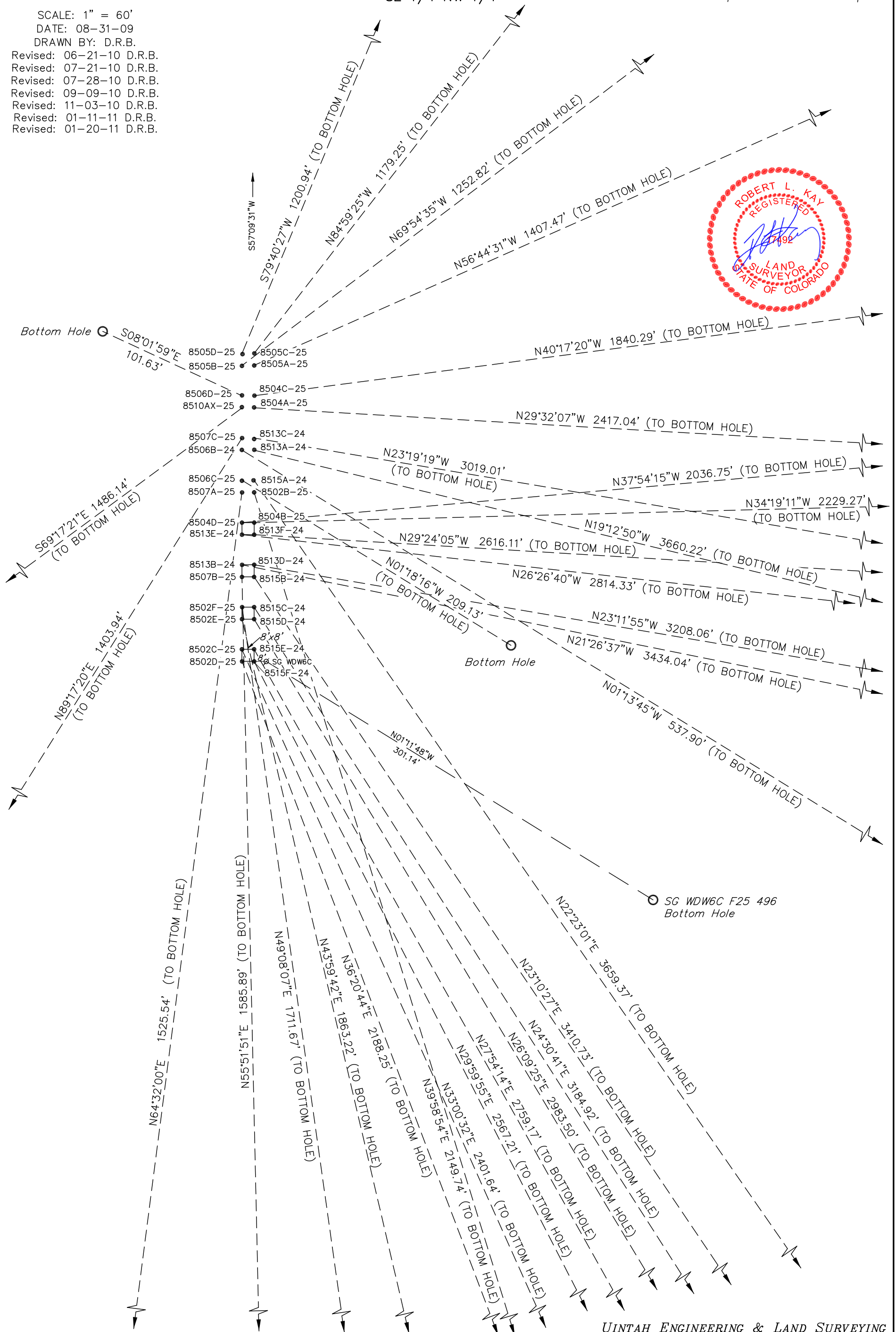
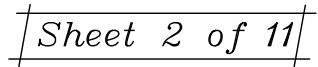
Rev: 08-17-09 D.R.B.
Rev: 08-31-09 D.R.B.
Rev: 09-17-09 D.R.B.
Rev: 06-21-10 D.R.B.
Rev: 06-23-10 D.R.B.
Rev: 07-21-10 D.R.B.
Rev: 07-28-10 D.R.B.
Rev: 09-09-10 D.R.B.
Rev: 11-03-10 D.R.B.
Rev: 01-11-11 D.R.B.
Rev: 01-20-11 D.R.B.
Rev: 02-17-11 D.R.B.

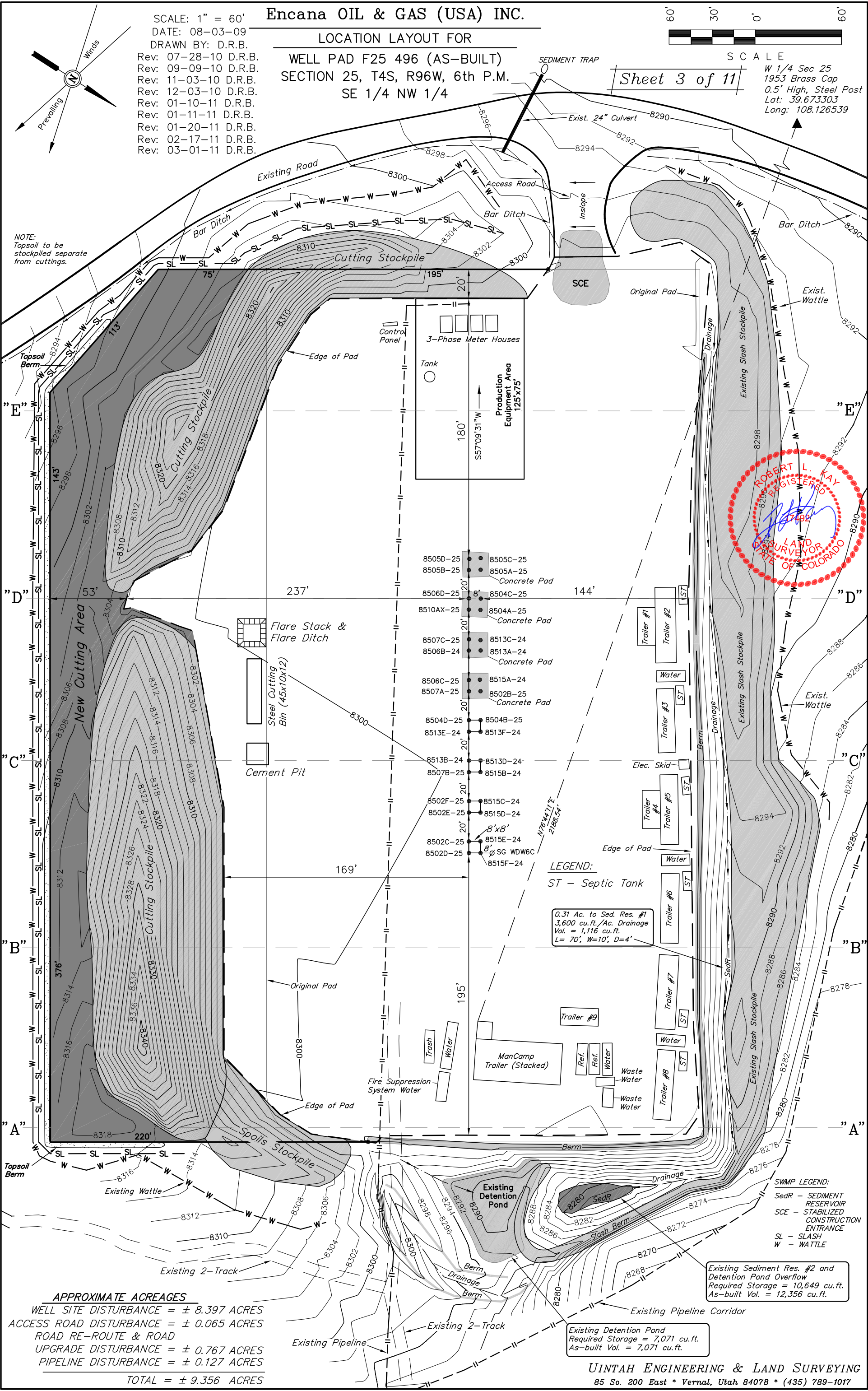
WELL PAD F25 496 (AS-BUILT)
SECTION 25, T4S, R96W, 6th P.M.
SE 1/4 NW 1/4



UINTAH ENGINEERING & LAND SURVEYING
85 So. 200 East * Vernal, Utah 84078 * (435) 789-1017

WELL PAD INTERFERENCE PLAT
WELL PAD F25 496 (AS-BUILT)
SECTION 25, T4S, R96W, 6th P.M.
SE 1/4 NW 1/4

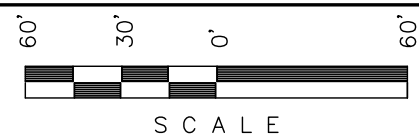




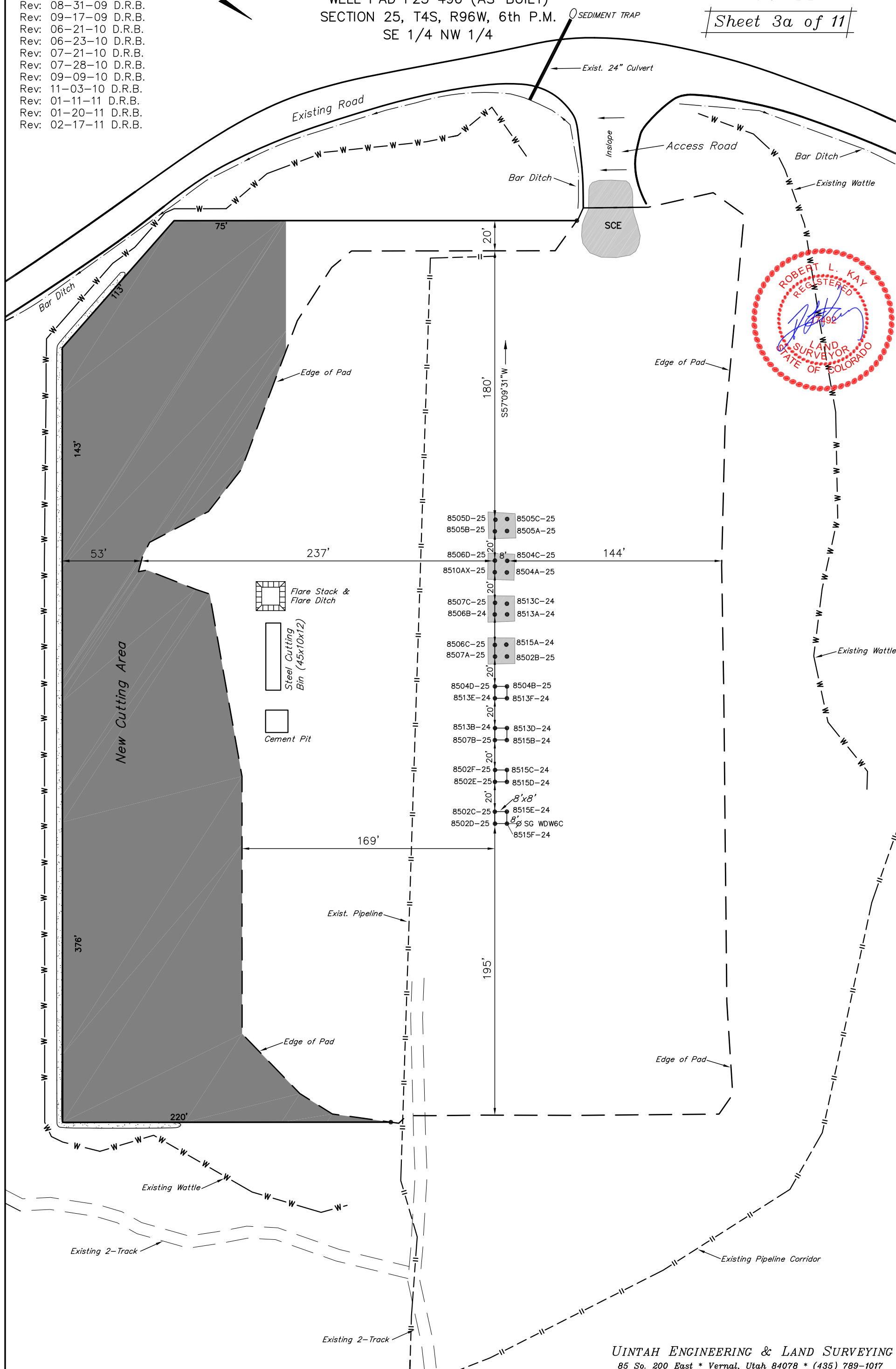
DRAWN BY: D.R.B.

Rev: 08-17-09 D.R.B.
Rev: 08-31-09 D.R.B.
Rev: 09-17-09 D.R.B.
Rev: 06-21-10 D.R.B.
Rev: 06-23-10 D.R.B.
Rev: 07-21-10 D.R.B.
Rev: 07-28-10 D.R.B.
Rev: 09-09-10 D.R.B.
Rev: 11-03-10 D.R.B.
Rev: 01-11-11 D.R.B.
Rev: 01-20-11 D.R.B.
Rev: 02-17-11 D.R.B.

SE 1/4 NW 1/4



Sheet 3a of 11



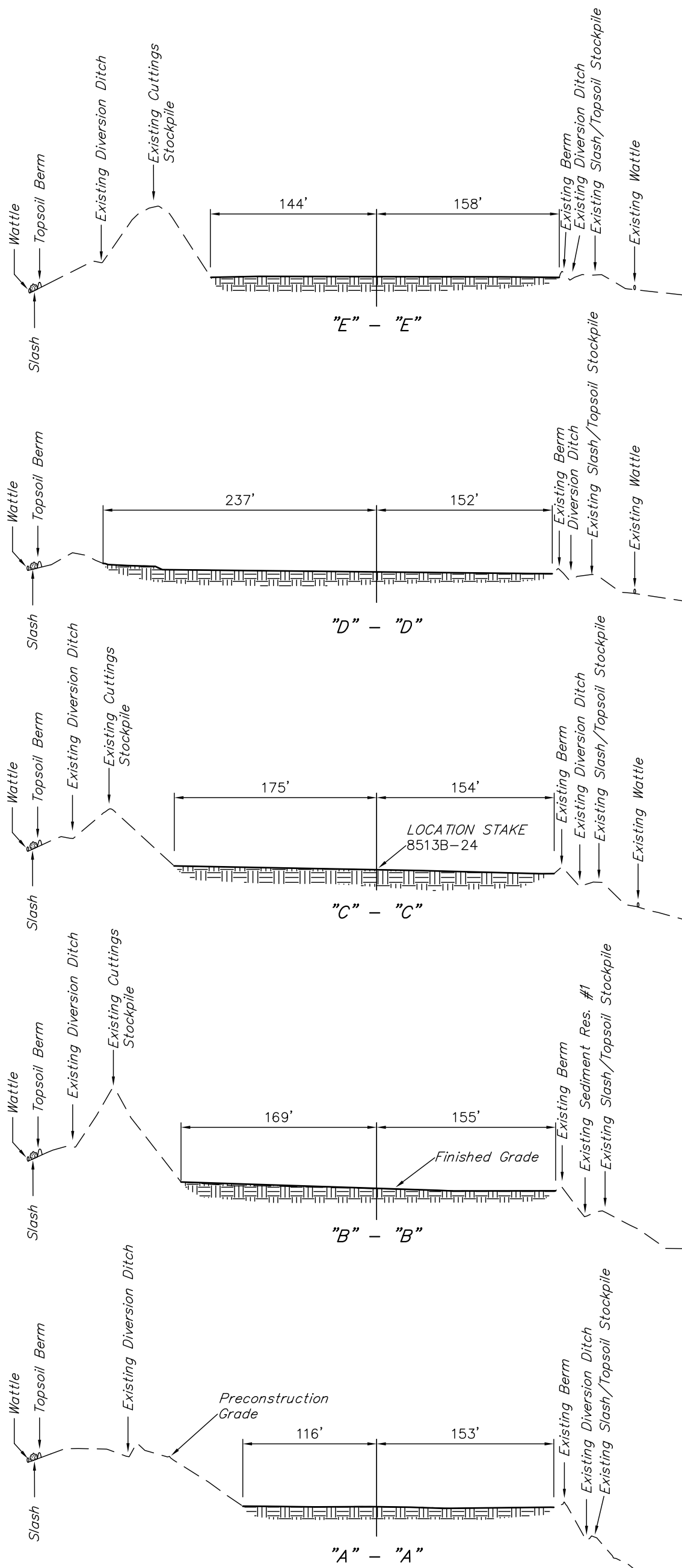
UINTAH ENGINEERING & LAND SURVEYING
85 So. 200 East * Vernal, Utah 84078 * (435) 789-1017

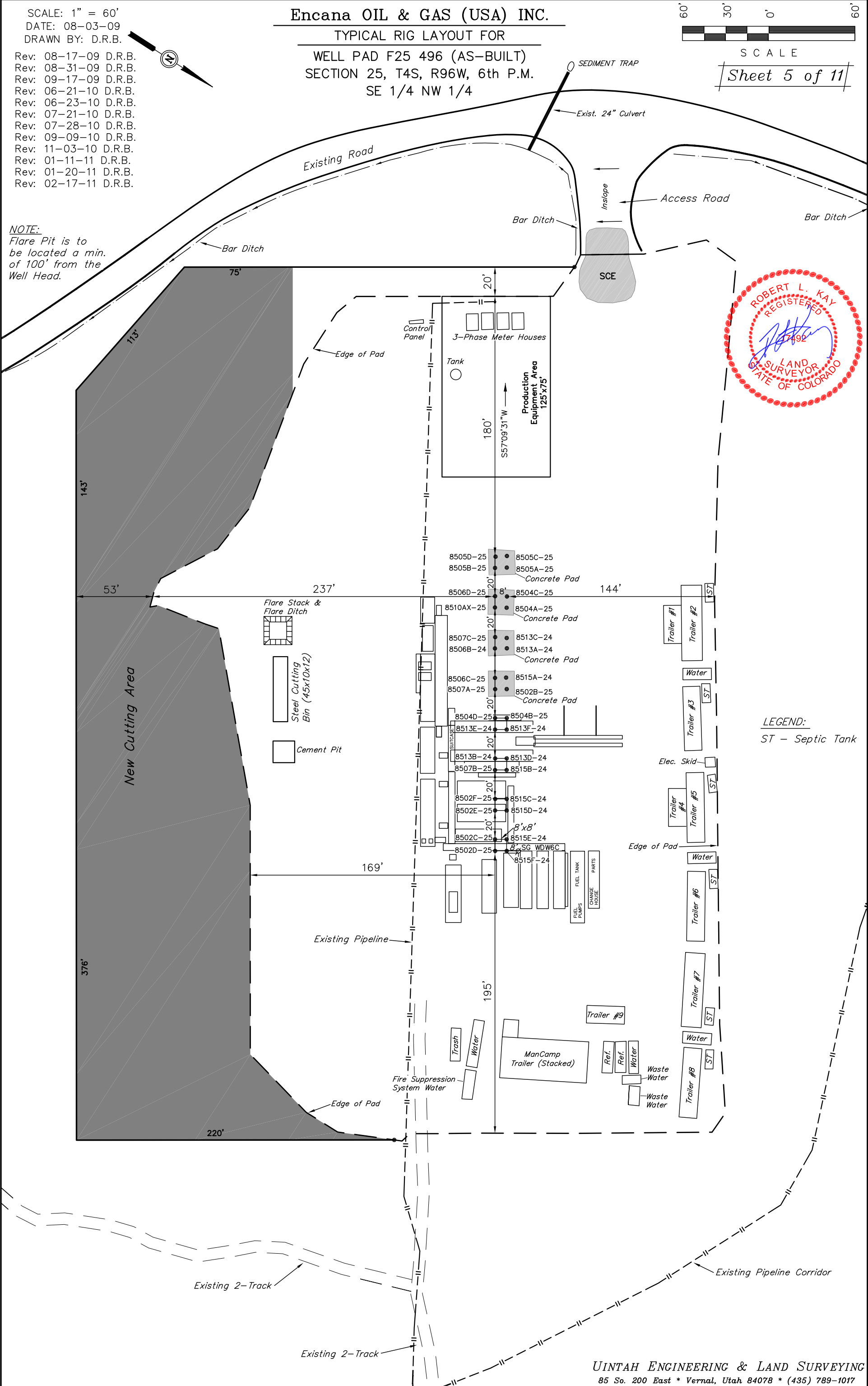
Encana OIL & GAS (USA) INC.
CONSTRUCTION LAYOUT CROSS SECTION FOR
WELL PAD F25 496 (AS-BUILT)
SECTION 25, T4S, R96W, 6th P.M.
SE 1/4 NW 1/4

Sheet 4 of 11

1" = 40'
X-Section
Scale
1" = 100'

DATE: 08-03-09
DRAWN BY: D.R.B.
Rev: 08-31-09 D.R.B.
Rev: 06-21-10 D.R.B.
Rev: 07-21-10 D.R.B.
Rev: 11-03-10 D.R.B.
Rev: 02-17-11 D.R.B.



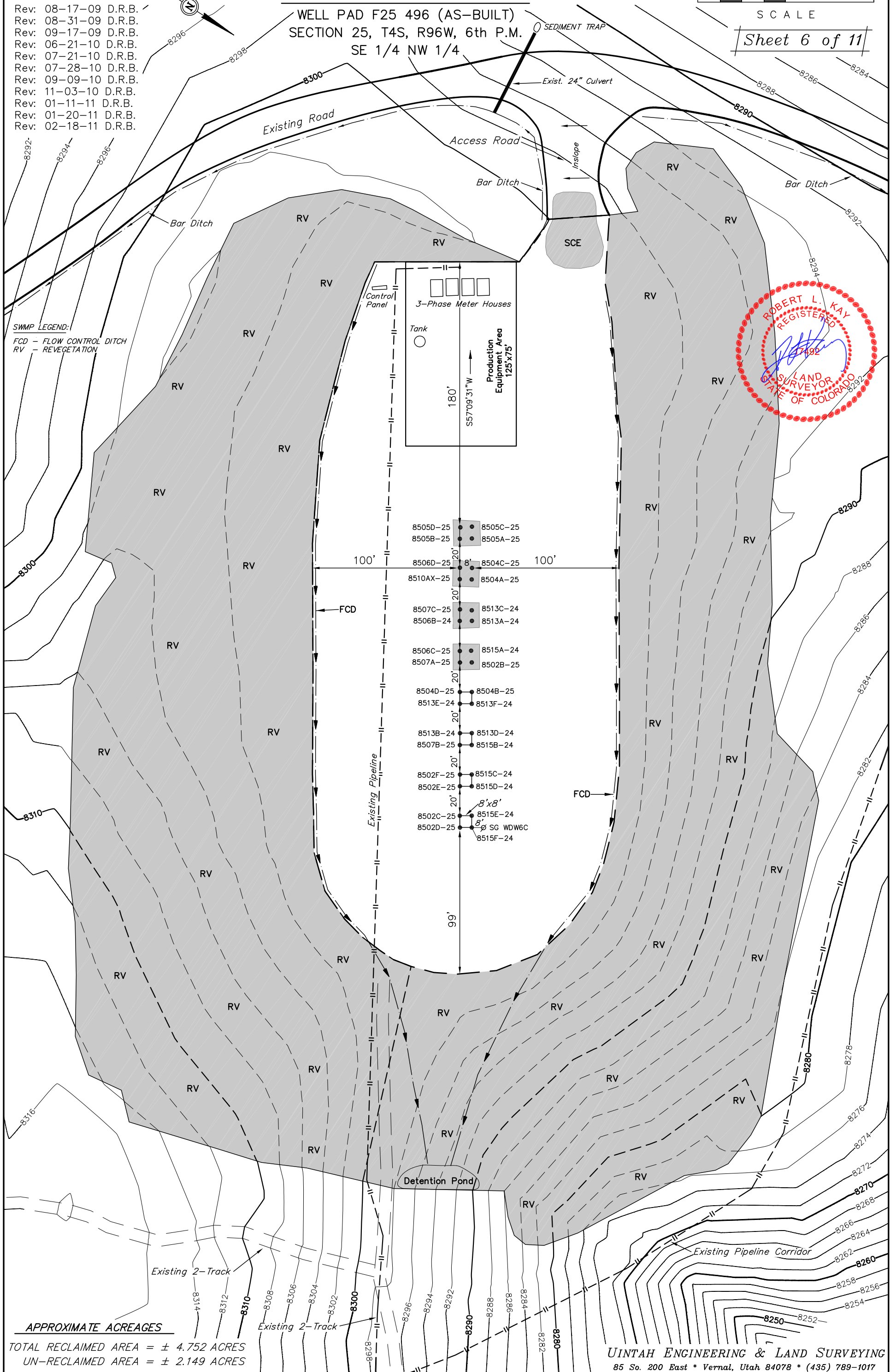


Rev: 08-17-09 D.R.B. ✓
Rev: 08-31-09 D.R.B.
Rev: 09-17-09 D.R.B.
Rev: 06-21-10 D.R.B.
Rev: 07-21-10 D.R.B.
Rev: 07-28-10 D.R.B. /
Rev: 09-09-10 D.R.B.
Rev: 11-03-10 D.R.B.
Rev: 01-11-11 D.R.B.
Rev: 01-20-11 D.R.B.
Rev: 02-18-11 D.R.B.

WELL PAD F25 496 (AS-BUILT)
SECTION 25, T4S, R96W, 6th P.M.
SE 1/4 NW 1/4



Sheet 6 of 11



APPROXIMATE ACREAGES

TOTAL RECLAIMED AREA = ± 4.752 ACRES
UN-RECLAIMED AREA = ± 2.149 ACRES

UINTAH ENGINEERING & LAND SURVEYING
85 So. 200 East * Vernal, Utah 84078 * (435) 789-1017

Encana OIL & GAS (USA) INC.

SURFACE DISTURBANCE AREA FOR
WELL PAD F25 496 (AS-BUILT)
SECTION 25, T4S, R96W, 6th P.M.
SE 1/4 NW 1/4

SCALE: 1" = 60'

DATE: 08-03-09

DRAWN BY: D.R.B.

Rev: 06-23-10 D.R.B.

Rev: 07-21-10 D.R.B.

Rev: 07-22-10 D.R.B.

Rev: 07-28-10 D.R.B.

Rev: 09-09-10 D.R.B.

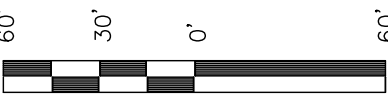
Rev: 11-03-10 D.R.B.

Rev: 01-10-11 D.R.B.

Rev: 01-11-11 D.R.B.

Rev: 01-20-11 D.R.B.

Rev: 02-17-11 D.R.B.



SCALE

Sheet 7 of 11

APPROXIMATE ACREAGES

WELL SITE DISTURBANCE = ± 8.397 ACRES

ACCESS ROAD DISTURBANCE = ± 0.065 ACRES

ROAD RE-ROUTE/UPGRADE DISTURBANCE = ± 0.767 ACRES

PIPELINE DISTURBANCE = ± 0.127 ACRES

TOTAL = ± 9.356 ACRES



LINE TABLE		
LINE	BEARING	LENGTH
L1	S48°10'49"E	54.42'
L2	S17°30'55"E	49.68'
L3	S02°50'23"E	75.46'
L4	S50°12'57"E	36.86'
L5	S15°03'27"E	42.56'
L6	S57°06'56"W	48.30'
L7	S56°54'20"W	61.27'
L8	S57°41'52"W	54.21'
L9	N36°08'26"W	39.84'
L10	N70°49'16"W	33.89'
L11	N54°47'25"W	42.62'
L12	N72°02'37"W	30.99'
L13	N75°30'42"W	31.90'

LINE TABLE		
LINE	BEARING	LENGTH
L14	N15°28'41"W	38.81'
L15	N07°56'44"E	24.67'
L16	N34°50'09"E	56.39'
L17	N47°01'46"E	45.68'
L18	N18°01'07"E	43.11'
L19	S86°04'18"E	43.71'
L20	S08°01'50"E	14.08'
L21	S03°10'33"W	17.72'