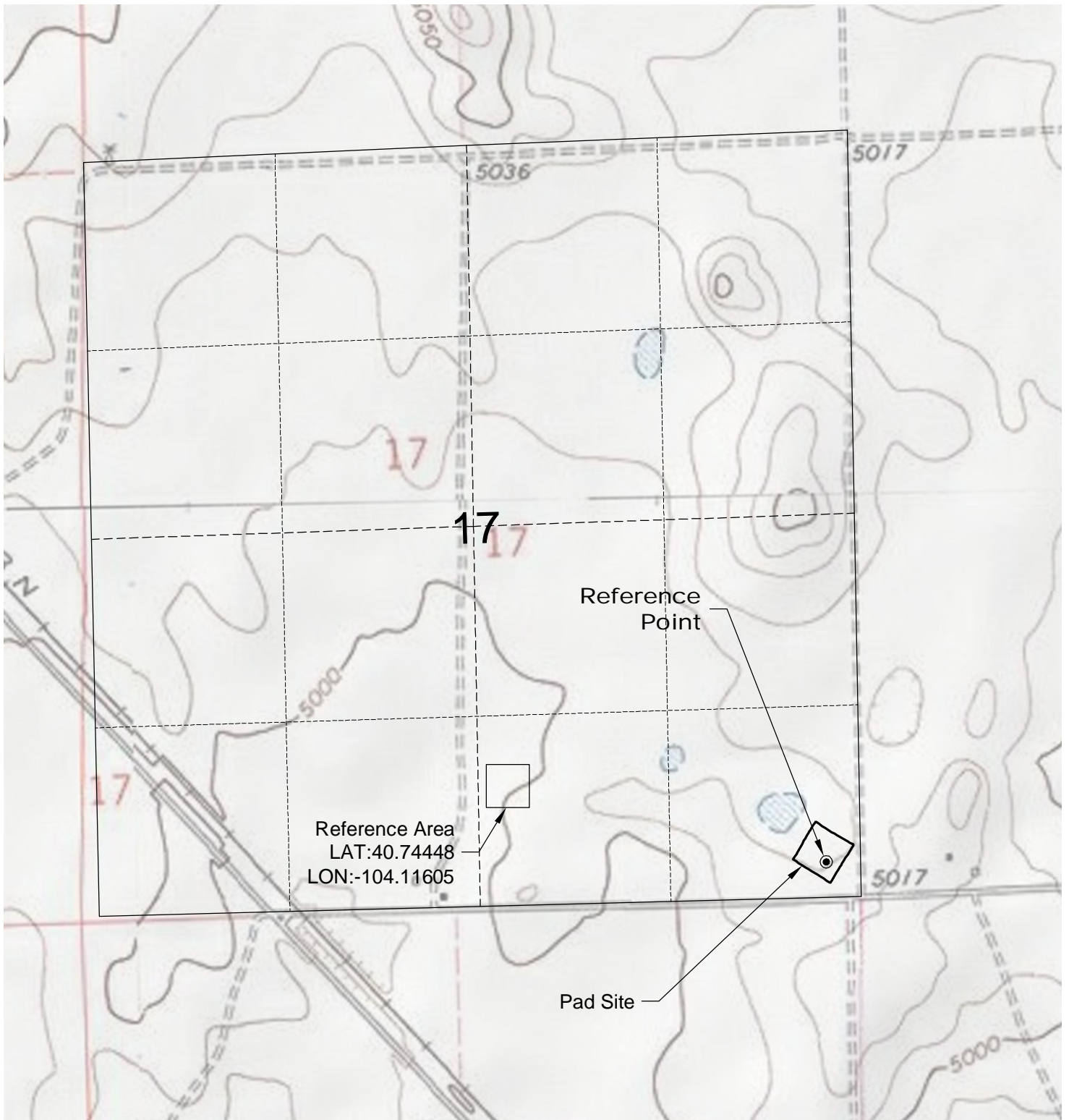
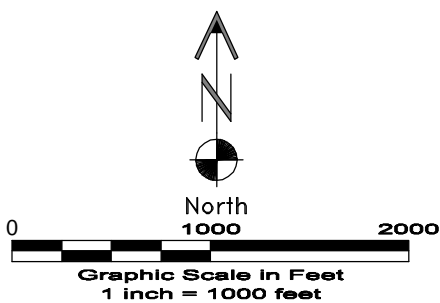


REFERENCE AREA MAP



DWG: G:\GEO SURV\Weld\North\Corriza 110004\Wellplate\Nelson\Nelson 17-44-9-60 F2A.dwg USER: MTC DATE: Feb 17, 2011 3:42pm



 **GEO SURV** 
LAND SURVEYING AND MAPPING
LAFAYETTE - WINTER PARK
Ph 303 666 0379 Fx 303 665 6320

CARRIZO OIL & GAS, INC
NELSON 17-44-9-60 PAD

SE1/4 SE1/4 SEC. 17 T9N R60W
6th PM WELD COUNTY COLORADO

2/17/11