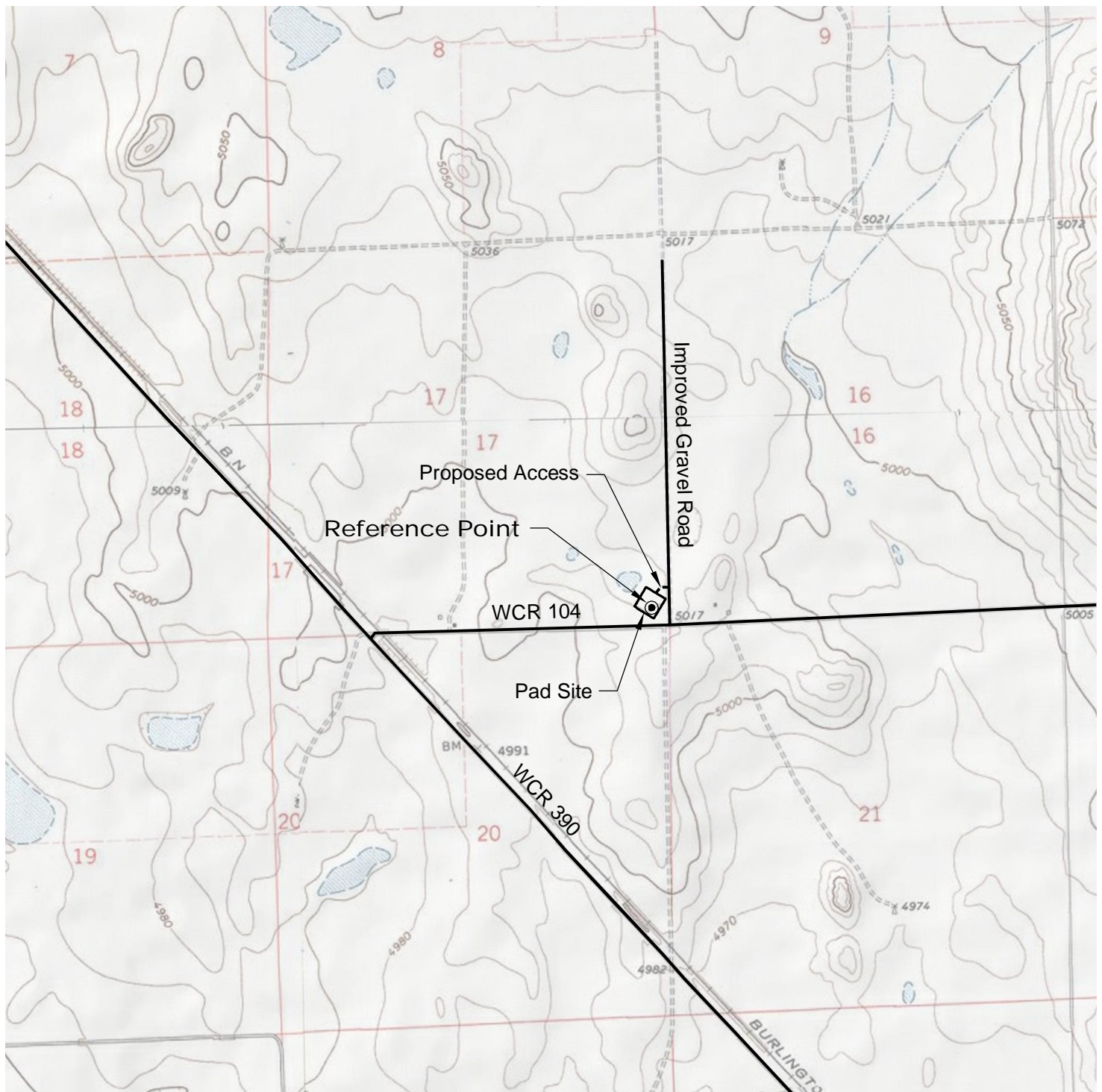


ACCESS ROAD MAP



DRIVING DIRECTIONS:

From Town of Keota, beginning at intersection
of WCR 390 & WCR 103; North on WCR 390
MP 3.5 Right on WCR 104
MP 4.3 Left on improved gravel road
MP 4.4 Left on access onto Nelson 17-44-9-60 Pad

2/17/11



North



Graphic Scale in Feet
1 inch = 2000 feet



LAND SURVEYING AND MAPPING
LAFAYETTE - WINTER PARK
Ph 303 666 0379 Fx 303 665 6320

CARRIZO OIL & GAS, INC
NELSON 17-44-9-60 PAD

SE1/4 SE1/4 SEC. 17 T9N R60W
6th PM WELD COUNTY COLORADO